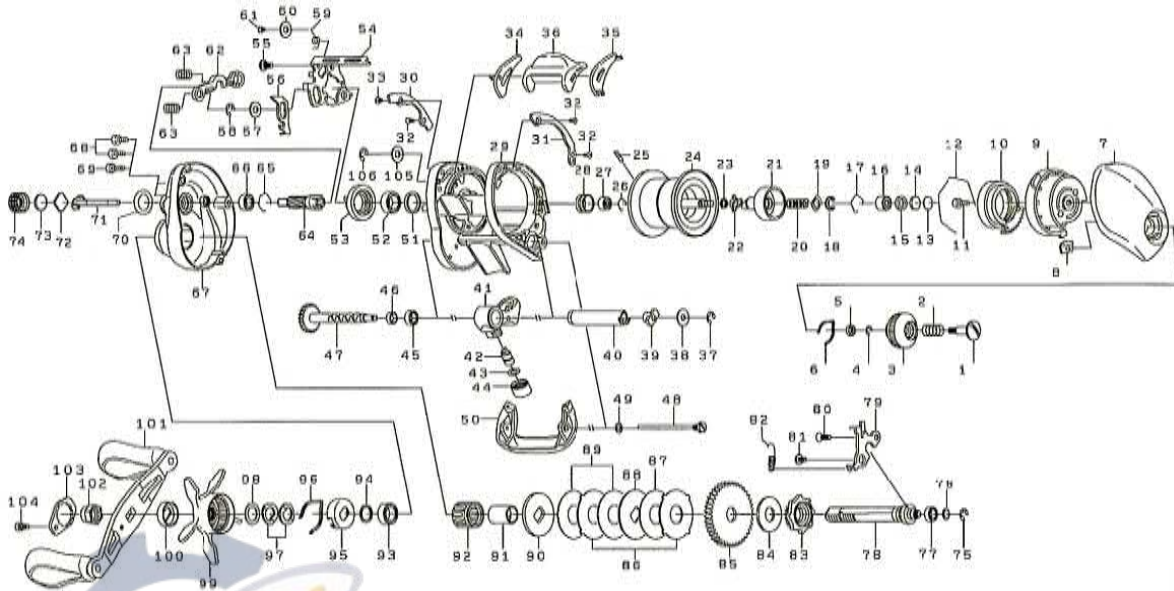




BAITCASTING REEL

SV103HL / SV103XSL

Please order by parts number, not key number
 Veuillez indiquer le numéro de la pièce (Non "Key" No.)



| Key No. | Part No. | Part Name |
|---------|----------|---------------------|
| 1 | F57-7901 | SET PLT SCREW |
| 2 | E16-7101 | SPRING |
| 3 | F57-7802 | BRAKE ADJ KNOB |
| 4 | B33-9801 | RETAINER |
| 5 | F63-7701 | BRAKE DIAL WASHER |
| 6 | H86-3101 | BRAKE CLICK SPRING |
| 7 | G26-1619 | R/S PLATE |
| 8 | F61-3401 | BRAKE DIAL RETAINER |
| 9 | G26-1801 | RIGHT SET PLT |
| 10 | F71-7702 | MAGNET HOLDER |
| 11 | 351-0906 | RIGHT SET PLT |
| 12 | B54-3201 | MAGNET HOLDER RET |
| 13 | 375-7400 | SPACER |
| 14 | 375-7411 | SPACER |
| 15 | F57-4303 | SPACER |
| 16 | G43-1105 | BALL BEARING |
| 17 | E21-9701 | RETAINER |
| 18-28 | Z02-2655 | SPOOL ASSEMBLY |
| 29 | H81-0502 | FRAME ASSEMBLY |
| 30 | G79-4123 | PLATE (A) |
| 31 | G79-5723 | PLATE (B) |
| 32 | G31-8503 | SCREW |
| 33 | G61-1501 | SCREW |
| 34 | G26-0802 | CLUTCH LEVER PLT A |
| 35 | G26-0702 | CLUTCH LEVER PLT B |
| 36 | G26-0901 | CLUTCH LEVER |
| 37 | 320-5901 | RETAINER |
| 38 | F65-5501 | WORM SHAFT WASHER |
| 39 | B71-5601 | WORM SHAFT HOLDER |
| 40 | F83-6502 | WORM SHIELD |
| 41 | G41-0301 | LINE GUIDE |
| 42 | 121-4212 | LINE GUIDE PAWL |
| 43 | 373-1300 | LINE GUIDE WASHER |
| 44 | F40-2801 | PAWL CAP |
| 45 | F64-8301 | BUSHING |
| 46 | G01-0701 | WORM SHAFT COLLAR |
| 47 | G79-0701 | WORM SHAFT |
| 48 | G01-1702 | STABILIZER BAR |
| 49 | G68-4801 | WASHER |
| 50 | G26-1505 | FRONT PLT |
| 51 | F83-4701 | COLLAR |
| 52 | G43-1002 | BALL BEARING |
| 53 | F99-7401 | CLUTCH CAM |
| 54 | G80-1701 | CLUTCH CAM PLT |
| 55 | G00-9701 | CLUTCH CAM SCREW |
| 56 | G80-1801 | CLUTCH TRIP PLT |
| 57 | 371-6906 | WAHSER |
| 58 | 320-1402 | RETAINER |
| 59 | G80-2001 | CLUTCH CAM SPRING |
| 60 | F44-0201 | WASHER |
| 61 | F50-5701 | SCREW |
| 62 | F99-8201 | YOKE |
| 63 | G85-0301 | YOKE SPRING |
| 64 | G80-2101 | PINION GEAR |

| Key No. | Part No. | Part Name |
|---------|----------|--------------------------|
| 65 | E21-9701 | RETAINER |
| 66 | G46-6205 | BALL BEARING |
| 67 | J31-5901 | L/S PLATE |
| 68 | G04-0805 | PLT SCREW |
| 69 | G04-0801 | SCREW |
| 70 | 171-5201 | O-RING |
| 71 | F74-4101 | PINION SHAFT |
| 72 | B17-5401 | WASHER |
| 73 | B17-5503 | RUBBER WASHER |
| 74 | H97-7301 | CAST CONTROL CAP |
| 75 | 320-5901 | RETAINER |
| 76 | G75-5201 | WASHER |
| 77 | G46-6205 | BALL BEARING |
| 78 | G79-0210 | DRIVE SHAFT |
| 79 | G80-1901 | DRIVE SHAFT RET |
| 80 | E13-4503 | SCREW |
| 81 | G85-0401 | DRIVE SHAFT RET SCREW |
| 82 | G79-0501 | CLUTCH TRIP PLT SPRING |
| 83 | G80-2201 | CLUTCH WHEEL |
| 84 | G86-3501 | DRIVE SHAFT WASHER |
| 85 | G80-2301 | DRIVE GEAR |
| 86 | G79-1301 | EARED WASHER |
| 87 | G79-1402 | DRAG WASHER |
| 88 | F90-4902 | KEY WASHER (A) |
| 89 | H03-3002 | DRAG WASHER |
| 90 | G35-8501 | KEY WASHER (B) |
| 91 | G01-1401 | GEAR SHAFT COLLAR |
| 92 | G81-9801 | ROLLER CLUTCH |
| 93 | G43-1001 | BALL BEARING |
| 94 | B55-3801 | WAHSER |
| 95 | F02-8201 | CLICK LEAF SPRING HOLDER |
| 96 | F03-2401 | CLICK LEAF SPRING |
| 97 | 150-8901 | SPRING WASHER |
| 98 | G69-4201 | WASHER |
| 99 | H23-8613 | STAR DRAG |
| 100 | F85-0401 | HANDLE COLLAR |
| 101 | J31-3801 | HANDLE ASSEMBLY |
| 102 | G79-3310 | HANDLE NUT |
| 103 | H83-4508 | HANDLE NUT PLT |
| 104 | 353-8301 | HANDLE SCREW |
| 105 | G85-0701 | WASHER |
| 106 | 320-5901 | RETAINER |

| SV103XSL SPECIAL PARTS | | |
|------------------------|----------|----------------|
| Key No. | Part No. | Part Name |
| | G79-4112 | PLATE (A) |
| | G79-5712 | PLATE (B) |
| | H33-7201 | WORM SHAFT |
| | H81-0601 | PINION GEAR |
| | J39-5902 | L/S PLATE |
| | H14-6001 | CLUTCH WHEEL |
| | H81-0701 | DRIVE GEAR |
| | H83-4506 | HANDLE NUT PLT |