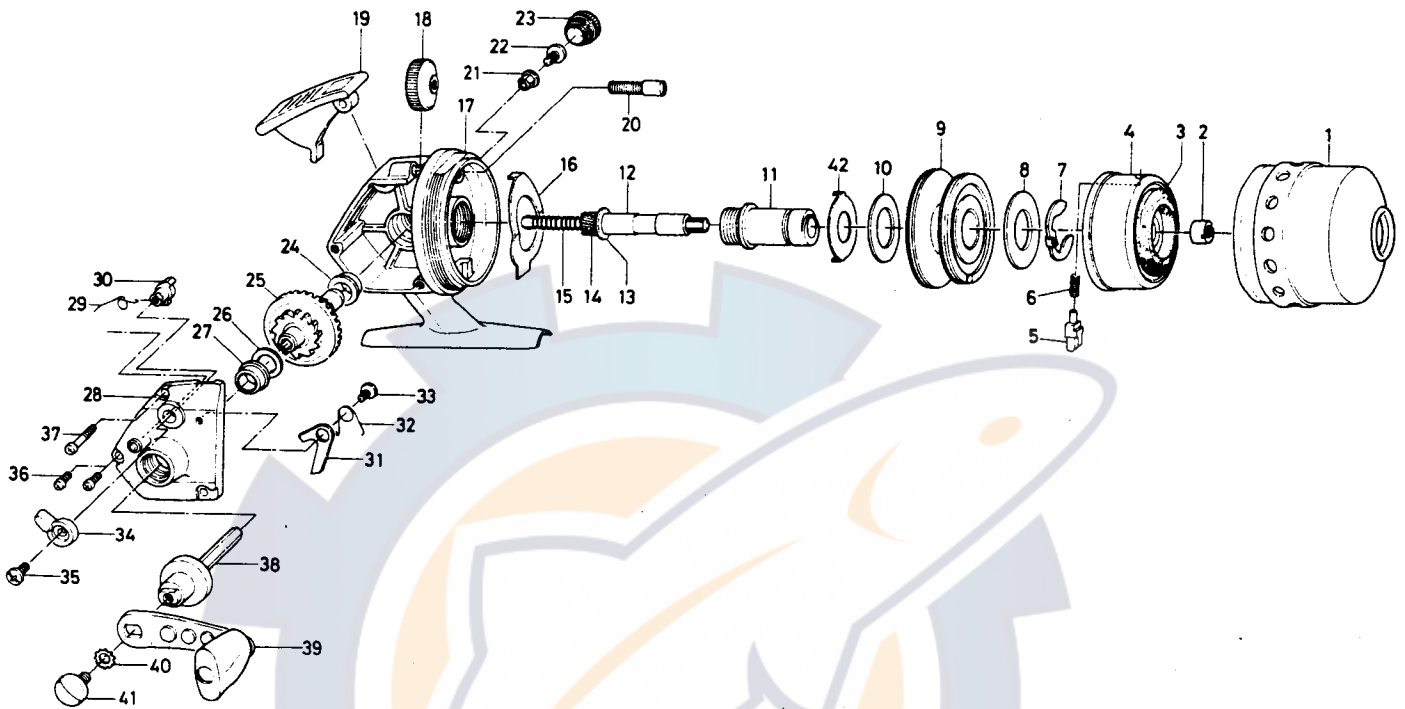


SPINCASTING REEL

Silvercast 212RL



KEY NO. 3 ~ 6
6-736-6701

ROTOR ASSEMBLY

KEY NO. 12 ~ 15
6-711-2021

MAIN SHAFT ASSEMBLY

| Key No. | Parts No. | Parts Name | Key No. | Parts No. | Parts Name |
|---------|------------|----------------------|---------|------------|--------------------------|
| 1 | 6-B09-2201 | Front cover | 22 | 6-363-8511 | Handle screw A |
| 2 | 6-342-4911 | Rotor nut | 23 | 6-363-6001 | Handle screw cap |
| 3 | 6-330-4311 | Line stopper | 24 | 6-637-4801 | Drive gear shaft holder |
| 4 | 6-736-6602 | Rotor | 25 | 6-413-5501 | Drive gear |
| 5 | 6-180-2622 | Pick up pin | 26 | 6-370-5100 | Drive gear washer |
| 6 | 6-142-4501 | Pick up pin spring | 27 | 6-637-4801 | Drive gear shaft holder |
| 7 | 6-320-9101 | Spool retainer | 28 | 6-063-0207 | Body cover |
| 8 | 6-370-0412 | Spool washer | 29 | 6-B09-1401 | Anti-reverse cam spring |
| 9 | 6-B22-4201 | Spool | 30 | 6-461-4501 | Anti-reverse cam |
| 10 | 6-370-0412 | Spool washer A | 31 | 6-111-7011 | Anti-reverse claw |
| 11 | 6-381-7831 | Shaft metal | 32 | 6-144-5111 | Anti-reverse claw spring |
| 12 | 6-393-4311 | Main shaft | 33 | 6-351-7701 | Anti-reverse claw screw |
| 13 | 6-370-0226 | Pinion washer | 34 | 6-541-3132 | Anti-reverse lever |
| 14 | 6-402-6701 | Pinion gear | 35 | 6-351-4701 | Anti-reverse lever screw |
| 16 | 6-142-7711 | Main shaft spring | 36 | 6-351-1101 | Body cover screw (short) |
| 16 | 6-151-1731 | Drag adjusting plate | 37 | 6-353-4911 | Body cover screw (long) |
| 17 | 6-700-9113 | Body | 38 | 6-071-0504 | Drive gear shaft |
| 18 | 6-B07-9301 | Drag adjusting dial | 39 | 6-746-5801 | Handle |
| 19 | 6-781-6502 | Push button | 40 | 6-160-8000 | Handle washer |
| 20 | 6-363-5911 | Drag adjusting screw | 41 | 6-363-5301 | Handle screw B |
| 21 | 6-501-8501 | Handle screw holder | 42 | 6-376-0401 | Spool washer B |