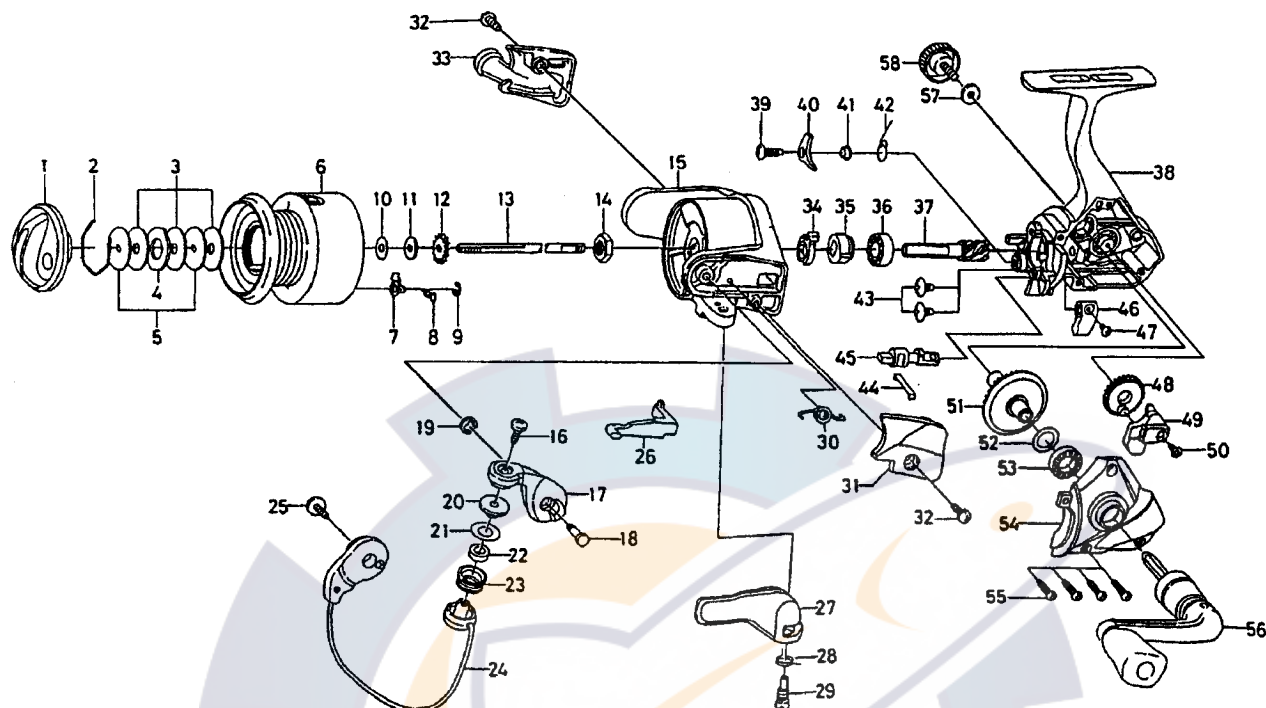




SPINNING REEL

# SPINSTAR-Z1505C / 2005C



Key No.	Parts No.	Parts Name
2-9	G14-3801	SPOOL
2-9	G17-0801	SPOOL (EXTRA)
1	G02-4701	DRAG KNOB
2	F37-3301	DRAG WASHER RET
3	E13-6001	DRAG WASHER
4	373-3603	EARED WASHER
5	E46-7201	KEY WASHER
7	B07-5302	CLICK PAWL
8	E40-3101	CLICK SPRING
9	320-5901	CLICK RET
10	E39-8000	SPOOL WASHER A
11	E46-7101	SPOOL WASHER B
12	F81-1501	CLICK GEAR
13	F68-6701	MAIN SHAFT
14	F33-6102	ROTOR NUT
15	F32-1411	ROTOR
16	B67-9308	LINE ROLLER SCREW
17	F47-3801	BAIL ARM
18	E49-3501	BAIL ARM SCREW
19	320-5901	BAIL ARM SCREW RET
20	F44-6302	ROLLER COLLAR
21	F44-6202	LINE ROLLER WASHER
22	F05-5601	BALL BEARING A
23	F45-4902	LINE ROLLER
24	G13-7301	BAIL
25	B84-2102	BAIL HOLDER SCREW
26	E49-6401	BAIL TRIP LEVER
27	E49-3407	TRIGGER LEVER
28	E36-9901	TRIGGER SPRING
29	E37-0002	TRIGGER SCREW
30	E49-6801	BAIL SPRING
31	F32-4110	BAIL SPRING COVER
32	E24-8101	BAIL HOLDER COVER SCREW
33	F32-6510	BAIL HOLDER COVER
34	F12-2101	A/R COLLAR

Key No.	Parts No.	Parts Name
35	E49-8501	A/R RATCHET
36	634-1301	BALL BEARING B
37	F68-6501	PINION GEAR
38	G13-7101	BODY
39	F12-5701	A/R PAWL SCREW
40	F12-1901	A/R PAWL
41	F12-3501	A/R PAWL COLLAR
42	F12-3401	A/R PAWL SPRING
43	E03-7801	BEARING RET SCREW
44	G04-7801	A/R CAM SPRING
45	G02-3801	A/R CAM
46	G01-5802	A/R LEVER
47	G01-6001	A/R LEVER SCREW
48	F69-1702	OSC GEAR
49	F68-6602	OSC SLIDER
50	351-0311	OSC SLIDER SCREW
51	F12-1501	DRIVE GEAR
52	375-8500	DRIVE GEAR WASHER
53	634-1301	BALL BEARING C
54	G13-7201	SIDE COVER
55	E13-0501	SIDE COVER SCREW
56	G11-9301	HANDLE
57	F02-0202	HANDLE WASHER
58	F67-6502	HANDLE SCREW

### Z2005C Special Parts

Key No.	Parts No.	Parts Name
2-9	G14-4001	SPOOL
2-9	G17-0901	SPOOL (EXTRA)
15	F39-9909	ROTOR
24	G13-7901	BAIL
26	E49-6501	BAIL TRIP LEVER
38	G13-7701	BODY
54	G13-7801	SIDE COVER