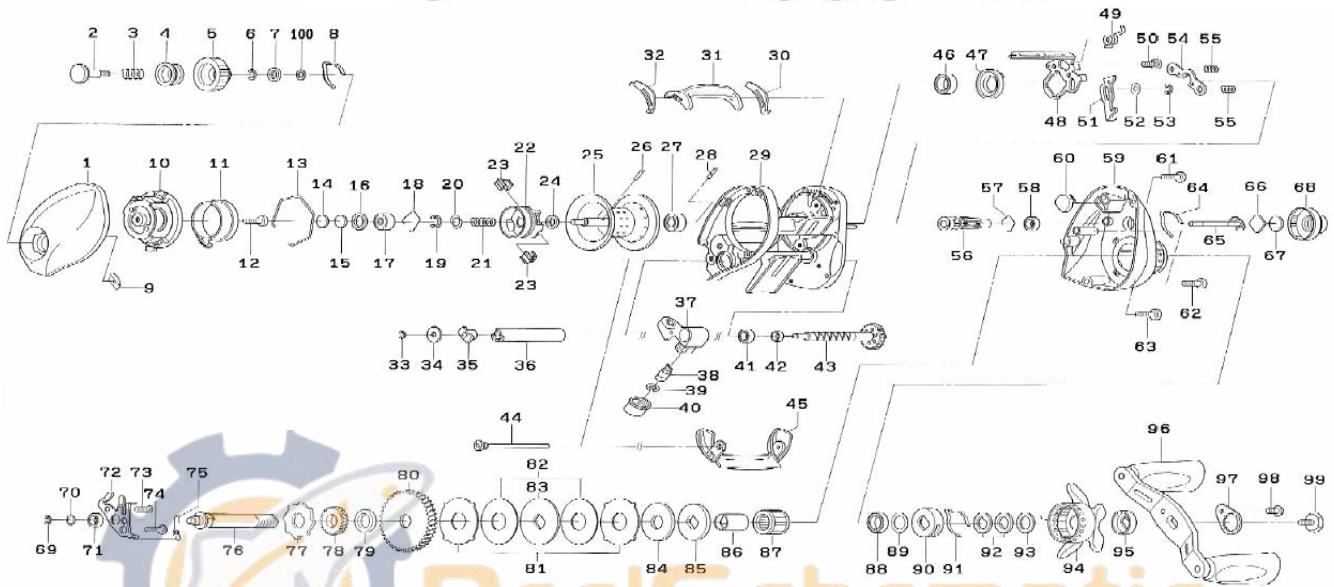


Please order by parts number, not key number
Veuillez indiquer le numéro de la pièce.


Daiwa
COMMITTED TO TOTAL QUALITY
BAITCASTING REEL

STEEZ 103SHA



Key No.	Parts No.	Parts Name	Key No.	Parts No.	Parts Name
1	G75-7301	Left side plate	56	H14-7301	Pinion gear
2	F57-7901	Set plate screw	57	E21-9701	Bearing retainer (B)
3	E16-7101	Set plate spring	58	G46-6202	Ball bearing (D)
4	F77-0705	Brake dial washer (A)	59	H15-3601	Right side plate
5	G75-7401	Brake adjusting knob	60	G26-2301	Clutch cam plate (B)
6	B33-9801	Brake dial retainer (A)	61	G04-0814	Right side plate screw (A)
7	F63-7701	Brake dial washer (B)	62	G04-0815	Right side plate screw (B)
8	F05-1701	Brake click spring	63	G04-0801	Right side plate screw (C)
9	F61-3401	Brake dial retainer (B)	64	F26-2701	Click leaf spring (A)
10	G75-7002	Left set plate	65	G01-5501	Pinion shaft
11	G75-7702	Magnet holder	66	B17-5401	Spacer (F)
12	351-0906	Left set plate screw	67	B17-5503	Spacer(G)
13	G75-7801	Magnet holder retainer	68	G77-4702	Cast control cap
14	375-7404	Spacer (A)	69	320-5901	Retainer (B)
15	375-7411	Spacer (B)	70	G75-5203	Washer (B)
16	G18-5101	Spacer (C)	71	G46-6202	Ball bearing (E)
17	G51-1503	Ball bearing (A)	72	H14-7201	Drive shaft retainer
18	F03-2201	Bearing retainer (A)	73	E13-4503	Drive shaft retainer screw (A)
19-28	Z01-8818	Spool assembly	74	G87-5801	Drive shaft retainer screw (B)
29	H14-6801	Frame assembly	75	H25-6701	Clutch trip plate spring
30	G75-4301	Spacer (D)	76	G75-5001	Drive shaft
31	G75-4602	Clutch lever	77	G75-6001	Clutch wheel
32	G75-4401	Spacer (E)	78	G75-6101	Drive gear (A)
33	320-5901	Warm shaft retainer	79	G87-8301	Drive shaft washer
34	F65-5501	Worm shaft washer	80	H14-7401	Drive gear (B)
35	B71-5601	Warm shaft holder (A)	81	G79-1302	Eared washer
36	F83-6502	Level wind guard	82	G79-1402	Drag washer (A)
37	G75-5701	Line guide	83	F90-4903	Key washer (A)
38	121-4212	Line guide pawl	84	H03-3001	Drag washer (B)
39	373-1300	Line guide washer	85	B36-0306	Key washer (B)
40	F40-2801	Pawl cap	86	G01-1401	Gear shaft collar
41	G46-6202	Ball bearing (B)	87	G81-9801	Roller clutch
42	G01-0701	Worm shaft holder (B)	88	G75-6301	Ball bearing (F)
43	G85-0901	Worm shaft assembly	89	B55-3801	Bearing washer
44	G35-8703	Stabilizer bar	90	F02-8201	Click leaf spring holder
45	G75-6802	Front plate	91	F03-2401	Click leaf spring (B)
46	G43-1004	Ball bearing (C)	92	150-8901	Drag spring washer
47	G35-7101	Clutch cam	93	373-7810	Spacing sleeve
48	G75-4802	Clutch cam plate (A)	94	G77-5101	Star drag
49	G75-5301	Clutch cam spring	95	F85-0401	Handle collar
50	G00-9701	Clutch cam screw	96	H16-9401	Handle assembly
51	H14-7101	Clutch trip plate	97	G77-9202	Handle nut plate
52	G53-9401	Washer (A)	98	G83-5501	Handle nut plate screw
53	320-5901	Retainer (A)	99	G77-9101	Handle screw
54	G35-7901	Yoke	100	375-4104	Brake dial washer (C)
55	G35-8001	Yoke spring			