



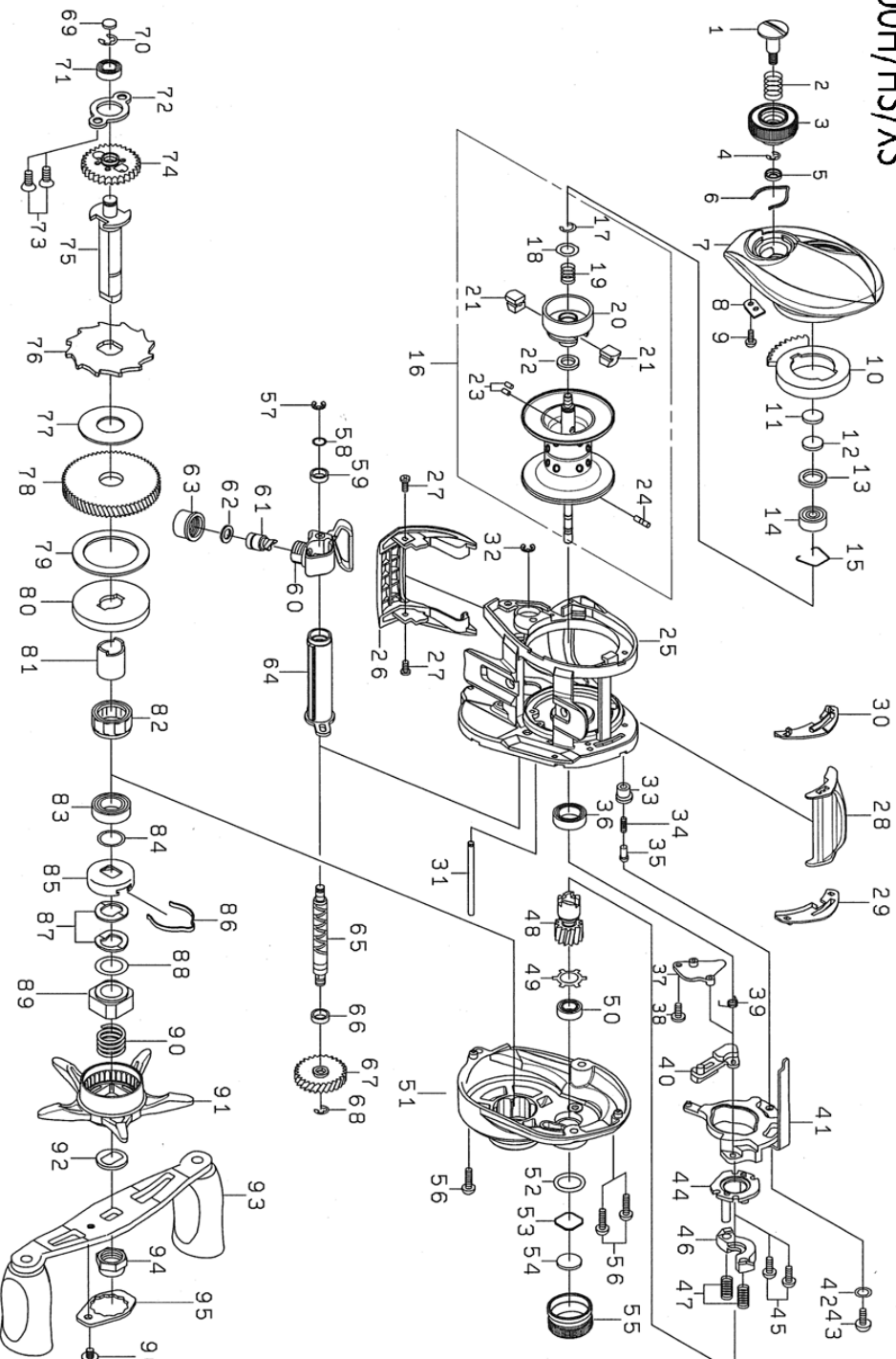
18 TATULA 100HS

Feel Alive.

Please quote by part number, not key number when ordering.
spares@daiwaaustralia.com.au PH: (02) 8644 8644

18 TATULA 100H/HS/XS

B34301A
B34302A
B34303A



REEL NAME	MGFT CODE	KEY NO	PARTS CODE	DESCRIPTION
18 TATULA 100HS		1	6J716301	BRAKE DIAL SCREW
18 TATULA 100HS		2	6E167101	BRAKE DIAL SPRING
18 TATULA 100HS		3	6J694901	BRAKE DIAL
18 TATULA 100HS		4	6B339801	BRAKE DIAL RETAINER(A)
18 TATULA 100HS		5	6F637701	BRAKE DIAL COLLAR
18 TATULA 100HS		6	6H663401	BRAKE DIAL LEAF SPRING
18 TATULA 100HS		7	6J694701	LS PLATE
18 TATULA 100HS		8	6H915501	BRAKE DIAL RETAINER(B)
18 TATULA 100HS		9	6G939301	BRAKE DIAL RETAINER(B)SCREW
18 TATULA 100HS		10	6J695001	MAGNET HOLDER
18 TATULA 100HS		11	63757404	LS BEARING WASHER(A)(0.1MM)
18 TATULA 100HS		12	63757411	LS BEARING WASHER(B)
18 TATULA 100HS		13	6G185101	LS BEARING WASHER(C)
18 TATULA 100HS		14	6G511503	LS BALL BEARING
18 TATULA 100HS		15	6F032201	LS BEARING RETAINER
18 TATULA 100HS		16-24	6Z024117	SPOOL UNIT (16- 24)
18 TATULA 100HS		25	6J692601	FRAME
18 TATULA 100HS		26	6J694601	FRONT COVER
18 TATULA 100HS		27	6H531508	FRONT COVER SCREW
18 TATULA 100HS		28	6J693301	CLUTCH LEVER
18 TATULA 100HS		29	6J692701	CLUTCH LEVER PLATE (R)
18 TATULA 100HS		30	6J692801	CLUTCH LEVER PLATE (L)
18 TATULA 100HS		31	6J281902	OSCILLATING POST
18 TATULA 100HS		32	6H704101	OSCILLATING POST RETAINER
18 TATULA 100HS		33	6J693401	CLUTCH CAM PLATE PIN SPRING COLLAR
18 TATULA 100HS		34	6H928801	CLUTCH CAM PLATE PIN SPRING
18 TATULA 100HS		35	6J055201	CLUTCH CAM PLATE PIN
18 TATULA 100HS		36	6B861704	CLUTCH CAM BALL BEARING
18 TATULA 100HS		37	6J693201	KICK LEVER PLATE (A)
18 TATULA 100HS		38	6H531508	KICK LEVER PLATE (A) SCREW
18 TATULA 100HS		39	6J407701	KICK LEVER SPRING
18 TATULA 100HS		40	6J622901	KICK LEVER
18 TATULA 100HS		41	6J692901	CLUTCH CAM
18 TATULA 100HS		42	6H159201	CLUTCH CAM SCREW WASHER
18 TATULA 100HS		43	63522501	CLUTCH CAM SCREW
18 TATULA 100HS		44	6H659101	KICK LEVER PLATE (B)
18 TATULA 100HS		45	6B032904	KICK LEVER PLATE (B) SCREW
18 TATULA 100HS		46	6H929001	CLUTCH PLATE
18 TATULA 100HS		47	6J313901	CLUTCH SPRING
18 TATULA 100HS		48	6J695402	PINION GEAR
18 TATULA 100HS		49	6H180501	PINON RETAINER
18 TATULA 100HS		50	6G431102	PINION BALL BEARING
18 TATULA 100HS		51	6J692202	RS PLATE
18 TATULA 100HS		52	6B055201	MECHANICAL BRAKE O-RING
18 TATULA 100HS		53	6J213101	MECHANICAL BRAKE WASHER (A)
18 TATULA 100HS		54	6B175503	MECHANICAL BRAKE WASHER (B)
18 TATULA 100HS		55	6J692501	ZERO ADJUSTE KNOB(MCNICL.BR.KNOB)
18 TATULA 100HS		56	6G040828	RS PLATE SCREW (A)
18 TATULA 100HS		57	63205901	WORM SHAFT RETAINER
18 TATULA 100HS		58	6B411702	WORM SHAFT WASHER(0.1MM)
18 TATULA 100HS		59	6G720001	WORM SHAFT COLLAR
18 TATULA 100HS		60	6J243303	LEVEL WIND
18 TATULA 100HS		61	61214212	PAWL
18 TATULA 100HS		62	63731300	PAWL WASHER(0.1MM)
18 TATULA 100HS		63	6F402801	PAWL HOLDER NUT
18 TATULA 100HS		64	6J694001	WORM SHIELD
18 TATULA 100HS		65	6J243601	WORM SHAFT
18 TATULA 100HS		66	6G720001	WORM SHAFT COLLAR
18 TATULA 100HS		67	6J693901	WORM SHAFT GEAR
18 TATULA 100HS		68	6B339801	WORM SHAFT GEAR RETAINER

