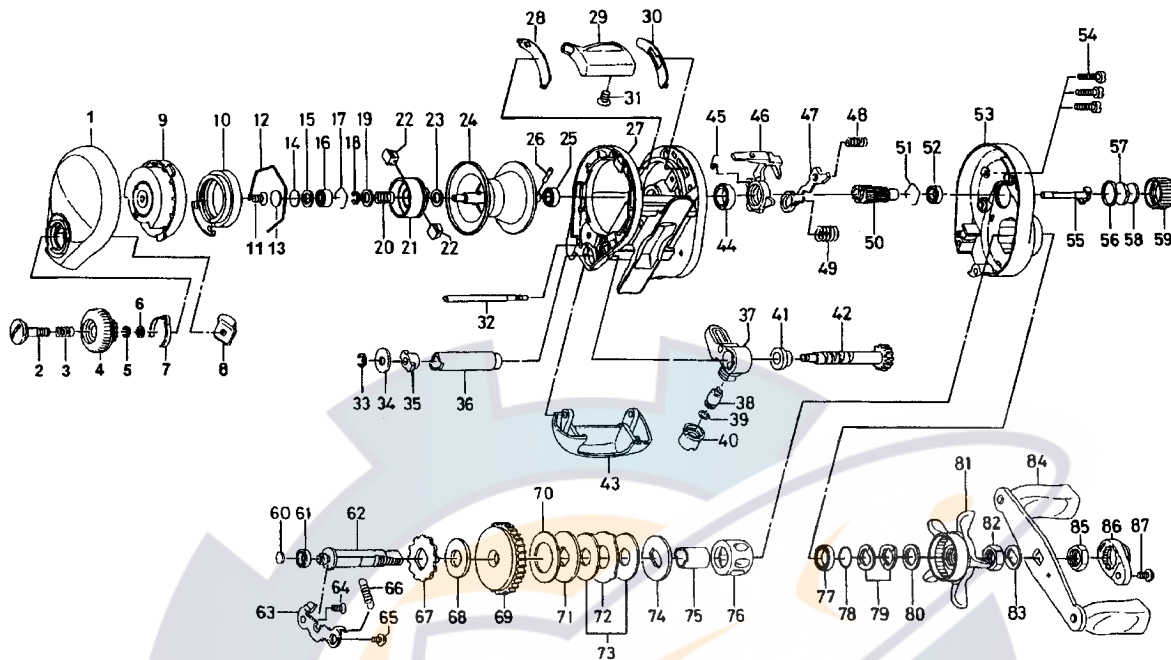




# BAITCASTING REEL TEAM DAIWA-S103HSD / 103 PSD



| Key No. | Parts No. | Parts Name             | Key No. | Parts No. | Parts Name              |
|---------|-----------|------------------------|---------|-----------|-------------------------|
| 1       | F74-4001  | L/S PLT                | 52      | F05-5601  | BALL BEARING C          |
| 2       | F57-7901  | SET PLT SCREW          | 53      | F74-3601  | R/S PLT                 |
| 3       | E16-7101  | SET PLT SPRING         | 54      | 351-1001  | R/S PLT SCREW           |
| 4       | F57-7801  | BRAKE ADJ KNOB         | 55      | F74-3001  | PINION SHAFT            |
| 5       | B33-9801  | BRAKE DIAL RET A       | 56      | 171-5201  | O RING                  |
| 6       | F63-7701  | BRAKE DIAL WASHER      | 57      | B17-5401  | SPOOL ADJ CAP METAL     |
| 7       | F05-1701  | BRAKE CLICK SPRING     | 58      | B17-5503  | SPACER D                |
| 8       | F61-3401  | BRAKE DIAL RET B       | 59      | F74-6401  | CAST CONTROL CAP        |
| 9       | F71-7802  | LEFT SET PLT           | 60      | F57-5601  | DRIVE SHAFT WASHER A    |
| 10      | F71-7702  | MAGNET HOLDER          | 61      | F64-8301  | BUSHING                 |
| 11      | 351-8903  | LEFT SET PLT SCREW     | 62      | G18-2701  | DRIVE SHAFT             |
| 12      | B54-3201  | MAGNET HOLDER RET RING | 63      | F58-2201  | DRIVE SHAFT RET         |
| 13      | 375-7404  | SPACER A               | 64      | F21-1101  | DRIVE SHAFT RET SCREW A |
| 14      | 375-7411  | SPACER B               | 65      | 353-8301  | DRIVE SHAFT RET SCREW B |
| 15      | F57-4303  | SPACER C               | 66      | F62-0401  | CLUTCH TRIP PLT SPRING  |
| 16      | E08-8003  | BALL BEARING A         | 67      | F76-1701  | A/R RATCHET             |
| 17      | E21-9701  | BEARING RET A          | 68      | F19-0101  | DRIVE SHAFT WASHER B    |
| 18-26   | Z01-2397  | SPOOL                  | 69      | G18-3401  | DRIVE GEAR              |
| 27      | G18-2601  | FRAME                  | 70      | F79-6201  | DRAG WASHER A           |
| 28      | F57-5102  | CLUTCH LEVER PLT A     | 71      | F79-6301  | KEY WASHER A            |
| 29      | F57-5502  | CLUTCH LEVER           | 72      | F79-6101  | EARED WASHER            |
| 30      | F57-5002  | CLUTCH LEVER PLT B     | 73      | F96-7801  | DRAG WASHER B           |
| 31      | F21-1103  | CLUTCH LEVER SCREW     | 74      | G14-1801  | KEY WASHER B            |
| 32      | F57-3401  | STABILIZER BAR         | 75      | G18-5201  | GEAR SHAFT COLLAR       |
| 33      | 320-5901  | WORM SHAFT RET         | 76      | F58-0601  | ROLLER CLUTCH           |
| 34      | F65-5501  | WORM SHAFT WASHER      | 77      | B86-1702  | BALL BEARING D          |
| 35      | B71-5601  | WORM SHAFT HOLDER A    | 78      | B55-3801  | BEARING WASHER          |
| 36      | F90-5001  | LEVEL WIND GUARD       | 79      | 150-8901  | DRAG SPRING WASHER      |
| 37      | F74-5501  | LINE GUIDE             | 80      | 373-7806  | SPACING SLEEVE          |
| 38      | 121-4212  | LINE GUIDE PAWL        | 81      | F40-3202  | STAR DRAG               |
| 39      | F95-0200  | LINE GUIDE WASHER      | 82      | B43-3601  | DRAG NUT                |
| 40      | F40-2803  | PAWL CAP               | 83      | 150-9001  | FRICTION WASHER         |
| 41      | F90-5101  | WORM SHAFT HOLDER B    | 84      | F74-6101  | HANDLE                  |
| 42      | F74-3801  | WORM SHAFT             | 85      | B43-3601  | HANDLE NUT              |
| 43      | F57-5205  | FRONT PLT              | 86      | F05-4402  | HANDLE NUT RET          |
| 44      | B86-1702  | BALL BEARING B         | 87      | 351-1803  | HANDLE NUT PLT SCREW    |
| 45      | F56-1901  | CLUTCH CAM SPRING      |         |           |                         |
| 46      | F57-5301  | CLUTCH CAM             |         |           |                         |
| 47      | F58-2301  | YOKE                   |         |           |                         |
| 48      | F58-8001  | YOKE SPRING A          |         |           |                         |
| 49      | E16-7101  | YOKE SPRING B          |         |           |                         |
| 50      | F57-5701  | PINION GEAR            |         |           |                         |
| 51      | E21-9701  | BEARING RET B          |         |           |                         |

| S103PSD Special Parts |           |             |
|-----------------------|-----------|-------------|
| Key No.               | Parts No. | Parts Name  |
| 27                    | G18-2602  | FRAME       |
| 42                    | F74-3802  | WORM SHAFT  |
| 50                    | F58-3401  | PINION GEAR |
| 69                    | G18-2801  | DRIVE GEAR  |