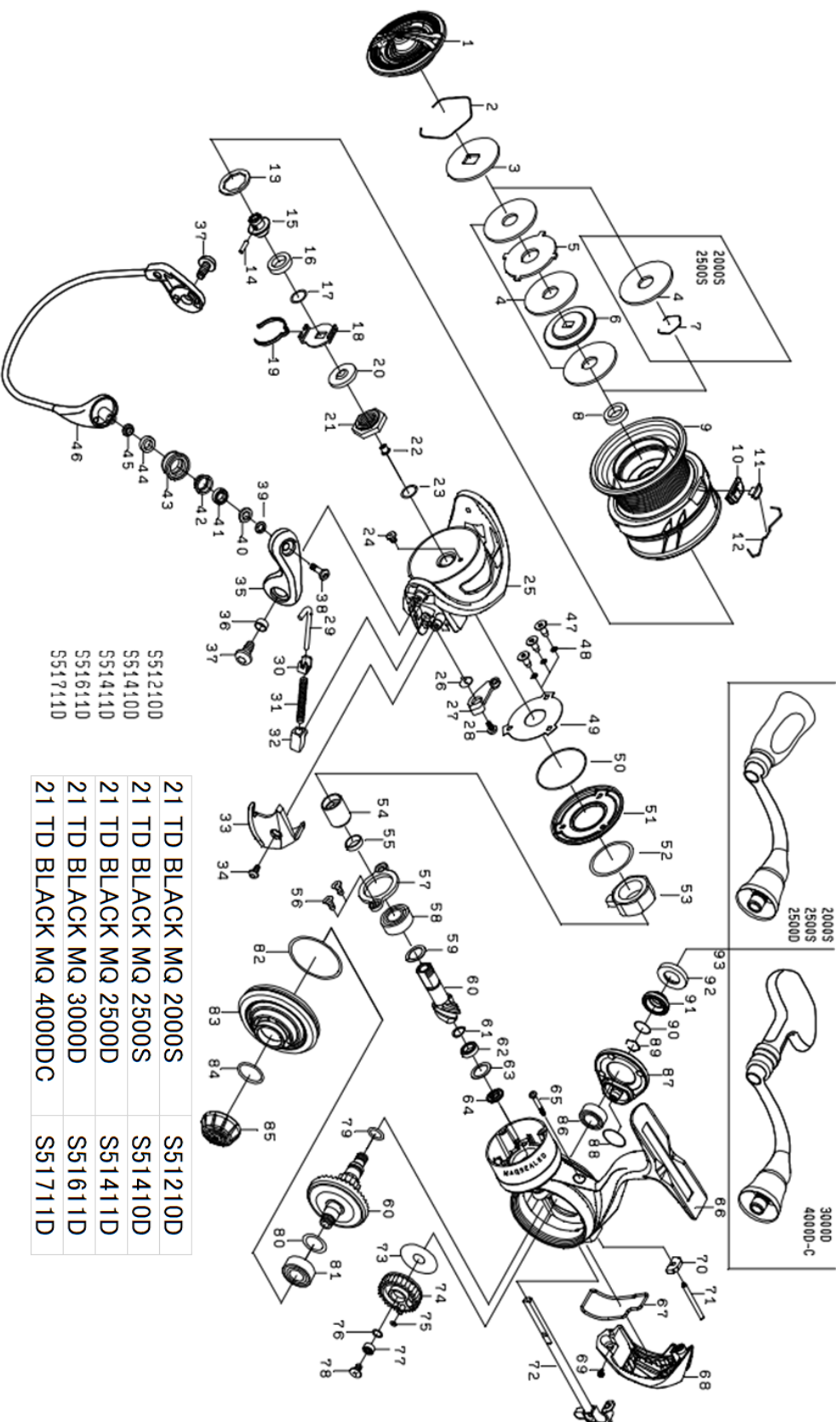




21 TD BLACK MQ 3000D

Feel Alive.

Please quote by part number, not key number when ordering.
spares@daiwaaustralia.com.au PH: (02) 8644 8644



| REEL NAME | MGFT CODE | KEY NO | PARTS CODE | DESCRIPTION |
|----------------------|-----------|--------|------------|--------------------------------|
| 21 TD BLACK MQ 3000D | S51611D | 1 | 6Q749701 | DRAG KNOB |
| 21 TD BLACK MQ 3000D | S51611D | 2 | 6Q346101 | DRAG WASHER RETAINER |
| 21 TD BLACK MQ 3000D | S51611D | 3 | 6Q621901 | KEY WASHER (A) |
| 21 TD BLACK MQ 3000D | S51611D | 4 | 6J678801 | ATD DRAG WASHER (1 pack-3 pcs) |
| 21 TD BLACK MQ 3000D | S51611D | 5 | 6J546902 | EARED WASHER |
| 21 TD BLACK MQ 3000D | S51611D | 6 | 6J549001 | KEY WASHER (B) |
| 21 TD BLACK MQ 3000D | S51611D | 7 | ----- | ----- |
| 21 TD BLACK MQ 3000D | S51611D | 8 | 6Q621001 | SPOOL COLLAR(A) |
| 21 TD BLACK MQ 3000D | S51611D | 9 | 6Q750201 | SPOOL ASSY |
| 21 TD BLACK MQ 3000D | S51611D | 10 | 6Q345601 | LINE STOPPER PLATE |
| 21 TD BLACK MQ 3000D | S51611D | 11 | 6Q345501 | LINE STOPPER |
| 21 TD BLACK MQ 3000D | S51611D | 12 | 6Q345701 | LINE STOPPER SPRING |
| 21 TD BLACK MQ 3000D | S51611D | 13 | 6J546304 | SPOOL WASHER(A) |
| 21 TD BLACK MQ 3000D | S51611D | 14 | 6J558201 | SPOOL METAL SCREW |
| 21 TD BLACK MQ 3000D | S51611D | 15 | 6J549501 | SPOOL METAL |
| 21 TD BLACK MQ 3000D | S51611D | 16 | 6H624801 | SPOOL COLLAR(B) |
| 21 TD BLACK MQ 3000D | S51611D | 17 | 6J602201 | SPOOL WASHER(B) |
| 21 TD BLACK MQ 3000D | S51611D | 18 | 6M021401 | CLICK HOLDER |
| 21 TD BLACK MQ 3000D | S51611D | 19 | 6H416101 | CLICK LEAF SPRING |
| 21 TD BLACK MQ 3000D | S51611D | 20 | 6H986901 | ROTOR NUT PACKING |
| 21 TD BLACK MQ 3000D | S51611D | 21 | 6Q735801 | ROTOR NUT |
| 21 TD BLACK MQ 3000D | S51611D | 22 | 6J808500 | ROTOR NUT COLLAR |
| 21 TD BLACK MQ 3000D | S51611D | 23 | 63727602 | ROTOR NUT WASHER |
| 21 TD BLACK MQ 3000D | S51611D | 24 | 6H022701 | ROTOR NUT SCREW |
| 21 TD BLACK MQ 3000D | S51611D | 25 | 6Q120538 | ROTOR |
| 21 TD BLACK MQ 3000D | S51611D | 26 | 6H413601 | BAIL TRIP LEVER SPRING |
| 21 TD BLACK MQ 3000D | S51611D | 27 | 6Q120701 | BAIL TRIP LEVER |
| 21 TD BLACK MQ 3000D | S51611D | 28 | 6H417701 | BAIL TRIP LEVER SCREW |
| 21 TD BLACK MQ 3000D | S51611D | 29 | 6Q121201 | ARM LEVER SHAFT |
| 21 TD BLACK MQ 3000D | S51611D | 30 | 6H576101 | ARM LEVER SPRING COLLAR |
| 21 TD BLACK MQ 3000D | S51611D | 31 | 6H545701 | ARM LEVER SPRING |
| 21 TD BLACK MQ 3000D | S51611D | 32 | 6Q121501 | ARM LEVER SPRING HOLDER |
| 21 TD BLACK MQ 3000D | S51611D | 33 | 6Q121804 | ARM LEVER COVER |
| 21 TD BLACK MQ 3000D | S51611D | 34 | 6H431303 | ARM LEVER COVER SCREW |
| 21 TD BLACK MQ 3000D | S51611D | 35 | 6Q609703 | ARM LEVER |
| 21 TD BLACK MQ 3000D | S51611D | 36 | 6Q121701 | ARM LEVER COLLAR |
| 21 TD BLACK MQ 3000D | S51611D | 37 | 6H431203 | ARM LEVER SCREW |
| 21 TD BLACK MQ 3000D | S51611D | 38 | 6H697703 | ROLLER SCREW |
| 21 TD BLACK MQ 3000D | S51611D | 39 | 6Q620901 | ROLLER COLLAR(A) |
| 21 TD BLACK MQ 3000D | S51611D | 40 | 6H038301 | ROLLER BALL BEARING PACKING |
| 21 TD BLACK MQ 3000D | S51611D | 41 | 6G686903 | ROLLER BALL BEARING |
| 21 TD BLACK MQ 3000D | S51611D | 42 | 6H960901 | ROLLER COLLAR(B) |
| 21 TD BLACK MQ 3000D | S51611D | 43 | 6G686701 | LINE ROLLER |
| 21 TD BLACK MQ 3000D | S51611D | 44 | 6H960801 | ROLLER COLLAR(C) |
| 21 TD BLACK MQ 3000D | S51611D | 45 | 6Q610001 | ROLLER COLLAR(D) |
| 21 TD BLACK MQ 3000D | S51611D | 46 | 6Q750101 | BAIL |
| 21 TD BLACK MQ 3000D | S51611D | 47 | 6G837101 | MAGSEALED PLATE SCREW |
| 21 TD BLACK MQ 3000D | S51611D | 48 | 63754102 | MAGSEALED PLATE SCREW WASHER |
| 21 TD BLACK MQ 3000D | S51611D | 49 | 6J675201 | MAGSEALED PLATE |
| 21 TD BLACK MQ 3000D | S51611D | 50 | 6J354801 | MADSEALED CAP O RING |
| 21 TD BLACK MQ 3000D | S51611D | 51 | 6Q609601 | MAGSEALED CAP |
| 21 TD BLACK MQ 3000D | S51611D | 52 | 6J639901 | ONEWAY CLUTCH WASHER |
| 21 TD BLACK MQ 3000D | S51611D | 53 | 6J388402 | ONEWAY CLUTCH |
| 21 TD BLACK MQ 3000D | S51611D | 54 | 6J536102 | CLUTCH RING |

