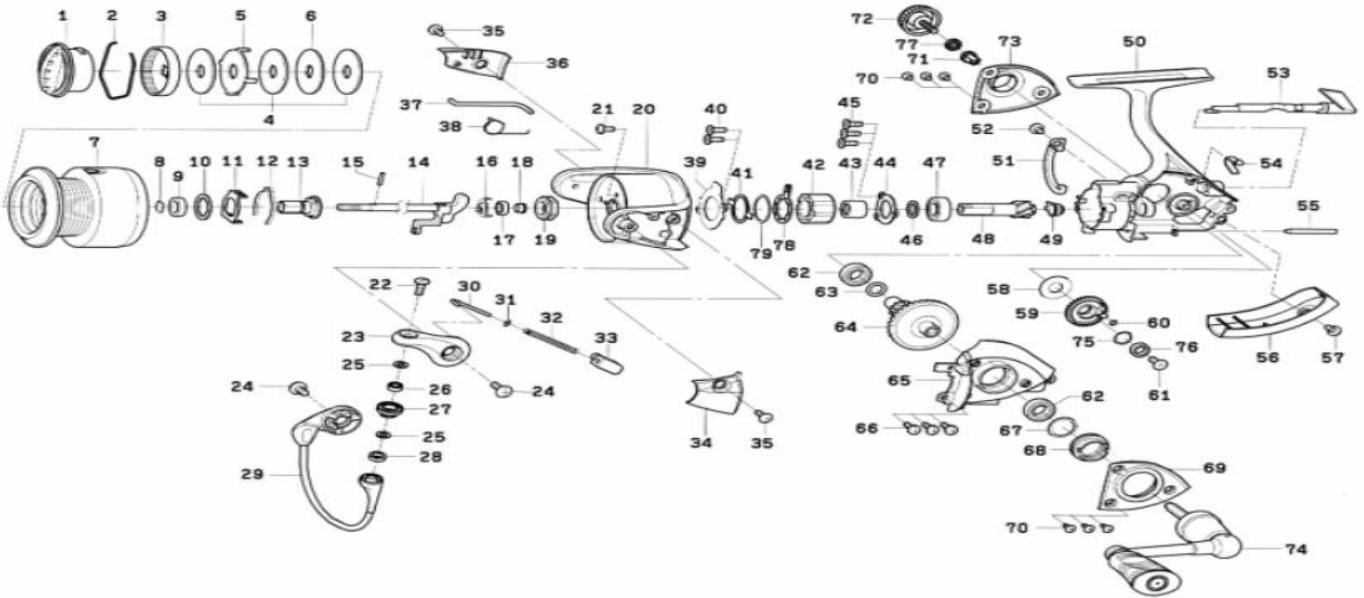


SPINNING REEL

**TD-ADVANTAGE 1500A/2000A**



Key No.	Parts No.	Parts Name
1	H03-9301	Drag Knob
2	F74-2501	Drag Washer Retainer
3	F90-8701	Drag knob Click Plate
4	F63-5001	Drag Washer
5	F63-5201	Eared Washer
6	F63-5101	Key Washer
2-7	H03-9101	Spool Assembly
2-7	H03-9101	Spool Assembly (Extra Spool)
8	G47-2401	Collar Retainer
9	G72-0401	Collar (A)
10	F62-5501	Washer (A)
11	G69-3901	Click Leaf Spring Holder
12	F70-4901	Spool Click Leaf Spring
13	G62-7901	Spool Metal
14	G62-9602	Main Shaft
15	G37-5001	Pin
16	G47-1501	Bearing Retainer (A)
17	G46-6202	Ball Bearing (A)
18	G61-3501	Collar (B)
19	G47-1301	Rotor Nut
20	G63-0514	Rotor
21	G62-7701	Screw (A)
22	G19-5601	Screw (B)
23	G61-2317	Bail Arm
24	G20-5001	Screw (C)
25	F89-7101	Washer (B)
26	G28-1601	Ball Bearing (B)
27	F92-1601	Line Roller
28	G04-7601	Collar (C)
29	G63-0701	Bail Assembly
30	G47-1803	Bail Spring Shaft
31	E31-3901	Washer (C)
32	G47-1701	Bail Spring
33	G61-2101	Bail Spring Holder
34	G63-0601	Cover (A)
35	G27-0801	Screw (D)
36	G63-0901	Cover (B)
37	G63-0801	Bail Trip Lever
38	G61-3101	Bail Trip Lever Spring
39	G61-1201	Roller Clutch Retainer

Key No.	Parts No.	Parts Name
40	G55-7101	Screw (E)
41	G46-5401	Clutch Cam Retainer
42	G22-0601	Roller Clutch
43	G46-7501	Spacing Sleeve
44	G46-7402	Bearing Retainer (B)
45	G55-7101	Screw (F)
46	375-8509	Washer (D)
47	G53-5101	Ball Bearing (C)
48	G63-0001	Pinion Gear
49	G61-0901	Collar (D)
50	H03-8901	Body
51	G61-1801	Brake Shoe
52	F50-5701	Screw (G)
53	G60-9921	Anti-Reverse Lever
54	G62-7801	Anti-Reverse Cam Spring
55	G62-9901	Stabilizer Bar
56	G63-0406	Rear Cover
57	351-1801	Screw (H)
58	G61-0103	Washer (E)
59	G62-9501	Oscillating Gear
60	G46-6001	"O" Ring (A)
61	G46-6301	Screw (I)
62	G46-7302	Ball Bearing (D)
63	G67-0501	"O" Ring (B)
64	G69-9002	Drive Gear
65	G63-0206	Side Cover
66	G46-8301	Screw (J)
67	G61-3400	Washer (F)
68	G61-2401	Screw (K)
69	G63-0301	Bearing Retainer (C)
70	G61-1501	Screw (L)
71	F72-1001	Collar (E)
72	G61-4302	Handle Screw
73	G63-0101	Bearing Retainer (D)
74	H03-9001	Handle Assembly
75	G46-6100	Washer (G)
76	G46-6202	Ball Bearing (E)
77	160-8101	Washer (H)
78	F89-6801	Clutch Cam
79	F83-3000	Washer (I)

Key No.	Parts No.	Parts Name
2-7	H03-9401	Spool Assembly
2-7	H03-9401	Spool Assembly (Extra Spool)