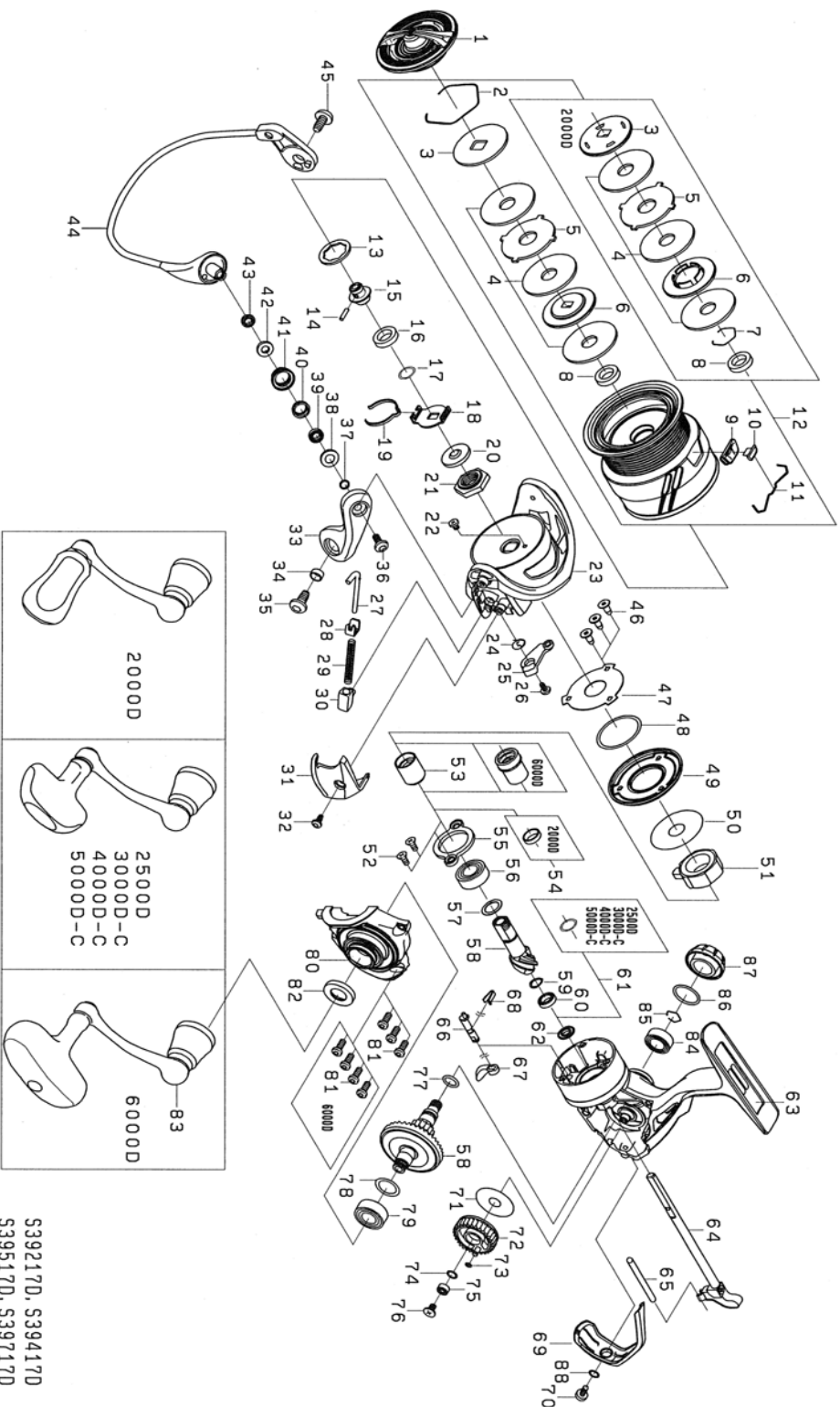




18 TD BLACK LT 2500D

Feel Alive.

Please quote by part number, not key number when ordering.
spares@daiwaaustralia.com.au PH: (02) 8644 8644



S39217D, S39417D
S39517D, S39717D
S39817D, S39917D

REEL NAME	MGFT CODE	KEY NO	PARTS CODE	DESCRIPTION
18 TD BLACK LT 2500D		1	6J547202	DRAG KNOB
18 TD BLACK LT 2500D		2	6J547101	DRAG RING
18 TD BLACK LT 2500D		3	6J547001	DRAG DISC WASHER(A)
18 TD BLACK LT 2500D		4	6J678801	DRAG WASHER
18 TD BLACK LT 2500D		5	6J546902	DRAG LIP WASHER
18 TD BLACK LT 2500D		6	6J549001	DRAG DISC WASHER(B)
18 TD BLACK LT 2500D		7	-	-
18 TD BLACK LT 2500D		8	6J546701	DRAG COLLAR
18 TD BLACK LT 2500D		9	6J558101	LINE STOPPER PLATE
18 TD BLACK LT 2500D		10	6J558001	LINE STOPPER
18 TD BLACK LT 2500D		11	6J314801	LINE STOPPER SPRING
18 TD BLACK LT 2500D		12	6J767501	SPOOL ASSY
18 TD BLACK LT 2500D		13	6J546300	SPOOL WASHER
18 TD BLACK LT 2500D		14	6J558201	SPOOL METAL SCREW
18 TD BLACK LT 2500D		15	6J549501	SPOOL METAL
18 TD BLACK LT 2500D		16	6H624801	SPOOL METAL COLLAR
18 TD BLACK LT 2500D		17	6J602201	CLICK HOLDER WASHER
18 TD BLACK LT 2500D		18	6J546201	CLICK HOLDER
18 TD BLACK LT 2500D		19	6J525101	CLICK LEAF SPRING
18 TD BLACK LT 2500D		20	6H986901	ROTOR NUT PACKING
18 TD BLACK LT 2500D		21	6H961101	ROTOR NUT
18 TD BLACK LT 2500D		22	6H022701	ROTOR NUT SCREW
18 TD BLACK LT 2500D		23	6J545301	ROTOR
18 TD BLACK LT 2500D		24	6H413601	KICK LEVER SPRING
18 TD BLACK LT 2500D		25	6J545401	KICK LEVER AS
18 TD BLACK LT 2500D		26	6H417701	KICK LEVER SCREW
18 TD BLACK LT 2500D		27	6J545601	ARM LEVER SHAFT
18 TD BLACK LT 2500D		28	6H576101	ARM LEVER SHAFT PLATE
18 TD BLACK LT 2500D		29	6J642801	ARM LEVER SHAFT SPRING
18 TD BLACK LT 2500D		30	6H414301	ARM LEVER SHAFT HOLDER
18 TD BLACK LT 2500D		31	6J545702	ARM LEVER SP COVER
18 TD BLACK LT 2500D		32	6H431301	ARM LEVER SP COVER SCREW
18 TD BLACK LT 2500D		33	6H960107	ARM LEVER
18 TD BLACK LT 2500D		34	6H962401	ARM LEVER COLLAR
18 TD BLACK LT 2500D		35	6H431201	ARM LEVER SCREW
18 TD BLACK LT 2500D		36	6H697701	ROLLAR SCREW
18 TD BLACK LT 2500D		37	6H961001	ROLLAR COLLAR(A)
18 TD BLACK LT 2500D		38	6H038301	ROLLAR BEARING PACKING
18 TD BLACK LT 2500D		39	6G686903	ROLLARE BALL BEARING
18 TD BLACK LT 2500D		40	6H960901	ROLLARE BEARING COLLARE
18 TD BLACK LT 2500D		41	6G686703	LINE ROLLAR
18 TD BLACK LT 2500D		42	6H960801	ROLLAR COLLAR(B)
18 TD BLACK LT 2500D		43	6H960701	ROLLAR COLLAR(C)
18 TD BLACK LT 2500D		44	6J778901	BAIL AS
18 TD BLACK LT 2500D		45	6H431201	BAIL HOLDER SCREW
18 TD BLACK LT 2500D		46	6J429301	MAGSEALED PLATE SCREW
18 TD BLACK LT 2500D		47	6J675201	MAGSEALED PLATE
18 TD BLACK LT 2500D		48	6J354801	MAGSEALED PLATE O-RING
18 TD BLACK LT 2500D		49	6J445901	MAGSEALED CAP
18 TD BLACK LT 2500D		50	6J639900	ONEWAY CLUTCH WASHER
18 TD BLACK LT 2500D		51	6J388401	ONEWAY CLUTCH
18 TD BLACK LT 2500D		52	6G997301	PINION BEARING PLATE SCREW
18 TD BLACK LT 2500D		53	6J001402	CLUTCH RING AS
18 TD BLACK LT 2500D		54	-	-
18 TD BLACK LT 2500D		55	6H442202	PINION BEARING PLATE
18 TD BLACK LT 2500D		56	6G467302	PINION BALL BEARING (A)
18 TD BLACK LT 2500D		57	63758500	PINION BEARING WASHER (A)
18 TD BLACK LT 2500D		58	6Z023619	PINION + DRIVE GEAR SET
18 TD BLACK LT 2500D		59	6J683001	PINION BEARING SPRING WASHER (B)
18 TD BLACK LT 2500D		60	6H959601	PINION BALL BEARING (B)

