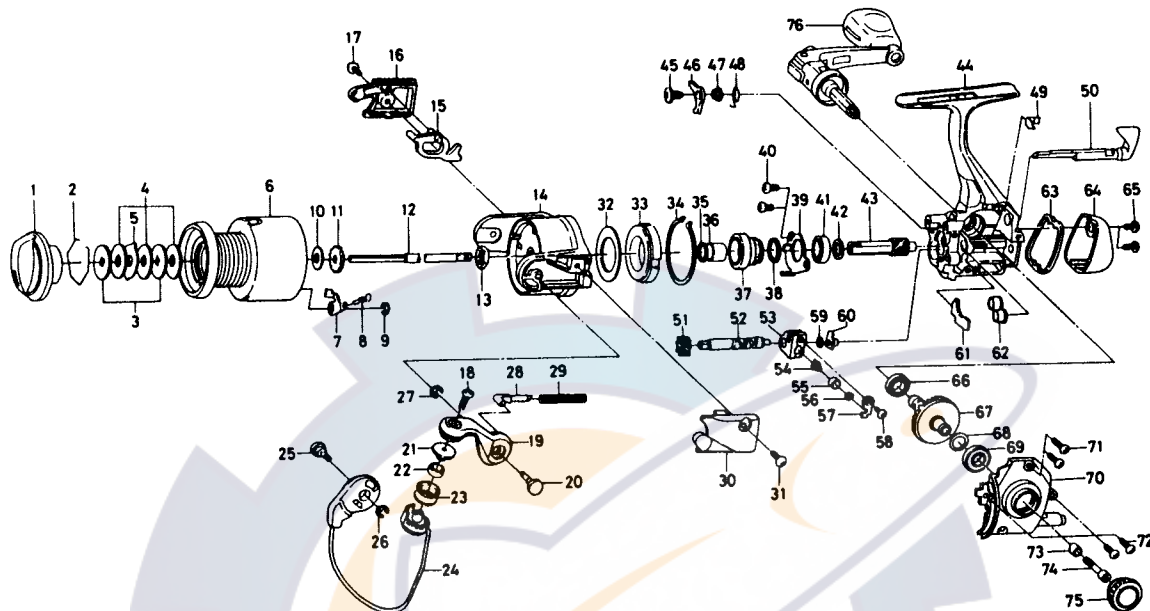


# SPINNING REEL TEAM DAIWA-X1500i/2000i



Key NO.	Parts No.	Parts Name
2-9	F29-6708	Spool assembly
1	F20-4407	Drag knob
2	171-7701	Drag washer retainer
3	E13-6101	Key washer
4	E13-6001	Drag washer
5	E13-6201	Eared washer
6	E29-7811	Spool assembly
7	E13-2101	Click pawl
8	B61-8801	Click spring
9	320-5901	Click retainer
10	E39-4001	Spool washer
11	E36-5301	Click gear
12	F15-8401	Main shaft
13	F33-5101	Rotor nut
14	F30-5202	Rotor
15	F30-6001	Bail trip lever
16	F15-3107	Bail trip cover
17	E36-4203	Bail trip cover screw
18	B67-9306	Line roller screw
19	F15-2405	Bail arm
20	F15-2501	Bail arm screw
21	F06-6302	Line roter collar
22	F05-5601	Ball beadng A
23	F30-5101	Line roller
24	F33-4101	Bail assembly
25	F15-2501	Bail trip cam screw
26	320-5901	Bail trip cam & crew retainer
27	320-5901	Bail arm screw retainer
28	E36-8201	Bail spring shaft
29	F36-2501	Bail spring
30	F30-5603	Bail spring cover
31	E36-4203	Bail spring cover screw
32	F19-7202	Oiled washer
33	F15-3301	Roller clutch
34	F21-2501	Roller clutch retainer
35	375-8507	Spacing sleeve A
36	F15-5101	Spacing sleeve B
37	F15-1201	Anti-reverse ratchet
38	F26-8501	Bearing washer
39	F15-1102	Bearing retainer
40	F21-2201	Bearing retainer screw
41	637-5701	Ball bearing B

Key NO.	Parts No.	Parts Name
42	F26-3101	Pinion washer
43	F15-1002	Pinion gear
44	F26-4702	Body assembly
45	L00-1801	Anti-reverse pawl screw
46	F15-1501	Anti-reverse pawl
47	F15-8301	Anti-reverse pawl collar
48	F15-1601	Anti-reverse pawl spring
49	F15-0701	Anti-reverse cam spring
50	F15-0803	Anti-reverse lever
51	E41-5801	Worm shaft gear
52	F15-1902	Worm shaft
53	F12-2601	Oscillating slider
54	E12-2403	Oscillating pawl
55	E12-4601	Oscillating pawl bush
56	375-0801	Oscillating pawl washer
57	E11-6801	Oscillating slider cover
58	E15-0203	Oscillating slider cover screw
59	375-4101	Worm shaft washer
60	F05-6901	Worm shaft collar
61	F08-7201	Shield plate
62	F15-1701	Pinion collar
63	F15-3705	Water shield
64	F15-3805	Rear cover
65	E24-8103	Rear cover screw
66	E30-6801	Ball bearing C
67	E42-0103	Drive gear
68	375-8501	Ball gear washer
69	637-5701	Ball bearing B
70	F15-2203	Side cover
71	E13-0503	Side cover screw A
72	E13-0501	Side cover screw B
73	F16-9301	Handle collar
74	F3G-3701	Handle screw
75	F32-9901	Handle screw cap
76	F33-4201	Handle assembly

**X2000i Special parts**

2-9	F15-8508	Spool assembly
6	F15-8608	Spool assembly
14	F30-9102	Rotor
24	F33-4401	Bail assembly