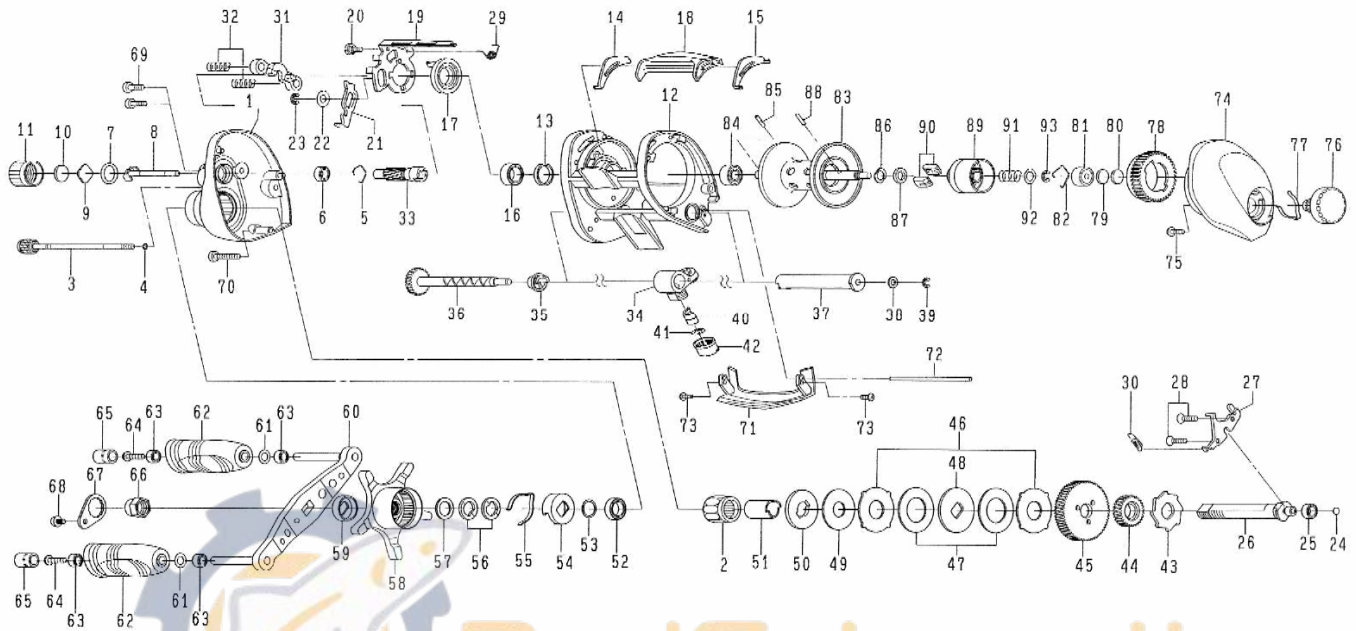


Please order by parts number, not key number  
 Veuillez indiquer le numéro de la pièce.



# TD-ADVANTAGE 153HSTLA



ReelSchematic

Key No.	Parts No.	Parts Name	Key No.	Parts No.	Parts Name
1	G60-1505	Left side plate	43	F76-1701	Clutch wheel
2	G81-9801	Roller clutch	44	G00-1501	Drive gear (A)
3	G71-8402	Left side plate screw (A)	45	G60-2101	Drive gear (B)
4	B85-3101	"O" ring (A)	46	F79-6101	Eared washer
5	E21-9701	Bearing retainer (A)	47	G42-8501	Drag washer (A)
6	G46-6202	Ball bearing (A)	48	F79-6301	Key washer (A)
7	171-5201	O'ring (B)	49	G45-5801	Drag washer (B)
8	F80-0501	Pinion shaft	50	G14-1801	Key washer (B)
9	B17-5401	Spool adjusting cap metal	51	G54-5001	Gear shaft collar
10	B17-5503	Spacer (A)	52	F58-2501	Ball bearing (D)
11	F57-4413	Cast control cap	53	B55-3801	Bearing washer
12	G60-1704	Frame assembly	54	F02-8201	Click leaf spring holder
13	F83-4701	Clutch cam washer	55	F03-2401	Click leaf spring
14	G54-3501	Spacer (B)	56	150-8901	Drag spring washer
15	G54-3401	Spacer (C)	57	373-7810	Spacing sleeve
16	B86-1701	Ball bearing (B)	58	G87-4602	Star drag
17	F99-7401	Clutch cam (A)	59	F85-0402	Handle collar
1B	G87-4501	Clutch lever	60	G87-5101	Handle assembly
19	G60-1801	Clutch cam (B)	61	F19-7001	Handle knob washer
20	G00-9701	Clutch cam screw	62	G87-5301	Handle knob
21	G26-1101	Clutch trip plate	63	F28-3101	Ball bearing (E)
22	371-6905	Washer	64	B67-9308	Handle knob screw
23	320-1402	Retainer	65	G55-1901	Handle nut (A)
24	G35-7506	Drive shaft washer	66	G79-3302	Handle nut (B)
25	F05-5601	Ball bearing (C)	67	040-3209	Handle nut plate
26	G83-0702	Drive shaft	68	353-8301	Handle nut screw
27	G60-1901	Drive shaft retainer	69	G04-0801	Left side plate screw (B)
28	E13-4508	Drive shaft retainer screw	70	G47-3501	Left side plate screw (C)
29	G60-2201	Clutch cam spring	71	G54-5307	Front plate
30	G01-0201	Clutch trip plate spring	72	G54-5401	Stabilizer bar
31	F99-8201	Yoke	73	B36-0401	Front plate screw
32	G59-7301	Yoke spring	74	G60-5807	Right side plate
33	G60-2001	Pinion gear	75	F21-2201	Set plate screw
34	G54-4301	Line guide	76	F82-1214	Brake adjusting knob
35	G12-8201	Worm shaft holder	77	F26-2701	Brake click spring
36	G54-4601	Worm shaft assembly	78	G54-5701	Magnet holder
37	G54-4801	Level wind guard	79	375-7411	Spacer (D)
38	373-1306	Worm shaft washer	80	375-7404	Spacer (E)
39	320-5901	Worm shaft retainer	81	637-4601	Ball bearing (F)
40	121-4212	Line guide pawl	82	F03-2201	Bearing retainer (B)
41	373-1300	Line guide washer	83-93	Z01-8091	Spool assembly
42	F40-2801	Pawl cap			

