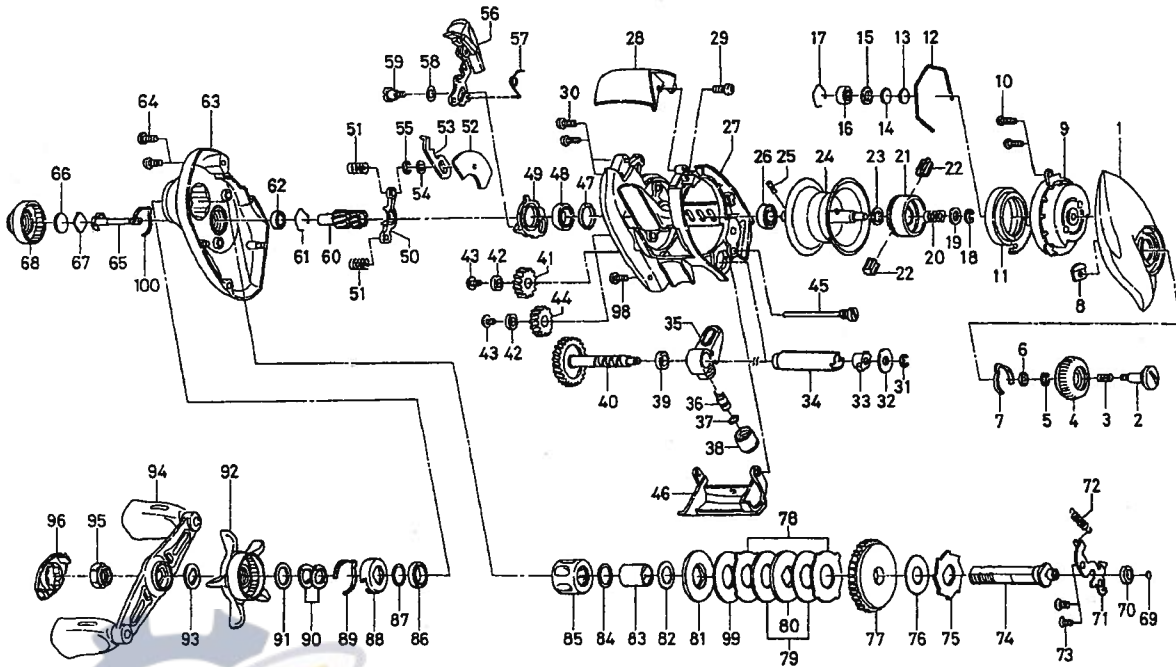


BAITCASTING REEL TEAM DAIWA-Z103HL



| Key No. | Parts No. | Parts Name | Key No. | Parts No. | Parts Name |
|---------|-----------|------------------------|---------|-----------|---------------------------|
| 1 | F83-7901 | R/S PLT | 55 | 320-5901 | CLUTCH TRIP PLT RET |
| 2 | F63-1301 | SET PLT SCREW | 56 | F86-5301 | CLUTCH LEVER |
| 3 | E16-7101 | SET PLT SPRING | 57 | F94-5001 | CLUTCH LEVER SPRING |
| 4 | F61-3302 | BRAKE ADJ KNOB | 58 | F83-5401 | CLUTCH LEVER WASHER |
| 5 | B33-9801 | BRAKE DIAL RET A | 59 | F83-5301 | CLUTCH LEVER SCREW |
| 6 | F63-7701 | BRAKE DIAL WASHER | 60 | F84-5401 | PINION GEAR |
| 7 | F05-1701 | BRAKE CLICK SPRING | 61 | E21-9701 | BEARING RET B |
| 8 | F61-3401 | BRAKE DIAL RET B | 62 | F05-5601 | BALL BEARING E |
| 9 | F83-8001 | RIGHT SET PLT | 63 | F83-3402 | L/S PLT |
| 10 | F93-9701 | RIGHT SET PLT SCREW | 64 | 351-1107 | L/S PLT SCREW A |
| 11 | F71-7702 | MAGNET HOLDER | 65 | F80-0501 | PINION SHAFT |
| 12 | B54-3201 | MAGNET HOLDER RET RING | 66 | B17-5401 | SPOOL ADJ CAP METAL |
| 13 | 375-7404 | SPACER A | 67 | B17-5503 | SPACER D |
| 14 | 375-7411 | SPACER B | 68 | F83-3901 | CAST CONTROL CAP |
| 15 | F57-4303 | SPACER C | 69 | F64-7201 | DRIVE SHAFT WASHER A |
| 16 | F57-7702 | BALL BEARING A | 70 | F05-5601 | BALL BEARING F |
| 17 | E21-9701 | BEARING RET A | 71 | F83-5701 | DRIVE SHAFT RET |
| 18-26 | Z01-2310 | SPOOL | 72 | F68-9501 | CLUTCH TRIP PLT SPRING |
| 27 | F83-4001 | FRAME | 73 | F21-1101 | DRIVE SHAFT RET SCREW |
| 28 | F83-7501 | REAR COVER | 74 | F83-5601 | DRIVE SHAFT |
| 29 | 351-1006 | REAR COVER SCREW A | 75 | F83-6901 | A/R RATCHET |
| 30 | G04-0801 | REAR COVER SCREW B | 76 | E42-5301 | DRIVE SHAFT WASHER B |
| 31 | 320-5901 | WORM SHAFT RET | 77 | F83-7001 | DRIVE GEAR |
| 32 | F65-5501 | WORM SHAFT WASHER | 78 | F79-6102 | EARED WASHER |
| 33 | B71-5601 | WORM SHAFT HOLDER | 79 | F79-6201 | DRAG WASHER A |
| 34 | F83-6501 | LEVEL WIND GUARD | 80 | F79-6303 | KEY WASHER A |
| 35 | F83-6201 | LINE GUIDE PAWL HOLDER | 81 | F79-6401 | KEY WASHER B |
| 36 | 121-4212 | LINE GUIDE PAWL | 82 | E42-5401 | SPACING SLEEVE A |
| 37 | F95-0200 | LINE GUIDE WASHER | 83 | F60-2901 | GEAR SHAFT COLLAR |
| 38 | 342-4801 | PAWL CAP | 84 | B55-3802 | SPACING SLEEVE B |
| 39 | F05-5601 | BALL BEARING B | 85 | F57-3901 | ROLLER CLUTCH |
| 40 | F83-6601 | WORM SHAFT | 86 | F58-2501 | BALL BEARING G |
| 41 | F95-8401 | DRIVE GEAR A | 87 | B55-3801 | DRIVE SHAFT WASHER C |
| 42 | F28-3101 | BALL BEARING C | 88 | F02-8201 | CLICK LEAF SPRING HOLDER |
| 43 | F50-5701 | DRIVE GEAR SCREW | 89 | F03-2401 | CLICK LEAF SPRING |
| 44 | F95-8501 | DRIVE GEAR B | 90 | 150-8901 | DRAG SPRING WASHER |
| 45 | F83-6401 | STABILIZER BAR | 91 | 373-7810 | SPACING SLEEVE C |
| 46 | F83-7601 | FRONT PLT | 92 | F57-6503 | STAR DRAG |
| 47 | F83-4701 | BALL BEARING COLLAR | 93 | F57-6601 | FRICTION WASHER |
| 48 | B86-1701 | BALL BEARING D | 94 | F83-7201 | HANDLE |
| 49 | F83-5001 | CLUTCH CAM | 95 | F83-7401 | HANDLE NUT |
| 50 | F83-5801 | YOKE | 96 | F57-7202 | HANDLE NUT RET |
| 51 | F58-8001 | YOKE SPRING | 98 | G04-0802 | L/S PLT SCREW B |
| 52 | F83-4901 | CLUTCH TRIP PLT HOLDER | 99 | F96-7801 | DRAG WASHER B |
| 53 | F83-4801 | CLUTCH TRIP PLT | 100 | F05-1701 | CAST CONTROL CLICK SPRING |
| 54 | F77-4603 | CLUTCH TRIP PLT WASHER | | | |