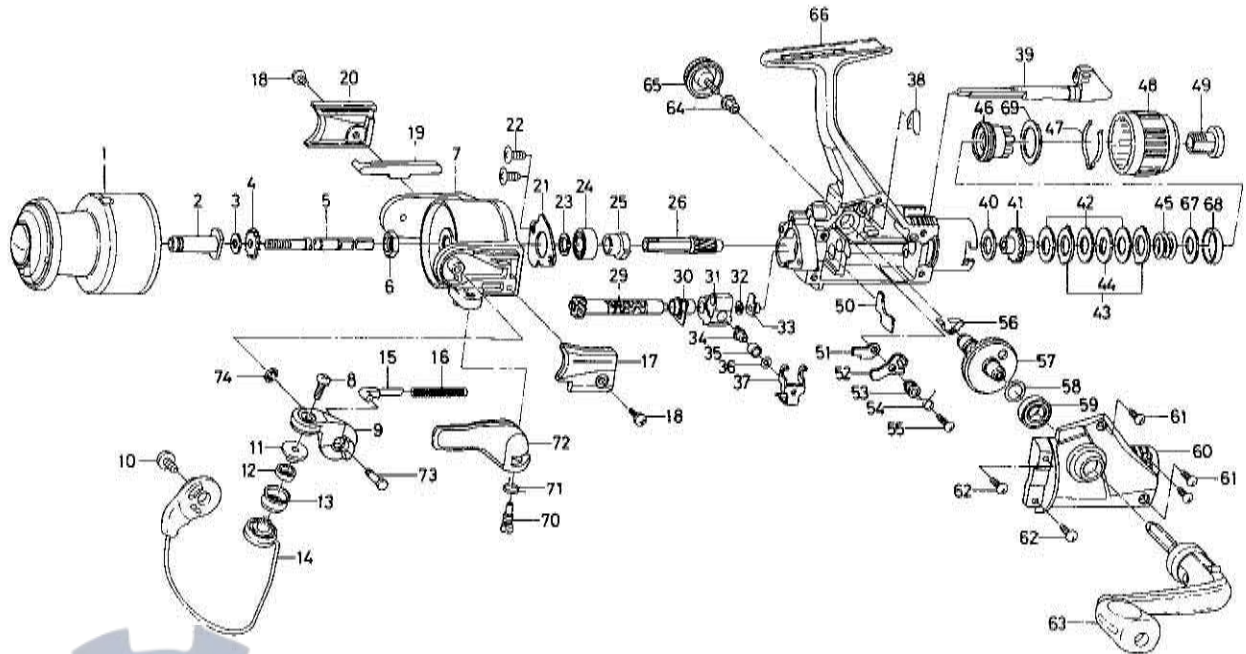


## SPINNING REEL — TD1355H



| Key No. | Part No. | Part Name                |
|---------|----------|--------------------------|
| 1       | F05-7902 | Spool assembly           |
| 2       | F05-8101 | Spool metal              |
| 3       | 374-6400 | Spool washer             |
| 4       | E13-1201 | Main shaft washer        |
| 5       | F05-7201 | Main shaft               |
| 6       | 341-9201 | Rotor nut                |
| 7       | F07-6101 | Rotor                    |
| 8       | B67-9305 | Line roller screw        |
| 9       | F06-3901 | Bail arm                 |
| 10      | E00-7102 | Bail trip cam screw      |
| 11      | F06-6301 | Line roller collar       |
| 12      | F05-5601 | Ball bearing A           |
| 13      | F05-8901 | Line roller              |
| 14      | F06-4101 | Bail assembly            |
| 15      | E36-4401 | Bail spring shaft        |
| 16      | E39-0601 | Bail spring              |
| 17      | E36-9702 | Bail spring cover        |
| 18      | E36-4201 | Bail spring cover screw  |
| 19      | E36-5001 | Bail trip lever          |
| 20      | E36-5105 | Bail trip cover          |
| 21      | F05-7101 | Bearing retainer         |
| 22      | E03-7801 | Bearing retainer screw   |
| 23      | 375-8503 | Bearing washer           |
| 24      | L03-6601 | Ball bearing B           |
| 25      | F03-7501 | Anti-reverse ratchet     |
| 26      | E36-9201 | Pinion gear              |
| 29      | F05-6501 | Worm shaft               |
| 30      | F08-7101 | Worm shaft bush          |
| 31      | F05-6401 | Oscillating slider       |
| 32      | B53-6100 | Worm shaft washer        |
| 33      | F05-6901 | Worm shaft collar        |
| 34      | E19-1202 | Oscillating pawl         |
| 35      | E19-1301 | Oscillating pawl bush    |
| 36      | 375-0800 | Oscillating pawl washer  |
| 37      | F05-7301 | Oscillating slider cover |
| 38      | E26-8701 | Anti-reverse cam spring  |

| Key No. | Part No. | Part Name                  |
|---------|----------|----------------------------|
| 39      | F05-9901 | Anti-reverse lever         |
| 40      | B48-9904 | Drag washer A              |
| 41      | F09-6501 | Click gear                 |
| 42      | B49-0202 | Drag washer B              |
| 43      | B49-0102 | Eared washer               |
| 44      | B49-0301 | Key washer                 |
| 45      | F06-2301 | Drag coil spring           |
| 46      | F05-7501 | Drag screw                 |
| 47      | F05-9701 | Drag washer spring         |
| 48      | F06-3101 | Drag knob                  |
| 49      | F05-7801 | Drag knob screw            |
| 50      | F08-7201 | Shield plate               |
| 51      | B95-9301 | Anti-reverse pawl plate    |
| 52      | E27-1301 | Anti-reverse pawl          |
| 53      | B95-9501 | Anti-reverse pawl collar   |
| 54      | B95-9602 | Anti-reverse pawl spring A |
| 55      | B00-8601 | Anti-reverse pawl screw    |
| 56      | E24-5301 | Anti-reverse pawl spring B |
| 57      | F00-5701 | Drive gear                 |
| 58      | 375-8501 | Drive gear washer          |
| 59      | 634-1301 | Ball bearing C             |
| 60      | F06-3801 | Side cover                 |
| 61      | E15-8601 | Side cover screw A         |
| 62      | E15-8602 | Side cover screw B         |
| 63      | F02-0101 | Handle assembly            |
| 64      | 501-8501 | Handle collar              |
| 65      | F03-5602 | Handle lock screw          |
| 66      | F06-3701 | Body assembly              |
| 67      | 372-7601 | Drag screw washer A        |
| 68      | F12-4401 | Drag screw collar          |
| 69      | E49-5001 | Drag screw washer B        |
| 70      | E37-0001 | Trigger screw              |
| 71      | E36-9901 | Trigger spring             |
| 72      | F06-4001 | Trigger lever              |
| 73      | E36-9601 | Bail arm screw             |
| 74      | 320-5901 | Bail arm screw retainer    |