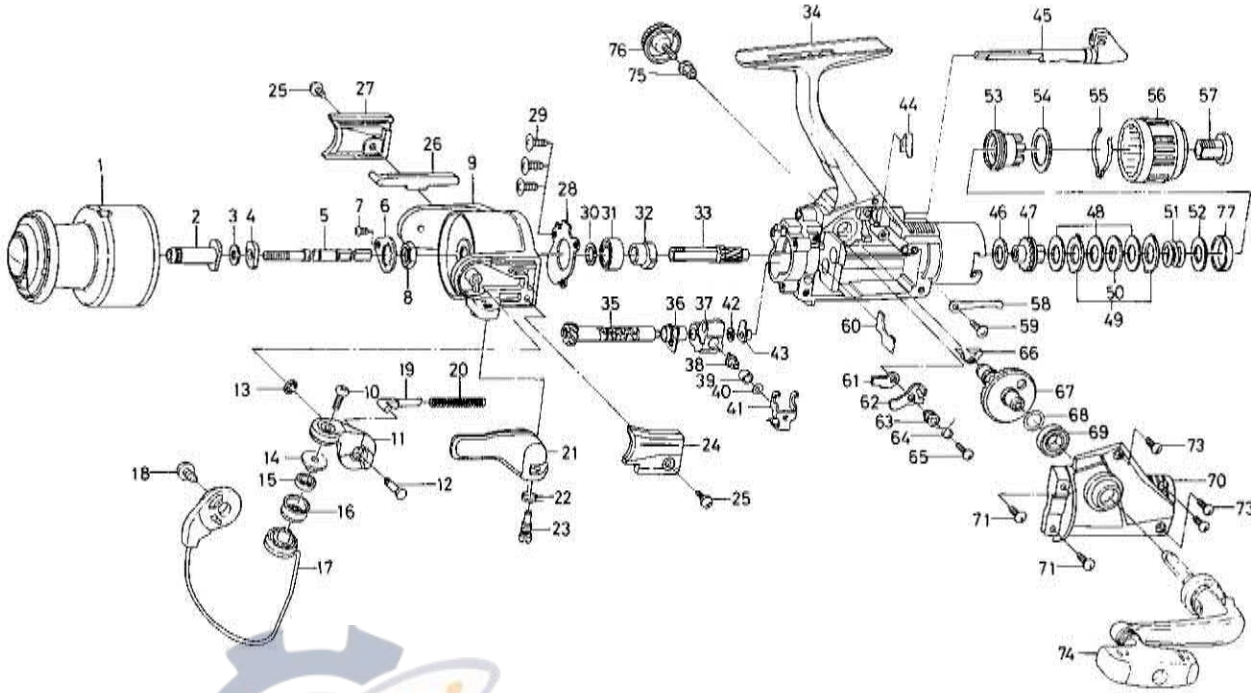


SPINNING REEL – TD1655H



Key

| Key No. | Part No. | Part Name |
|---------|----------|-------------------------------|
| 1 | F10-3802 | Spool assembly |
| 2 | E48-4001 | Spool metal |
| 3 | 375-3002 | Spool washer |
| 4 | E18-8801 | Main shaft washer |
| 5 | E48-3001 | Main shaft |
| 6 | B66-2601 | Rotor nut holding plate |
| 7 | B93-3001 | Rotor nut holding plate screw |
| 8 | B10-5701 | Rotor nut |
| 9 | F11-0401 | Rotor |
| 10 | B67-9305 | Line roller screw |
| 11 | F06-3901 | Bail arm |
| 12 | E36-9601 | Bail arm screw |
| 13 | 320-5901 | Bail arm screw retainer |
| 14 | F06-6301 | Line roller collar |
| 15 | F05-5601 | Ball bearing A |
| 16 | F05-8901 | Line roller |
| 17 | F10-8701 | Bail assembly |
| 18 | E00-7102 | Bail trip cam screw |
| 19 | E36-4401 | Bail spring shaft |
| 20 | E51-4401 | Bail spring |
| 21 | F06-4001 | Trigger lever |
| 22 | E36-9901 | Trigger spring |
| 23 | E37-0001 | Trigger screw |
| 24 | F01-1702 | Bail spring cover |
| 25 | E36-4201 | Bail spring cover screw |
| 26 | F01-1601 | Bail trip lever |
| 27 | E37-8206 | Bail trip cover |
| 28 | E48-2901 | Bearing retainer |
| 29 | E03-7801 | Bearing retainer screw |
| 30 | 371-2827 | Bearing washer |
| 31 | B54-6001 | Ball bearing B |
| 32 | E40-1001 | Anti-reverse ratchet |
| 33 | E49-1701 | Pinion gear |
| 34 | F10-8501 | Body assembly |
| 35 | F11-0301 | Worm shaft |
| 36 | E48-2701 | Worm shaft bush |
| 37 | F10-5101 | Oscillating slider |
| 38 | E19-1202 | Oscillating pawl |

Key

| Key No. | Part No. | Part Name |
|---------|----------|----------------------------|
| 39 | E19-1301 | Oscillating pawl bush |
| 40 | 375-0800 | Oscillating pawl washer |
| 41 | F10-5201 | Oscillating slider cover |
| 42 | B53-6100 | Worm shaft washer |
| 43 | F05-6901 | Worm shaft collar |
| 44 | E26-8701 | Anti-reverse cam spring |
| 45 | F05-9904 | Anti-reverse lever |
| 46 | B46-9505 | Drag washer A |
| 47 | E48-3201 | Click gear |
| 48 | E14-3301 | Drag washer B |
| 49 | B83-9501 | Eared washer |
| 50 | E02-4401 | Key washer |
| 51 | B98-2901 | Drag coil spring |
| 52 | B27-0703 | Drag screw washer A |
| 53 | E48-3301 | Drag screw |
| 54 | F12-0601 | Drag screw washer B |
| 55 | F13-6701 | Drag washer spring |
| 56 | F10-3701 | Drag knob |
| 57 | F05-7801 | Drag knob screw |
| 58 | E48-3101 | Click leaf spring |
| 59 | E36-4202 | Click leaf spring screw |
| 60 | E48-2801 | Shield plate |
| 61 | B96-5301 | Anti-reverse pawl plate |
| 62 | E27-7002 | Anti-reverse pawl |
| 63 | B96-5501 | Anti-reverse pawl collar |
| 64 | B96-5601 | Anti-reverse pawl spring A |
| 65 | B00-9701 | Anti-reverse pawl screw |
| 66 | E37-7201 | Anti-reverse pawl spring B |
| 67 | E37-7101 | Drive gear |
| 68 | 373-7803 | Drive gear washer |
| 69 | 631-6901 | Ball bearing C |
| 70 | F10-8601 | Side cover |
| 71 | E15-8602 | Side cover screw A |
| 73 | E15-8601 | Side cover screw B |
| 74 | E38-7101 | Handle assembly |
| 75 | E12-7501 | Handle collar |
| 76 | F03-5602 | Handle lock screw |
| 77 | F15-6501 | Drag screw collar |