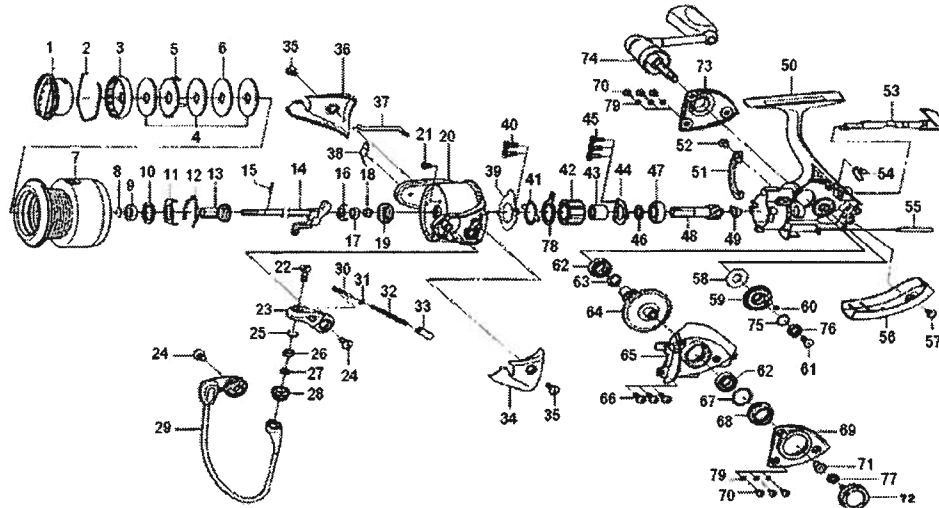


SPINNING REEL TD SOL 2000



Key No.	Parts No.	Parts Name	Key No.	Parts No.	Parts Name
1	G69-4901	DRAG KNOB	40	G55-7101	BEARING RET A SCREW
2	F74-2501	DRAG WASHER RET	41	G46-5401	CLUTCH CAM RET
3	F90-8701	DRAG KNOB CLICK PLT	42	G22-0601	ROLLER CLUTCH
4	F63-5001	DRAG WASHER	43	G61-1101	SPACING SLEEVE
5	F63-5201	EARED WASHER	44	G46-7402	BEARING RET B
6	F63-5101	KEY WASHER	45	G55-7101	BEARING RET B SCREW
2-7	G69-5101	SPOOL	46	375-8509	BEARING WASHER A
8	G47-2401	SPOOL RET	47	G53-5101	BALL BEARING C
9	G09-5801	SPOOL COLLAR	48	G69-3001	PINION GEAR
10	F62-5501	SPOOL WASHER	49	G61-0901	PINION GEAR COLLAR
11	G69-3901	CLICK LEAF SPRING HOLDER	50	G69-4501	BODY
12	F70-4901	SPOOL CLICK LEAF SPRING	51	G61-1801	BRAKE SHOE
13	G62-7901	SPOOL METAL	52	G40-0101	BRAKE SHOE SCREW
14	G69-4601	MAIN SHAFT	53	G60-9905	A/R LEVER
15	G37-5001	PIN	54	G62-7801	A/R CAM SPRING
16	G47-1501	MAIN SHAFT PLT	55	G62-9901	STABILIZER BAR
17	G46-6201	BALL BEARING A	56	G63-0402	REAR COVER
18	G61-3501	BALL BEARING COLLAR	57	351-1801	REAR COVER SCREW
19	G47-1301	ROTOR NUT	58	G61-0103	DRIVE GEAR WASHER
20	G49-3504	ROTOR	59	G62-9501	OSC GEAR
21	E49-2001	ROTOR NUT LOCK SCREW	60	G46-6001	O RING B
22	F92-1702	LINE ROLLER SCREW	61	G46-6301	OSC GEAR SCREW
23	F89-2235	BAIL ARM	62	G46-7302	BALL BEARING D
24	351-7701	BAIL ARM SCREW	63	G67-0501	O RING C
25	G47-1101	O RING A	64	G61-1301	DRIVE GEAR
26	G28-1601	BALL BEARING B	65	G63-0202	SIDE COVER
27	F89-7101	LINE ROLLER WASHER	66	G46-8301	SIDE COVER SCREW
28	G47-0901	LINE ROLLER	67	G61-3400	BEARING WASHER B
29	G49-3701	BAIL	68	G61-2401	BEARING HOLDER SCREW
30	G47-1801	BAIL SPRING SHAFT	69	G63-0302	SIDE COVER PLT A
31	E31-3901	BAIL SPRING WASHER	70	G61-1501	SIDE COVER PLT SCREW
32	E31-3901	BAIL SPRING WASHER	71	F72-1001	HANDLE COLLAR
33	G56-4201	BAIL SPRING	72	G61-4301	HANDLE SCREW
34	G47-1601	BAIL SPRING HOLDER	73	G63-0102	SIDE COVER PLT B
35	G49-3601	BAIL SPRING COVER	74	G69-5001	HANDLE
36	G33-2702	BAIL SPRING COVER SCREW	75	G46-6100	OSC GEAR WASHER
37	G49-4001	BAIL HOLDER COVER	76	G46-6202	BALL BEARING E
38	G49-3901	BAIL TRIP LEVER	77	160-8101	LOCK WASHER
39	G58-5501	BAIL TRIP LEVER SPRING	78	F89-6801	CLUTCH CAM
	G61-1201	BEARING RET A	79	G31-5301	O RING D