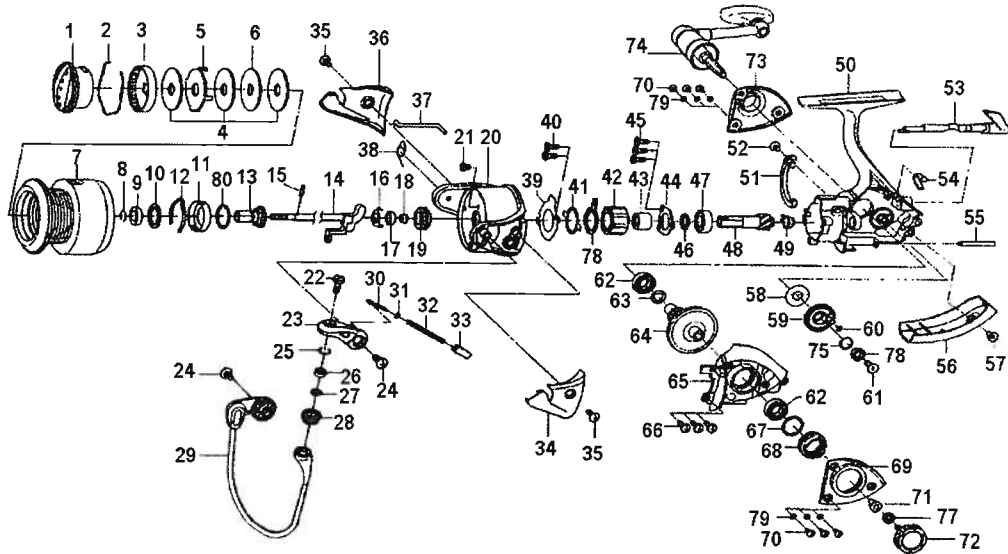


SPINNING REEL TD SOL 3000



| Key No. | Parts No. | Parts Name | Key No. | Parts No. | Parts Name |
|---------|-----------|--------------------------|---------|-----------|----------------------|
| 1 | G69-6001 | DRAG KNOB | 41 | G46-5401 | CLUTCH CAM RET |
| 2 | F71-0001 | DRAG WASHER RET | 42 | G22-0601 | ROLLER CLUTCH |
| 3 | F89-5304 | DRAG KNOB CLICK PLT | 43 | G46-7501 | SPACING SLEEVE |
| 4 | F69-1001 | DRAG WASHER | 44 | G46-7402 | BEARING RET B |
| 5 | F62-7301 | EARED WASHER | 45 | G55-7101 | BEARING RET B SCREW |
| 6 | F62-7201 | KEY WASHER | 46 | 375-8509 | BEARING WASHER A |
| 2-7 | G77-3301 | SPOOL | 47 | G53-5101 | BALL BEARING C |
| 8 | G47-2401 | SPOOL RET | 48 | G69-3001 | PINION GEAR |
| 9 | G09-5801 | SPOOL COLLAR | 49 | G61-0901 | PINION GEAR COLLAR |
| 10 | F62-5501 | SPOOL WASHER | 50 | G69-5301 | BODY |
| 11 | G47-2201 | CLICK LEAF SPRING HOLDER | 51 | G61-1801 | BRAKE SHOE |
| 12 | F70-4901 | SPOOL CLICK LEAF SPRING | 52 | F50-5701 | BRAKE SHOE SCREW |
| 13 | G62-8801 | SPOOL METAL | 53 | G60-9905 | A/R LEVER |
| 14 | G77-3101 | MAIN SHAFT | 54 | G62-7801 | A/R CAM SPRING |
| 15 | G37-5001 | PIN | 55 | G61-0801 | STABILIZER BAR |
| 16 | G47-1501 | MAIN SHAFT PLT | 56 | G61-1902 | REAR COVER |
| 17 | G46-6201 | BALL BEARING A | 57 | 352-2501 | REAR COVER SCREW |
| 18 | G61-3501 | BALL BEARING COLLAR | 58 | G61-0101 | DRIVE GEAR WASHER |
| 19 | G47-1301 | ROTOR NUT | 59 | G63-2101 | OSC GEAR |
| 20 | G50-8305 | ROTOR | 60 | G46-6001 | O RING B |
| 21 | E49-2001 | ROTOR NUT LOCK SCREW | 61 | G46-6301 | OSC GEAR SCREW |
| 22 | F92-1702 | LINE ROLLER SCREW | 62 | G46-7302 | BALL BEARING D |
| 23 | F89-2235 | BAIL ARM | 63 | G67-0501 | O RING C |
| 24 | 351-7701 | BAIL ARM SCREW | 64 | G61-1301 | DRIVE GEAR |
| 25 | G47-1101 | O RING A | 65 | G61-1602 | SIDE COVER |
| 26 | G28-1601 | BALL BEARING B | 66 | G46-8301 | SIDE COVER SCREW |
| 27 | F89-7101 | LINE ROLLER WASHER | 67 | G61-3400 | BEARING WASHER B |
| 28 | G47-0901 | LINE ROLLER | 68 | G61-2401 | BEARING HOLDER SCREW |
| 29 | G50-8501 | BAIL | 69 | G61-1702 | SIDE COVER PLT A |
| 30 | G47-1801 | BAIL SPRING SHAFT | 70 | G61-1501 | SIDE COVER PLT SCREW |
| 31 | E31-3901 | BAIL SPRING WASHER | 71 | F72-1001 | HANDLE COLLAR |
| 32 | G47-1701 | BAIL SPRING | 72 | G61-4301 | HANDLE SCREW |
| 33 | G47-1601 | BAIL SPRING HOLDER | 73 | G61-1402 | SIDE COVER PLT B |
| 34 | G50-8401 | BAIL SPRING COVER | 74 | G69-5701 | HANDLE |
| 35 | G33-2702 | BAIL SPRING COVER SCREW | 75 | G46-6100 | OSC GEAR WASHER |
| 36 | G50-8801 | BAIL HOLDER COVER | 76 | G46-6202 | BALL BEARING E |
| 37 | G50-8701 | BAIL TRIP LEVER | 77 | 160-8101 | LOCK WASHER |
| 38 | G58-5501 | BAIL TRIP LEVER SPRING | 78 | F89-6801 | CLUTCH CAM |
| 39 | G61-1201 | BEARING RET A | 79 | G31-5301 | O RING D |
| 40 | G55-7101 | BEARING RET A SCREW | 80 | G46-8000 | SPOOL METAL WASHER |