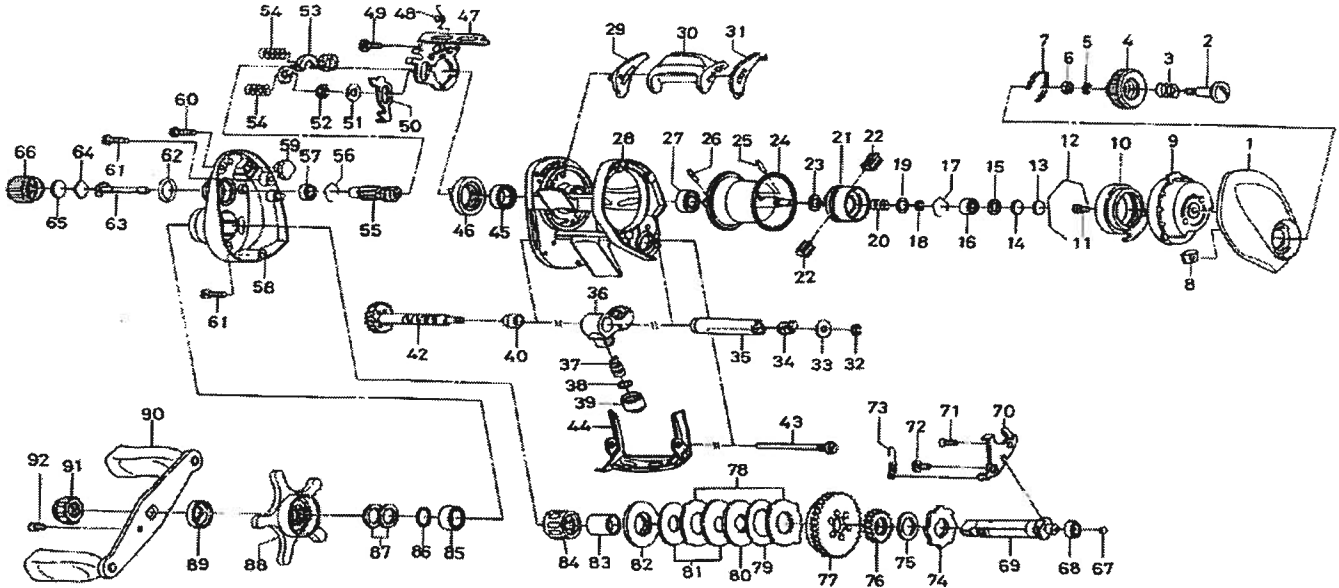


**BAITCASTING REEL**

**TEAM DAIWA SOL Left**



Key No.	Parts No.	Parts Name	Key No.	Parts No.	Parts Name
1	G51-8305	R/S PLT	52	320-5901	CLUTCH TRIP PLT RET
2	F57-7901	SET PLT SCREW	53	G51-7801	YOKE
3	E16-7101	SET PLT SPRING	54	G35-8001	YOKE SPRING
4	G36-0502	BRAKE ADJ KNOB	55	G49-9002	PINION GEAR
5	B33-9801	BRAKE DIAL RET A	56	E21-9701	BEARING RET B
6	F63-7701	BRAKE DIAL WASHER	57	F05-5601	BALL BEARING C
7	F05-1701	BRAKE CLICK SPRING	58	G58-1902	L/S PLT
8	F61-3401	BRAKE DIAL RET B	59	G26-2301	CLUTCH CAM PLT
9	G51-8502	RIGHT SET PLT	60	G04-0805	L/S PLT SCREW A
10	F71-7702	MAGNET HOLDER	61	G04-0806	L/S PLT SCREW B
11	351-0906	RIGHT SET PLT SCREW	62	171-5201	O RING
12	B54-3201	MAGNET HOLDER RET RING	63	G01-5501	PINION SHAFT
13	375-7404	SPACER A	64	B17-5401	SPACER D
14	375-7411	SPACER B	65	B17-5503	SPACER E
15	F57-4303	SPACER C	66	F57-4408	CAST CONTROL CAP
16	G49-8601	BALL BEARING A	67	F64-7201	DRIVE SHAFT WASHER A
17	E21-9701	BEARING RET A	68	F05-5601	BALL BEARING D
18-27	Z01-3504	SPOOL	69	G58-2602	DRIVE SHAFT
28	G58-2002	FRAME	70	G51-7601	DRIVE SHAFT RET
29	G35-7002	CLUTCH LEVER PLT A	71	E13-4503	DRIVE SHAFT RET SCREW A
30	G35-7202	CLUTCH LEVER	72	G02-1201	DRIVE SHAFT RET SCREW B
31	G35-6902	CLUTCH LEVER PLT B	73	G01-0201	CLUTCH TRIP PLT SPRING
32	320-5901	WORM SHAFT RET	74	F76-1701	A/R RATCHET
33	F65-5501	WORM SHAFT WASHER	75	E48-9502	DRIVE SHAFT WASHER B
34	B71-5601	WORM SHAFT HOLDER A	76	G01-1201	WORM SHAFT GEAR
35	F83-6501	LEVEL WIND GUARD	77	G51-8002	DRIVE GEAR
36	G56-4902	LINE GUIDE	78	F79-6101	EARED WASHER
37	121-4212	LINE GUIDE PAWL	79	G42-8501	DRAG WASHER A
38	373-1300	LINE GUIDE PAWL WASHER	80	F79-6301	KEY WASHER A
39	F40-2803	PAWL CAP	81	G45-5801	DRAG WASHER B
40	G41-7801	WORM SHAFT HOLDER B	82	B36-0303	KEY WASHER B
42	G56-5101	WORM SHAFT	83	G01-1401	GEAR SHAFT COLLAR
43	G35-8701	STABILIZER BAR	84	F99-9803	ROLLER CLUTCH
44	G58-2202	FRONT PLT	85	B86-1702	BALL BEARING E
45	B86-1702	BALL BEARING B	86	B55-3801	BEARING WASHER
46	G51-7301	CLUTCH CAM	87	150-8901	SPRING WASHER
47	G51-7401	YOKE PLT	88	G36-3602	STAR DRAG
48	G51-7701	CLUTCH CAM SPRING	89	F85-0401	SPACING SLEEVE
49	G00-9701	CLUTCH CAM SCREW	90	G58-2701	HANDLE
50	G51-7501	CLUTCH TRIP PLT	91	G36-0302	HANDLE NUT
51	F77-4603	CLUTCH TRIP PLT WASHER	92	G36-0401	HANDLE NUT SCREW