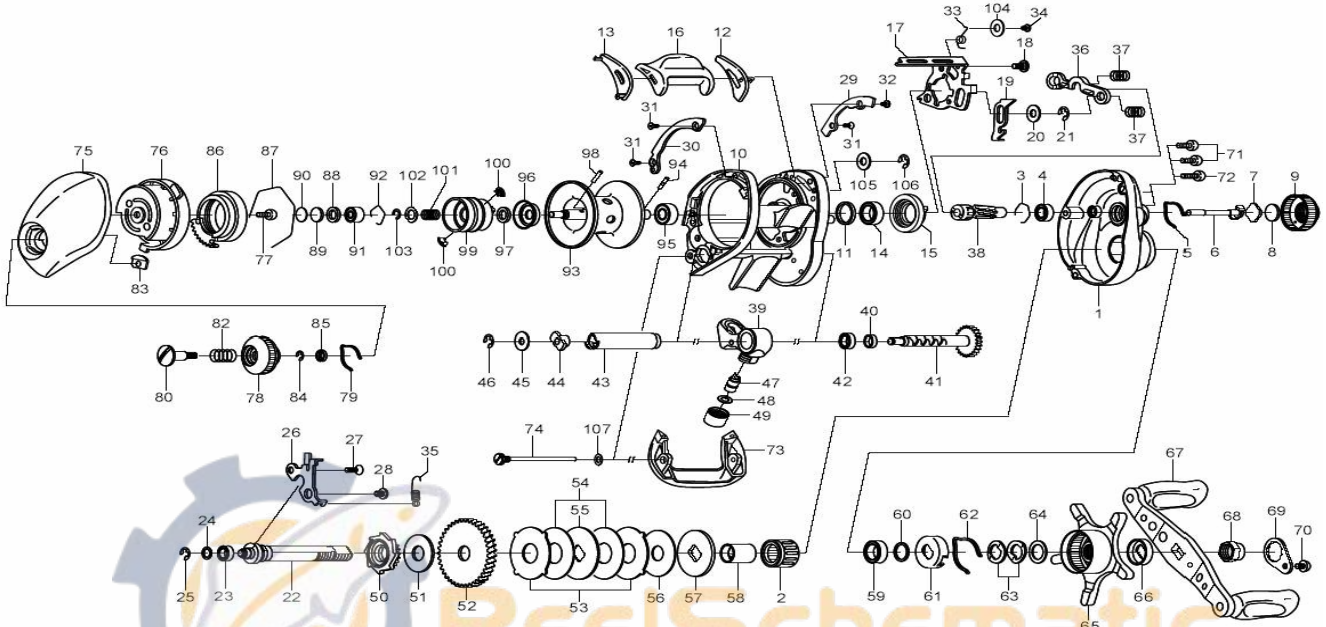


Please order by parts number, not key number
 Veuillez indiquer le numéro de la pièce.



TEAM DAIWA ZILLION 100PA



Key No.	Parts No.	Parts Name	Key No.	Parts No.	Parts Name
1	H20-7901	Right side plate	49	342-4807	Pawl cap
2	G81-9801	Roller clutch	50	G79-0901	Clutch wheel
3	B42-1601	Bearing retainer (A)	51	G86-3501	Drive shaft washer
4	G53-8001	Ball bearing (A)	52	G95-7601	Drive gear
5	G89-4401	Click leaf spring (A)	53	G79-1301	Eared washer
6	F74-4101	Pinion shaft	54	G79-1401	Drag washer (A)
7	B17-5401	Spacer (A)	55	F90-4902	Key washer (A)
8	B17-5503	Spacer (B)	56	G71-1101	Drag washer (B)
9	F83-3907	Cast control cap	57	G35-8501	Key washer (B)
10	H20-8001	Frame assembly	58	G01-1401	Gear shaft collar
11	F83-4701	Collar	59	B86-1703	Ball bearing (D)
12	G00-9302	Spacer (C)	60	B55-3801	Bearing washer
13	G00-9402	Spacer (D)	61	F02-8201	Click leaf spring holder
14	G43-1002	Ball bearing (B)	62	F03-2401	Click leaf spring (B)
15	F79-3501	Clutch cam	63	150-8901	Drag spring washer
16	G00-9501	Clutch lever	64	373-7810	Spacing sleeve
17	G79-0001	Clutch cam plate	65	G79-2501	Star drag
18	G00-9701	Clutch cam screw	66	F85-0402	Handle collar
19	G79-0101	Clutch trip plate	67	G88-4501	Handle assembly
20	371-6900	Washer (A)	68	G79-3301	Handle nut
21	320-1402	Retainer (A)	69	040-3209	Handle nut plate
22	G79-0201	Drive shaft	70	353-8301	Handle nut plate screw
23	F05-5601	Ball bearing (C)	71	G04-0805	Right side plate screw (A)
24	G75-5200	Washer (B)	72	G04-0801	Right side plate screw (B)
25	320-5901	Retainer (B)	73	G01-1601	Front plate
26	G79-0301	Drive shaft retainer	74	G01-1702	Stabilizer bar
27	E13-4503	Drive shaft retainer screw (A)	75	G03-6814	Left side plate
28	G85-0401	Drive shaft retainer screw (B)	76	G01-1902	Left set plate
29	G79-4107	Plate (A)	77	351-0906	Left set plate screw
30	G79-5707	Plate (B)	78	F57-7802	Brake adjusting knob
31	G31-8503	Screw (A)	79	F05-1701	Brake click spring
32	G61-1501	Screw (B)	80	F57-7901	Set plate screw
33	G79-0401	Clutch cam spring	82	E16-7101	Set plate spring
34	F50-5701	Screw (C)	83	F61-3401	Brake dial retainer (A)
35	G79-0501	Clutch trip plate spring	84	B33-9801	Brake dial retainer (B)
36	F79-4802	Yoke	85	F63-7701	Brake dial washer
37	G85-0301	Yoke spring	86	F71-7702	Magnet holder
38	H20-8201	Pinion gear	87	B54-3201	Magnet holder retainer
39	G41-0301	Line guide	88	F57-4303	Spacer (E)
40	G01-0701	Worm shaft holder (A)	89	375-7411	Spacer (F)
41	G79-0701	Worm shaft assembly	90	375-7400	Spacer (G)
42	F64-8301	Worm shaft holder (B)	91	G43-1101	Ball bearing (E)
43	F83-6502	Level wind guard	92	E21-9701	Bearing retainer (B)
44	B71-5601	Worm shaft holder (C)	93-103	Z01-8301	Spool assembly
45	F65-5500	Worm shaft washer	104	F44-0201	Washer (D)
46	320-5901	Worm shaft retainer	105	G85-0701	Washer (E)
47	121-4212	Line guide pawl	106	320-5901	Retainer (C)
48	373-1300	Line guide washer	107	G68-4801	Washer (F)