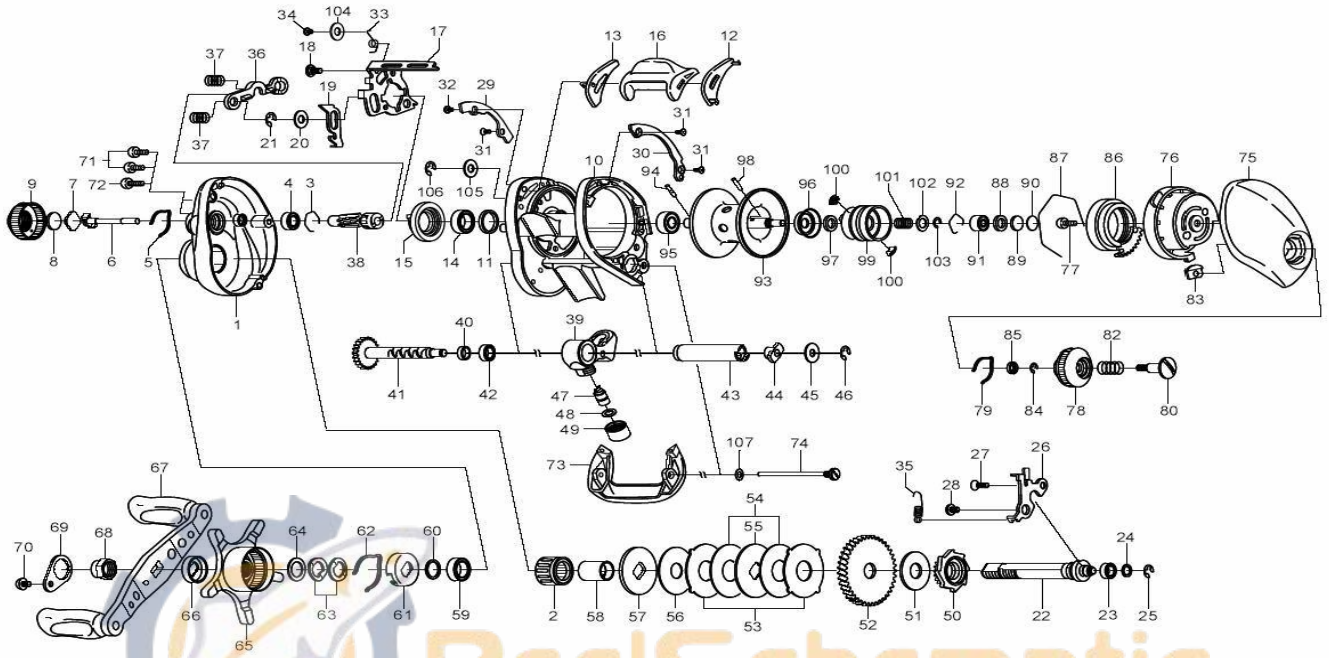


Please order by parts number, not key number  
Veuillez indiquer le numéro de la pièce.



# TEAM DAIWA ZILLION 100PLA



Key No.	Parts No.	Parts Name	Key No.	Parts No.	Parts Name
1	H20-8301	Left side plate	49	342-4807	Pawl cap
2	G81-9801	Roller clutch	50	G80-2201	Clutch wheel
3	B42-1601	Bearing retainer (A)	51	G86-3501	Drive shaft washer
4	G53-8001	Ball bearing (A)	52	G96-4501	Drive gear
5	G89-4401	Click leaf spring (A)	53	G79-1301	Eared washer
6	F74-4101	Pinion shaft	54	G79-1401	Drag washer (A)
7	B17-5401	Spacer (A)	55	F90-4902	Key washer (A)
8	B17-5503	Spacer (B)	56	G71-1101	Drag washer (B)
9	F83-3907	Cast control cap	57	G35-8501	Key washer (B)
10	H20-8401	Frame assembly	58	G01-1401	Gear shaft collar
11	F83-4701	Collar	59	B86-1703	Ball bearing (D)
12	G26-0702	Spacer (C)	60	B55-3801	Bearing washer
13	G26-0802	Spacer (D)	61	F02-8201	Click leaf spring holder
14	G43-1002	Ball bearing (B)	62	F03-2401	Click leaf spring (B)
15	F99-7401	Clutch cam	63	150-8901	Drag spring washer
16	G26-0901	Clutch lever	64	373-7810	Spacing sleeve
17	G80-1701	Clutch cam plate	65	G79-2502	Star drag
18	G00-9701	Clutch cam screw	66	F85-0402	Handle collar
19	G80-1801	Clutch trip plate	67	G88-4501	Handle assembly
20	371-6900	Washer (A)	68	G79-3302	Handle nut
21	320-1402	Retainer (A)	69	040-3209	Handle nut plate
22	G79-0202	Drive shaft	70	353-8301	Handle nut plate screw
23	F05-5601	Ball bearing (C)	71	G04-0805	Left side plate screw (A)
24	G75-5200	Washer (B)	72	G04-0801	Left side plate screw (B)
25	320-5901	Retainer (B)	73	G26-1501	Front plate
26	G80-1901	Drive shaft retainer	74	G01-1702	Stabilizer bar
27	E13-1503	Drive shaft retainer screw (A)	75	G26-1608	Right side plate
28	G85-0401	Drive shaft retainer screw (B)	76	G26-1802	Right set plate
29	G79-4108	Plate (A)	77	351-0906	Right set plate screw
30	G79-5708	Plate (B)	78	F57-7802	Brake adjusting knob
31	G31-8503	Screw (A)	79	F05-1701	Brake click spring
32	G61-1501	Screw (B)	80	F57-7901	Set plate screw
33	G80-2001	Clutch cam spring	82	E16-7101	Set plate spring
34	F50-5701	Screw (C)	83	F61-3401	Brake dial retainer (A)
35	G79-0501	Clutch trip plate spring	84	B33-9801	Brake dial retainer (B)
36	F99-8202	Yoke	85	F63-7701	Brake dial washer
37	G85-0301	Yoke spring	86	F71-7702	Magnet holder
38	H20-8601	Pinion gear	87	B54-3201	Magnet holder retainer
39	G41-0301	Line guide	88	F57-4303	Spacer (E)
40	G01-0701	Worm shaft holder (A)	89	375-7411	Spacer (F)
41	G79-0701	Worm shaft assembly	90	375-7400	Spacer (G)
42	F64-8301	Worm shaft holder (B)	91	G43-1101	Ball bearing (E)
43	F83-6502	Level wind guard	92	E21-9701	Bearing retainer (B)
44	B71-5601	Worm shaft holder (C)	93-103	Z01-8302	Spool assembly
45	F65-5500	Worm shaft washer	104	F44-0201	Washer (D)
46	320-5901	Worm shaft retainer	105	G85-0701	Washer (E)
47	121-4212	Line guide pawl	106	320-5901	Retainer (C)
48	373-1300	Line guide washer	107	G68-4801	Washer (F)