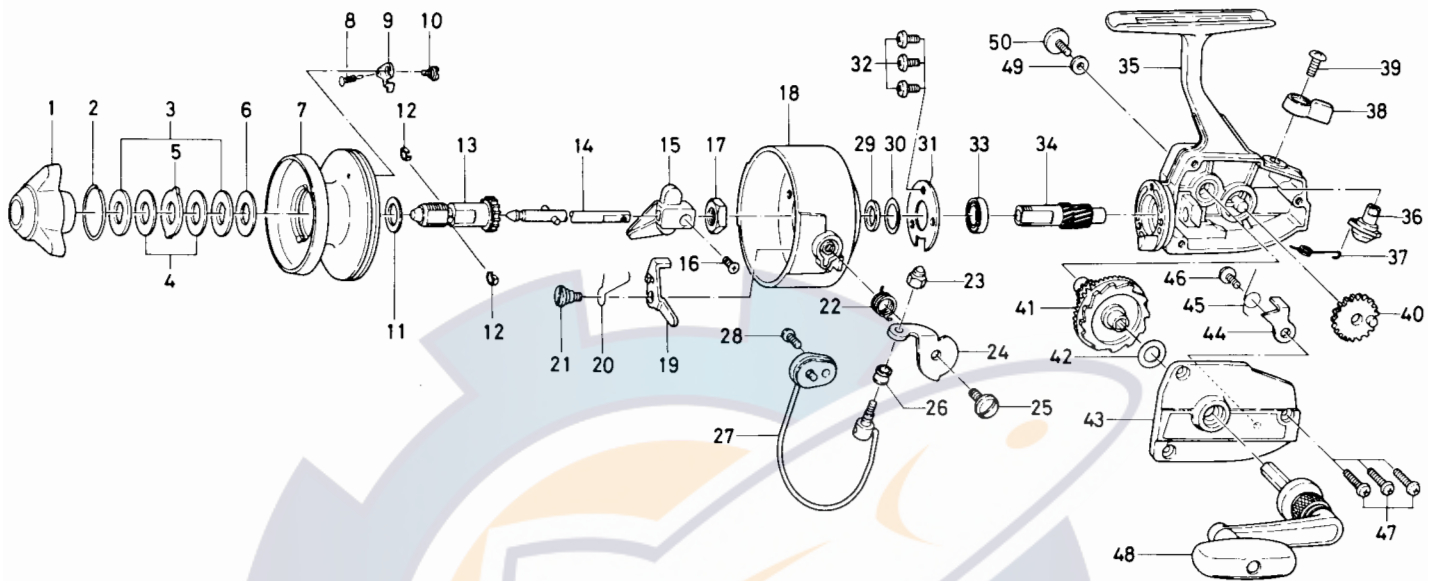




SPINNING REEL 8350HRL



Key No. 1 ~ 13
6-733-7601 Spool assembly \$4.80

Key No.	Parts No.	Parts Name	Price Per Piece	Key No.	Parts No.	Parts Name	Price Per Piece
1	6-740-4201	Drag knob	\$2.10	26	6-250-1921	Line roller	S .35
2	6-171-7701	Drag washer retainer	.15	27	6-725-3331	Bail	1.95
3	6-374-4802	Drag washer A	.15	28	6-351-6401	Bail holder screw	.15
4	6-373-3701	Drag washer B	.15	29	6-373-7804	Pinion washer A	.15
5	6-373-3603	Drag washer C	.20	30	6-372-7600	Pinion washer B	.15
6	6-373-3704	Drag washer D	.15	31	6-633-5521	Ball bearing ret. washer	.25
7	6-514-3401	Spool	See Assy.	32	6-350-1931	Ball bearing ret. washer screw	.15
8	6-144-9201	Spool click claw spring	.20	33	6-631-6901	Ball bearing	3.10
9	6-030-5311	Spool click claw	.40	34	6-403-2101	Pinion gear	1.75
10	6-363-4501	Spool click claw screw	.15	35	6-701-3904	Body	4.95
11	6-375-5701	Spool washer	.15	36	6-460-6821	Anti-reverse cam	.20
12	6-151-7211	Spool metal leaf spring	.20	37	6-142-2801	Anti-reverse cam spring	.15
13	6-720-1721	Spool metal	1.95	38	6-541-3132	Anti-reverse lever	.25
14	6-711-4501	Main shaft	1.10	39	6-351-4701	Anti-reverse lever screw	.15
15	6-481-1501	Oscillating slider	.40	40	6-413-4501	Oscillating gear	.40
16	6-351-5311	Oscillating slider screw	.15	41	6-414-1201	Drive gear	2.70
17	6-340-6602	Rotor nut	.20	42	6-370-5150	Drive gear washer	.15
18	6-202-1401	Rotor	3.05	43	6-760-9603	Body cover	2.00
19	6-571-0001	Bail kick lever	.75	44	6-111-3411	Anti-reverse claw	.25
20	6-143-4801	Bail kick lever spring	.15	45	6-143-9681	Anti-reverse claw spring	.15
21	6-361-8202	Bail kick lever screw	.25	46	6-351-7701	Anti-reverse claw screw	.15
22	6-141-0651	Bail spring	.15	47	6-351-6401	Body cover screw	.15
23	6-341-2701	Bail nut	.35	48	6-746-1331	Handle	3.65
24	6-231-0431	Arm lever	.55	49	6-372-4601	Handle washer	.15
25	6-361-8532	Arm lever screw	.60	50	6-351-5531	Handle screw	.35