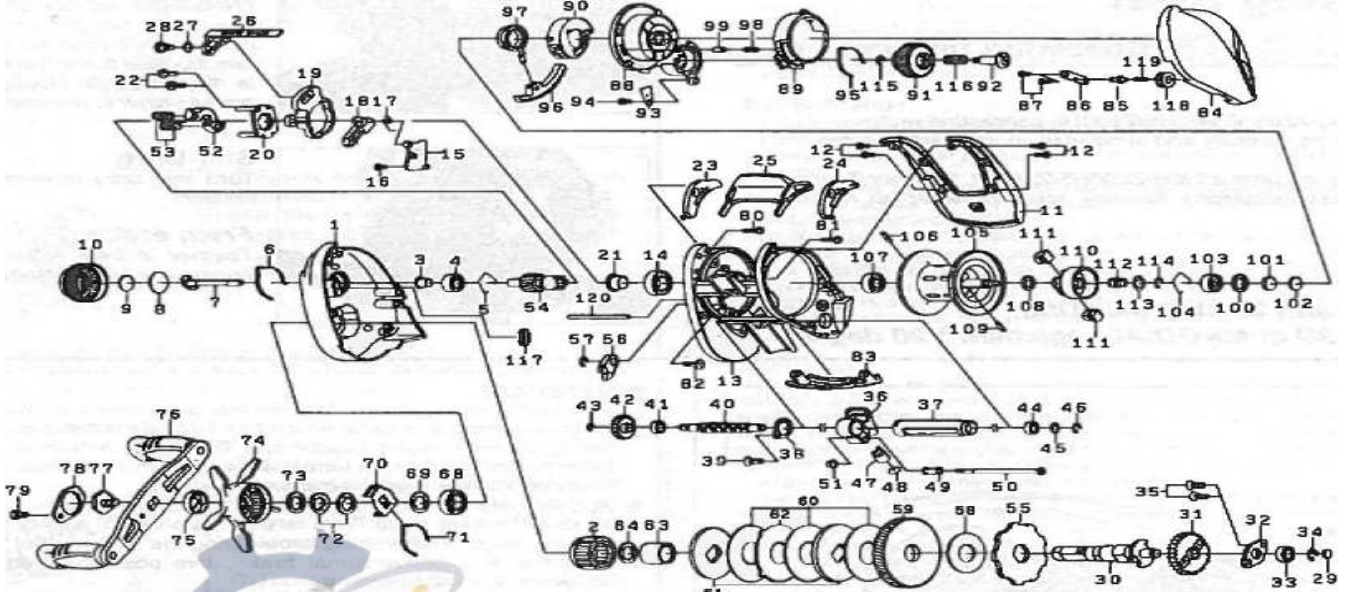


Please order by parts number, not key number  
 Veuillez indiquer le numéro de la pièce (Non "Key" No.)



# BAITCASTING REEL

# Z200HL



Key No.	Parts No.	Parts Name	Key No.	Parts No.	Parts Name
1	H69-5301	Left side plate	55	H31-2501	Clutch Wheel
2	F55-2703	Roller clutch	56	H70-8401	Stopper
3	H15-9501	Ball bearing collar (A)	57	B33-9801	Retainer (A)
4	F81-1804	Ball bearing (A)	58	H35-9401	Drive shaft washer
5	H16-0801	Bearing retainer (A)	59	H69-5501	Drive gear
6	H16-0901	Click leaf spring (A)	60	H22-7101	Drag washer
7	H15-9601	Pinion shaft	61	H35-9301	Key washer (A)
8	H16-1001	Spacer (A)	62	H22-7301	Eared washer
9	B17-5503	Spacer (B)	63	H15-7201	Gear shaft collar
10	H28-1203	Cast control cap	64	373-7816	Bearing washer (A)
11	H28-1302	Cover	68	G52-3403	Ball bearing (D)
12	G55-7101	Cover screw	69	373-7810	Bearing washer (B)
13	H69-5401	Frame assembly	70	H15-8801	Click leaf spring holder
14	G52-3403	Ball bearing (B)	71	H15-8701	Click leaf spring (B)
15	H55-4501	Clutch plate	72	150-8901	Drag spring washer
16	H29-4101	Screw (A)	73	G69-4201	Washer (C)
17	I155-4601	Clutch cam spring	74	I169-4102	Star drag
18	H55-4701	Clutch trip lever	75	H32-6801	Handle collar
19	H55-4801	Clutch cam	76	H69-4001	Handle assembly
20	H28-2001	Clutch cam plate (A)	77	H16-6801	Handle screw (A)
21	H26-6601	Ball bearing collar (B)	78	H28-3603	Handle screw plate
22	B03-2904	Clutch cam screw	79	H25-7001	Handle screw (B)
23	H28-2101	Spacer (C)	80	G04-0801	Screw (D)
24	H28-2201	Spacer (E)	81	G04-0802	Screw (E)
25	H28-2301	Clutch lever	82	E13-4516	Screw (F)
26	H55-4901	Clutch cam plate (B)	83	H28-3703	Front plate
27	H15-0201	Washer (A)	84	H69-5601	Right side plate
28	H15-9301	Screw (B)	85	H48-5102	Screw (G)
29	G09-9800	Washer (B)	86	H28-4201	Right side plate retainer
30	H69-3702	Drive shaft	87	G17-1402	Screw (H)
31	H27-5001	Drive shaft gear	88	H55-5701	Right set plate (A)
32	H15-6501	Plate	89	H55-5801	Brake adjusting knob (A)
33	G53-8003	Ball bearing (C)	90	H69-4301	Right set plate (B)
34	320-8002	Retainer	91	H28-1703	Brake adjusting knob (B)
35	E13-4509	Screw (J)	92	H28-4801	Set plate screw
36	H28-2601	Line guide	93	H28-4901	Set plate retainer
37	H28-2901	Level wind guard	94	E49-2003	Screw (I)
38	H28-9101	Worm shaft plate	95	H28-5001	Brake click spring
39	H29-4101	Screw (C)	96	H55-5901	Magnet holder
40	H69-3901	Worm shaft	97	H69-4401	Magnet holder gear
41	G72-0001	Worm shaft bearing (A)	98	H28-5501	Brake adjusting knob spring
42	H27-5101	Worm shaft gear	99	H28-5601	Brake adjusting knob pawl
43	B33-9801	Worm shaft retainer (A)	100	G18-5101	Spacer (D)
44	G72-0001	Worm shaft bearing (B)	101	375-7411	Spacer (F)
45	B41-1700	Worm shaft washer	102	375-7400	Spacer (G)
46	320-5901	Worm shaft retainer (B)	103	G51-1506	Ball bearing (E)
47	H10-8601	Line guide pawl	104	H44-8401	Bearing retainer (B)
48	G09-9800	Line guide washer	105-114	H69-3401	Spool assembly
49	H16-8701	Line guide collar	115	B33-9801	Brake dial retainer
50	H27-5201	Line guide screw	116	H44-0001	Set plate spring
51	H43-2401	Front plate collar	117	H44-0201	Right side plate spacer
52	H55-5001	Yoke	118	H18-1901	Right side plate nut
53	H28-3201	Yoke spring	119	H46-5001	Right side plate spring
54	H55-5101	Pinion gear	120	H50-7201	Stabilizer bar