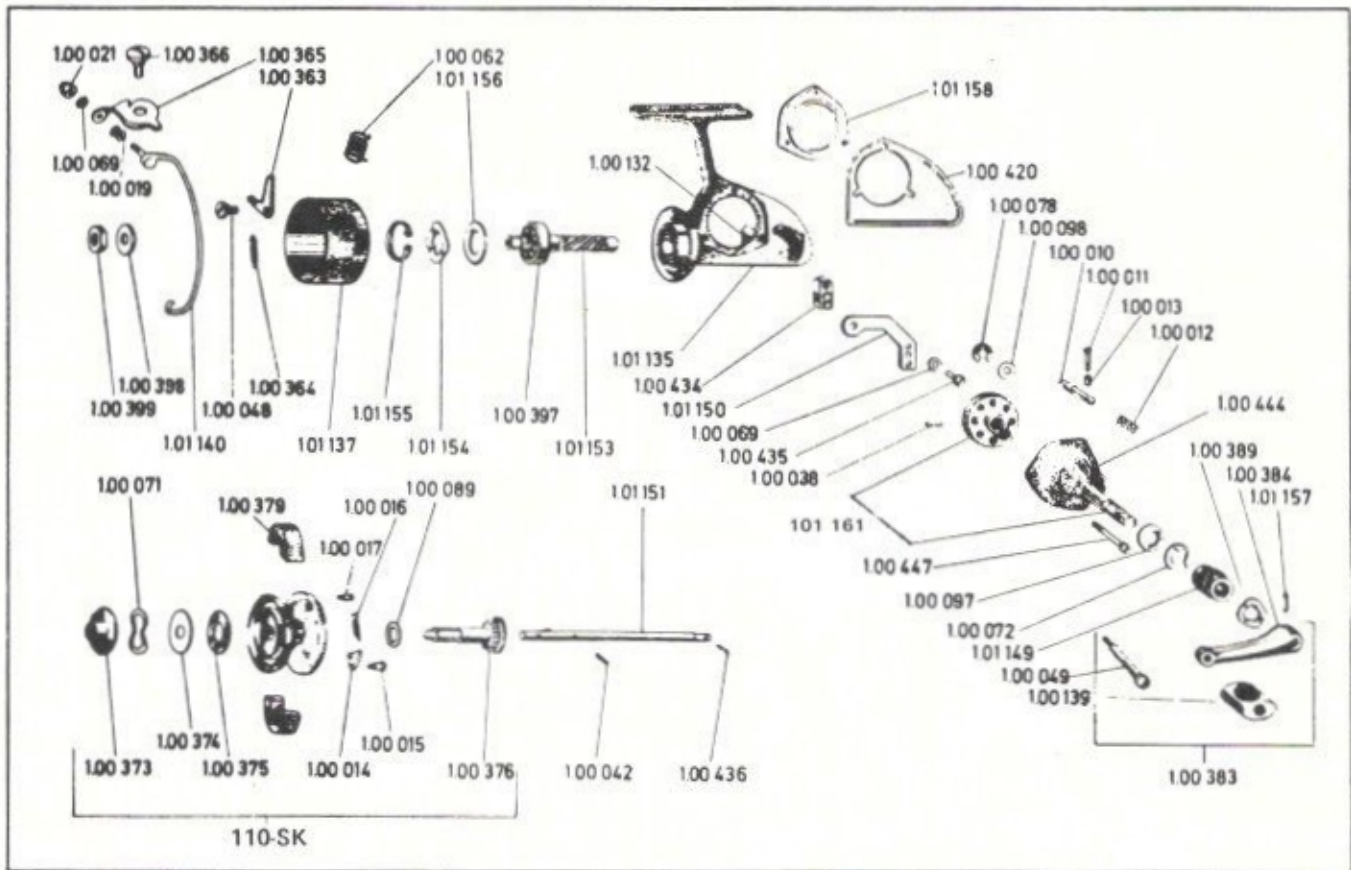


620 TERMINAL WAY • P. O. BOX 938 • COSTA MESA, CALIFORNIA 92627 • (714) 642-1163



IMPORTANT: AN "N" SERIES QUICK SPOOL WILL NOT FIT THIS REEL

QTY	PART NO.	DESCRIPTION	LIST PRICE	PART NO.	DESCRIPTION	LIST PRICE	QTY
	100-010	Anti-reverse pin	.55	100-375	Washer (nylon)	.25	
	100-011	Ball lever	.45	100-376	Brake spindle w/ratchet wheel	1.55	
	100-012	Spring	.25	100-379	Cork ring halves (2)	.30	
	100-013	Plastic tubing	.25	100-383	Crank arm, complete	1.80	
	100-014	Click tongue	.30	100-384B	Crank arm	1.30	
	100-015	Pin	.25	100-389	Washer	.25	
	100-016	Spring	.30	100-397	Ball bearing	3.40	
	100-017	Pin	.25	100-398	Washer	.25	
	100-019	Line guide	2.45	100-399	Hexagon nut	.30	
	100-021	Hexagon nut	.30	100-420	Side plate cover	.55	
	100-038	Pin for drive gear	.30	100-434	Connecting piece	.45	
	100-042	Pin for axle	.25	100-435	Screw for slide	.25	
	100-048	Lug screw	.25	100-436	Screw for axle	.25	
	100-049	Grip screw	.35	100-444	Bearing cover	1.90	
	100-062	Bail spring	.40	100-447	Screw for bearing cover	.25	
	100-069	Lock washer	.30	101-135	Housing	4.90	
	100-071	Spring washer	.25	101-137	Rotating head	4.05	
	100-072	Safety clip	.25	101-140	Bail	1.80	
	100-078	Safety clip	.25	101-149	Crank nut	.70	
	100-089	Washer	.25	101-150	Slide	.55	
	100-097	Washer	.25	101-151	Axle with pin	1.70	
	100-098	Washer	.25	101-153	Drive shaft	2.50	
	100-132	Bushing	.40	101-154	Spring washer	.30	
	100-139	Handle grip	.30	101-155	Snap ring	.30	
	100-363	Trip lever	.35	101-156	Packing ring	.25	
	100-364	Spring*	.30	101-157	Pin for crank arm	.25	
	100-365	Angle lever	.75	101-158	Plate cover	1.45	
	100-366	Bearing screw	.55	101-161	Drive axle & gear complete	3.90	
	100-373	Drag nut	.95	110-SK	Spool, complete	8.00	
	100-374	Washer (metal)	.30	***			
		*When out of stock use 100-068	.30				