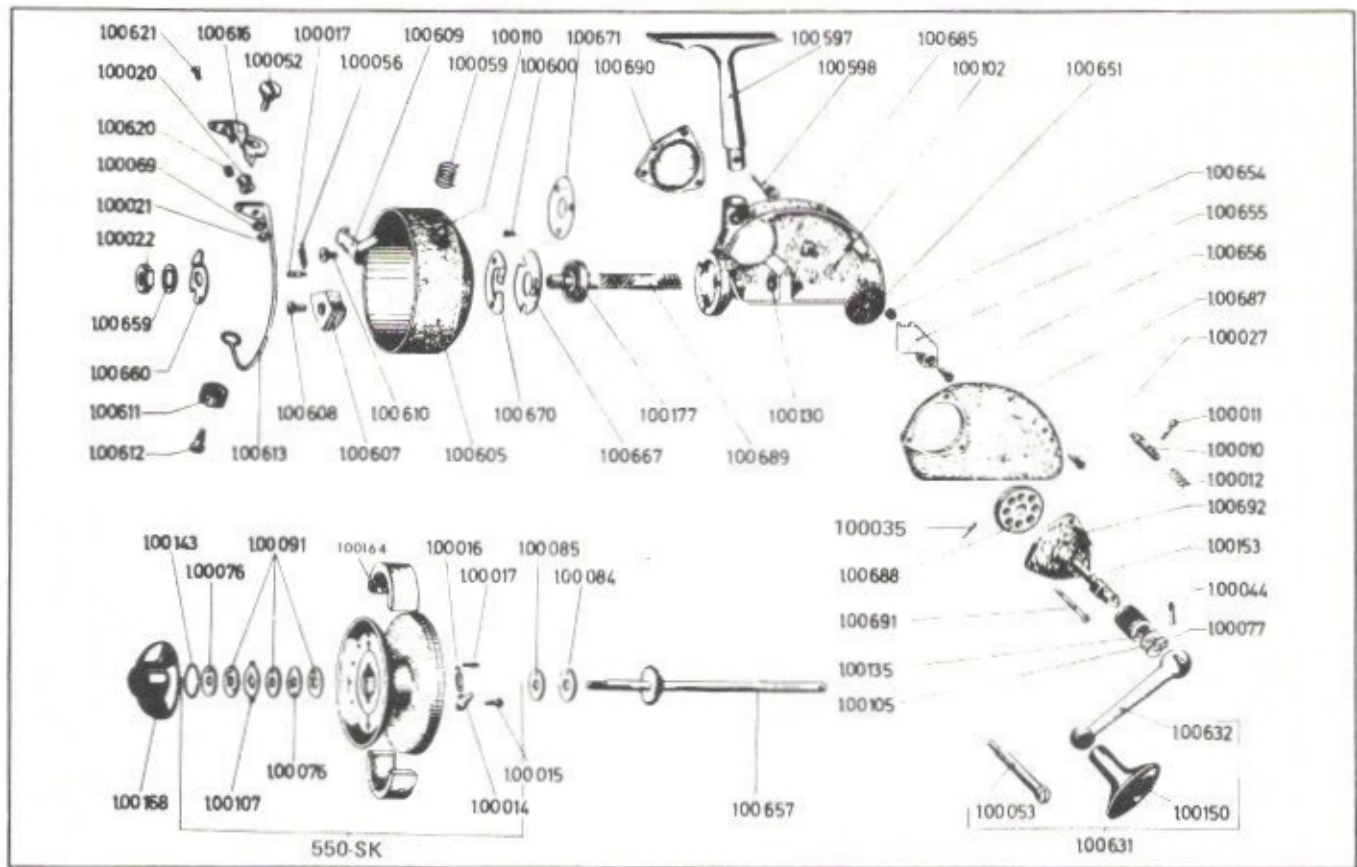


620 TERMINAL WAY • P. O. BOX 938 • COSTA MESA, CALIFORNIA 92627 • (714) 642-1163



IMPORTANT: AN "N" SERIES QUICK SPOOL WILL NOT FIT THIS REEL

QTY	PART NO.	DESCRIPTION	LIST PRICE	PART NO.	DESCRIPTION	LIST PRICE	QTY
	100-010	Anti-reverse pin	.55	100-177	Ball bearing	3.40	
	100-011	Ball lever	.45	100-597	Reel stand	2.30	
	100-012	Spring	.25	100-598	Cone screw	.65	
	100-014	Click tongue	.30	100-600	Screw for switch ring	.30	
	100-015	Pin	.25	100-605	Rotating Head W/607 & 608	4.60	
	100-016	Spring	.30	100-607	Counter-weight	.70	
	100-017	Pin	.25	100-608	Screw for counter-weight	.25	
	100-020	Line guide	3.00	100-609	Trip lever	.65	
	100-021	Hexagon nut	.30	100-610	Lug screw	.50	
	100-022	Hexagon nut	.35	100-611	Cop for pick up arm	.30	
	100-027	Screw for case cover	.25	100-612	Bearing screw	.40	
	100-035	Pin for drive axle	.25	100-613	Bail	4.80	
	100-038	Pin for drive gear	.30	100-616	Angle lever	1.50	
	100-044	Pin for crank arm	.30	100-620	Spacing bushing	.30	
	100-052	Bearing screw	.50	100-621	Screw for angle lever	.25	
	100-053	Grip screw	.80	100-631	Crank arm, complete	3.65	
	100-056	Spring	.30	100-632	Crank arm	2.65	
	100-059	Ball spring	.40	100-651	Worm wheel with pin	2.30	
	100-069	Lock washer	.30	100-654	Roller	.30	
	100-077	Washer	.30	100-655	Slide	.75	
	100-076	Tongue washer	.30	100-656	Screw for slide	.25	
	100-084	Washer (metal)	.25	100-657	Axle, complete	1.75	
	100-085	Washer (resitex)	.25	100-659	Spring washer	.25	
	100-091	Washer (resitex)	.25	100-660	Drive plate	.40	
	100-102	Washer	.25	100-667	Switch ring	.55	
	100-105	Washer slotted	.30	100-670	Braking ring	.45	
	100-107	Driving plate	.30	100-671	Gasket	.25	
	100-110	Rubber buffer with spring	.30	100-685	Housing with bushing	5.85	
	100-130	Bushing	.45	100-687	Housing cover	1.65	
	100-135	Crank nut	.60	100-688	Drive gear	2.50	
	100-143	Snap ring	.25	100-689	Drive shaft	5.95	
	100-150	Handle grip	.50	100-690	Plate cover	.95	
	100-153	Drive axle	1.70	100-691	Screw for bearing cover	.30	
	100-164	Cork ring (2 halves)	.40	100-692	Bearing cover w bushing and oiler	2.90	
	100-168	Drag nut	2.45				
				550-SK	Spool, complete	8.50	
				***	To convert to manual bail use P/N 8460	2.70	