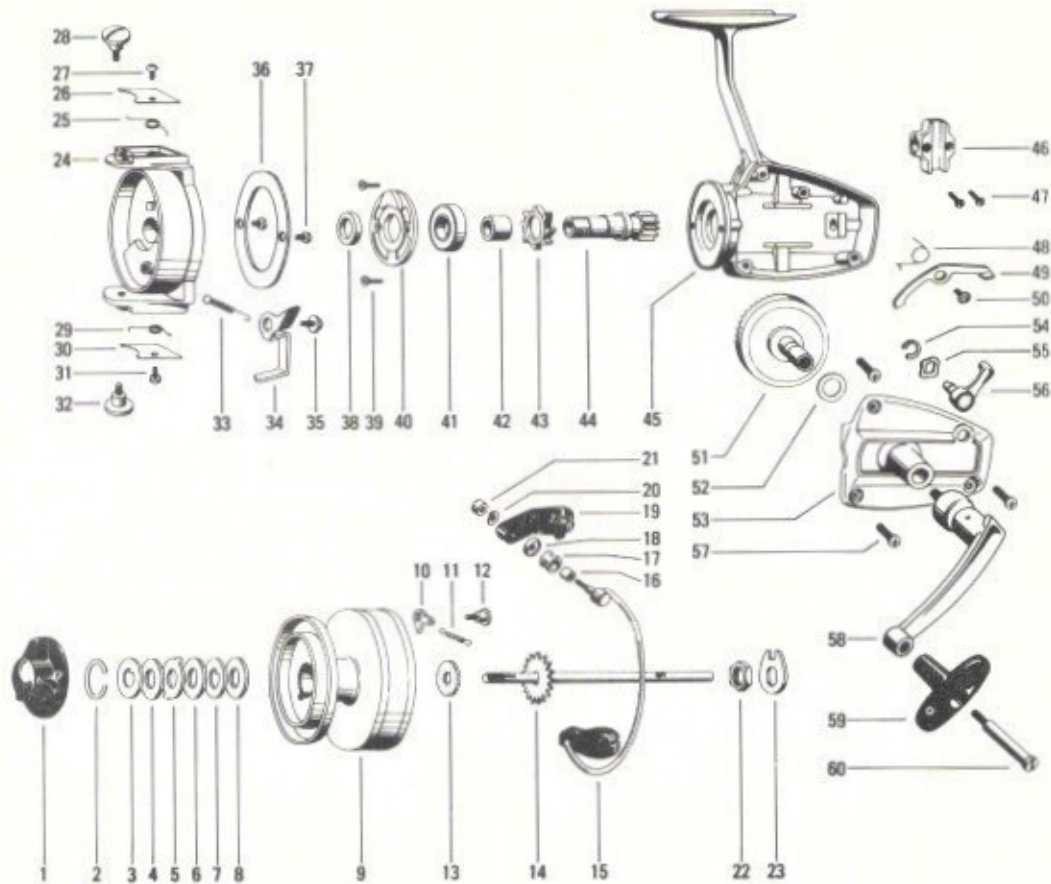


International 40



QTY	FIG. NO.	PART NO.	DESCRIPTION	LIST PRICE	FIG. NO.	PART NO.	DESCRIPTION	LIST PRICE
	1	110-785	Brake Nut	1.50	31	110-815	Case Cover Screw	.10
	2	110-786	Safety Ring	.10	32	110-816	Bearing Screw	.35
	3	110-787	Excenter Wheel	.15	33	110-817	Tension Spring	.15
	4	110-788	Brake Disc	.10	34	110-818	Stop Lever	1.50
	5	110-789	Driving Plate	.15	35	110-819	Lug Screw	.10
	6	110-790	Brake Disc	.10	36	110-820	Cover Plate	1.20
	7	110-791	Plane Wheel	.15	37	110-821	Half Round Screw	.10
	8	110-792	Brake Disc	.10	38	110-822	Bushing	.15
	9	110-793	Spool	7.50	39	110-823	Half Round Screw	.10
	10	110-794	Ratchet	.20	40	110-824	Plate	1.00
	11	110-795	Tension Spring	.10	41	110-825	Ball Bearing	2.50
	12	110-796	Lug Screw	.15	42	110-826	Bushing	.30
	13	110-797	Washer	.10	43	110-827	Ratchet Wheel	.55
	14	110-798	Axle Cpl	1.75	44	110-828	Pinion	3.25
	15	110-799	Bail Arm Cpl	2.60	45	110-829	Housing	5.25
	16	110-800	Bushing	.40	46	110-830	Guide Piece	.25
	17	110-801	Line Guide	.65	47	110-831	Screw	.10
	18	110-802	Washer	.30	48	110-832	Straight Spring	.15
	19	110-803	Angle Lever	.45	49	110-833	Stop Lever	.35
	20	110-804	Spring Washer	.10	50	110-834	Lug Screw	.10
	21	110-805	Plane Nut	.25	51	110-835	Driving Wheel	1.60
	22	110-806	Hexagon Nut	.20	52	110-836	Washer	.10
	23	110-807	Driving Plate	.15	53	110-837	Cover Cp.	2.50
	24	110-808	Flange	4.75	54	110-838	Safety Disc.	.10
	25	110-809	Changing Spring	.15	55	110-839	Spring-Washer	.15
	26	110-810	Cover	.45	56	110-840	Lever F. Anti-Reverse Cluth	.30
	27	110-811	Case Cover Screw	.10	57	110-841	Half Round Screw	.10
	28	110-812	Bearing Screw	.35	58	110-842	Crank Arm	2.40
	29	110-813	Changing Spring	.15	59	110-843	Handle Grip	.90
	30	110-814	Cover	.45	60	110-844	Grip Screw	.60