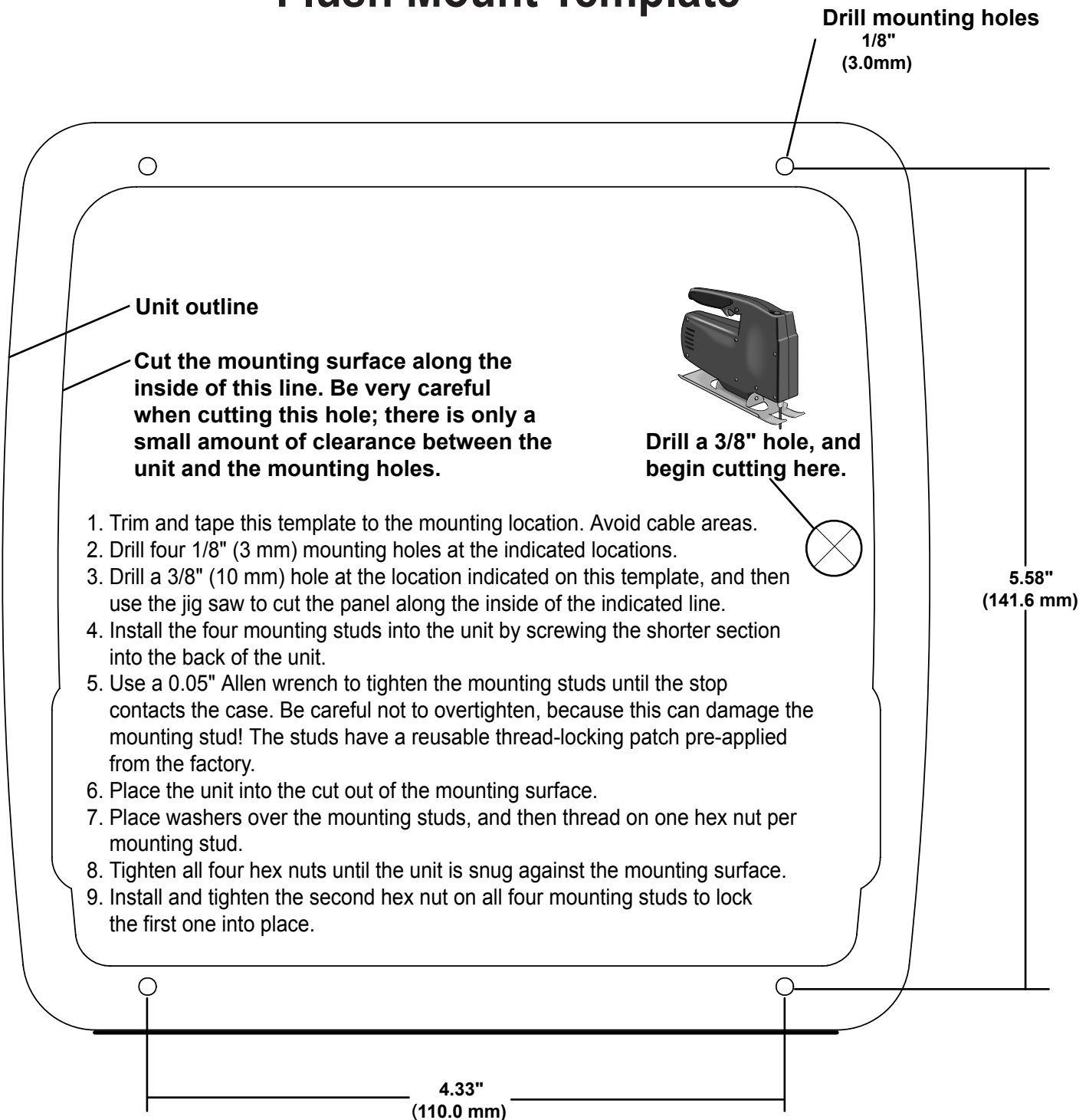




# Flush Mount Template



Unit outline

Cut the mounting surface along the inside of this line. Be very careful when cutting this hole; there is only a small amount of clearance between the unit and the mounting holes.

Drill a 3/8" hole, and begin cutting here.

1. Trim and tape this template to the mounting location. Avoid cable areas.
2. Drill four 1/8" (3 mm) mounting holes at the indicated locations.
3. Drill a 3/8" (10 mm) hole at the location indicated on this template, and then use the jig saw to cut the panel along the inside of the indicated line.
4. Install the four mounting studs into the unit by screwing the shorter section into the back of the unit.
5. Use a 0.05" Allen wrench to tighten the mounting studs until the stop contacts the case. Be careful not to overtighten, because this can damage the mounting stud! The studs have a reusable thread-locking patch pre-applied from the factory.
6. Place the unit into the cut out of the mounting surface.
7. Place washers over the mounting studs, and then thread on one hex nut per mounting stud.
8. Tighten all four hex nuts until the unit is snug against the mounting surface.
9. Install and tighten the second hex nut on all four mounting studs to lock the first one into place.