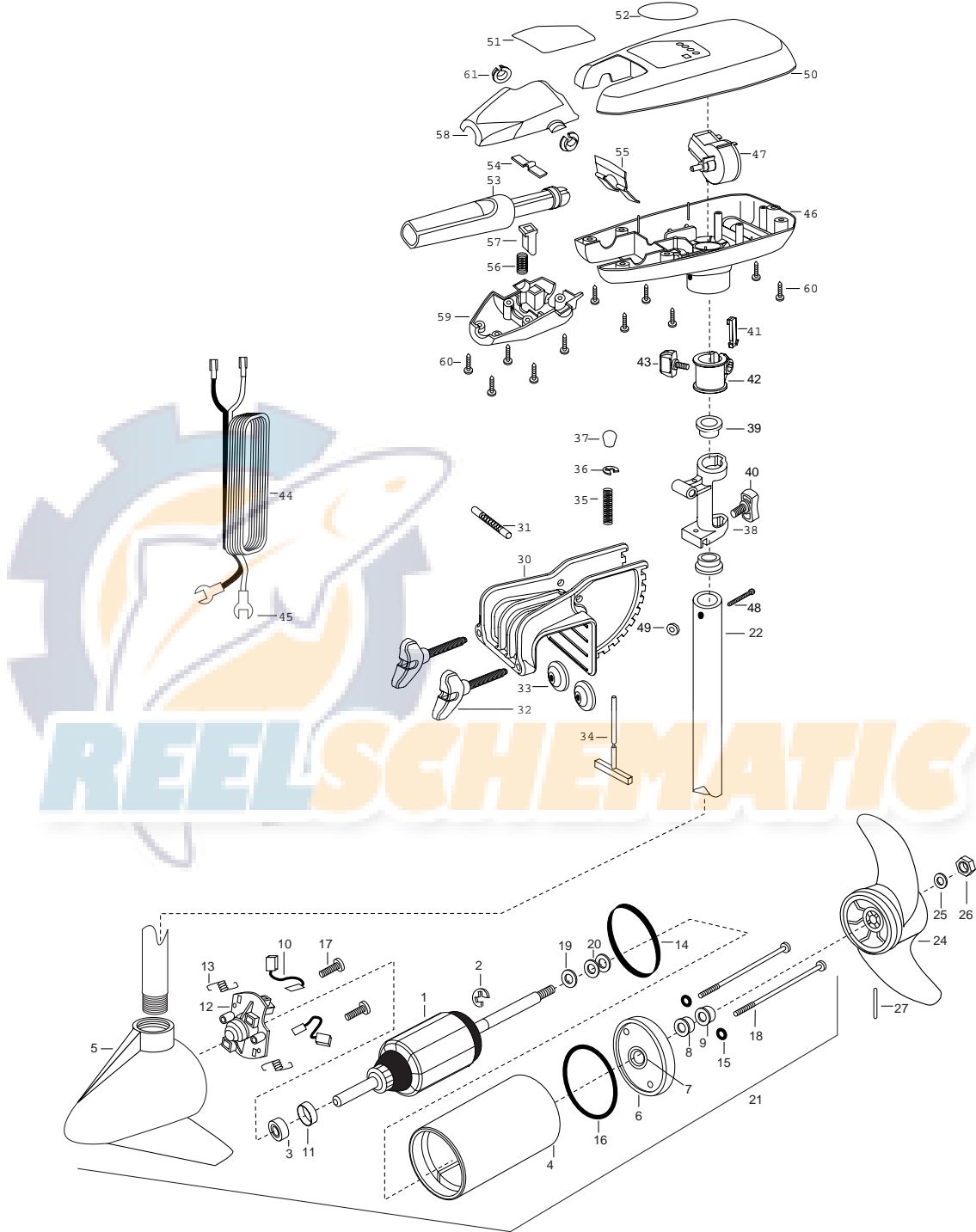


65T CABELA
24 VOLT
42" SHAFT



In the U.S.A., replacement parts may be ordered directly from MINN KOTA Parts Dept., 706 Holly Lane, Mankato, Minnesota 56001. In Canada, parts may be ordered from any of the Canadian Authorized Service Centers shown on the enclosed list. Be sure to provide the model and serial numbers of your motor when ordering parts. Please use the correct part numbers from the parts list. Payment for any parts ordered from the MINN KOTA parts department, may be by cash, personal check, Discover Card, MasterCard or VISA. To order, call 1-800-227-6433 or FAX 1-800-527-4464.

Fuera de los Estados Unidos, consultar la lista anexa para ubicar el Centro de servicio autorizado MINN KOTA. No dejar de incluir el número del MODELO y el número de SERIE del motor para el cual se solicitan las piezas. Usar siempre los números de pieza correctos indicados en la lista de piezas.

Hors de États-Unis, voir la liste ci-jointe pour le Centre de Service Agréé MINN KOTA le plus proche. Lors d'une commande, ne pas oublier de fournir le numéro de modèle et le numéro de série du moteur. Toujours mentionner le numéro de pièce exact figurant sur la liste des pièces de rechange.

Fora da América do Norte, queira consultar a lista anexa para identificar o Centro de Serviço Autorizado MINN KOTA. Não deixe de incluir o número do MODELO e o número de SÉRIE do seu motor ao pedir peças. Sempre use os números corretos das peças da lista de peças.

1	2-100-009	ARMATURE ASSEMBLY 24V 3.62 65#	*30	2031931	BRACKET DIE CAST- FW PAINT
2	788-015	RETAINING-RING	31	2010511	PIN-HINGE
3	140-010	BEARING -BALL	32	2061300	SCREW-CLAMP [2 EA.]
4	431-005	HOUSING- CENTER ASSEMBLY 3.62 65#	33	2011710	WASHER-CLAMP SCREW [2 EA.]
5	2-300-039	HOUSING- BRUSH END ASSEMBLY 3.62 TXT SPCO	34	2033600	T-BAR
6	2-400-101	PLAIN END HOUSING ASSEMBLY 3.625	35	2012700	SPRING- (T-BAR)
7	144-049	BEARING- FLANGE	36	2013000	E-RING
8	880-003	SEAL	37	2010100	KNOB-TILT
9	880-006	SEAL-W/SHIELD	38	2031852	HINGE- MACHINED
10	188-036	BRUSH ASSEMBLY 3.625 [2.EA]	39	2037300	BUSHING-HINGE [2 EA.]
11	725-050	PAPER TUBE- BRUSH RETENTION	40	2011385	SCREW, TENSION/KNOB
12	738-036	BRUSH PLATE WITH HOLDER	41	2062800	TENSION BLOCK-SNAP IN
13	975-040	SPRING- TORSION [2.EA]	42	2061520	COLLAR-DEPTH ENDURA
14	337-037	GASKET	43	2011365	SCREW-COLLAR/NEW KNOB
15	701-008	O-RING—THRU BOLT [2.EA]	44	2050609	LEADWIRE (10 GA) W/SPADE TERM
16	701-081	O-RING	45	2020702	SPADE TERMINAL 10 GA [2 EA.]
17	830-007	SCREW- 8-32 [2.EA]	46	2062551	CONTROL BOX
18	830-008	THRU BOLT 10-32X9.205 [2.EA]	47	2064023	SWITCH FWD/REV 5 SP
19	990-067	WASHER- STEEL	48	2033400	SCREW 10-24X1-3/4
20	990-070	WASHER- NYLATRON [2.EA]	49	2013110	NUT- HEX 10-24
21	2098034	MOTOR-ASSEMBLY 24V FW 47.75 LDS	50	2060205	CONTROL BOX COVER- GREY
22	2032053	TUBE (COMPOSITE) 42"	51	2065636	DECAL-COVER 65T 24V CABELA
■	1378122	PROPELLER KIT	52	2005601	DECAL- CABELA TOURN SERIES
24	2091150	PROP (WEEDLESS WEDGE)	53	2990912	HANDLE ASSEMBLY W/ U-JOINT 5SP
25	2151726	WASHER-PROP 5/16 STD SS	54	2302742	SPRING-DETENT (OFF) SS
26	2053101	NUT-PROP MED 5/16 SS	55	2302743	SPRING-DETENT HANDLE-TILT
27	2092600	PIN-DRIVE SS	56	2302745	SPRING-RELEASE BUTTON SS
■	2771960	BRACKET & HINGE ASSEMBLY FW (INCLUDES- 30—41)	57	2303720	RELEASE BUTTON-HANDLE
■	2771901	BRACKET ASSEMBLY (INCLUDES- 30,32,33)	58	2060408	HANDLE (TOP HALF)
			59	2060415	HANDLE (LOWER HALF)
			60	2303412	SCREW-6-20 X 5/8 SELF TAP [11 EA.]
			61	2060005	BEARING-HANDLE PIVOT [2 EA.]

* This item is part of an assembly. This item cannot be sold separately due to machining and /or assembly that is required. P/N 2064922 REV.A 9-01

24 VOLT
SYSTEM
65 only

