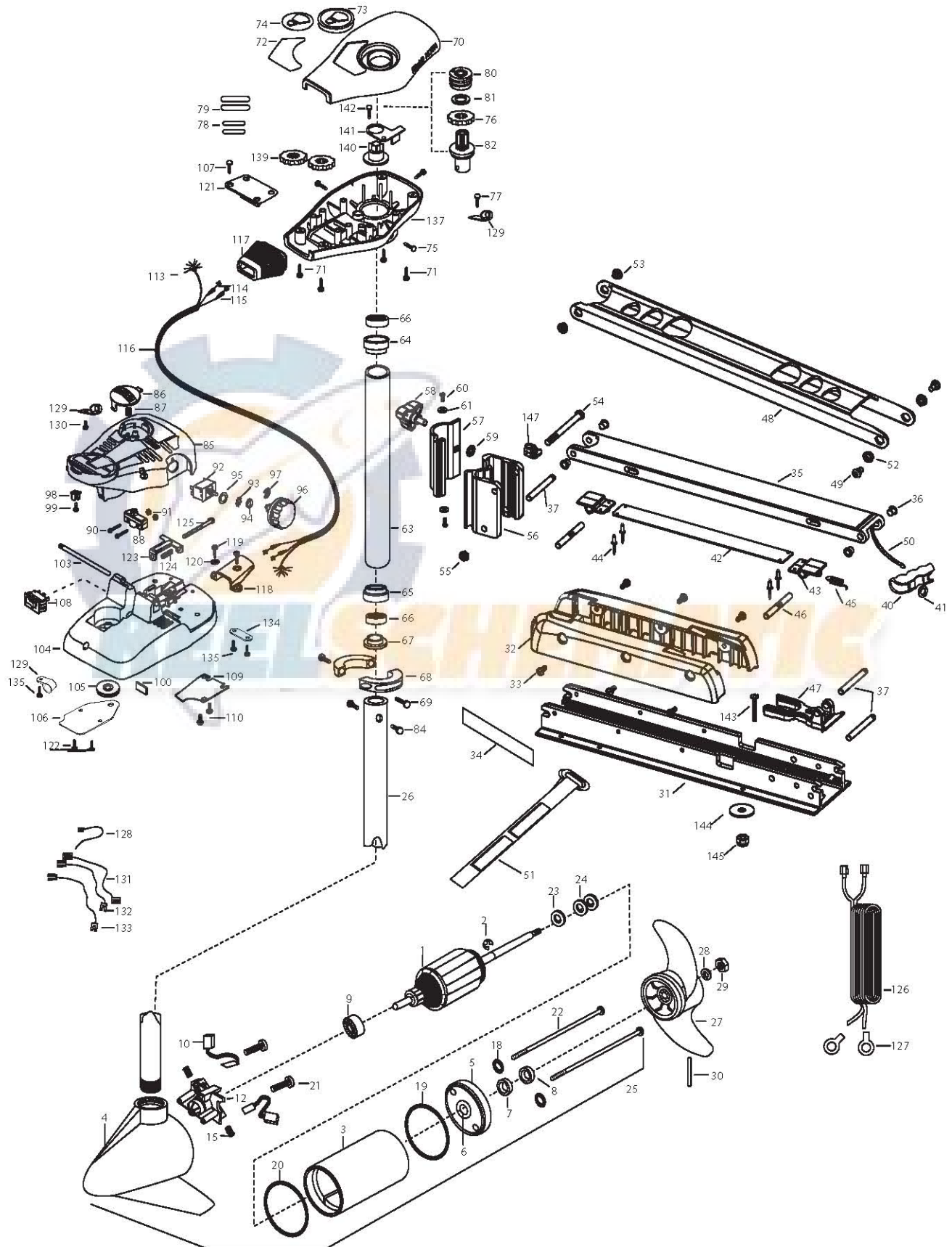


EDGE 65
65 LBS THRUST
24 VOLT 50 AMPS
45" SHAFT

for use with "AG" serial numbers
2-year warranty from the date of purchase



1	2-100-119	ARM ASSEMBLY 24V 3.625	58	2260900	HANDLE-SOFT GRIP, L&D	117	2265110	BOOT-CONTROL BOX
2	788-015	RETAINING RING	59	2261728	WASHER-RETAINING 3/8"	118	2265115	BOOT-FOOT PEDAL BASE
3	2-200-005	HOUSING ASSEMBLY CENTER 3.625 TXT	60	2053415	SCREW #8-32 X 3/8" TRI [2 EA.]	119	2372100	SCREW-8-18 X 5/8 THD [2.EA]
4	2-300-042	HOUSING-ASSEMBLY BRUSH END 3.625 SP.CO	61	2261732	WASHER #8, NYLON [2 EA.]	120	2261714	WASHER-MAXXUM FT PDL [2.EA]
5	2-400-101	PLAIN END HOUSING ASSEMBLY	■	2992012	TUBE W/BEARING RACE ASSEMBLY 21"	121	2261901	BRACKET-CONDUIT AT/MAX
6	144-049	BEARING- FLANGE [SERVICE ONLY]	63	2272069	TUBE OUTER-21" 4 HOLES	122	2223430	SCREW-8-18 X 3/4" [4.EA]
7	880-003	**SEAL	64	2266260	BEARING RACE	123	2263210	BRACKET- CONDUIT ADJUSTMENT
8	880-006	**SEAL WITH SHIELD	65	2266220	BEARING RACE-STEEL	124	2262720	SPRING-CONDUIT ADJUSTMENT
9	140-010	BEARING -BALL	66	2266000	BEARING BALL-STEEL [2.EA]	125	2263466	SCREW-1/4-20 X 2 STL PPH
10	188-036	BRUSH ASSEMBLY [2.EA]	67	2266115	BEARING CONE	126	2261235	LEADWIRE-BATTERY
12	738-036	BRUSH PLATE W/HOLDER 3.625	68	2261622	COLLAR HALF-ALUMINUM- [2.EA]	127	2020700	TERMINAL RING, 3/8" [2.EA]
15	975-040	SPRING- TORSION [2.EA]	69	2263453	SCREW-1/4X20 X 1" SHCS SS [2. A]	128	2256300	TIE WRAP-5.5" BLACK
18	701-008	**O-RING [2. EA]	70	2260286	COVER-CTR BOX EDGE/FC BLK	129	2263201	CLAMP WIRE HARNESS MICRO
19	337-036	**GASKET	71	2372100	SCREW-8-18 X 5/8 THD [4.EA]	130	2332103	SCREW-6-20 X 3/8 THD
20	701-081	**O-RING	72	2265669	DECAL-COVER EDGE 65/FC	131	2260301	CONNECTING WIRE -SWITCH
21	830-007	SCREW- SELF-THREAD 8-32X1.7 [2.EA]	73	2260150	POINTER DISC TRNSLCNT RED	132	2260312	WIRE,BLK W/WHT- 19 1/2
22	830-008	THRU BOLT 10-32 X 9.205 [2.EA]	74	2265800	DECAL-INDICATOR	133	2260322	WIRE,BLK W/BLUE -12"
23	990-067	WASHER- STEEL THRUST	75	2053414	SCREW-8-32 X 1/2 TRI LOBE [3. EA]	134	2263205	LEADWIRE CLAMP
24	990-070	WASHER- NYLATRON [2.EA]	76	2267800	GEAR-INDICATOR	135	9953104	SCREW-8 X 1/2" SS
25	2096035	MTR ASSEMBLY 24V 3.625 5SPD 45"	77	2301310	SCREW-8-18 X 1/2 SS	137	2262535	CONTROL BOX-PLASTIC
26	2032061	TUBE (COMP)W/CSK HOLE 45"	78	2375400	SHRINK TUBE-1/4OD X 1-3/4 [2. EA]	139	2267800	GEAR-INDICATOR [2.EA]
■	1378131	PROPELLER KIT	79	2355410	SHRINK TUBE-3/8 OD X 2 [2. EA]	140	2262220	INDICATOR-DRIVE
27	2091160	PROPELLER W/WEDGE 2	80	2232360	PULLEY-CABLE DRUM	141	2261905	BRACKET/INDICATOR
28	2151726	WASHER- 5/16 SS	81	2261730	WASHER-NYLON A/T	142	2372100	SCREW-8-18 X 5/8 (SS)
29	2053101	NUT-PROP NYLOC	82	2996246	BEARING RACE/ PINION ASSEMBLY	■	2994838	BAG ASSEMBLY
30	2092600	PIN-DRIVE SS	84	2263410	SCREW-8-32 X 5/16 ZN PL [2.EA]	*143	2263462	SCREW 1/4-20X2 SS [6.EA]
31	2266502	BOWPLATE, FW, STD, 45"	85	2790002	FOOT PEDAL/PLUG ASSEMBLY AT	*144	2261713	WASHER-1/4 FLAT 18-18 [6.EA]
32	2263905	MOTOR REST, BLK.	86	2263702	PUSH-BUTTON FOOT PEDAL W/MAGNET	*145	2263103	NUT- 1/4-20 NYLOC-JAM [6.EA]
33	2303430	SCREW 1/4-20 X 5/8 [6 EA.]	87	2302732	SPRING-LOWER PEDAL SS	147	2262310	GUIDE ROPE
34	2265667	MOTOR REST DECAL, FW [2 EA.]	88	2264040	SWITCH MOMENTARY			
■	2991704	BOWMOUNT FW ASSEMBLY, STD.	90	2262114	SCREW-MOUNTING/SWITCH [2.EA]			
35	2264341	LOWER ARM, FW, STD.	91	2233100	NUT-SWITCH MOUNT [2.EA]			
36	2266002	NYLINER 3/8" SHAFT [4 EA.]	92	2264026	SWITCH-S SPEED			
37	2260503	PIVOT PIN [3 EA.]	93	2261701	LOCKWASHER-STAR			
40	2150400	PULL-GRIP	94	2263105	NUT-HEX			
41	2151700	WASHER-EYE SHAFT .562 OD	95	2261715	SPACER-SWITCH 5 SP MODELS			
■	2993811	LATCH STRAP ASSEMBLY, STD, 45"	96	2260170	KNOB-SPEED CONTROL 5SPD			
42	2263605	LATCH STRAP, STD, 45"	97	2263000	E-RING TRU-ARC			
43	2261902	BRACKET-LATCH [2 EA.]	98	2260730	CONNECTOR 1/4 MALE TAB			
44	2268602	RIVET 1/8" SS [4 EA.]	99	2332103	SCREW-6-20 X 3/8			
45	2262709	SPRING-LATCH PIN	100	2266413	TENSION SCREW PLATE FT PEDL			
46	2260501	LATCH PIN [2 EA.]	103	2260511	PIN-PIVOT A/T FT PDL			
47	2261544	YOKE-TUBE	104	2992104	FT PEDAL BASE/PIN ASSEMBLY SONAR			
48	2264262	ARM-UPPER, FW, STD, 45"	105	2262301	PULLEY- FOOT PEDAL			
49	2263510	BOLT-SHOULDER, SS [2 EA.]	106	2266401	COVER-PULLEY STAMPING			
50	2251601	ROPE- 44.5" (45" MODEL)	107	2223430	SCREW-#8X 3/4 PPH TYPE 25 SS [4.EA]			
51	2263805	VELCRO STRAP	108	2254031	SWITCH-MOM/OFF/COM			
52	2267302	BUSHING-LOWER 7/16" ID, SS	109	2266412	SWITCH PLATE, FT PEDAL			
53	2267303	BUSHING-UPPER 3/8" ID, SS	110	2332103	SCREW-6-20 X 3/8 THD [2.EA]			
54	2263505	BOLT 3/8-16 X 4.25"	113	2261208	WIRE HARNESS, A/T FT. PED			
55	2263114	NUT-NYLOCK JAM 3/8-16	114	2267505	CABLE ASSEMBLY-RIGHT 5'			
56	2261872	HINGE BASE, FW	115	2267515	CABLE ASSEMBLY-LEFT 5'			
57	2261877	HINGE DOOR, FW	116	2265430	CABLE JACKET 5'			

** Seal & Oring Kit P/N 2888460 * THIS ITEM IS PART OF AN ASSEMBLY. THIS ITEM CANNOT BE SOLD SEPARATELY DUE TO MACHINING AND /OR ASSEMBLY THAT IS REQUIRED.

P/N 2274980 REV. A 8-05

Edge 65 is 24-volts!

