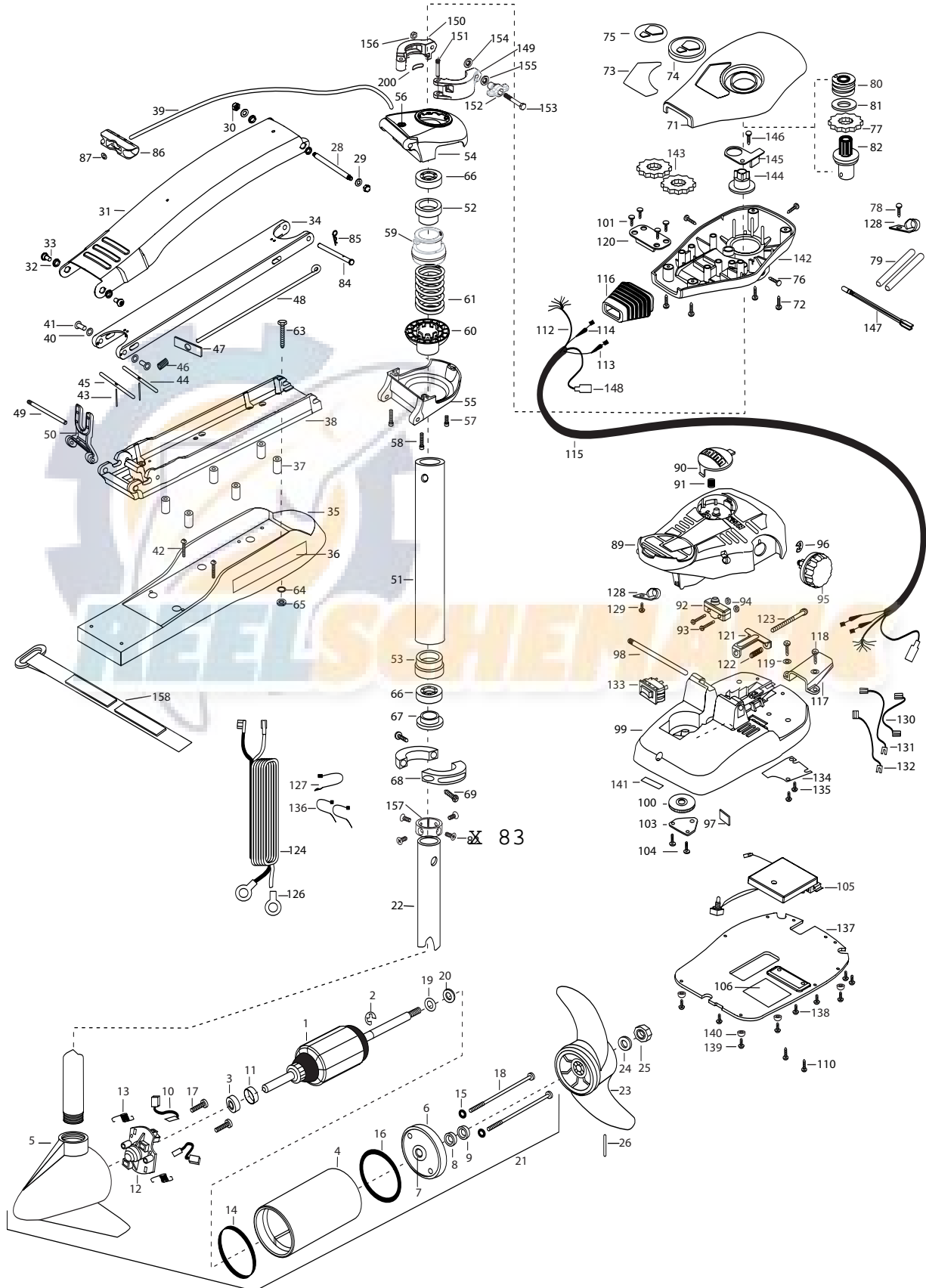


**MAXXUM 70 FC**  
70 lbs Thrust  
24 Volt 42 Amps  
42" SHAFT

for use with "AG" serial numbers  
3-year warranty from the date of purchase



|    |           |   |     |         |                                     |     |         |                                    |
|----|-----------|---|-----|---------|-------------------------------------|-----|---------|------------------------------------|
| 1  | 2-100-119 | ARMATURE ASSEMBLY   | 50  | 2293811 | YOKE- MAKXUM MOUNT,POLYPROPYLENE    | 103 | 2266400 | COVER- PULLEY                      |
| 2  | 788-015   | RETAINING RING  | ■   | 2772012 | TUBE W/BEARING RACE ASSEMBLY        | 104 | 2301310 | SCREW- 8-18 X 1/2 [4.EA]           |
| 3  | 140-010   | BALL BEARING  | 51  | 2272069 | TUBE OUTER-21" 4 HOLES              | 105 | 2264052 | CNTROL BOARD ASSEMBLY 24V MAX65/FC |
| 4  | 431-005   | CENTER HOUSING ASSEMBLY                                     | 52  | 2266260 | BEARING RACE                        | 106 | 2365107 | INSULATING PAD (2.3X3.2)           |
| 5  | 421-065   | HOUSING BRUSH END 3.62                                      | 53  | 2266220 | BEARING RACE- STEEL                 | 110 | 2263448 | SCREW- 8-32 X 1" [2.EA]            |
|    | 9421-165  | HOUSING BRUSH END 3.62 SONAR                                | ■   | 2991762 | BOWGUARD ASSEMBLY- FT CTRL,FW       | 112 | 2261219 | WIRE HARNESS AT & MAX              |
| 6  | 2-400-101 | PLAIN END HOUSING ASSEMBLY                                  | 54  | 2772319 | BRACKET BASE TOP/ EYELET ASSEMBLY   | 113 | 2267505 | CABLE ASSEMBLY- RIGHT (5')         |
| 7  | 144-049   | BEARING - FLANGE (SERVICE CENTER ONLY)                      | *55 | 2991771 | BRKT BOTTOM/BEARING FW ASSEMBLY     | 114 | 2267515 | CABLE ASSEMBLY- LEFT (5')          |
| 8  | 880-003   | **SEAL  | 56  | 2772352 | EYELET- KIT                         | 115 | 2265430 | CABLE JACKET (5')                  |
| 9  | 880-006   | **SEAL WITH SHIELD  | 57  | 2263423 | SCREW 5/16-18 X 1" SHCS ZINC        | 116 | 2265110 | BOOT- CONTROL BOX                  |
| 10 | 188-036   | BRUSH ASSEMBLY [2.EA]                                       | 58  | 2263425 | SCREW 5/16-18 X 2 1/2" SHCS [2.EA]  | 117 | 2265115 | BOOT- FOOT PEDAL BASE              |
| 11 | 725-050   | BRUSH RETENTION- PAPER TUBE                                 | 59  | 2071541 | SPRING SLEEVE- UPPER                | 118 | 2372100 | SCREW- 8-18X5/8 THD [2.EA]         |
| 12 | 738-036   | BRUSH PLATE W/HOLDER  | 60  | 2071535 | SPRING SLEEVE- LOWER                | 119 | 2261714 | WASHER- MAXXUM FT PDL [2.EA]       |
| 13 | 975-040   | SPRING - TORSION [2.EA]                                     | 61  | 2262712 | SPRING- BOWGUARD, NIK PL            | 120 | 2261901 | BRACKET- CONDUIT                   |
| 14 | 337-036   | **GASKET  | ■   | 2994830 | BAG ASSEMBLY- MAXXUM                | 121 | 2263210 | BRACKET- CONDUIT ADJUST            |
| 15 | 701-008   | **O-RING, THRU-BOLT [2.EA]                                  | *63 | 2263431 | SCREW- 1/4-20 X 3.5 PPH [6.EA]      | 122 | 2262720 | SPRING- CONDUIT ADJUST             |
| 16 | 701-081   | **O-RING  | *64 | 2261713 | WASHER- 1/4 FLAT S/S [6.EA]         | 123 | 2263463 | SCREW- 1/4-20X2" STL PPH           |
| 17 | 830-007   | SCREW-8-32 [2.EA]   | *65 | 2263103 | NUT- 1/4-20 NYLOCK-JAM SS [6.EA]    | 124 | 2261227 | LEADWIRE- A/T VARIABLE             |
| 18 | 830-008   | THRU-BOLT 10-32X9.2 [2.EA]                                  | 66  | 2266000 | BEARING BALL- STEEL [2.EA]          | 126 | 2020700 | TERMINAL RING- 3/8" [2.EA]         |
| 19 | 990-067   | WASHER- STEEL THRUST  | *67 | 2266115 | BEARING CONE                        | 127 | 2256300 | TIE WRAP- 5.5' BLACK               |
| 20 | 990-070   | WASHER- NYLATRON  | *68 | 2261619 | COLLAR HALF- ZINC [2.EA]            | 128 | 2263201 | CLAMP WIRE HARNESS MICRO [2.EA]    |
| 21 | 2096030   | MOTOR ASSEMBLY 24V F/W                                      | *69 | 2263452 | SCREW- 1/4-20X3/4 [2.EA]            | 129 | 2332103 | SCREW- 6-20X3/8 THD (SS)           |
|    | 2106030   | MOTOR ASSEMBLY 24V F/W SONAR                                | 71  | 2260283 | CONTROL BOX COVER- MAXXUM           | 130 | 2260316 | CONNECTING WIRE (VAR.SPD)          |
| 22 | 2032003   | TUBE- COMPOSITE W/4 HOLE 42"                                | 72  | 2372100 | SCREW- 8-18 X 5/8 THD [4.EA]        | 131 | 2260312 | WIRE- BLK W/WHT STRP 19 -1/4"      |
| ■  | 1378131   | PROPELLER KIT   | 73  | 2265643 | DECAL- COVER MAX70/FC               | 132 | 2260323 | WIRE- BLK W/GRN STP VARIABLE       |
| 23 | 2091160   | PROPELLER W.WEDGE 2   |     | 2265646 | DECAL - COVER MAX70/FC SONAR        | 133 | 2254031 | SWITCH- MOM/OFF/CON                |
| 24 | 2151726   | WASHER-5/16 SS  | 74  | 2260150 | POINTER DISC TRNSLCNT RED           | 134 | 2266412 | SWITCH PLATE- FT PEDAL             |
| 25 | 2053101   | NUT-PROP NYLOC  | 75  | 2265800 | DECAL- INDICATOR                    | 135 | 2332103 | SCREW- 6-20X3/8 THD SS [2.EA]      |
| 26 | 2092600   | PIN-DRIVE   | 76  | 2053414 | SCREW- 8-32 X 1/2 TRI-LOBE [3. EA]  | 136 | 2256301 | TIE WRAP- 5.5' WHITE [2.EA]        |
| 28 | 2262605   | PIN- BWGRD UPPER THREADED ZP                                | 77  | 2267800 | GEAR- INDICATOR                     | 137 | 2774511 | BOTTOM PLATE- MAXXUM FT            |
| 29 | 2261722   | WASHER- FLAT [2.EA]   | 78  | 2301310 | SCREW- 8-18 X 1/2                   | 138 | 9953104 | SCREW-8 X 1/2" (SS) [5.EA]         |
| 30 | 2223100   | NUT- TENSION 5/16-18 SS [2.EA]                              | 79  | 2355410 | SHRINK TUBE- 3/8 OD X 2" [2.EA]     | 139 | 2263455 | SCREW- #12-14X1/2 THR FRM [4.EA]   |
| ■  | 2991840   | MOUNT- ASSEMBLY, W/O BG, STD FW MAX                         | 80  | 2232360 | PULLEY- CABLE DRUM                  | 140 | 2265126 | BUMPER PAD- FOOT PEDAL [4.EA]      |
| 31 | 2264241   | ARM-UPPER STD FW  | 81  | 2261730 | WASHER- NYLON A/T CON               | 141 | 2266610 | DECAL- ON/OFF SWITCH               |
| 32 | 2293501   | BUSHING- STAINLESS STEEL [4.EA]                             | 82  | 2996247 | TOP BEARING RACE /PINION DRIVE      | 142 | 2262535 | CONTROL BOX- PLASTIC               |
| 33 | 2263500   | BOLT- SHOULDER MAXXUM [2.EA]                                | 83  | 2223468 | SCREW- 8-32 X 7/16 [4.EA]           | 143 | 2267800 | GEAR- INDICATOR [2.EA]             |
| 34 | 2774315   | ARM-LOWER ASSEMBLY,STD,FW,EXTRA [INCLUDES 39, 43-47, 86,87] | 84  | 2262607 | PIN- CLEVIS ZP MAXXUM BWGRD         | 144 | 2262220 | INDICATOR- DRIVE                   |
|    |           |   | 85  | 2260805 | CLIP- SPRING ZP MAX BG              | 145 | 2261905 | BRACKET/INDICATOR                  |
| 35 | 2263912   | MOTOR REST (STD) FW   | 86  | 2150400 | PULL- GRIP                          | 146 | 2301310 | SCREW- 8-18X1/2"                   |
| 36 | 2265514   | DECAL- MAXXUM MOTOR REST [2.EA]                             | 87  | 2151700 | WASHER- EYE SHAFT(.562 OD)          | 147 | 2264015 | LIGHT/INDI0CATOR                   |
| 37 | 2261505   | SPACER- MOTOR REST [6.EA]                                   | 89  | 2790002 | FOOT PEDAL/PLUG ASSEMBLY            | 148 | 2211400 | EXTENSION CABLE- SONAR             |
| 38 | 2773987   | BOWPLATE- W/INSERT  | 90  | 2263700 | PUSH- BUTTON FOOT PEDAL             | ■   | 2991550 | CLAMP COLLAR ASSEMBLY              |
| 39 | 2251601   | ROPE (40"), MAXXUM MOUNT                                    | 91  | 2302732 | SPRING- LOWER PEDAL                 | 149 | 2071550 | CLAMP COLLAR "A"                   |
| 40 | 2261708   | WASHER- 3/8X1/2X.010 SS [2.EA]                              | 92  | 2264023 | SWITCH- SEALED ASSEMBLY             | 150 | 2071555 | CLAMP COLLAR "B"                   |
| 41 | 2236000   | BEARING NYLINER [2.EA]                                      | 93  | 2262114 | SCREW- MOUNTING/SWITCH [2.EA]       | 151 | 2072621 | PIN-KNURLED                        |
| 42 | 2263434   | SCREW, 8-18X1" PPH [2.EA]                                   | 94  | 2233100 | NUT- SWITCH MOUNT [2.EA]            | 152 | 2070120 | KNOB-CLAMP COLLAR                  |
| 43 | 2152610   | SPRING- PIN LOCKBAR [2.EA]                                  | 95  | 2260160 | KNOB- SPEED CONTROL (VAR)           | 153 | 2073412 | SCREW 1/4-28 X 2 3/4" SS           |
| 44 | 2233600   | LOCK BAR- BOW MOUNT   | 96  | 2263000 | E-RING THU-ARC                      | 154 | 2071718 | WASHER #10 NYLON RETAINING         |
| 45 | 2233602   | LOCK BAR REAR - ZINC  | 97  | 2266413 | TENSION SCREW PLATE FTPEDAL         | 155 | 2071716 | WASHER - FLAT SS                   |
| 46 | 2152700   | SPRING- LOCKBAR CAD.PLTD                                    | *98 | 2260511 | PIN- PIVOT A/T FT PDL               | 156 | 2073102 | NUT - HEX 1/4 - 28 SS              |
| 47 | 2262703   | SPRING STOP- MAXXUM   | 99  | 2774550 | FT PEDAL BASE/PIN ASSEMBLY          | 157 | 2071560 | SPLIT COLLAR                       |
| 48 | 2153602   | EYE SHAFT-2LOCKBAR STD                                      | 100 | 2262301 | PULLEY- FOOT PEDAL                  | 158 | 2263804 | STRAP - VELCRO 30.5"               |
| 49 | 2260506   | HINGE-PIN HEADLESS ZINC                                     | 101 | 2223430 | SCREW- #8X3/4 PPH TYPE 25 SS [4.EA] | 200 | 2075120 | URETHANE PAD                       |

\*\* Seal & Oring Kit P/N 2888460 \* This item is part of an assembly. This item cannot be sold separately due to machining and /or assembly that is required.

