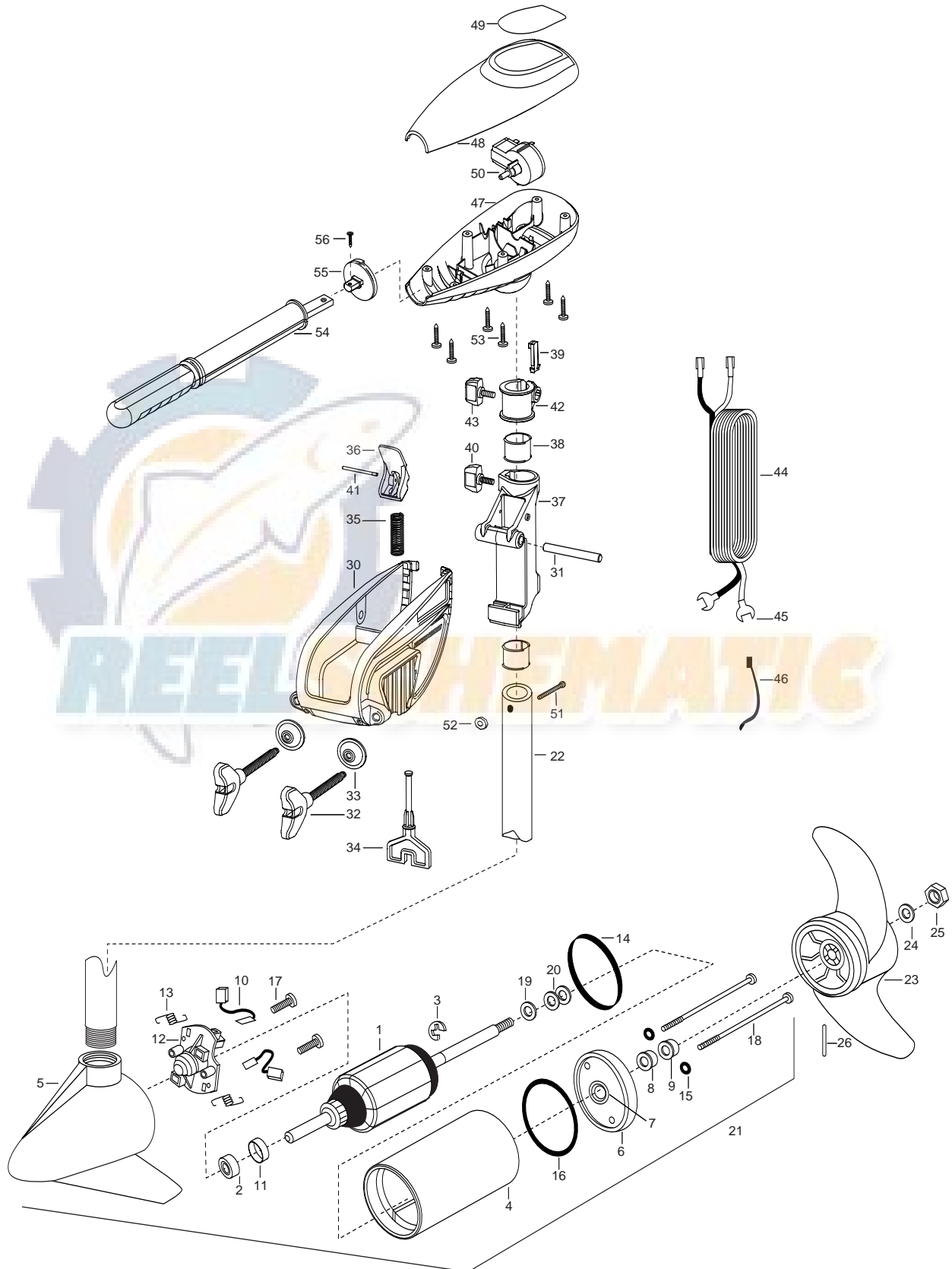


ENDURA PRO 46
46 LBS. THRUST
12 VOLT 42 AMPS
36" SHAFT

for use with "AG" serial numbers
3-year warranty from the date of purchase



| | | | | | |
|----|-----------|--------------------------------------|-----|---------|--|
| 1 | 2-100-116 | ARMATURE ASSEMBLY 12V 3.62 FW | ■ | 2771811 | BRACKET & HINGE ASSEMBLY (INCLUDES- 30—41) |
| 2 | 140-010 | BEARING- BALL | ■ | 2771910 | BRACKET ASSEMBLY (INCLUDES- 30,32,33) |
| 3 | 788-015 | RETAINING RING | *30 | 2061910 | BRACKET ENDURA |
| 4 | 431-101 | HOUSING ASSEMBLY- CENTER | 31 | 2060510 | PIN-HINGE ENDURA |
| 5 | 2-300-196 | BRUSH END HOUSING ASSEMBLY 3.62 SPCO | ■ | 2881300 | SCREW-CLAMP, WASHER, RETAINER [2.EA] KIT |
| 6 | 2-400-101 | PLAIN END HOUSING ASSEMBLY | *32 | 2061300 | SCREW- CLAMP ENDURA [2.EA] |
| 7 | 144-049 | BEARING- FLANGE ,SERVICE ONLY | *33 | 2011710 | WASHER- CLAMP SCREW 1.5OD [2.EA] |
| 8 | 880-003 | **SEAL | 34 | 2063605 | T-BAR, PLASTIC ENDURA |
| 9 | 880-006 | **SEAL WITH SHIELD | 35 | 2062706 | SPRING- T-BAR ENDURA |
| 10 | 188-036 | BRUSH ASSEMBLY [2.EA] | 36 | 2067200 | LEVER-TILT (RED |
| 11 | 725-050 | BRUSH RETENTION- PAPER TUBE | 37 | 2061810 | HINGE-PLASTIC |
| 12 | 738-036 | BRUSH PLATE WITH HOLDER | 38 | 2037301 | BUSHING-HINGE [2.EA] |
| 13 | 975-040 | SPRING- TORSION [2.EA] | 39 | 2062800 | TENSION BLOCK-SNAP IN |
| 14 | 337-036 | **GASKET | 40 | 2011385 | SCREW, TENSION/KNOB |
| 15 | 701-008 | **O-RING [2.EA] | 41 | 2060515 | PIN- TILT LEVER |
| 16 | 701-081 | **O-RING | 42 | 2061520 | COLLAR-DEPTH ENDURA |
| 17 | 830-007 | SCREW- # 8-32 [2.EA] | 43 | 2011365 | SCREW-COLLAR/NEW KNOB |
| 18 | 830-042 | THRU BOLT 10-32X8.83 [2EA] | 44 | 2050609 | LEADWIRE (10 GA) SPADE TERM |
| 19 | 990-067 | WASHER- STEEL THRUST | 45 | 2020702 | SPADE TERMINAL 10GA. [2.EA] |
| 20 | 990-070 | WASHER- NYLATRON [2.EA] | 46 | 2026300 | TIE WRAP |
| 21 | 2097061 | MOTOR ASSEMBLY 12V 3.62 5SPC TXT 47 | 47 | 2062510 | CONTROL BOX ENDURA |
| 22 | 2032052 | TUBE COMPOSITE 36" | 48 | 2060214 | CONTROL BOX COVER- BLACK |
| ■ | 1378131 | PROPELLER- KIT | 49 | 2065651 | DECAL COVER- ENDURA PRO 4 |
| 23 | 2091160 | PROP- W. WEDGE 2 | 50 | 2064023 | SWITCH-FWD/REV 5 SP |
| 24 | 2151726 | WASHER- 5/16 STD SS | 51 | 2033400 | SCREW-10-24 X 1-3/4 PPH ZP |
| 25 | 2053101 | NUT- NYLOC 5/16 | 52 | 2013110 | NUT-10-24 HEX |
| 26 | 2092600 | PIN-DRIVE | 53 | 2012100 | SCREW-8-18 X 5/8 THD CUT [6.EA] |
| | | | 54 | 2990901 | HANDLE ASSEMBLY 5 SPEED |
| | | | 55 | 2060405 | PIVOT, HANDLE |
| | | | 56 | 2012102 | SCREW |

** Seal & Oring Kit P/N 2888460 * This item is part of an assembly. This item cannot be sold separately due to machining and /or assembly that is required.

P/N 2064951 REV. A 7-04

