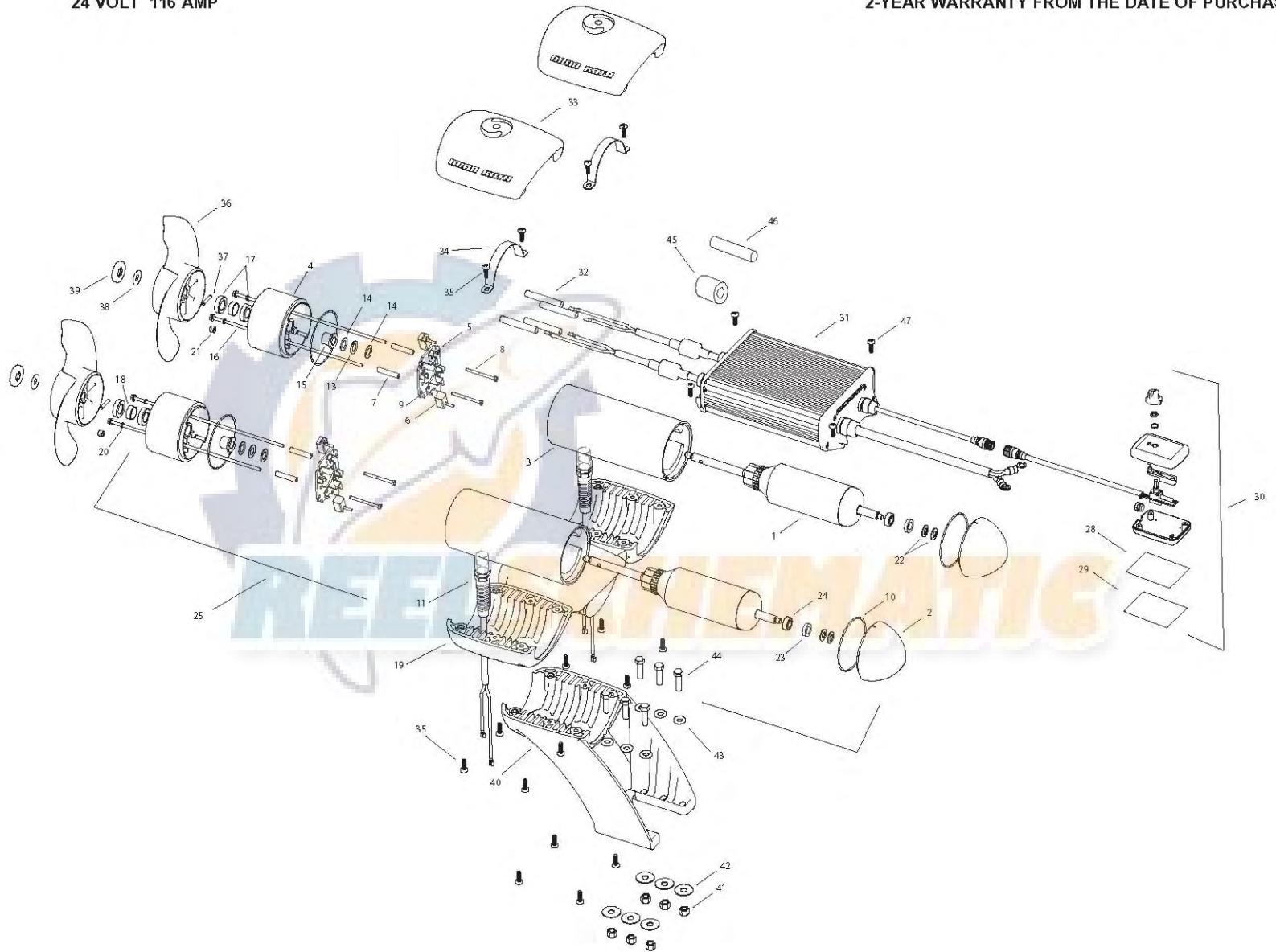


EM 160
24 VOLT 116 AMP

FOR USE WITH "AH" SERIAL NUMBERS
2-YEAR WARRANTY FROM THE DATE OF PURCHASE



| | | |
|----|-----------|--|
| 1 | 2-100-234 | ARMATURE 24V 4.0 [1 PER MOTOR] |
| 2 | 421-276 | PLAIN END [1 PER MOTOR] |
| 3 | 2-200-161 | CENTER HOUSING ASSEMBLY [1 PER MOTOR] |
| 4 | 2-300-149 | BRUSH END HOUSING (CONTAINS 4, 15, 17 (2), 18) |
| 5 | 2-600-234 | BRUSH PLATE ASSEMBLY (CONTAINS 5, 6, 9) |
| 6 | 188-094 | BRUSH [2 PER MOTOR] |
| 7 | 973-025 | SPACER - BRUSH PLATE [2 PER MOTOR] |
| 8 | 830-027 | SCREW #10-32 X 2 SLF THREAD [2 PER MOTOR] |
| 9 | 975-041 | BRUSH SPRING [2 PER MOTOR] |
| 10 | 701-043 | O-RING [2 PER MOTOR] |
| 11 | 2772917 | LEADWIRE ASSEMBLY [1 PER MOTOR] |
| | | |
| 13 | 990-051 | WASHER STEEL [1 PER MOTOR] |
| 14 | 990-052 | WASHER NYLATRON [1 PER MOTOR] |
| 15 | 144-017 | FLANGE BEARING [1 PER MOTOR] |
| 16 | 830-094 | THRU-BOLT 12-24 X 10.31 [2 PER MOTOR] |
| 17 | 880-025 | SEAL [2 PER MOTOR] |
| 18 | 725-095 | PAPER TUBE [1 PER MOTOR] |
| 19 | 2381945 | BRACKET, DUAL MOUNT |
| 20 | 701-009 | O-RING THRUBOLT [2 PER MOTOR] |
| 21 | 836-001 | ALUMINUM PLUG [1 PER MOTOR] |
| 22 | 992-010 | SPRING WASHER [2 PER MOTOR] |
| 23 | 990-045 | THRUST SPACER [1 PER MOTOR] |
| 24 | 140-010 | BALL BEARING [1 PER MOTOR] |
| 25 | 2396233 | MOTOR ASSY 24V 4.0 80# [2 EA] |
| 28 | 9950953 | VELCRO 1.5 X 2.0 LOOP |
| 29 | 9950950 | VELCRO 1.5 X 2.0 HOOK |
| 30 | 2990241 | HAND CONTROLLER |
| 31 | 2990228 | CONTROL MODULE |
| 32 | 2385401 | SHRINK TUBE [4 EA] |
| 33 | 2380210 | TOP CAP [2 EA] |
| 34 | 2383810 | STRAP, EM [2 EA] |
| 35 | 2383418 | SCREW 1/4-20 SELF TAPPING [16 EA] |
| ■ | 1378132 | PROP KIT [1 PER MOTOR] |
| 36 | 2331160 | PROPELLER [1 PER MOTOR] |
| 37 | 2262658 | DRIVE PIN [1 PER MOTOR] |
| 38 | 2091701 | WASHER, PROP LARGE [1 PER MOTOR] |
| 39 | 2093101 | NUT, PROP [1 PER MOTOR] |
| 40 | 2381940 | LOWER BRACKET |
| 41 | 2383122 | NUT 3/8-16 NYLOCK [6EA] |
| 42 | 2381726 | WASHER FENDER 3/8 X 1 1/4 OD [3 EA] |
| 43 | 2381728 | WASHER 3/8 [3 EA] |
| 44 | 2383422 | SCREW 3/8 X 1 1/4 [6EA] |
| 45 | 2307310 | FERRITE BEAD [2 EA] (EUROPEAN MOTORS ONLY) |
| 46 | 2075401 | HEATSHRINK [2 EA] (EUROPEAN MOTORS ONLY) |
| 47 | 2373427 | SCREW #12 X 5/8 [4 EA] |
| ■ | 2994856 | BAG ASSY (CONTAINS 38-41,32,28,29,47,TIE WRAPS) [2 EA] |

24V

(+) AND (-)
TO SECOND
MOTOR
(+) ET (-) AU
DEUXIÈME
MOTEUR

CONTROL MODULE
(DUAL UNIT SHOWN)
MODULE DE
COMMANDE
(POUR DEUX UNITÉS ICI
ILLUSTRÉ)

HAND CONTROLLER
COMMANDE MANUELLE

RED (+)
ROUGE (+)

BLACK (-)
NOIR (-)

VIOLET (+)
VIOLET (+)

GRAY (-)
GRIS (-)

CONNECTING WIRE
FIL DE RACCORDEMENT

