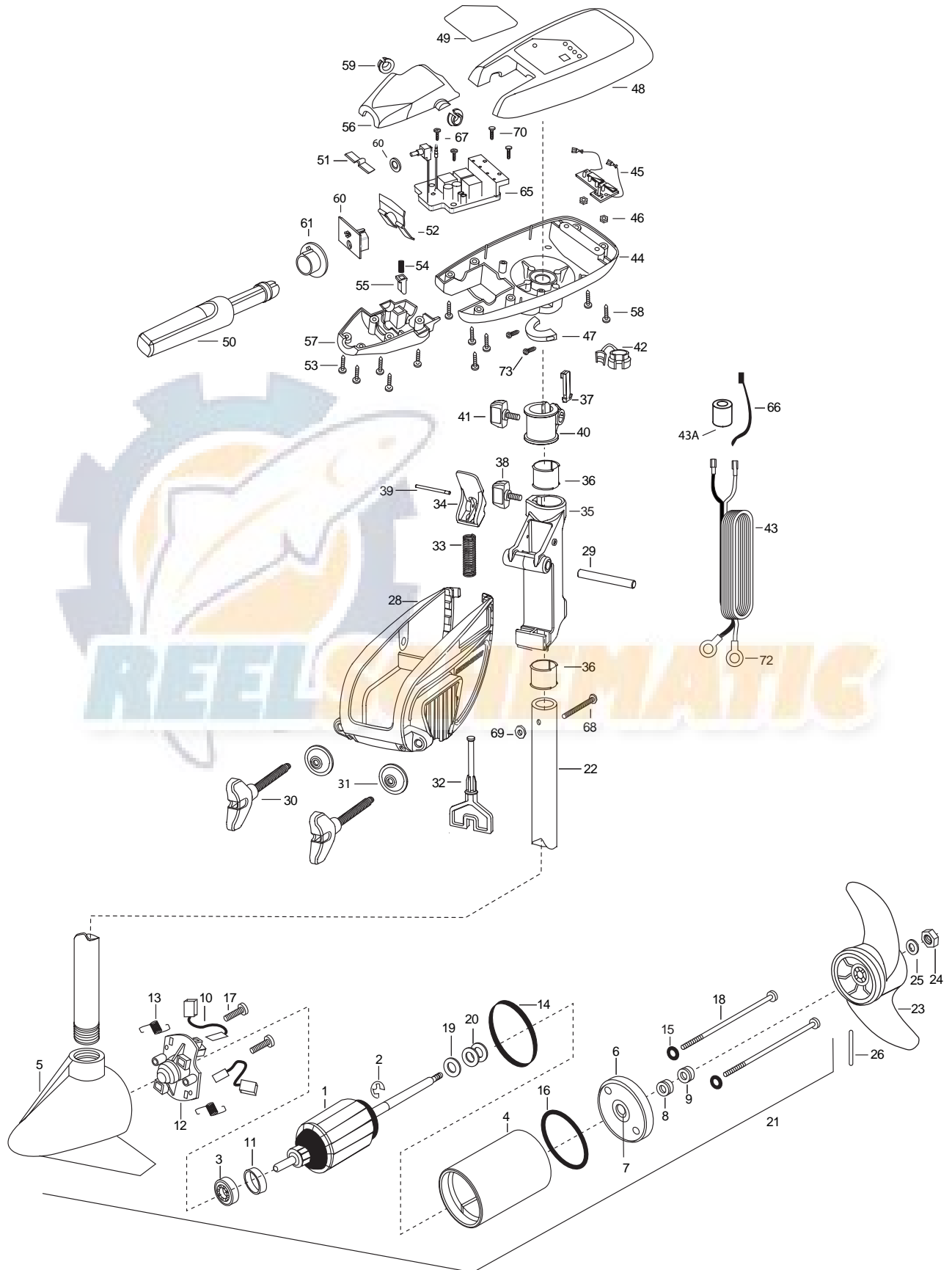


MAXXUM 46T  
46 LBS. THRUST  
12 VOLT 42 AMPS  
36" SHAFT

for use with "AH" serial numbers  
3-year warranty from the date of purchase



|     |           |  |     |         |                                  |
|-----|-----------|--|-----|---------|----------------------------------|
| 1   | 2-100-116 | ARMATURE ASSEMBLY 12V F/W                  | 37  | 2062800 | TENSION BLOCK-SNAP IN            |
| 2   | 788-015   | RETAINING RING                             | 38  | 2011385 | SCREW, TENSION/KNOB              |
| 3   | 140-010   | BEARING -BALL                              | 39  | 2060515 | PIN, TILT LEVER                  |
| 4   | 431-101   | HOUSING ASSEMBLY CENTER 3.62               | 40  | 2061520 | COLLAR-DEPTH                     |
| 5   | 421-065   | HOUSING BRUSH END ASSEMBLY 3.62 TXT        | 41  | 2011365 | SCREW-COLLAR/NEW                 |
| 6   | 2-400-101 | PLAIN END HOUSING ASSEMBLY                 | 42  | 2052900 | STRAIN RELIEF C CORD/SP.C        |
| 7   | 144-049   | FLANGE BEARING (SERVICE ONLY)              | 43  | 2090600 | LEADWIRE (10 GA) RINGS           |
| 8   | 880-003   | SEAL                                       | 43A | 2307310 | BEAD - FERRITE (CE MODELS ONLY)  |
| 9   | 880-006   | SEAL W/SHIELD                              | 44  | 2062592 | CONTROL BOX,FW, .725 BORE,       |
| 10  | 188-036   | BRUSH ASSEMBLY                             | 45  | 2074070 | BATTERY GAUGE-12 VOLTS           |
| 11  | 725-050   | PAPER TUBE- BRUSH RETENTION                | 46  | 2303120 | SPEED NUT [2.EA]                 |
| 12  | 738-036   | BRUSH PLATE W/HOLDER                       | 47  | 2061515 | COLLAR-CTRL BOX (FRS-WTR)        |
| 13  | 975-040   | SPRING -TORSION [2.EA]                     | 48  | 2990294 | CTRL BOX CVR/DECAL ASSEMBLY      |
| 14  | 337-036   | GASKET                                     | 49  | 2065666 | DECAL-COVER MAX 46/T             |
| 15  | 701-008   | O-RING -THRU BOLT [2.EA]                   | 50  | 2990914 | HANDLE ASSEMBLY W/O U-JOINT      |
| 16  | 701-081   | O-RING                                     | 51  | 2302742 | SPRING-DETENT (OFF) SS           |
| 17  | 830-007   | SCREW 8-32X1 [2.EA]                        | 52  | 2302743 | SPRING-DETENT (HANDLE-TILT       |
| 18  | 830-042   | THRU BOLT 10-32X8.83 (2 EA)                | 53  | 2303412 | SCREW-6-20 X 5/8 SELF TAP [6.EA] |
| 19  | 990-067   | WASHER -STEEL THRUST                       | 54  | 2302745 | SPRING-RELEASE BUTTON SS         |
| 20  | 990-070   | WASHER -NYLATRON [2.EA]                    | 55  | 2303720 | RELEASE BUTTON-HANDLE            |
| 21  | 2097063   | MOTOR ASSEMBLY -12V 3.625 F/W VARS TXT     | 56  | 2060409 | HANDLE (TOP HALF) MAXIMIZE       |
| 22  | 2032052   | TUBE (COMPOSITE) 36"                       | 57  | 2060415 | HANDLE (LOWER HALF)              |
| ■   | 1378131   | PROPELLER KIT                              | 58  | 2303412 | SCREW-6-20 X 5/8 SELF TAP [5.EA] |
| 23  | 2091160   | PROPELLER- WEEDLESS WEDGE 2                | 59  | 2060005 | BEARING-HANDLE PIVOT [2.EA]      |
| 24  | 2151726   | WASHER- 5/16 STD SS                        | 60  | 2184020 | POT ADAPTER                      |
| 25  | 2053101   | NUT-PROP NYLOC 5/16 SS                     | 61  | 2992852 | ACTUATOR-CAM                     |
| 26  | 2092600   | PIN-DRIVE SS                               | 64  | 2181700 | WASHER, SPACER                   |
| ■   | 2771818   | BRACKET & HINGE ASSEMBLY (INCLUDES- 28—39) | 65  | 2184000 | CONTROL BOARD 12V                |
| ■   | 2771910   | BRACKET ASSEMBLY (INCLUDES- 28,30,31)      | 66  | 2256300 | TIE WRAP-5.5 BLACK               |
| *28 | 2061910   | BRACKET- PLASTIC                           | 67  | 2372100 | SCREW-8-18 X 5/8 THD SS [2.EA]   |
| 29  | 2060510   | PIN-HINGE                                  | 68  | 2383407 | SCREW-10-24 X 2 PPH ZINC         |
| ■   | 2881300   | SCREW-CLAMP, WASHER, RETAINER KIT [2.EA]   | 69  | 2383124 | NUT-10-24 NYLOCK ZINC            |
| *30 | 2061300   | SCREW-CLAMP [2.EA]                         | 70  | 2301310 | SCREW-8-18 X 1/2 SS [2.EA]       |
| *31 | 2011710   | WASHER-CLAMP SCREW [2.EA]                  | 72  | 2020700 | TERMINAL- RING 3/8 [2.EA]        |
| 32  | 2063605   | T-BAR, PLASTIC                             | 73  | 2263434 | SCREW #8 X 1" PPH SS [2.EA]      |
| 33  | 2062706   | SPRING- (T-BAR)                            |     |         |                                  |
| 34  | 2067200   | LEVER-TILT (RED)                           |     |         |                                  |
| 35  | 2061810   | HINGE-PLASTIC                              |     |         |                                  |
| 36  | 2037301   | BUSHING-HINGE [2.EA]                       |     |         |                                  |

# Max46T is 12-volt!

