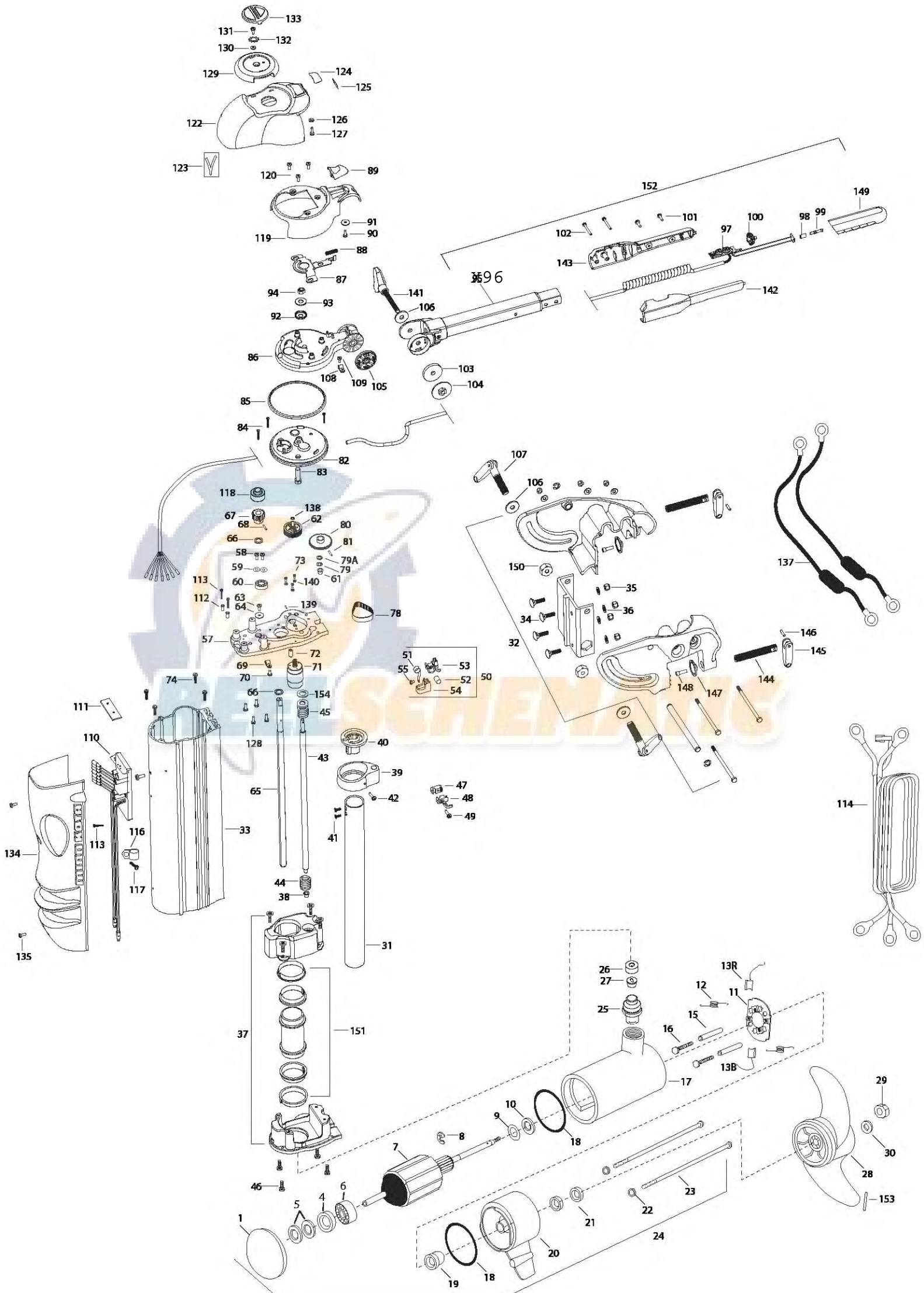


VANTAGE 80
80 LBS THRUST
24 VOLT 56 AMPS

for use with "AI" serial numbers
2-year warranty from the date of sale



1	421-276	PLAIN END HOUSING ASSEMBLY	58	2053414	SCREW-#8-32 X 1/2 TRI-LOBE[2.EA]	*107	2050922	HANDLE, TENSION, SHORT
4	990-045	THRUST SPACER	59	2051717	WASHER-#8 SAE FLAT ZNK PLT [2.EA]	108	2052510	CABLE CLAMP, 3/16" VANTAGE [2.EA]
5	992-010	SPRING WASHER [2.EA]	*60	2057306	BEARING-BALL (VANTAGE)	109	2053415	SCREW-#8-32 X 3/8" TRI-LB[3.EA]
6	140-010	BALL BEARING	*61	2057302	BEARING-UPPER, LIFT SCREW	*110	2774041	CNTRL BRD ASSY 24/36V W/PAD INCL.111
7	2-100-214	ARMATURE ASSEMBLY 24V 4"	*62	2052630	PIN, CLUSTER GEAR	*111	2315105	INSULATING PAD
8	788-040	RETAINING RING	63	2053415	SCREW-#8-32 X 3/8 TRI-LOBE P	112	2261712	SHOULDER WASHER [2.EA]
9	990-051	WASHER-THRUST, STEEL	64	2051716	WASHER-FENDER #10	113	2053407	SCREW-#8-32 X .75 PPH[3.EA]
10	990-052	WASHER- NYLATRON	65	2052001	SHAFT-STEERING, VANTAGE	114	2051220	LEADWIRE, 24/36V, 3 CONDUCT
■	2-600-144	BRUSH/WIRE/PLATE ASSEMBLY INCL.11-13	66	2051706	WASHER-SPRING SUPPORT[2.EA]	116	2052512	CABLE CLAMP, 1/2" VANTAGE
*11	738-004	BRUSH PLATE 4" TERMINAL	67	2052205	GEAR, STEERING TUBE MACHINED	117	2053415	SCREW-#8-32 X 3/8" TRI-LOBE P
*12	975-041	SPRING -TORSION [2.EA]	*68	2052615	PIN-DRIV-LOK 1/8 X 1 1/8	118	2052210	ROLLER-STEERING SHAFT
13	188-094	BRUSH	69	2052510	CABLE CLAMP, 3/16" VANTAGE	■	2880102	CONTROL HEAD COVER LATCH KIT
15	973-025	SPACER -BRUSH PLATE [2.EA]	70	2053415	SCREW-#8-32 X 3/8 TRI-LOBE P			INCL. 89,90,91,119
16	830-027	SCREW -SELF THREADED 10-32 X 2" [2.EA]	71	2777812	MOTOR-LIFT (12,24,36V)	119	2050200	COVER-CONTROL HEAD
17	2-200-160	CENTER HOUSING FIELD ASSEMBLY	72	2058410	TENSIONER-BELT (VANTAGE)	120	2053415	SCREW-#8-32 X 3/8" TRI-LOBE[3.EA]
18	701-043	O-RING (2 REQ'D)	73	2053422	SCREW - 3MM	121	2012100	SCREW-8-18 X 5/8" THD CUT[3.EA]
19	144-017	BEARING -FLANGE (SERVICE ONLY)	74	2053413	SCREW-10-16X1' TYPE AB,HEX[4.EA]	122	2050211	SHROUD-CONTROL HEAD
20	2-300-160	BRUSH END HOUSING ASSEMBLY	■	2882201	CLUSTER GEAR / FLANGE PULLEY KIT	123	2055612	DECAL-SHROUD (VANTAGE)[2.EA]
21	880-025	SEAL [2.EA]			INCL. 75,76,77	124	2055604	DECAL-COVER
22	701-009	O-RING -THRU BOLT [2.EA]	*75	2770428	PULLEY/PINION GEAR ASSEMBLY	125	2055610	DECAL-COVER, LED
23	830-094	THRU BOLT 12-24 X10.31[2.EA]	*76	2058405	FLANGE-PULLEY (VANTAGE)	126	2051712	WASHER- .152 ID, .50 OD, .06
24	2316271	MOTOR ASSEMBLY, 4", 24V	*77	2053418	SCREW 4-40 X 1/4 PPH[2.EA]	127	2302100	SCREW-6-20 X 1/2" THD CUT
25	979-015	STRAIN RELIEF - BODY	78	2050800	BELT-DRIVE (VANTAGE)	128	2012100	SCREW-8-18 X 5/8" THD CUT(4REQ'D)
26	9950339	CAP - STRAIN RELIEF	79	2051705	WASHER-NYLON ID.312 X OD.	129	2050110	KNOB-POINTER, VANTAGE
27	2382900	GROMMET- STRAIN RELIEF	79A	2051703	WASHER-THRUST ID.315, OD.562	130	2051717	WASHER- #8 SAE FLAT ZNK PLT
28	2331160	PROPELLER (W.WEDGE 2) MAX 101	■	2882200	GEAR LIFT/PIN KIT INCL.80,62	131	2332101	SCREW-8-32 X 1/2" SS
29	2093101	NUT-PROP NYLOC (LARGE) MAX 101	*80	2990426	LIFT GEAR ASSEMBLY	132	2371715	LOCKWASHER-STAR #8 ZINC
30	2091701	WASHER-PROP (LARGE) MAX 101	81	2052620	PIN-DRIV-LOK 1/8 X 5/8"	133	2056700	PLUG, POINTER, VANTAGE
31	2772010	TUBE-MOTOR, 1 3/4" KIT W/TEMPLATE	82	2056520	CAP-LOWER, GEAR HOUSING	134	2050220	SHIELD-EXTRUSION, VANTAGE
32	2991822	TRANSOM BRACKET ASSEMBLY 36V	83	2383500	BOLT-3/8-16 X 1.25	135	2053414	SCREW-#8-32 X 1/2" TRI-LOBE[2.EA]
33	2056505	HOUSING EXTRUSION	84	2053402	SCREW-10-24 X 1" TRI-LOBE [3.EA]	136	2055611	DECAL-SHIELD (VANTAGE)[3.EA]
34	2053511	BOLT-CARRIAGE 5/16-18 1"[4.EA]	85	2054600	O-RING, GEAR HOUSING	137	2998200	CIRCUIT BRKR ASSEMBLY 36V [2.EA]
35	2151726	WASHER-5/16 STD (S/S)[4.EA]	86	2056510	CAP-UPPER, GEAR HOUSING	138	2051732	WASHER .315 X .562
36	2053103	NUT, 5/16-18 NYLOC [4.EA]	87	2057200	LATCH (VANTAGE)	139	2053420	SET SCREW #8-32
37	2770420	LOWER SUPPORT CAGE ASSEMBLY	88	2052711	SPRING, LATCH RETURN	140	2051710	LOCKWASHER 3MM
38	2057302	BEARING-UPPER, LIFT SCREW	89	2050102	KNOB-LATCH (VANTAGE)	141	2050921	HANDLE TENSION - LONG
■	2881510	YOKE/BEARING RACE KIT INCL.39,40,42	90	2353401	SCREW-10-16 X 1/2 STALGD	■	2880910	HANDLE L/R KIT
*39	2051510	YOKE-LIFT SCREW	91	2051716	WASHER-FENDER #10			INCL. 100,101,102,142,143,150
*40	2056200	BEARING RACE-YOKE	92	2151730	WASHER-CUP (HINGE BRACKET)	*142	2050916	HANDLE SIDE L
41	2053401	SCREW-10 X 1/2,TYPE 25,[2.EA]	93	2051737	WASHER-3/8 FLAT (ZINC)	*143	2050911	HANDLE SIDE R
42	2353401	SCREW-10-16 X 1/2 STALGD	94	2053107	NUT-3/8-16, TOPLOCK	144	2880925	HANDLE/CLAMP SCREW KIT
43	2053400	SCREW-LIFT, 1/2-10 ACME	96	2990921	HANDLE ASSEMBLY, VANTAGE	149	2880424	GRIP KIT
44	2052707	SPRING-COIL,SOFT STOP	■	2884106	HANDLE CTRL BOARD/GRIP KIT INCL. 97,149	*150	2053105	NUT- HEX
45	2770429	COIL SPRING/WASHER ASSEMBLY KIT	*97	2994005	CTRL BOARD ASSEMBLY-HANDLE	151	2881500	TUBE/SLEEVE/BUSHING KIT
46	2053413	SCREW-10-16X1' TYPE AB,HEX(4REQ'D)	98	2055115	BUTTON SWITCH ACTUATOR	152	2990950	HANDLE/CTRL BOARD ASSEMBLY
■	2883200	WIRE CLAMP KIT INCL. 47,48,49	■	2883701	PLUNGER/GRIP KIT INCL. 99,149	153	2262658	PROP PIN
*47	2053200	WIRE CLAMP, LEFTHAND	*99	2053700	PLUNGER, ON/OFF	154	2340610	CONNECTOR CABLE
*48	2053205	WIRE CLAMP, RIGHTHAND	100	2050111	KNOB-SPEED CONTROL			
*49	2053417	SCREW-10-16X3/4 TYPE BT,PPH	101	2012100	SCREW-8-18 X 5/8" THD CUT[2.EA]			
50	2770400	TAPE SPRING ASSEMBLY INCL. 51-55	102	2053412	SCREW 8 X 1.5"TYPE 25 PPH[2.EA]			
51	2052705	SPRING, CONSTANT FORCE	■	2880921	HANDLE TENSION KNOB KIT			
52	2052610	PIN-PIVOT 7/16" O.D.			INCL. 103,104,105,141			
53	2051920	BRACKET-SPRING	*103	2051736	WASHER-URETHN,ID.4 X OD 1			
54	2052305	WIRE GUIDE (VANTAGE)	*104	2053115	NUT-WASHER, HANDLE ASSEMBLY			
55	2053418	SCREW-#4-40X1/4 TYPE F,PPH	*105	2050015	RACHET-DISK, HANDLE ASSEMBLY			
56	2050225	WIRE SHIELD	■	2880920	BRACKET TENSION HANDLE KIT			
■	2770405	TOP PLATE ASSEMBLY INCL.57,60,61,68			INCL. 106,107,150			
*57	2051927	TOP PLATE, VANTAGE	*106	2051737	WASHER-FLAT,ID.406 X OD.8			

2889460 seal & oring kit

VANTAGE 80
24 VOLTS ONLY

