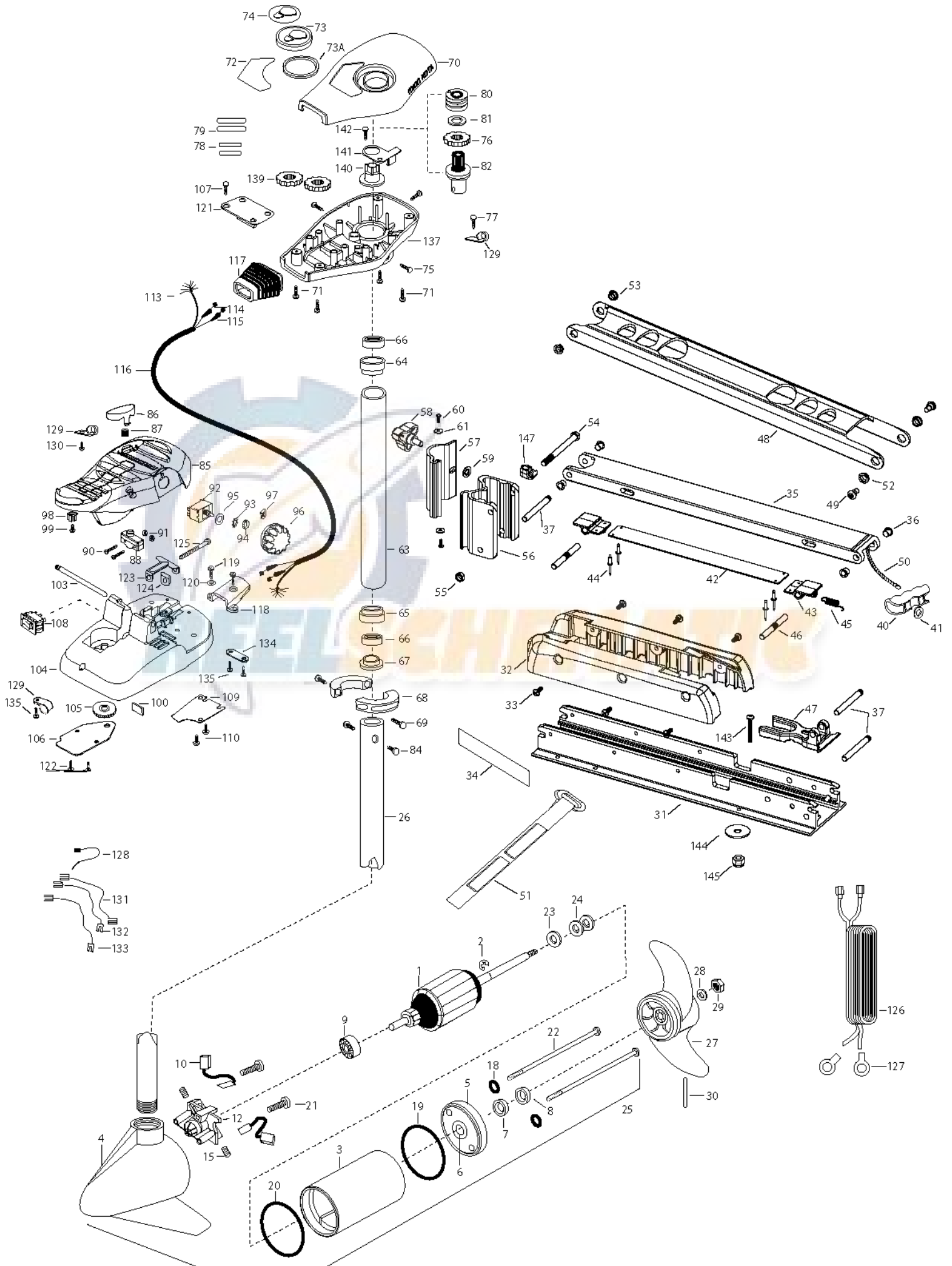


EDGE 70
70 LBS THRUST
24 VOLT 42 AMPS
45"/52" SHAFT

for use with "J" serial numbers
2-year warranty from the date of sale



1	2-100-119	ARM ASSEMBLY 24V 3.625	49	2263510	BOLT-SHOULDER, SS [2 EA.]	100	2266413	TENSION SCREW PLATE FT PEDL
2	788-015	RETAINING RING	50	2251601	ROPE- 44.5" (45" MODEL)	103	2260511	PIN-PIVOT A/T FT PDL
3	2-200-005	HOUSING ASSEMBLY CENTER 3.625 TXT		2251603	ROPE-48" (52" MODEL)	104	2992104	FT PEDAL BASE/PIN ASSEMBLY SONAR
4	2-300-042	HOUSING-ASSEMBLY BRUSH END 3.625 45"	51	2263805	VELCRO STRAP	105	2262301	PULLEY- FOOT PEDAL
	2-300-139	HOUSING-ASSEMBLY BRUSH END 3.625 52"	52	2267302	BUSHING-LOWER 7/16" ID, SS	106	2266401	COVER-PULLEY STAMPING
5	2-400-101	PLAIN END HOUSING ASSEMBLY	53	2267303	BUSHING-UPPER 3/8" ID, SS	107	2223430	SCREW-#8X 3/4 PPH TYPE 25 SS [4.EA]
6	144-049	BEARING- FLANGE [SERVICE ONLY]	54	2263505	BOLT 3/8-16 X 4.25"	108	2254031	SWITCH-MOM/OFF/COM
7	880-003	SEAL	55	2263114	NUT-NYLOCK JAM 3/8-16	109	2266412	SWITCH PLATE, FT PEDAL
8	880-006	SEAL WITH SHIELD	56	2261872	HINGE BASE, FW	110	2332103	SCREW-6-20 X 3/8 THD [2.EA]
9	140-010	BEARING -BALL	57	2261877	HINGE DOOR, FW	113	2261208	WIRE HARNESS, A/T FT. PED
10	188-037	BRUSH ASSEMBLY [2.EA]	58	2260905	HANDLE-SOFT GRIP, L&D	114	2267505	CABLE ASSEMBLY-RIGHT 5'
12	738-036	BRUSH PLATE W/HOLDER 3.625	59	2261728	WASHER-RETAINING 3/8"	115	2267515	CABLE ASSEMBLY-LEFT 5'
15	975-040	SPRING- TORSION [2.EA]	60	2053415	SCREW #8-32 X 3/8" TRI [2 EA.]	116	2265430	CABLE JACKET 5'
18	701-008	O-RING [2. EA]	61	2261732	WASHER #8, NYLON [2 EA.]	117	2265110	BOOT-CONTROL BOX
19	337-036	GASKET	■	2992012	TUBE W/BEARING RACE ASSEMBLY 21"	118	2265115	BOOT-FOOT PEDAL BASE
20	701-081	O-RING		2992016	TUBE W/BEARING RACE ASSEMBLY 24"	119	2372100	SCREW-8-18 X 5/8 THD [2.EA]
21	830-007	SCREW- SELF-THREAD 8-32X1.7 [2.EA]	63	2272069	TUBE OUTER-21" 4 HOLES	120	2261714	WASHER-MAXXUM FT PDL [2.EA]
22	830-008	THRU BOLT 10-32 X 9.205 [2.EA]		2272067	TUBE OUTER -24" 4 HOLES	121	2261901	BRACKET-CONDUIT AT/MAX
23	990-067	WASHER- STEEL THRUST	64	2266260	BEARING RACE	122	2223430	SCREW-8-18 X 3/4" [4.EA]
24	990-070	WASHER- NYLATRON [2.EA]	65	2266220	BEARING RACE-STEEL	123	2263210	BRACKET- CONDUIT ADJUSTMENT
25	2096035	MTR ASSEMBLY 24V 3.625 5SPD 45"	66	2266000	BEARING BALL-STEEL [2.EA]	124	2263104	NYLOCK KEEPER
	2096039	MTR ASSEMBLY 24V 3.625 5SPD 52"	67	2266115	BEARING CONE	125	2263466	SCREW-1/4-20 X 2 STL PPH
26	2032061	TUBE (COMP)W/CSK HOLE 45"	68	2261622	COLLAR HALF-ALUMINUM- [2.EA]	126	2261235	LEADWIRE-BATTERY
	2032067	TUBE (COMP)W/CSK HOLE 52"	69	2263453	SCREW-1/4X20 X 1" SHCS SS [2. A]	127	2020700	TERMINAL RING, 3/8" [2.EA]
■	1378131	PROPELLER KIT	70	2260286	COVER-CTR BOX EDGE/FC BLK	128	2256300	TIE WRAP-5.5" BLACK
27	2091160	PROPELLER W/WEDGE 2	71	2372100	SCREW-8-18 X 5/8 THD [4.EA]	129	2263201	CLAMP WIRE HARNESS MICRO [3 EA.]
28	2151726	WASHER- 5/16 SS	72	2265674	DECAL-COVER EDGE 70/FC	130	2332103	SCREW-6-20 X 3/8 THD
29	2053101	NUT-PROP NYLOC	73	2260150	POINTER DISC TRNSLCNT RED	131	2260301	CONNECTING WIRE -SWITCH
30	2092600	PIN-DRIVE SS	73A	2261733	WASHER-FOAM, INDICATOR	132	2260312	WIRE,BLK W/WHT- 19 1/2
31	2266507	BOWPLATE, FW, LONG, 52"	74	2265800	DECAL-INDICATOR	133	2260322	WIRE,BLK W/BLUE -12"
	2266502	BOWPLATE, FW, STD, 45"	75	2053414	SCREW-8-32 X 1/2 TRI LOBE [3. EA]	134	2263205	LEADWIRE CLAMP
32	2263905	MOTOR REST, BLK.	76	2267800	GEAR-INDICATOR	135	9953104	SCREW-8 X 1/2" SS
33	2303430	SCREW 1/4-20 X 5/8 [6 EA.]	77	2372100	SCREW-8-18 X 5/8 SS	137	2262535	CONTROL BOX-PLASTIC
34	2265667	MOTOR REST DECAL, FW [2 EA.]	78	2375400	SHRINK TUBE-1/4OD X 1-3/4 [2. EA]	139	2267800	GEAR-INDICATOR [2.EA]
■	2991704	BOWMOUNT FW ASSEMBLY, STD	79	2355410	SHRINK TUBE-3/8 OD X 2 [2. EA]	140	2262220	INDICATOR-DRIVE
	2991706	BOWMOUNT FW ASSEMBLY, LONG	80	2232360	PULLEY-CABLE DRUM	141	2261905	BRACKET/INDICATOR
35	2264346	LOWER ARM, FW, LONG	81	2261730	WASHER-NYLON A/T	142	2372100	SCREW-8-18 X 5/8 (SS)
	2264341	LOWER ARM, FW, STD.	82	2996246	BEARING RACE/ PINION ASSEMBLY	■	2994838	BAG ASSEMBLY
36	2266002	NYLINER 3/8" SHAFT [4 EA.]	84	2263410	SCREW-8-32 X 5/16 ZN PL [2.EA]	*143	2263462	SCREW 1/4-20X2 SS [6.EA]
37	2260503	PIVOT PIN [3 EA.]	85	2994496	FOOT PEDAL/PLUG ASSEMBLY AT	*144	2261713	WASHER-1/4 FLAT 18-18 [6.EA]
40	2150400	PULL-GRIP	86	2283700	PUSH-BUTTON FOOT PEDAL W/MAGNET	*145	2263103	NUT- 1/4-20 NYLOC-JAM [6.EA]
41	2151700	WASHER-EYE SHAFT .562 OD	87	2302732	SPRING-LOWER PEDAL SS	147	2262310	GUIDE ROPE
■	2993812	LATCH STRAP ASSEMBLY, LONG, 52"	88	2264040	SWITCH MOMENTARY			
	2993811	LATCH STRAP ASSEMBLY, STD, 45"	90	2262114	SCREW-MOUNTING/SWITCH [2.EA]			
42	2263607	LATCH STRAP, LONG, 50"	91	2233100	NUT-SWITCH MOUNT [2.EA]			
	2263605	LATCH STRAP, STD, 45"	92	2264026	SWITCH-S SPEED			
43	2261902	BRACKET-LATCH [2 EA.]	93	2261701	LOCKWASHER-STAR			
44	2268602	RIVET 1/8" SS [4 EA.]	94	2263105	NUT-HEX			
45	2262709	SPRING-LATCH PIN	95	2261715	SPACER-SWITCH 5 SP MODELS			
46	2260501	LATCH PIN [2 EA.]	96	2280110	KNOB-SPEED CONTROL 5SPD			
47	2261544	YOKE-TUBE	97	2263000	E-RING TRU-ARC			
48	2264267	ARM-UPPER, FW, LONG, 52"	98	2260730	CONNECTOR 1/4 MALE TAB			
	2264262	ARM-UPPER, FW, STD, 45"	99	2332103	SCREW-6-20 X 3/8			

2888460 Seal & Oring Kit

Edge 70 is 24-volt only!

