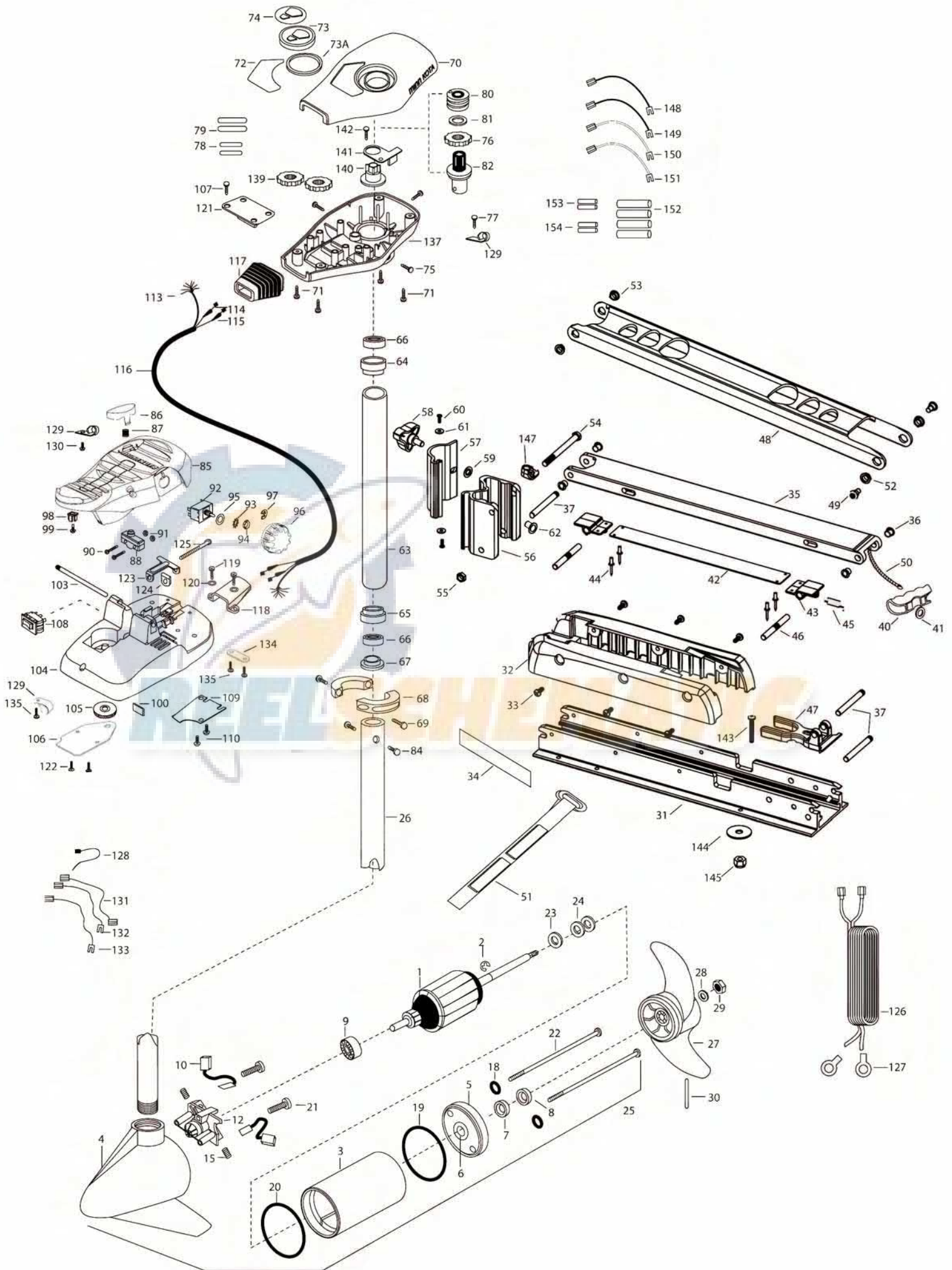


**EDGE 40**  
**40 LBS THRUST**  
**12 VOLT 42 AMPS**  
**36"/42"/45"/50" SHAFT**

for use with "K" serial numbers  
2-year warranty from the date of purchase



1	2-100-201	ARM ASSEMBLY 12V 3.25	48	2264267	ARM-UPPER, FW, LONG, 50"	96	2280110	KNOB-SPEED CONTROL 5SPD
2	788-015	RETAINING RING		2264262	ARM-UPPER, FW, STD, 45"	97	2263000	E-RING TRU-ARC
3	2-200-079	HOUSING ASSEMBLY CENTER 3.25 TXT	49	2263510	BOLT-SHOULDER, SS [2 EA.]	98	2260730	CONNECTOR 1/4 MALE TAB
4	2-300-134	HOUSING-ASSEMBLY BRUSH END 3.25 45"-50"	50	2251601	ROPE- 44.5" (36"/45" MODELS)	99	2332103	SCREW-6-20 X 3/8
	2-300-132	HOUSING-ASSEMBLY BRUSH END 3.25 36"		2251603	ROPE- 48" (50" MODEL)	100	2266413	TENSION SCREW PLATE FT PEDL
5	2-400-187	PLAIN END HOUSING ASSEMBLY	51	2263805	VELCRO STRAP	103	2260511	PIN-PIVOT A/T FT PDL
6	144-049	BEARING- FLANGE [SERVICE ONLY]	52	2267302	BUSHING-LOWER 7/16" ID, SS	104	2992104	FT PEDAL BASE/PIN ASSEMBLY SONAR
7	880-003	SEAL	53	2267303	BUSHING-UPPER 3/8" ID, SS	105	2262301	PULLEY- FOOT PEDAL
8	880-006	SEAL WITH SHIELD	54	2263505	BOLT 3/8-16 X 4.25"	106	2266401	COVER-PULLEY STAMPING
9	140-010	BEARING -BALL	55	2263114	NUT-NYLOCK JAM 3/8-16	107	2223430	SCREW-#8X 3/4 PPH TYPE 25 SS [4.EA]
10	188-052	BRUSH ASSEMBLY [2.EA ]	56	2261872	HINGE BASE, FW	108	2254031	SWITCH-MOM/OFF/COM
12	738-030	BRUSH PLATE W/HOLDER 3.25	57	2261877	HINGE DOOR, FW	109	2266412	SWITCH PLATE, FT PEDAL
15	975-032	SPRING- COMPRESSION [2.EA]	58	2260905	HANDLE-SOFT GRIP, L&D	110	2332103	SCREW-6-20 X 3/8 THD [2.EA]
18	701-007	O-RING [2. EA]	59	2261728	WASHER-RETAINING 3/8"	113	2261208	WIRE HARNESS, A/T FT. PED
19	701-039	O-RING MK406460	60	2053415	SCREW #8-32 X 3/8" TRI [2 EA.]	114	2267505	CABLE ASSEMBLY-RIGHT 5'
20	701-041	O-RING	61	2261732	WASHER #8, NYLON [2 EA.]	115	2267515	CABLE ASSEMBLY-LEFT 5'
21	830-001	SCREW- SELF-THREAD 8-32X1.7 [2.EA ]	62	2264703	INSERT - THREADED	116	2265430	CABLE JACKET 5'
22	830-078	THRU BOLT 8-32 X 8.96 [2.EA]	■	2992015	TUBE W/BEARING RACE ASSEMBLY 18"	117	2265110	BOOT-CONTROL BOX
23	990-067	WASHER- STEEL THRUST		2992012	TUBE W/BEARING RACE ASSEMBLY 21"	118	2265115	BOOT-FOOT PEDAL BASE
24	990-070	WASHER- NYLATRON [2.EA]		2992016	TUBE W/BEARING RACE ASSEMBLY 24"	119	2372100	SCREW-8-18 X 5/8 THD [2.EA]
25	2068252	MTR ASSEMBLY 12V 3.25 5SPD 45"/50"	63	2272066	TUBE OUTER-18" 4 HOLES	120	2261714	WASHER-MAXXUM FT PDL [2.EA]
	2068250	MTR ASSEMBLY 12V 3.25 5SPD 36"		2272069	TUBE OUTER-21" 4 HOLES	121	2261901	BRACKET-CONDUIT AT/MAX
26	2032062	TUBE (COMP)W/CSK HOLE 36"		2272067	TUBE OUTER -24" 4 HOLES	122	2223430	SCREW-8-18 X 3/4" [4.EA]
	2032063	TUBE (COMP)W/CSK HOLE 42"	64	2266260	BEARING RACE	123	2263210	BRACKET- CONDUIT ADJUSTMENT
	2032061	TUBE (COMP)W/CSK HOLE 45"	65	2266220	BEARING RACE-STEEL	124	2263104	NYLOCK KEEPER
	2032059	TUBE (COMP)W/CSK HOLE 50"	66	2266000	BEARING BALL-STEEL [2.EA]	125	2263466	SCREW-1/4-20 X 2 STL PPH
■	1378121	PROPELLER KIT (INCLUDES 27-30)	67	2266115	BEARING CONE	126	2261235	LEADWIRE-BATTERY
27	2061122	PROPELLER	68	2261622	COLLAR HALF-ALUMINUM- [2.EA]	127	2020700	TERMINAL RING, 3/8" [2.EA]
28	2151726	WASHER- 5/16 SS	69	2263453	SCREW-1/4X20 X 1" SHCS SS [2. A]	128	2256300	TIE WRAP-5.5" BLACK
29	2053101	NUT-PROP NYLOC	70	2260286	COVER-CTR BOX EDGE/FC BLK	129	2263201	CLAMP WIRE HARNESS MICRO [3 EA.]
30	2092600	PIN-DRIVE SS	71	2372100	SCREW-8-18 X 5/8 THD [4.EA]	130	2332103	SCREW-6-20 X 3/8 THD
31	2266507	BOWPLATE, FW, LONG, 50"	72	2265671	DECAL-COVER EDGE 40/FC	131	2260301	CONNECTING WIRE -SWITCH
	2266502	BOWPLATE, FW, STD, 45"	73	2260150	POINTER DISC TRNSLCNT RED	132	2260312	WIRE,BLK W/WHT- 19 1/2
32	2263905	MOTOR REST, BLK.	73A	2261733	WASHER-FOAM, INDICATOR	133	2260322	WIRE,BLK W/BLUE -12"
33	2303430	SCREW 1/4-20 X 5/8 [6 EA.]	74	2265800	DECAL-INDICATOR	134	2263205	LEADWIRE CLAMP
34	2265667	MOTOR REST DECAL, FW [2 EA.]	75	2053414	SCREW-8-32 X 1/2 TRI LOBE [3. EA]	135	9953104	SCREW-8 X 1/2" SS
■	2991702	BOWMOUNT FW ASSEMBLY, LONG	76	2267800	GEAR-INDICATOR	137	2262535	CONTROL BOX-PLASTIC
	2991700	BOWMOUNT FW ASSEMBLY, STD.	77	2372100	SCREW-8-18 X 5/8 SS	139	2267800	GEAR-INDICATOR [2.EA]
35	2264347	LOWER ARM, FW, LONG	78	2375400	SHRINK TUBE-1/4OD X 1-3/4 [2. EA]	140	2262220	INDICATOR-DRIVE
	2264342	LOWER ARM, FW, STD.	79	2355410	SHRINK TUBE-3/8 OD X 2 [2. EA]	141	2261905	BRACKET/INDICATOR
36	2266002	NYLINER 3/8" SHAFT [4 EA.]	80	2232360	PULLEY-CABLE DRUM	142	2372100	SCREW-8-18 X 5/8 (SS)
37	2260503	PIVOT PIN [3 EA.]	81	2261730	WASHER-NYLON A/T	■	2994838	BAG ASSEMBLY
40	2150400	PULL-GRIP	82	2996246	BEARING RACE/ PINION ASSEMBLY	*143	2263462	SCREW 1/4-20X2 SS [6.EA]
41	2151700	WASHER-EYE SHAFT .562 OD	84	2263410	SCREW-8-32 X 5/16 ZN PL [2.EA]	*144	2261713	WASHER-1/4 FLAT 18-18 [6.EA]
■	2993812	LATCH STRAP ASSEMBLY, LONG, 50"	85	2994496	FOOT PEDAL/PLUG ASSEMBLY AT	*145	2263103	NUT- 1/4-20 NYLOC-JAM [6.EA]
	2993811	LATCH STRAP ASSEMBLY, STD, 45"	86	2283700	PUSH-BUTTON FOOT PEDAL	147	2262310	GUIDE ROPE
42	2263607	LATCH STRAP, LONG, 50"	87	2302732	SPRING-LOWER PEDAL SS	148	2030316	WIRE EXT. 10 GA. 18" BLACK
	2263605	LATCH STRAP, STD, 45"	88	2264040	SWITCH MOMENTARY	149	2030317	WIRE EXT. 10 GA. 18" RED
43	2261902	BRACKET-LATCH [2 EA.]	90	2262114	SCREW-MOUNTING/SWITCH [2.EA]	150	2030312	WIRE EXT. 16 GA. 18" WHITE
44	2268602	RIVET 1/8" SS [4 EA.]	91	2233100	NUT-SWITCH MOUNT [2.EA]	151	2030313	WIRE EXT. 16 GA. 18" YELLOW
45	2262709	SPRING-LATCH PIN	92	2264026	SWITCH-S SPEED	152	2375400	SHRINK TUBING 1/4" X 1" [4 EA.]
46	2260501	LATCH PIN [2 EA.]	93	2261701	LOCKWASHER-STAR	153	2030710	BUTT CONNECTOR LARGE [2 EA.]
47	2261544	YOKE-TUBE	94	2263105	NUT-HEX	154	2030711	BUTT CONNECTOR SMALL [2 EA.]
			95	2261715	SPACER-SWITCH 5 SP MODELS			

Edge 40 is 12-volt only!

