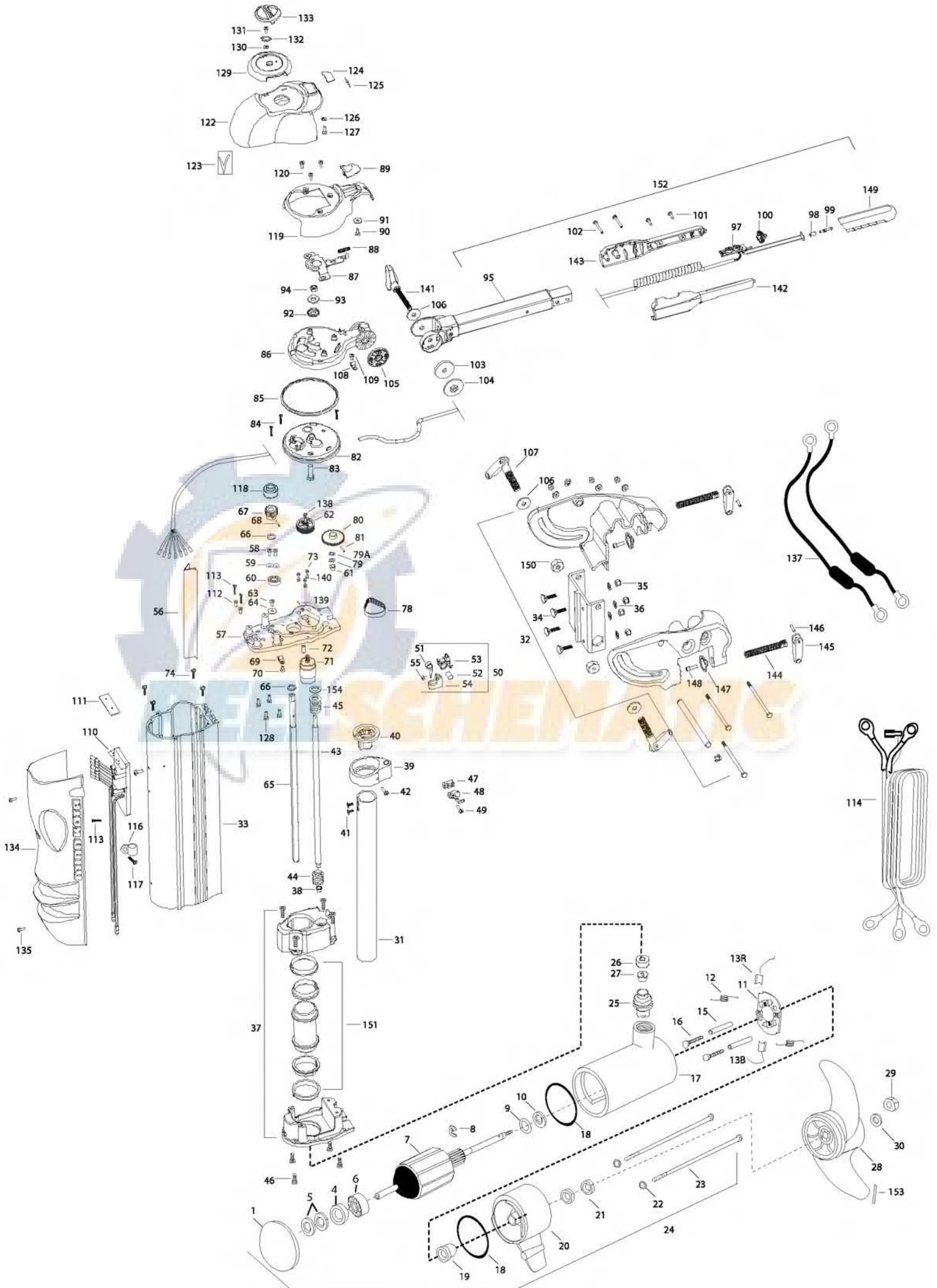


VANTAGE 80  
80 LBS THRUST  
24 VOLT 56 AMPS

for use with "K" serial numbers  
2-year warranty from the date of purchase



|     |           |  |      |         |   |      |         |                                      |
|-----|-----------|--|------|---------|---|------|---------|--------------------------------------|
| 1   | 421-276   | PLAIN END HOUSING ASSEMBLY             | 58   | 2053414 | SCREW-#8-32 X 1/2 TRI-LOBE[2.EA]        | *107 | 2050922 | HANDLE TENSION, SHORT                |
| 4   | 990-045   | THRUST SPACER                          | 59   | 2051717 | WASHER-#8 SAE FLAT ZNK PLT [2.EA]       | 108  | 2052510 | CABLE CLAMP, 3/16" VANTAGE [2.EA]    |
| 5   | 992-010   | SPRING WASHER [2.EA]                   | *60  | 2057306 | BEARING-BALL (VANTAGE)                  | 109  | 2053415 | SCREW-#8-32 X 3/8" TRI-LB[3.EA]      |
| 6   | 140-010   | BALL BEARING                           | *61  | 2057302 | BEARING-UPPER, LIFT SCREW               | *110 | 2774041 | CNTRL BRD ASSY 24/36V W/PAD INCL.111 |
| 7   | 2-100-214 | ARMATURE ASSEMBLY 24V 4"               | *62  | 2052630 | PIN, CLUSTER GEAR                       | *111 | 2315105 | INSULATING PAD                       |
| 8   | 788-040   | RETAINING RING                         | 63   | 2053415 | SCREW-#8-32 X 3/8 TRI-LOBE P            | 112  | 2261712 | SHOULDER WASHER [2.EA]               |
| 9   | 990-051   | WASHER-THRUST, STEEL                   | 64   | 2051716 | WASHER-FENDER #10                       | 113  | 2053407 | SCREW-#8-32 X .75 PPH[3.EA]          |
| 10  | 990-052   | WASHER- NYLATRON                       | 65   | 2052001 | SHAFT-STEERING, VANTAGE                 | 114  | 2051220 | LEADWIRE,24/36V,3 CONDUCT            |
| ■   | 2-600-144 | BRUSH/WIRE/PLATE ASSEMBLY INCL.11-13   | 66   | 2051706 | WASHER-SPRING SUPPORT[2.EA]             | 116  | 2052512 | CABLE CLAMP, 1/2" VANTAGE            |
| *11 | 738-004   | BRUSH PLATE 4" TERMINAL                | 67   | 2052205 | GEAR, STEERING TUBE MACHINED            | 117  | 2053415 | SCREW-#8-32 X 3/8" TRI-LOBE P        |
| *12 | 975-041   | SPRING -TORSION [2.EA]                 | *68  | 2052615 | PIN-DRIV-LOK 1/8 X 1 1/8                | 118  | 2052210 | ROLLER-STEERING SHAFT                |
| 13  | 188-094   | BRUSH                                  | 69   | 2052510 | CABLE CLAMP, 3/16" VANTAGE              | ■    | 2880102 | CONTROL HEAD COVER LATCH KIT         |
| 15  | 973-025   | SPACER -BRUSH PLATE [2.EA]             | 70   | 2053415 | SCREW-#8-32 X 3/8 TRI-LOBE P            |      |         | INCL. 89,90,91,119                   |
| 16  | 830-027   | SCREW -SELF THREADED 10-32 X 2" [2.EA] | 71   | 2777812 | MOTOR-LIFT (12,24,36V)                  | 119  | 2050200 | COVER-CONTROL HEAD                   |
| 17  | 2-200-160 | CENTER HOUSING FIELD ASSEMBLY          | 72   | 2058411 | TENSIONER-BELT (VANTAGE)                | 120  | 2053415 | SCREW-#8-32 X 3/8" TRI-LOBE[3.EA]    |
| 18  | 701-043   | O-RING ( 2 REQ'D)                      | 73   | 2053422 | SCREW - 3MM                             | 121  | 2012100 | SCREW-8-18 X 5/8" THD CUT[3.EA]      |
| 19  | 144-017   | BEARING -FLANGE (SERVICE ONLY)         | 74   | 2053413 | SCREW-10-16X1' TYPE AB,HEX[4.EA]        | 122  | 2050211 | SHROUD-CONTROL HEAD                  |
| 20  | 2-300-160 | BRUSH END HOUSING ASSEMBLY             | ■    | 2882201 | CLUSTER GEAR / FLANGE PULLEY KIT        | 123  | 2055612 | DECAL-SHROUD (VANTAGE)[2.EA]         |
| 21  | 880-025   | SEAL [2.EA]                            |      |         | INCL. 75,76,77                          | 124  | 2055602 | DECAL-COVER, 36V                     |
| 22  | 701-009   | O-RING -THRU BOLT [2.EA]               | *75  | 2770428 | PULLEY/PINION GEAR ASSEMBLY             | 125  | 2055610 | DECAL-COVER, LED                     |
| 23  | 830-094   | THRU BOLT 12-24 X10.31[2.EA]           | *76  | 2058405 | FLANGE-PULLEY (VANTAGE)                 | 126  | 2051712 | WASHER- .152 ID, .50 OD, .06         |
| 24  | 2316271   | MOTOR ASSEMBLY, 4", 24V                | *77  | 2053418 | SCREW 4-40 X 1/4 PPH[2.EA]              | 127  | 2302100 | SCREW-6-20 X 1/2" THD CUT            |
| 25  | 979-015   | STRAIN RELIEF - BODY                   | 78   | 2050800 | BELT-DRIVE (VANTAGE)                    | 128  | 2012100 | SCREW-8-18 X 5/8" THD CUT(4REQ'D)    |
| 26  | 9950339   | CAP - STRAIN RELIEF                    | 79   | 2051705 | WASHER-NYLON ID.312 X OD.               | 129  | 2050110 | KNOB-POINTER, VANTAGE                |
| 27  | 2382900   | GROMMENT- STRAIN RELIEF                | 79A  | 2051703 | WASHER-THRUST ID.315, OD.562            | 130  | 2051717 | WASHER- #8 SAE FLAT ZNK PLT          |
| 28  | 2331160   | PROPELLER (W.WEDGE 2) MAX 101          | ■    | 2882200 | GEAR LIFT/PIN KIT INCL.80,62            | 131  | 2332101 | SCREW-8-32 X 1/2" SS                 |
| 29  | 2093101   | NUT-PROP NYLOC (LARGE) MAX 101         | *80  | 2990426 | LIFT GEAR ASSEMBLY                      | 132  | 2371715 | LOCKWASHER-STAR #8 ZINC              |
| 30  | 2091701   | WASHER-PROP (LARGE) MAX 101            | 81   | 2052620 | PIN-DRIV-LOK 1/8 X 5/8"                 | 133  | 2056700 | PLUG, POINTER, VANTAGE               |
| 31  | 2772010   | TUBE-MOTOR, 1 3/4" KIT W/TEMPLATE      | 82   | 2056520 | CAP-LOWER, GEAR HOUSING                 | 134  | 2050220 | SHIELD-EXTRUSION, VANTAGE            |
| 32  | 2991822   | TRANSOM BRACKET ASSEMBLY 36V           | 83   | 2383500 | BOLT-3/8-16 X 1.25                      | 135  | 2053414 | SCREW-#8-32 X 1/2" TRI-LOBE[2.EA]    |
| 33  | 2056505   | HOUSING EXTRUSION                      | 84   | 2053402 | SCREW-10-24 X 1" TRI-LOBE [3.EA]        | 136  | 2055611 | DECAL-SHIELD (VANTAGE)[3.EA]         |
| 34  | 2053511   | BOLT-CARRIAGE 5/16-18 1"[4.EA]         | 85   | 2054600 | O-RING, GEAR HOUSING                    | 137  | 2998200 | CIRCUIT BRKR ASSEMBLY 36V [2.EA]     |
| 35  | 2151726   | WASHER-5/16 STD (S/S)[4.EA]            | 86   | 2056510 | CAP-UPPER, GEAR HOUSING                 | 138  | 2051732 | WASHER .315 X .562                   |
| 36  | 2053103   | NUT, 5/16-18 NYLOC [4.EA]              | 87   | 2057200 | LATCH (VANTAGE)                         | 139  | 2053420 | SET SCREW #8-32                      |
| 37  | 2770420   | LOWER SUPPORT CAGE ASSEMBLY            | 88   | 2052711 | SPRING, LATCH RETURN                    | 140  | 2051710 | LOCKWASHER 3MM                       |
| 38  | 2057302   | BEARING-UPPER, LIFT SCREW              | 89   | 2050102 | KNOB-LATCH (VANTAGE)                    | 141  | 2050921 | HANDLE TENSION - LONG                |
| ■   | 2881510   | YOKE/BEARING RACE KIT INCL.39,40,42    | 90   | 2353401 | SCREW-10-16 X 1/2 STALGD                | ■    | 2880910 | HANDLE L/R KIT                       |
| *39 | 2051510   | YOKE-LIFT SCREW                        | 91   | 2051716 | WASHER-FENDER #10                       |      |         | INCL. 100,101,102,142,143,150        |
| *40 | 2056200   | BEARING RACE-YOKE                      | 92   | 2151730 | WASHER-CUP (HINGE BRACKET)              | *142 | 2050916 | HANDLE SIDE L                        |
| 41  | 2053401   | SCREW-10 X 1/2,TYPE 25.[2.EA]          | 93   | 2051737 | WASHER-3/8 FLAT (ZINC)                  | *143 | 2050911 | HANDLE SIDE R                        |
| 42  | 2353401   | SCREW-10-16 X 1/2 STALGD               | 94   | 2053107 | NUT-3/8-16, TOPLOCK                     | ■    | 2880925 | HANDLE/CLAMP SCREW KIT               |
| 43  | 2053400   | SCREW-LIFT, 1/2-10 ACME                | 96   | 2990921 | HANDLE ASSEMBLY, VANTAGE                |      |         | INCL. 2 EA OF 144-148                |
| 44  | 2052707   | SPRING-COIL,SOFT STOP                  | ■    | 2884106 | HANDLE CTRL BOARD/GRIP KIT INCL. 97,149 | *144 | 2051300 | SCREW-CLAMP 5/8X4                    |
| 45  | 2770429   | COIL SPRING/WASHER ASSEMBLY KIT        | *97  | 2994005 | CTRL BOARD ASSEMBLY-HANDLE              | *145 | 2050925 | HANDLE-CLAMP SCREW                   |
| 46  | 2053413   | SCREW-10-16X1' TYPE AB,HEX(4REQ'D)     | 98   | 2055115 | BUTTON SWITCH ACTUATOR                  | *146 | 2052625 | PIN-COILED SPRING                    |
| ■   | 2883200   | WIRE CLAMP KIT INCL. 47,48,49          | ■    | 2883701 | PLUNGER/GRIP KIT INCL. 99,149           | *147 | 2011710 | WASHER-CLAMP SCREW                   |
| *47 | 2053200   | WIRE CLAMP, LEFTHAND                   | *99  | 2053700 | PLUNGER, ON/OFF                         | *148 | 2263402 | SCREW- 1/4-20X3/4"                   |
| *48 | 2053205   | WIRE CLAMP, RIGHTHAND                  | 100  | 2050111 | KNOB-SPEED CONTROL                      | 149  | 2880424 | GRIP KIT                             |
| *49 | 2053417   | SCREW-10-16X3/4 TYPE BT,PPH            | 101  | 2012100 | SCREW-8-18 X 5/8" THD CUT[2.EA]         | *150 | 2053105 | NUT- HEX                             |
| 50  | 2770400   | TAPE SPRING ASSEMBLY INCL. 51-55       | 102  | 2053412 | SCREW 8 X 1.5"TYPE 25 PPH[2.EA]         | 151  | 2881500 | TUBE/SLEEVE/BUSHING KIT              |
| 51  | 2052705   | SPRING, CONSTANT FORCE                 | ■    | 2880921 | HANDLE TENSION KNOB KIT                 | 152  | 2990950 | HANDLE/CTRL BOARD ASSEMBLY           |
| 52  | 2052610   | PIN-PIVOT 7/16" O.D.                   |      |         | INCL. 103,104,105,141                   | 153  | 2262658 | PROP PIN                             |
| 53  | 2051920   | BRACKET-SPRING                         | *103 | 2051736 | WASHER-URETHN,ID.4 X OD 1               | 154  | 2340610 | CONNECTOR CABLE                      |
| 54  | 2052305   | WIRE GUIDE (VANTAGE)                   | *104 | 2053115 | NUT-WASHER, HANDLE ASSEMBLY             |      |         |                                      |
| 55  | 2053418   | SCREW-#4-40X1/4 TYPE F,PPH             | *105 | 2050015 | RACHET-DISK, HANDLE ASSEMBLY            |      |         |                                      |
| 56  | 2050225   | WIRE SHIELD                            | ■    | 2880920 | BRACKET TENSION HANDLE KIT              |      |         |                                      |
| ■   | 2770405   | TOP PLATE ASSEMBLY INCL.57,60,61,68    |      |         | INCL. 106,107,150                       |      |         |                                      |
| *57 | 2051927   | TOP PLATE, VANTAGE                     | *106 | 2051737 | WASHER-FLAT,ID.406 X OD.8               |      |         |                                      |

2889460 Seal & Oring Kit

# VANTAGE 80 24 VOLTS ONLY

