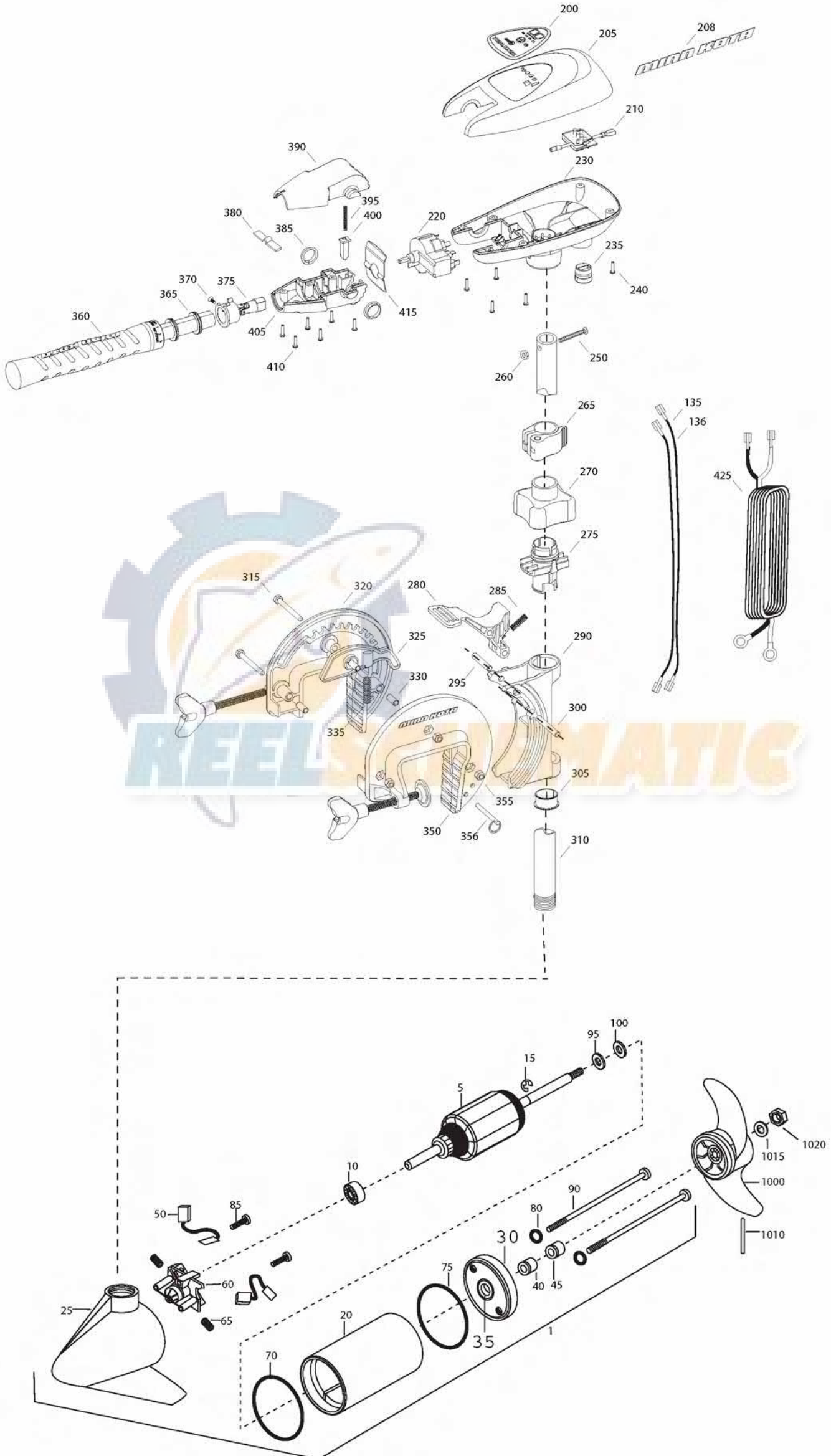


RT 40 SC/t
40 LBS THRUST
12 VOLT 42 AMPS
30" SHAFT

for use with "K" serial numbers
2-year warranty from the date of purchase



Item	P/N	Description	Qty	Item	P/N	Description	Qty	Item	P/N	Description	Qty	Item	P/N	Description
1	2069254	12V Motor SW	1	■ 2991797	Bracket assy, Composite [270-356]	1	■ 1378121	Propeller kit						
5	2-100-202	Armature assembly	1	270 2060100	Knob, steering tension, soft	1	1000 2061122	Propeller	1					
10	140-010	Bearing	1	275 2068400	Collet	1	1010 2092600	Drive pin, small	1					
15	788-015	Retaining ring	1	280 2064200	Lock arm	1	1015 2151726	Washer, prop, small	1					
20	2-200-379	Center housing assembly	1	285 2062701	Spring, lock arm	1	1020 2198400	Nut, nylock, prop, Anode	1					
25	2-300-332	Brush end housing assembly	1	290 2061821	Hinge	1								
30	2-400-187	Plain end housing assembly	1	295 2062603	Pin, lock, ss	1								
35	144-049	Flange bearing	1	300 2062603	Pin, lock, ss	1								
40	880-003	Seal	1	305 2037301	Bushing, hinge	1								
45	880-006	Seal with shield	1	310 2032039	Tube 30"	1								
50	188-052	Brush	2	315 2063501	Bolt 1/4-20 x 2 3/8", ss	3								
55	N/A			320 2771950	Bracket, right, FW	1								
60	738-030	Brush plate assembly	1	325 2067905	Cam deactivator	1								
65	975-032	Brush spring	2	330 2067306	Bushing, dowel 1/4 x 1/2	3								
70	701-041	O-ring, motor, front	1	335 2062700	Spring, cam deactivator	1								
75	701-039	O-ring, motor, rear	1	■ 2881380	Clamp screw kit	2 per kit								
80	701-007	O-ring, thru-bolt	2	350 2771955	Bracket, left, FW	1								
85	830-001	Screw, 8-32	2	355 2263103	Nut, 1/4-20, nylock, ss	3								
90	830-078	Thru-bolt	2	356 2062604	Pin, stop	1								
95	990-067	Washer, steel	2											
100	990-070	Washer, nylatron	2	■ 2990956	Handle assy, 5SPD [360-410]	1								
135	640-001	Leadwire, black	1	360 2990451	Grip/handle assy, 5SPD [360-375]	1								
136	640-111	Leadwire, red	1	365 2060015	Bearing, handle	2								
■	2883460	Seal and O-ring Kit		370 2063405	Screw, #6 PFH SS	1								
				375 2884091	Yoke / spider assy, 5SPD	1								
200	2095600	Decal, c-box cover	1	380 2302742	Spring, detent, off	1								
205	2060296	C-box cover	1	385 2060005	Bearing, handle pivot	2								
208	2285666	Decal - MinnKota	2	390 2060900	Handle pivot, top	1								
210	2074080	Battery meter, 12v SW	1	395 2302745	Spring, release button	1								
220	2064023	Switch 5 speed	1	400 2063700	Button, release	1								
230	2062506	Control box, 5 SPD, SW	1	405 2060905	Handle pivot, bottom	1								
235	2062905	Strain relief	1	410 2303412	Screw, #6 x 5/8 SS	6								
240	2303412	Screw, #6 x 5/8 SS	6											
250	2263406	Screw, #10-24 x 2 SS	1	415 2062715	Spring, handle pivot	1								
260	2333101	Nut, 10-24, nylock, SS	1	425 2992524	Leadwire assy, includes [235]	1								
265	2991521	Cam lock/depth collar assy	1											



Riptide 40 is 12-volt only!

THIS IS A UNIVERSAL MULTI-VOLTAGE DIAGRAM. DOUBLE CHECK YOUR MOTORS VOLTAGE FOR PROPER CONNECTIONS

FIVE SPEED SWITCH
INTERRUPTEUR A CING VITESSES

