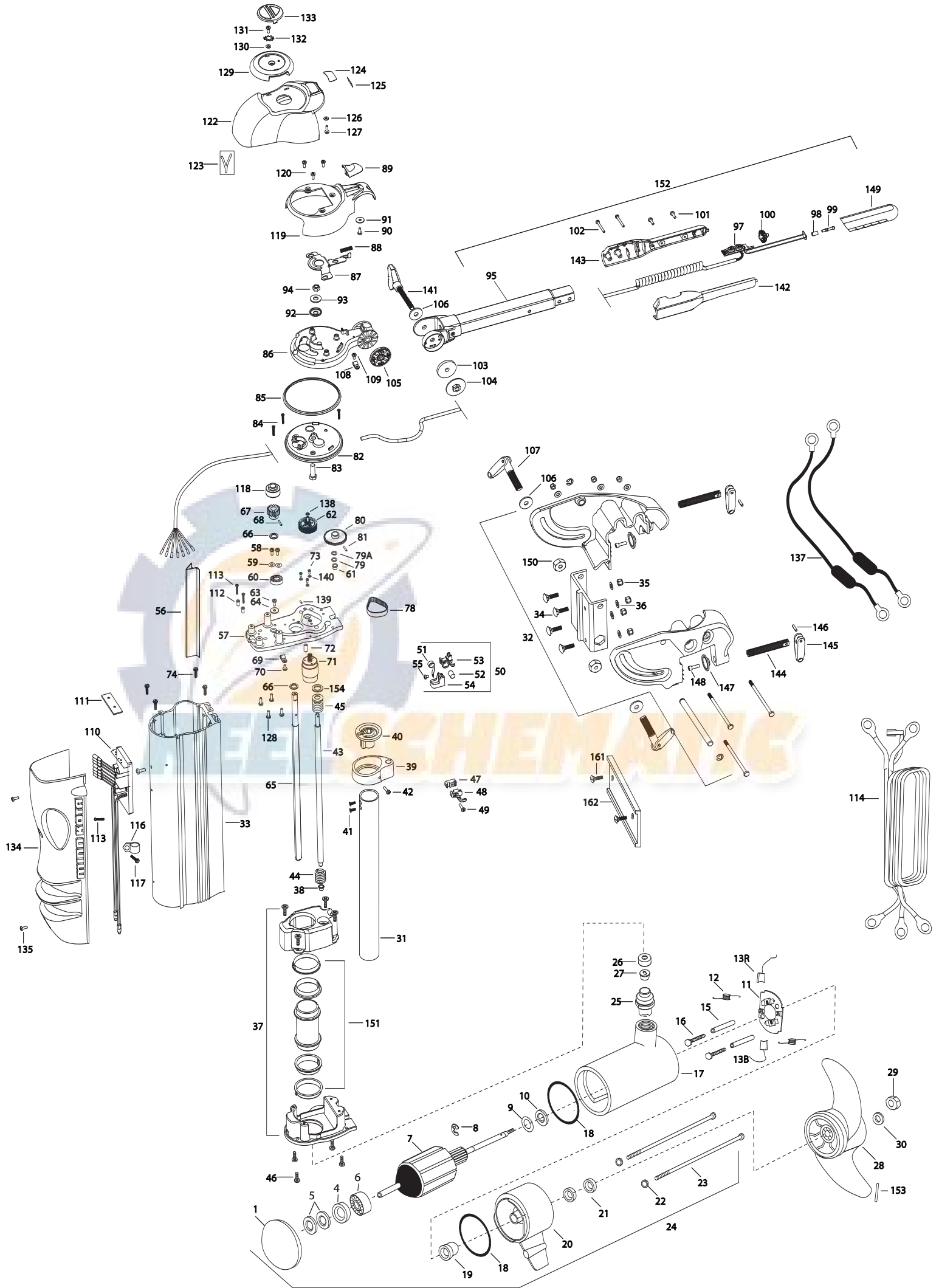


VANTAGE 101
101 LBS THRUST
36 VOLT 46 AMPS

for use with "L" serial numbers
2-year warranty



1	421-276	PLAIN END HOUSING ASSEMBLY	■	2770405	TOP PLATE ASSEMBLY INCL.57,60,61,68	INCL. 106,107,150
4	990-045	THRUST SPACER	*57	2051927	TOP PLATE, VANTAGE	*106 2051737 WASHER-FLAT,ID.406 X OD.8
5	992-010	SPRING WASHER [2.EA]	58	2053414	SCREW-#8-32 X 1/2 TRI-LOBE[2.EA]	*107 2050922 HANDLE, TENSION, SHORT
6	140-010	BALL BEARING	59	2051717	WASHER-#8 SAE FLAT ZNK PLT [2.EA]	108 2052510 CABLE CLAMP, 3/16" VANTAGE [2.EA]
7	2-100-216	ARMATURE ASSEMBLY	*60	2057306	BEARING-BALL (VANTAGE)	109 2053415 SCREW-#8-32 X 3/8" TRI-LB[3.EA]
8	788-040	RETAINING RING	*61	2057302	BEARING-UPPER, LIFT SCREW	*110 2774041 CNTRL BRD ASSY 24/36V W/PAD INCL.111
9	990-051	WASHER-THRUST, STEEL	*62	2052630	PIN, CLUSTER GEAR	*111 2315105 INSULATING PAD
10	990-052	WASHER- NYLATRON	63	2053415	SCREW-#8-32 X 3/8 TRI-LOBE P	112 2261712 SHOULDER WASHER [2.EA]
■	2-600-144	BRUSH/WIRE/PLATE ASSEMBLY INCL.11-13	64	2051716	WASHER-FENDER #10	113 2053407 SCREW-#8-32 X .75 PPH[3.EA]
*11	738-004	BRUSH PLATE 4" TERMINAL	65	2052001	SHAFT-STEERING, VANTAGE	114 2051220 LEADWIRE,24/36V,3 CONDUCT
*12	975-041	SPRING -TORSION [2.EA]	66	2051706	WASHER-SPRING SUPPORT[2.EA]	116 2052512 CABLE CLAMP, 1/2" VANTAGE
13	188-094	BRUSH	67	2052205	GEAR, STEERING TUBE MACHINED	117 2053415 SCREW-#8-32 X 3/8" TRI-LOBE P
13	188-094	BRUSH	*68	2052615	PIN-DRIV-LOK 1/8 X 1 1/8	118 2052210 ROLLER-STEERING SHAFT
15	973-025	SPACER -BRUSH PLATE [2.EA]	69	2052510	CABLE CLAMP, 3/16" VANTAGE	■ 2880102 CONTROL HEAD COVER LATCH KIT
16	830-027	SCREW -SELF THREADED 10-32 X 2" [2.EA]	70	2053415	SCREW-#8-32 X 3/8 TRI-LOBE P	INCL. 89,90,91,119
17	431-110	HOUSING ASSEMBLY- CENTER	71	2777812	MOTOR-LIFT (12,24,36V)	119 2050200 COVER-CONTROL HEAD
18	701-043	O-RING (2 REQ'D)	72	2058411	TENSIONER-BELT (VANTAGE)	120 2053415 SCREW-#8-32 X 3/8" TRI-LOBE[3.EA]
19	144-017	BEARING -FLANGE	73	2053422	SCREW - 3MM	121 2012100 SCREW-8-18 X 5/8" THD CUT[3.EA]
20	2-300-160	BRUSH END HOUSING ASSEMBLY	74	2053413	SCREW-10-16X1' TYPE AB,HEX[4.EA]	122 2050211 SHROUD-CONTROL HEAD
21	880-025	SEAL [2.EA]	■	2882201	CLUSTER GEAR / FLANGE PULLEY KIT	123 2055612 DECAL-SHROUD (VANTAGE)[2.EA]
22	701-009	O-RING -THRU BOLT [2.EA]			INCL. 75,76,77	124 2055602 DECAL-COVER, 36V
■	2889460	SEAL & ORING KIT INCL. 18, 21, & 22	*75	2770428	PULLEY/PINION GEAR ASSEMBLY	125 2055610 DECAL-COVER, LED
23	830-096	THRU BOLT 12-24 X 11.56" SS [2.EA]	*76	2058405	FLANGE-PULLEY (VANTAGE)	126 2051712 WASHER- .152 ID, .50 OD, .06
24	2316261	MOTOR ASSEMBLY, 4", 36V (ITEMS 1-27)	*77	2053418	SCREW 4-40 X 1/4 PPH[2.EA]	127 2302100 SCREW-6-20 X 1/2" THD CUT
25	979-015	STRAIN RELIEF - BODY	78	2050800	BELT-DRIVE (VANTAGE)	128 2012100 SCREW-8-18 X 5/8" THD CUT(4REQ'D)
26	9950339	CAP - STRAIN RELIEF	79	2051705	WASHER-NYLON ID.312 X OD.	129 2050110 KNOB-POINTER, VANTAGE
27	2382900	GROMMENT- STRAIN RELIEF	79A	2051703	WASHER-THRUST ID.315, OD.562	130 2051717 WASHER- #8 SAE FLAT ZNK PLT
28	2331160	PROPELLER (W.WEDGE 2) MAX 101	■	2882200	GEAR LIFT/PIN KIT INCL.80,62	131 2332101 SCREW-8-32 X 1/2" SS
29	2093101	NUT-PROP NYLOC (LARGE) MAX 101	*80	2990426	LIFT GEAR ASSEMBLY	132 2371715 LOCKWASHER-STAR #8 ZINC
30	2091701	WASHER-PROP (LARGE) MAX 101	81	2052620	PIN-DRIV-LOK 1/8 X 5/8"	133 2056700 PLUG, POINTER, VANTAGE
31	2772010	TUBE-MOTOR, 1 3/4" KIT W/TEMPLEATE	82	2056520	CAP-LOWER, GEAR HOUSING	134 2050220 SHIELD-EXTRUSION, VANTAGE
32	2991822	TRANSOM BRACKET ASSEMBLY 36V	83	2383500	BOLT-3/8-16 X 1.25	135 2053414 SCREW-#8-32 X 1/2" TRI-LOBE[2.EA]
33	2056505	HOUSING EXTRUSION	84	2053402	SCREW-10-24 X 1" TRI-LOBE [3.EA]	136 2055611 DECAL-SHIELD (VANTAGE)[2.EA]
34	2053511	BOLT-CARRIAGE 5/16-18 1"[4.EA]	85	2054600	O-RING, GEAR HOUSING	137 2998200 CIRCUIT BRKR ASSEMBLY 36V [2.EA]
35	2151726	WASHER-5/16 STD (S/S)[4.EA]	86	2056510	CAP-UPPER, GEAR HOUSING	138 2051732 WASHER .315 X .562
36	2053103	NUT, 5/16-18 NYLOC [4.EA]	87	2057200	LATCH (VANTAGE)	139 2053420 SET SCREW #8-32
37	2770420	LOWER SUPPORT CAGE ASSEMBLY	88	2052711	SPRING, LATCH RETURN	140 2051710 LOCKWASHER 3MM
38	2057302	BEARING-UPPER, LIFT SCREW	89	2050102	KNOB-LATCH (VANTAGE)	141 2050921 HANDLE TENSION - LONG
■	2881510	YOKE/BEARING RACE KIT INCL.39,40,42	90	2353401	SCREW-10-16 X 1/2 STALGD	■ 2880910 HANDLE L/R KIT
*39	2051510	YOKE-LIFT SCREW	91	2051716	WASHER-FENDER #10	INCL. 100,101,102,142,143,150
*40	2056200	BEARING RACE-YOKE	92	2151730	WASHER-CUP (HINGE BRACKET)	*142 2050916 HANDLE SIDE L
41	2053401	SCREW-10 X 1/2,TYPE 25,[2.EA]	93	2051737	WASHER-3/8 FLAT (ZINC)	*143 2050911 HANDLE SIDE R
42	2353401	SCREW-10-16 X 1/2 STALGD	94	2053107	NUT-3/8-16, TOPLOCK	■ 2880925 HANDLE/CLAMP SCREW KIT
43	2053400	SCREW-LIFT, 1/2-10 ACME	96	2990921	HANDLE ASSEMBLY, VANTAGE	INCL. 2 EA OF 144-148
44	2052707	SPRING-COIL,SOFT STOP	■	2884106	HANDLE CTRL BOARD/GRIP KIT INCL. 97,149	*144 2051300 SCREW-CLAMP 5/8X4
45	2770429	COIL SPRING/WASHER ASSEMBLY KIT	*97	2994005	CTRL BOARD ASSEMBLY-HANDLE	*145 2050925 HANDLE-CLAMP SCREW
46	2053413	SCREW-10-16X1' TYPE AB,HEX (4 REQ'D)	98	2055115	BUTTON SWITCH ACTUATOR	*146 2052625 PIN-COILED SPRING
■	2883200	WIRE CLAMP KIT INCL. 47,48,49	■	2883701	PLUNGER/GRIP KIT INCL. 99,149	*147 2011710 WASHER-CLAMP SCREW
*47	2053200	WIRE CLAMP, LEFTHAND	*99	2053700	PLUNGER, ON/OFF	*148 2263402 SCREW- 1/4-20X3/4"
*48	2053205	WIRE CLAMP, RIGHTHAND	100	2050111	KNOB-SPEED CONTROL	149 2880424 GRIP KIT
*49	2053417	SCREW-10-16X3/4 TYPE BT,PPH	101	2012100	SCREW-8-18 X 5/8" THD CUT[2.EA]	*150 2053105 NUT- HEX
50	2770400	TAPE SPRING ASSEMBLY INCL. 51-55	102	2053412	SCREW 8 X 1.5"TYPE 25 PPH[2.EA]	151 2881500 TUBE/SLEEVE/BUSHING KIT
51	2052705	SPRING, CONSTANT FORCE	■	2880921	HANDLE TENSION KNOB KIT	152 2990950 HANDLE/CTRL BOARD ASSEMBLY
52	2052610	PIN-PIVOT 7/16" O.D.			INCL. 103,104,105,141	153 2262658 PROP PIN
53	2051920	BRACKET-SPRING	*103	2051736	WASHER-URETHN,ID.4 X OD 1	154 2340610 CONNECTOR CABLE
54	2052305	WIRE GUIDE (VANTAGE)	*104	2053115	NUT-WASHER, HANDLE ASSEMBLY	■ 2994844 TRANSOM EXTRUSION KIT INCL.161-162
55	2053418	SCREW-#4-40X1/4 TYPE F,PPH	*105	2050015	RACHET-DISK, HANDLE ASSEMBLY	*161 2053421 BOLT 14-1/4X1
56	2050225	WIRE SHIELD	■	2880920	BRACKET TENSION HANDLE KIT	*162 2058415 TRANSOM EXTRUSION

VANTAGE 101

36 VOLTS

lift system is 12-volts!

