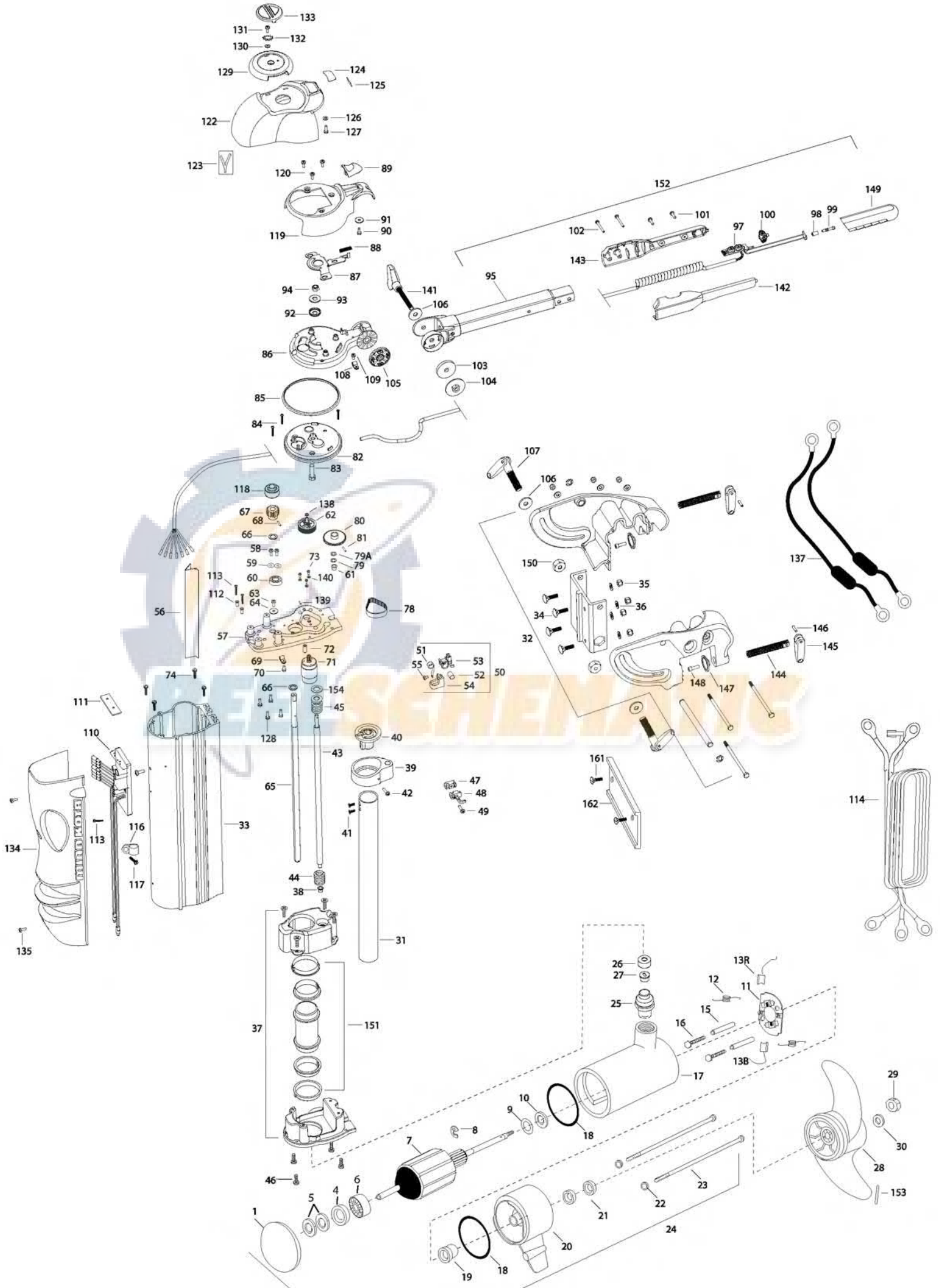


VANTAGE 101  
101 LBS THRUST  
36 VOLT 46 AMPS

for use with "M" serial numbers  
2-year warranty



1	421-276	PLAIN END HOUSING ASSEMBLY	■	2770405	TOP PLATE ASSEMBLY INCL.57,60,61,68					
4	990-045	THRUST SPACER	*57	2051927	TOP PLATE, VANTAGE	*106	2051737	INCL. 106,107,150	WASHER-FLAT,ID.406 X OD.8	
5	992-010	SPRING WASHER [2.EA]	58	2053414	SCREW-#8-32 X 1/2 TRI-LOBE[2.EA]	*107	2050922	HANDLE, TENSION, SHORT	CABLE CLAMP, 3/16" VANTAGE [2.EA]	
6	140-010	BALL BEARING	59	2051717	WASHER-#8 SAE FLAT ZNK PLT [2.EA]	108	2052510	SCREW-#8-32 X 3/8" TRI-LB[3.EA]	CNTRL BRD ASSY 24/36V W/PAD INCL.111	
7	2-100-216	ARMATURE ASSEMBLY	*60	2057306	BEARING-BALL (VANTAGE)	109	2053415	INSULATING PAD	SHOULDER WASHER [2.EA]	
8	788-040	RETAINING RING	*61	2057302	BEARING-UPPER, LIFT SCREW	*110	2774041	SCREW-#8-32 X .75 PPH[3.EA]	LEADWIRE,24/36V,3 CONDUCT	
9	990-051	WASHER-THRUST, STEEL	*62	2052630	PIN, CLUSTER GEAR	*111	2315105	CABLE CLAMP, 1/2" VANTAGE	SCREW-#8-32 X 3/8" TRI-LOBE P	
10	990-052	WASHER- NYLATRON	63	2053415	SCREW-#8-32 X 3/8 TRI-LOBE P	112	2261712	ROLLER-STEERING SHAFT	CONTROL HEAD COVER LATCH KIT	
■	2-600-144	BRUSH/WIRE/PLATE ASSEMBLY INCL.11-13	64	2051716	WASHER-FENDER #10	113	2053407	INCL. 89,90,91,119	COVER-CONTROL HEAD	
*11	738-004	BRUSH PLATE 4" TERMINAL	65	2052001	SHAFT-STEERING, VANTAGE	114	2051220	SCREW-#8-32 X 3/8" TRI-LOBE[3.EA]	SCREW-8-18 X 5/8" THD CUT[3.EA]	
*12	975-041	SPRING -TORSION [2.EA]	66	2051706	WASHER-SPRING SUPPORT[2.EA]	116	2052512	SHROUD-CONTROL HEAD	DECAL-SHROUD (VANTAGE)[2.EA]	
13	188-094	BRUSH	67	2052205	GEAR, STEERING TUBE MACHINED	117	2053415	DECAL-COVER, 36V	DECAL-COVER, LED	
13	188-094	BRUSH	*68	2052615	PIN-DRIV-LOK 1/8 X 1 1/8	118	2052210	WASHER- .152 ID, .50 OD, .06	SCREW-6-20 X 1/2" THD CUT	
15	973-025	SPACER -BRUSH PLATE [2.EA]	69	2052510	CABLE CLAMP, 3/16" VANTAGE	■	2880102	SCREW-8-18 X 5/8" THD CUT(4REQ'D)	SCREW-8-18 X 5/8" THD CUT	
16	830-027	SCREW -SELF THREADED 10-32 X 2" [2.EA]	70	2053415	SCREW-#8-32 X 3/8 TRI-LOBE P	119	2050200	KNOB-POINTER, VANTAGE	WASHER- #8 SAE FLAT ZNK PLT	
17	431-110	HOUSING ASSEMBLY- CENTER	71	2777812	MOTOR-LIFT (12,24,36V)	120	2053415	WASHER-THRUST ID.315, OD.562	GEAR LIFT/PIN KIT INCL.80,62	
18	701-043	O-RING (2 REQ'D)	72	2058411	TENSIONER-BELT (VANTAGE)	120	2053415	LIFT GEAR ASSEMBLY	PIN-DRIV-LOK 1/8 X 5/8"	
19	144-017	BEARING -FLANGE	73	2053422	SCREW - 3MM	121	2012100	CAP-LOWER, GEAR HOUSING	BOLT-3/8-16 X 1.25	
20	2-300-160	BRUSH END HOUSING ASSEMBLY	74	2053413	SCREW-10-16X1' TYPE AB,HEX[4.EA]	122	2050211	SCREW-10-24 X 1" TRI-LOBE [3.EA]	O-RING, GEAR HOUSING	
21	880-025	SEAL [2.EA]	■	2882201	CLUSTER GEAR / FLANGE PULLEY KIT	123	2055612	O-RING, GEAR HOUSING	CAP-UPPER, GEAR HOUSING	
22	701-009	O-RING -THRU BOLT [2.EA]			INCL. 75,76,77	124	2055602	LATCH (VANTAGE)	LATCH (VANTAGE)	
■	2889460	SEAL & ORING KIT INCL. 18, 21, & 22	*75	2770428	PULLEY/PINION GEAR ASSEMBLY	125	2055610	SPRING, LATCH RETURN	KNOB-LATCH (VANTAGE)	
23	830-096	THRU BOLT 12-24 X 11.56" SS [2.EA]	*76	2058405	FLANGE-PULLEY (VANTAGE)	126	2051712	SCREW-10-16 X 1/2 STALGD	WASHER-FENDER #10	
24	2316261	MOTOR ASSEMBLY, 4", 36V (ITEMS 1-27)	*77	2053418	SCREW 4-40 X 1/4 PPH[2.EA]	127	2302100	WASHER-CUP (HINGE BRACKET)	*142	2050916
25	979-015	STRAIN RELIEF - BODY	78	2050800	BELT-DRIVE (VANTAGE)	128	2012100	WASHER-3/8 FLAT (ZINC)	*143	2050911
26	9950339	CAP - STRAIN RELIEF	79	2051705	WASHER-NYLON ID.312 X OD.	129	2050110	NUT-3/8-16, TOPLOCK	■	2880925
27	2382900	GROMMET - STRAIN RELIEF	79A	2051703	WASHER-THRUST ID.315, OD.562	130	2051717	HANDLE ASSEMBLY, VANTAGE	*144	2051300
28	2331160	PROPELLER (W.WEDGE 2) MAX 101	■	2882200	GEAR LIFT/PIN KIT INCL.80,62	131	2332101	HANDLE CTRL BOARD/GRIP KIT INCL. 97,149	*145	2050925
29	2093101	NUT-PROP NYLOC (LARGE) MAX 101	*80	2990426	LIFT GEAR ASSEMBLY	132	2371715	CTRL BOARD ASSEMBLY-HANDLE	*146	2052625
30	2091701	WASHER-PROP (LARGE) MAX 101	81	2052620	PIN-DRIV-LOK 1/8 X 5/8"	133	2056700	PLUNGER/G RIP KIT INCL. 99,149	*147	2011710
31	2772010	TUBE-MOTOR, 1 3/4" KIT W/TEMPLATE	82	2056520	CAP-LOWER, GEAR HOUSING	134	2050220	PLUNGER, ON/OFF	*148	2263402
32	2991822	TRANSOM BRACKET ASSEMBLY 36V	83	2383500	BOLT-3/8-16 X 1.25	135	2053414	KNOB-SPEED CONTROL	149	2880424
33	2056505	HOUSING EXTRUSION	84	2053402	SCREW-10-24 X 1" TRI-LOBE [3.EA]	135	2053414	SCREW-8-18 X 5/8" THD CUT[2.EA]	*150	2053105
34	2053511	BOLT-CARRIAGE 5/16-18 1"[4.EA]	85	2054600	O-RING, GEAR HOUSING	136	2055611	SCREW 8 X 1.5"TYPE 25 PPH[2.EA]	151	2881500
35	2151726	WASHER-5/16 STD (S/S)[4.EA]	86	2056510	CAP-UPPER, GEAR HOUSING	137	2998200	HANDLE TENSION KNOB KIT	152	2990950
36	2053103	NUT, 5/16-18 NYLOC [4.EA]	87	2057200	LATCH (VANTAGE)	138	2051732	INCL. 103,104,105,141	153	2262658
37	2770420	LOWER SUPPORT CAGE ASSEMBLY	88	2052711	SPRING, LATCH RETURN	139	2053420	WASHER-URETHN,ID.4 X OD 1	154	2340610
38	2057302	BEARING-UPPER, LIFT SCREW	89	2050102	KNOB-LATCH (VANTAGE)	140	2051710	NUT-WASHER, HANDLE ASSEMBLY		
■	2881510	YOKE/BEARING RACE KIT INCL.39,40,42	90	2353401	SCREW-10-16 X 1/2 STALGD	141	2050921	RACHET-DISK, HANDLE ASSEMBLY		
*39	2051510	YOKE-LIFT SCREW	91	2051716	WASHER-FENDER #10	■	2880910	BRACKET TENSION HANDLE KIT		
*40	2056200	BEARING-RACE-YOKE	92	2151730	WASHER-CUP (HINGE BRACKET)					
41	2053401	SCREW-10 X 1/2,TYPE 25,[2.EA]	93	2051737	WASHER-3/8 FLAT (ZINC)					
42	2353401	SCREW-10-16 X 1/2 STALGD	94	2053107	NUT-3/8-16, TOPLOCK					
43	2053400	SCREW-LIFT, 1/2-10 ACME	96	2990921	HANDLE ASSEMBLY, VANTAGE					
44	2052707	SPRING-COIL,SOFT STOP	■	2884106	HANDLE CTRL BOARD/GRIP KIT INCL. 97,149					
45	2770429	COIL SPRING/WASHER ASSEMBLY KIT	*97	2994005	CTRL BOARD ASSEMBLY-HANDLE					
46	2053413	SCREW-10-16X1' TYPE AB,HEX (4 REQ'D)	98	2055115	BTUTON SWITCH ACTUATOR					
■	2883200	WIRE CLAMP KIT INCL. 47,48,49	■	2883701	PLUNGER/G RIP KIT INCL. 99,149					
*47	2053200	WIRE CLAMP, LEFTHAND	*99	2053700	PLUNGER, ON/OFF					
*48	2053205	WIRE CLAMP, RIGHTHAND	100	2050111	KNOB-SPEED CONTROL					
*49	2053417	SCREW-10-16X3/4 TYPE BT,PPH	101	2012100	SCREW-8-18 X 5/8" THD CUT[2.EA]					
50	2770400	TAPE SPRING ASSEMBLY INCL. 51-55	102	2053412	SCREW 8 X 1.5"TYPE 25 PPH[2.EA]					
51	2052705	SPRING, CONSTANT FORCE	■	2880921	HANDLE TENSION KNOB KIT					
52	2052610	PIN-PIVOT 7/16" O.D.			INCL. 103,104,105,141					
53	2051920	BRACKET-SPRING	*103	2051736	WASHER-URETHN,ID.4 X OD 1					
54	2052305	WIRE GUIDE (VANTAGE)	*104	2053115	NUT-WASHER, HANDLE ASSEMBLY					
55	2053418	SCREW-#4-40X1/4 TYPE F,PPH	*105	2050015	RACHET-DISK, HANDLE ASSEMBLY					
56	2050225	WIRE SHIELD	■	2880920	BRACKET TENSION HANDLE KIT					
						160	2774840	TRANSOM EXTRUSION KIT INCL.161		
						*161	2053419	BOLT 14-1/4X1		

# VANTAGE 101

## 36 VOLTS ONLY

