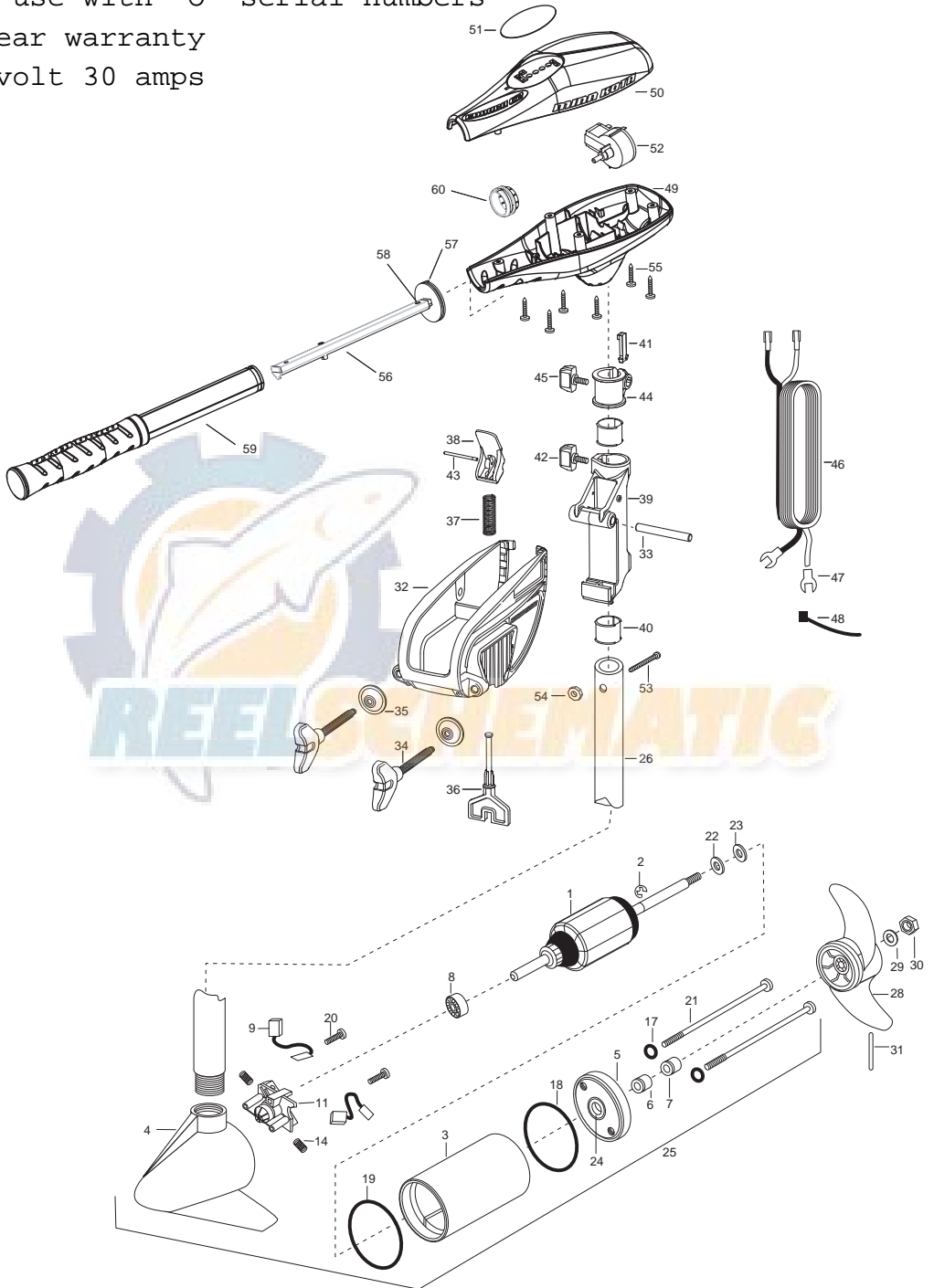


ENDURA 30 PARTS DIAGRAM

for use with "0" serial numbers

2-year warranty

12-volt 30 amps

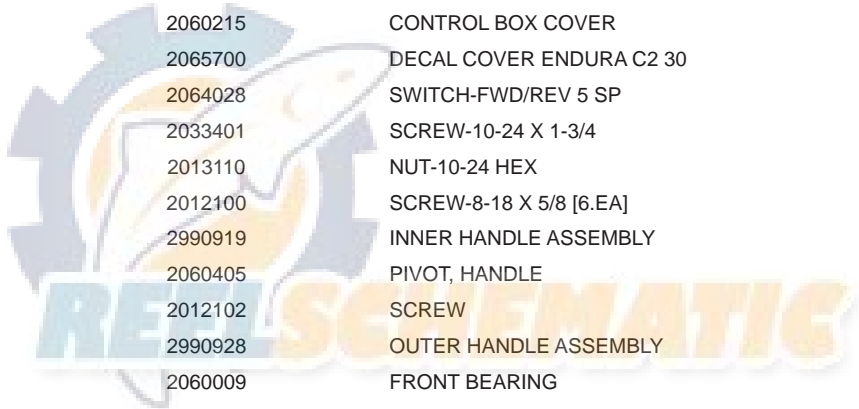


ENDURA 30 - 30" PARTS LIST

| <u>Item</u> | <u>Part Number</u> | <u>Description</u> |
|-------------|--------------------|---|
| 1 | 2-100-285 | ARMATURE ASSEMBLY 12v 3.25 |
| 2 | 788-015 | RETAINING RING |
| 3 | 2-200-188 | HOUSING ASSEMBLY CENTER 3.25 TXT |
| 4 | 2-300-142 | BRUSH END HOUSING ASSEMBLY 3.25 SP.CO |
| 5 | 2-400-187 | PLAIN END HOUSING ASSEMBLY 3.25 |
| 6 | 880-003 | SEAL |
| 7 | 880-006 | SEAL W/SHIELD |
| 8 | 140-010 | BALL BEARING |
| 9 | 188-055 | BRUSH ASSEMBLY [2.EA] |
| 11 | 738-030 | BRUSH PLATE W/HOLDER 3.25 |
| 14 | 975-032 | SPRING-COMPRESSION [2.EA] |
| 17 | 701-007 | O-RING- THRU BOLT [2.EA] |
| 18 | 701-039 | O-RING MK406460 |
| 19 | 701-041 | O-RING |
| 20 | 830-001 | SCREW- SELF THREAD 8-32X1.7 [2.EA] |
| 21 | 830-062 | THRU BOLT 8-32X8.0 [2.EA] |
| 22 | 990-067 | WASHER- STEEL THRUST |
| 23 | 990-070 | WASHER- NYLATRON [2.EA] |
| 24 | 144-049 | FLANGE BEARING (SERVICE ONLY) |
| 25 | 2069275 | MOTOR ASSEMBLY 12 V 3.25 5SPC TXT |
| 26 | 2032045 | TUBE, COMPOSITE 30" |
| ■ | 1378121 | PROP W/DRIVE PIN, WASHER, NUT KIT |
| 28 | 2061122 | PROPELLER 3.25 HUB DIA |
| 29 | 2151726 | WASHER- 5/16 STD SS |
| 30 | 2053101 | NUT-PROP NYLOCK (MED) SS |
| 31 | 2092600 | PIN-DRIVE |
| ■ | 2771818 | BRACKET & HINGE ASSEMBLY (INCLUDES 32-43) |
| ■ | 2771910 | BRACKET ASSEMBLY (INCLUDES 32, 34, 35) |
| *32 | 2061910 | BRACKET |
| 33 | 2060510 | PIN-HINGE |
| *34 | 2061300 | SCREW-CLAM [2.EA] |
| *35 | 2011710 | WASHER-CLAMP SCREW [2.EA] |
| 36 | 2063605 | T-BAR, PLASTIC |
| 37 | 2062706 | SPRING- (T-BAR) |

PARTS LIST (cont.)

| <u>Item</u> | <u>Part Number</u> | <u>Description</u> |
|-------------|--------------------|-------------------------------|
| 38 | 2067201 | LEVER-TILT BLACK |
| 39 | 2061810 | HINGES-PLASTIC |
| 40 | 2037301 | BUSHING-HINGE [2.EA] |
| 41 | 2062800 | TENSION BLOCK-SNAP IN |
| 42 | 2011385 | SCREW, TENSION/KNOB |
| 43 | 2060515 | PIN, TILT LEVER |
| 44 | 2061520 | COLLAR-DEPTH |
| 45 | 2011365 | SCREW-COLLAR/NEW KNOB |
| 46 | 2020606 | LEADWIRE (14 GA) W/SPADE TERM |
| 47 | 2020703 | SPADE TERMINAL 14GA HD [2.EA] |
| 48 | 2026300 | TIE WRAP |
| 49 | 2062515 | CONTROL BOX |
| 50 | 2060215 | CONTROL BOX COVER |
| 51 | 2065700 | DECAL COVER ENDURA C2 30 |
| 52 | 2064028 | SWITCH-FWD/REV 5 SP |
| 53 | 2033401 | SCREW-10-24 X 1-3/4 |
| 54 | 2013110 | NUT-10-24 HEX |
| 55 | 2012100 | SCREW-8-18 X 5/8 [6.EA] |
| 56 | 2990919 | INNER HANDLE ASSEMBLY |
| 57 | 2060405 | PIVOT, HANDLE |
| 58 | 2012102 | SCREW |
| 59 | 2990928 | OUTER HANDLE ASSEMBLY |
| 60 | 2060009 | FRONT BEARING |
| ■ | 2883460 | SEAL AND O RING KIT |



* This item is part of an assembly. This item cannot be sold separately due to machining and/or assembly that is required.

WIRING DIAGRAM

