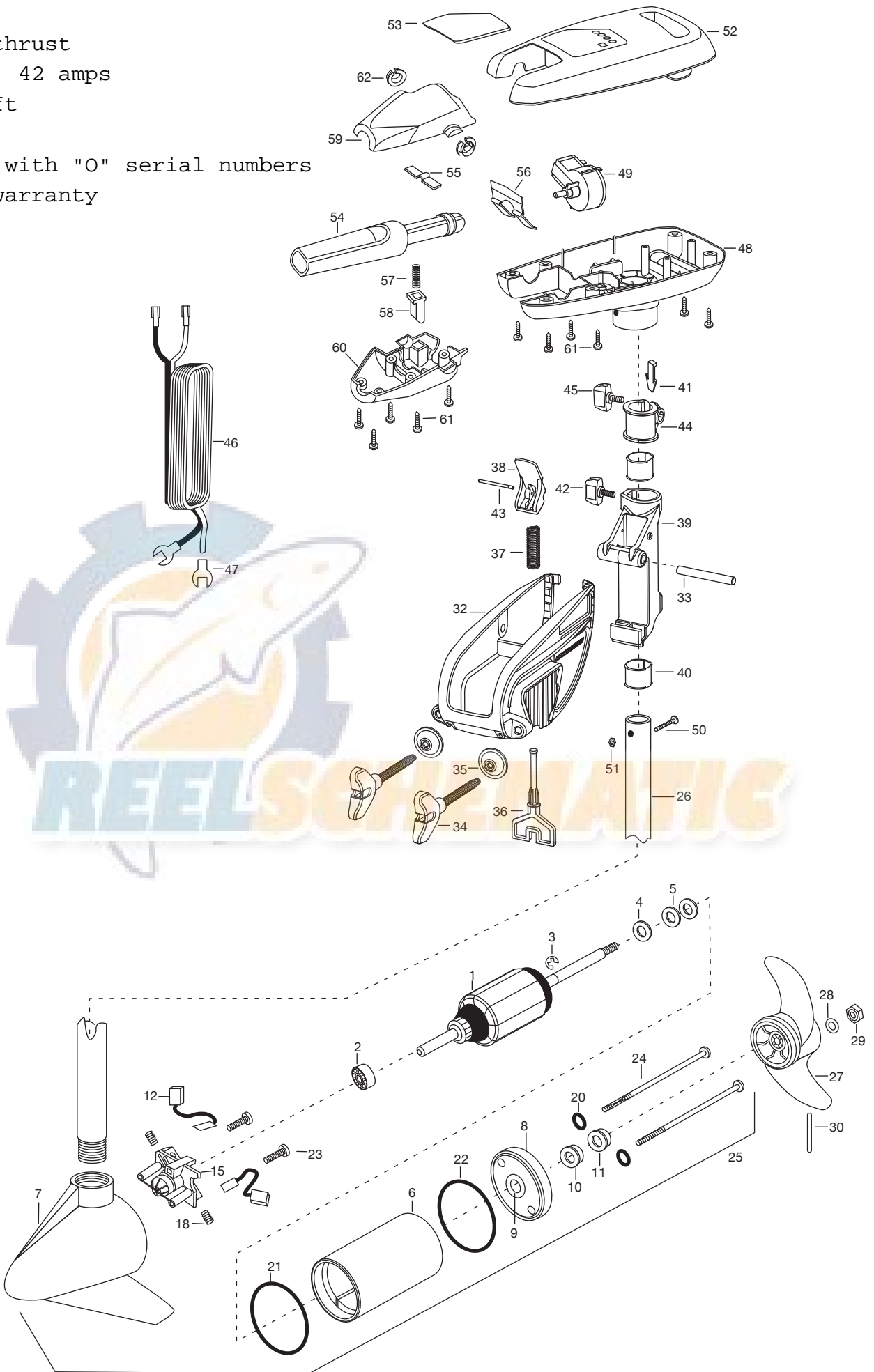


Camo 45  
45 lbs thrust  
12 volt 42 amps  
36" shaft

for use with "0" serial numbers  
2-year warranty



# PARTS LIST

---

In the U.S.A., replacement parts may be ordered directly from Minn Kota Parts Dept., 121 Power Dr., Mankato, MN 56002-8129. In Canada, parts may be ordered from any of the Canadian Authorized Service Centers. Visit minnkotamotors.com for a current listing. Be sure to provide the MODEL and SERIAL number of your motor when ordering parts. Please use the correct part numbers from the parts list. Payment for any parts ordered from the MINN KOTA parts department may be by cash, personal check, Discover Card, Master Card or VISA. To order call 1-800-227-6433 or FAX 1-800-527-4464.

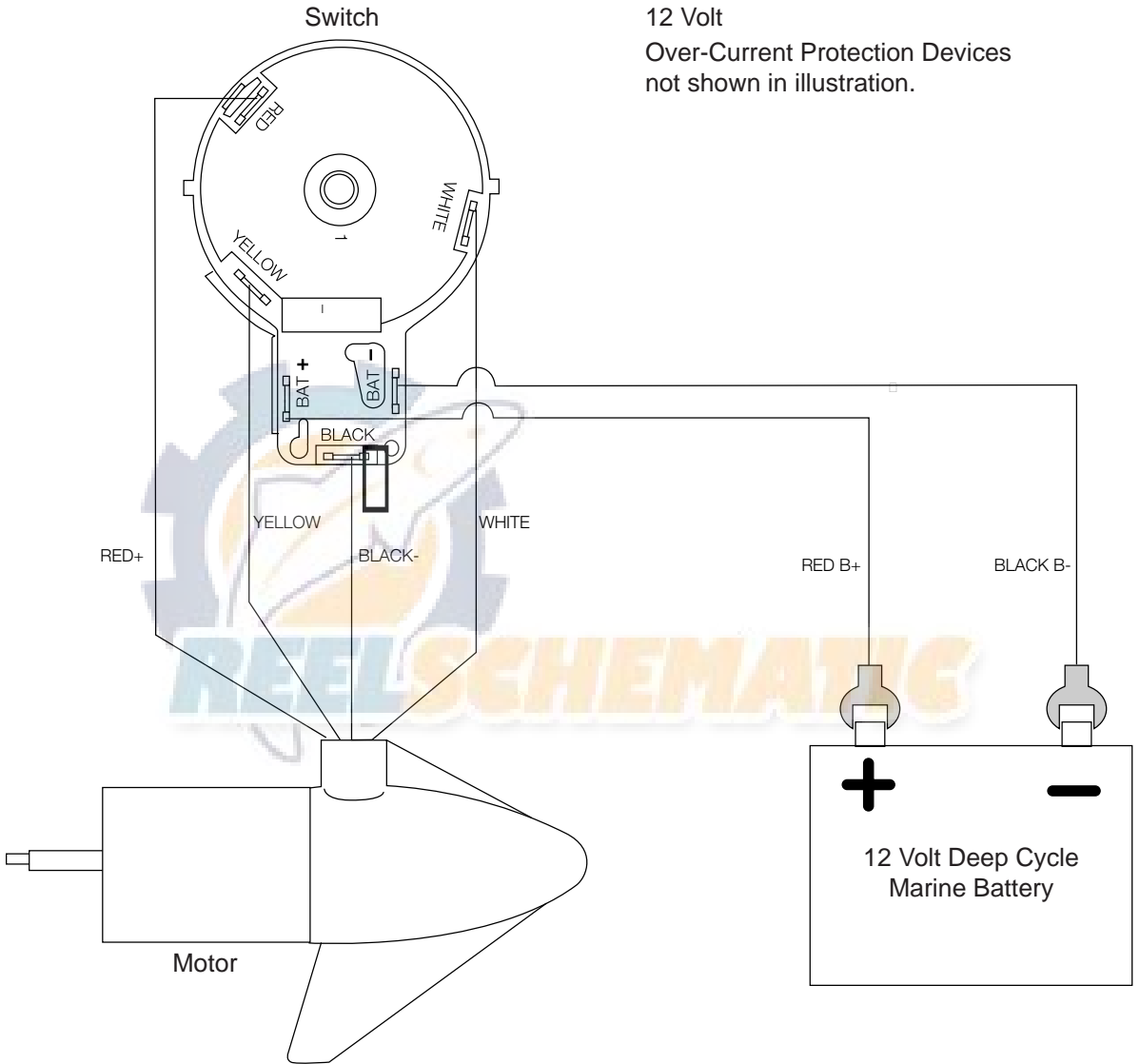
---

<b>Item</b>	<b>Part Number</b>	<b>Description</b>
1	2-100-204	ARMATURE ASSEMBLY 12V 3.25 45#
2	140-010	BEARING-BALL
3	788-015	RETAINING RING
4	990-067	WASHER- STEEL THRUST
5	990-070	WASHER- NYLATRON [2.EA]
6	2-200-079	HOUSING ASSEMBLY CENTER 3.25 TXT
7	2-300-132	HOUSING ASSEMBLY BRUSH END 3.25 SP. CO.
8	2-400-128	PLAIN END HOUSING ASSEMBLY 3.25
9	144-049	BEARING - FLANGE [SERVICE ONLY]
10	880-003	SEAL
11	880-006	SEAL W/SHIELD
14	188-052	BRUSH ASSEMBLY [2.EA]
17	738-030	BRUSH PLATE W/HOLDER 3.25 ASSEMBLY
18	975-032	SPRING-COMPRESSION [2.EA]
20	701-007	O-RING [2.EA]
21	701-041	O-RING
22	701-039	O-RING MK406460
23	830-001	SCREW - SELF-THREAD 8-32X1.7 [2.EA]
24	830-078	THRU BOLT 8-32X8.96 [2.EA]
25	2069285	MOTOR ASSEMBLY 12V 3.25 SC FW 45#
26	2067711	TUBE (COMP) WITH CS K HOLE 36" CAMO DIPPED
■	1378121	PROPELLER KIT
27	2061122	PROPELLER
28	2151726	WASHER-PROP (MEDIUM)
29	2053101	NUT-PROP NYLOC
30	2092600	PIN-DRIVE (SS)
■	2771810	BRACKET & HINGE ASSEMBLY - CAMO
■	2771910	BRACKET W/CLAMP SCREW ASSEMBLY (INCL. 32, 34, 35)

<u>Item</u>	<u>Part Number</u>	<u>Description</u>
*32	2061910	BRACKET PLASTIC
33	2060510	PIN-HINGE - ENDURA
*34	2061300	SCREW-CLAMP
*35	2011710	WASHER-CLAMP SCREW 1.5OD
■	2881300	CLAMP SCREW, WASHER, RETAINER KIT
36	2063605	T-BAR PLASTIC
37	2062706	SPRING- (T-BAR)
38	2067201	LEVER-TILT BLACK - ENDURA
39	2061810	HINGE-PLASTIC
40	2037301	BUSING-HINGE [2.EA]
41	2062800	TENSION BLOCK - SNAP IN
42	2011385	SCREW - TENSION / NEW KNOB
43	2060515	PIN - TILT LEVER
44	2061520	COLLAR-DEPTH (ENDURA)
45	2011365	SCREW - COLLAR / NEW KNOB
46	2050609	LEADWIRE (10 GA) W/SPADE TERM
47	2020702	TERMINAL SPADE 10 GA [2.EA]
48	2067706	CONTROL BOX - CAMO W/HAND 5 SPD
49	2064028	SWITCH - FWD/REV 5 SPD
50	2033400	SCREW-10-24 X 1-3/4
51	2013110	NUT-10-24 HEX
52	2060284	CONTROL BOX COVER - CAMO
53	2035622	DECAL - COVER 45 CAMO WATERFOWL
54	2990918	HANDLE ASSEMBLY - W/U-JOING 5 SPD
55	2302742	SPRING - DETENT OFF (SS)
56	2302743	SPRING - DETENT HANDLE - TILE
57	2302745	SPRING RELEASE BUTTON (SS)
58	2303720	RELEASE BUTTON - HANDLE
59	2067708	HANDLE (TOP HALF) CAMO
60	2067707	HANDLE (LOWER HALF) CAMO
61	2303412	SCREW - 6-20 X 5.8 SELF TAP [11 EA]
62	2060005	BEARING - HANDLE PIVOT [2 EA]
■	2883460	SEAL AND O RING KIT

\* This item is part of an assembly. This item cannot be sold separately due to machining and/or assembly that is required.

# WIRING DIAGRAM



12 Volt  
Over-Current Protection Devices  
not shown in illustration.