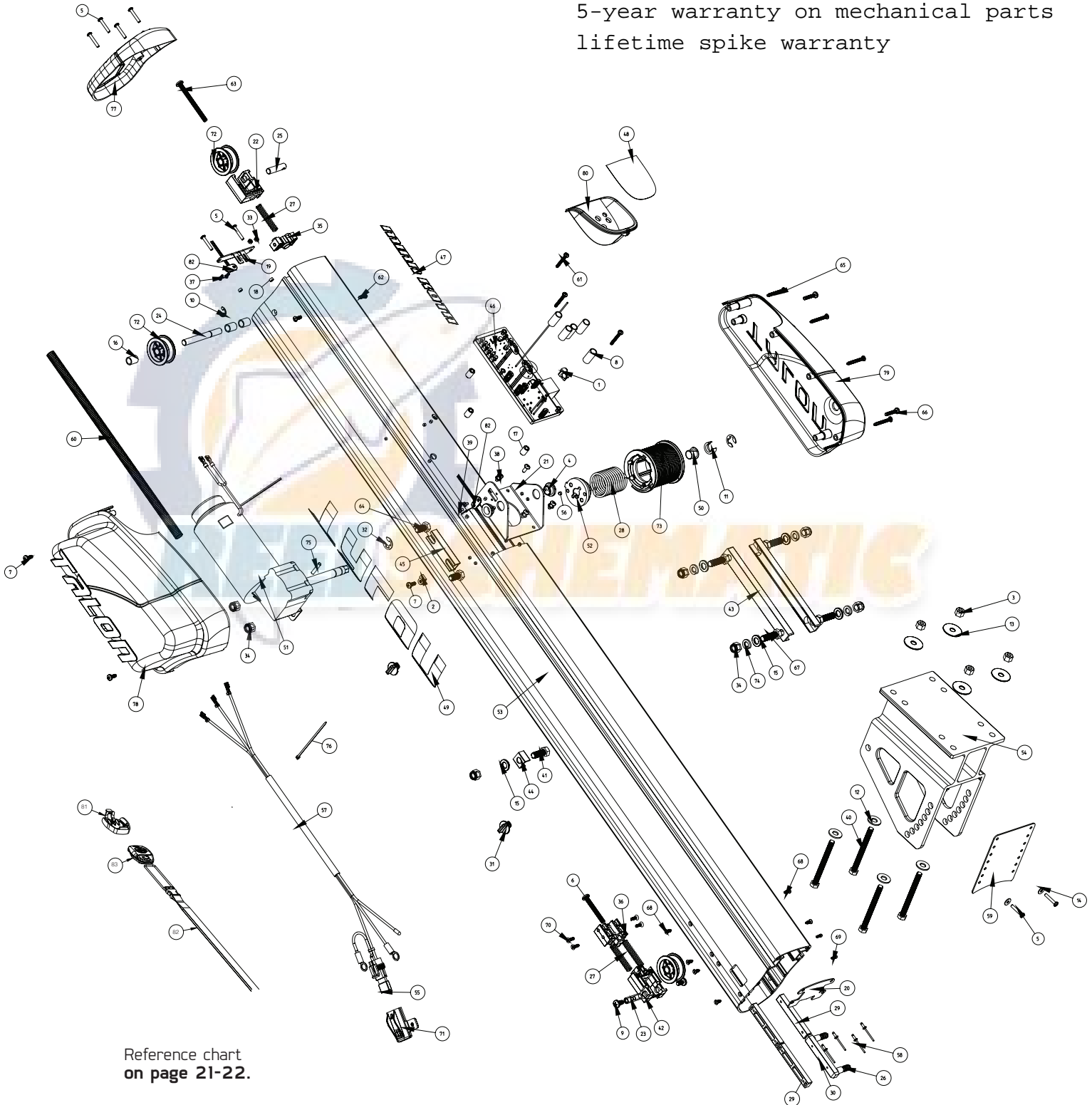


Talon - 10' & 12' Shallow Water Anchor

# PARTS LIST

for use with "P" serial numbers

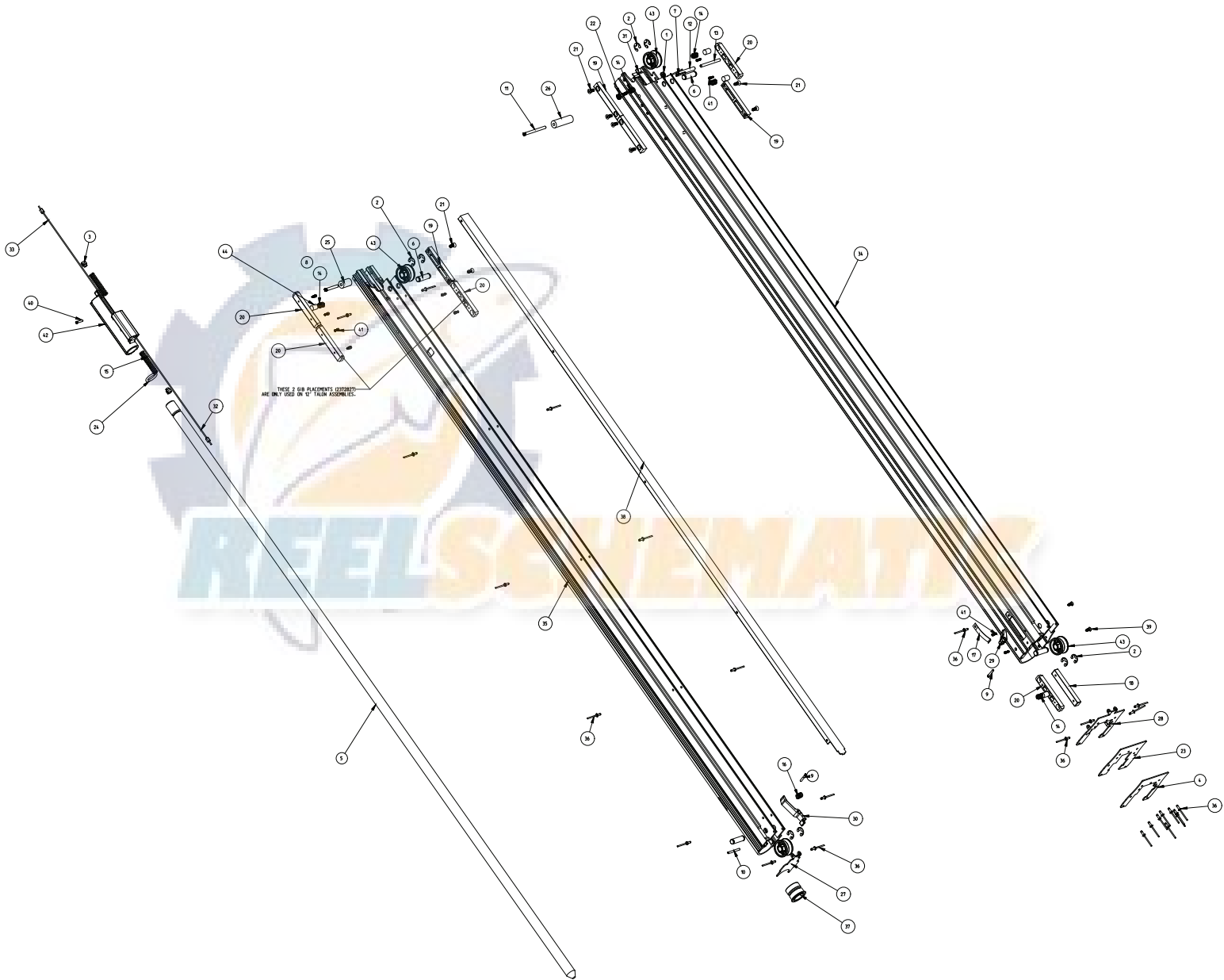
2-year warranty on electrical parts  
5-year warranty on mechanical parts  
lifetime spike warranty



Reference chart  
on page 21-22.

ITEM NUMBER	QUANTITY	PART NUMBER(S)	PART NAME
1	2	2040340	SCOTCHLOK CONNECTOR
2	1	2052510	CLAMP CABLE, 3/16"
3	4	2223100	5/16-18 NYLOCK, SS
4	2	2227304	BUSHING-HAT 1/2" SHAFT BRONZE
5	8	2263434	#8-18 X 1 SS PPH
6	1	2283410	SCREW, 1/4-20 X 3/4 FLAT
7	3	2303434	SCREW, #8-32 X 5/8 PPMS SS
8	5	2305404	SHRINK TUBE, .374 ID X 1.0"
9	2	2323404	SCREW, 1/4-20 x 1/2" PPH
10	1	2370832	C-CLIP, 3/8 LOW CLEARANCE SS
11	1	2371537	WRAP DRUM SPACER
12	4	2371749	5/16" FLAT WASHER, SS
13	4	2371752	WASHER, 5/16 FENDER
14	2	2371754	#8 WASHER, 1/2 OD, SS
15	5	2371758	3/8 HD FLAT WASHER, SS
16	3	2371765	PULLEY SPACER, SHORT
17	3	2371767	CONTROL BOARD SPACER, T2
18	2	2371780	SPACER, #8 X .125"
19	1	2371909	SENSOR BRACKET, TALON2
20	1	2371957	WATER GUARD, MAIN TALON2
21	1	2371992	WRAP DRUM MOUNT, TALON2
22	1	2372350	TENSIONER BLOCK
23	1	2372660	PIN, PULLEY LONG, TALON2
24	1	2372663	BOTTOM PULLEY PIN, T2
25	1	2372664	TENSIONER-PULLEY-PIN
26	2	2372740	SPRING, GIB TENSION
27	3	2372742	SPRING, PISTON
28	1	2372746	SPRING, TORSION - WRAP DRUM, TALON2
29	3	2372820	SLIDE GIB, LOWER
30	1	2372827	SLIDE GIB, FLOATING .089
31	2	2372930	CORD RETAINER
32	2	2373005	E-RING EXTERNAL SS .500
33	2	2373106	NUT #4-40 NYLOK, SS
34	7	2373138	3/8-24 MYLOK NUT, SS
35	1	2373201	TENSIONER STOP
36	1	2373202	EXTENSION TENSIONER STOP
37	2	2373439	SCREW #4 X 5/8 PPMS SS
38	4	2373481	SCREW #10-32 X 1/2 SEMS PPH SS
39	2	2373485	#6-32 X 1/4" TYPE F PPH SS
40	4	2373525	5/16-18 X 3-1/2 HHCS SS
41	1	2373529	3/8-16 X 1" HHCS SS
42	1	2373630	EXTENSION TENSIONER SLIDE
43	2	2373815	TALON MOUNTING TRAP, T2
44	1	2373816	TALON STOP BOLT EXTRUSION
45	1	2373820	TALON 2, MOTOR STRAP
46	1	2374169	PCB-ASM, TALON 2
47	1	2375687	DECAL, MINNKOTA FRONT, TALON
48	1	2375739 2375758 2375797 2375759	DECAL, COVER-BEZEL - 12' BLACK DECAL, COVER-BEZEL - 10' BLACK DECAL, COVER-BEZEL - 12' WHITE DECAL, COVER-BEZEL - 10' WHITE
49	1	2375880	DECAL, LARGE TALON LOGO
50	1	2376012	BEARING, WRAP DRUM
51	1	2377814	SEALED MOTOR, TALON 2
52	1	2377906	HUB, WRAP DRUM, ALUMINUM

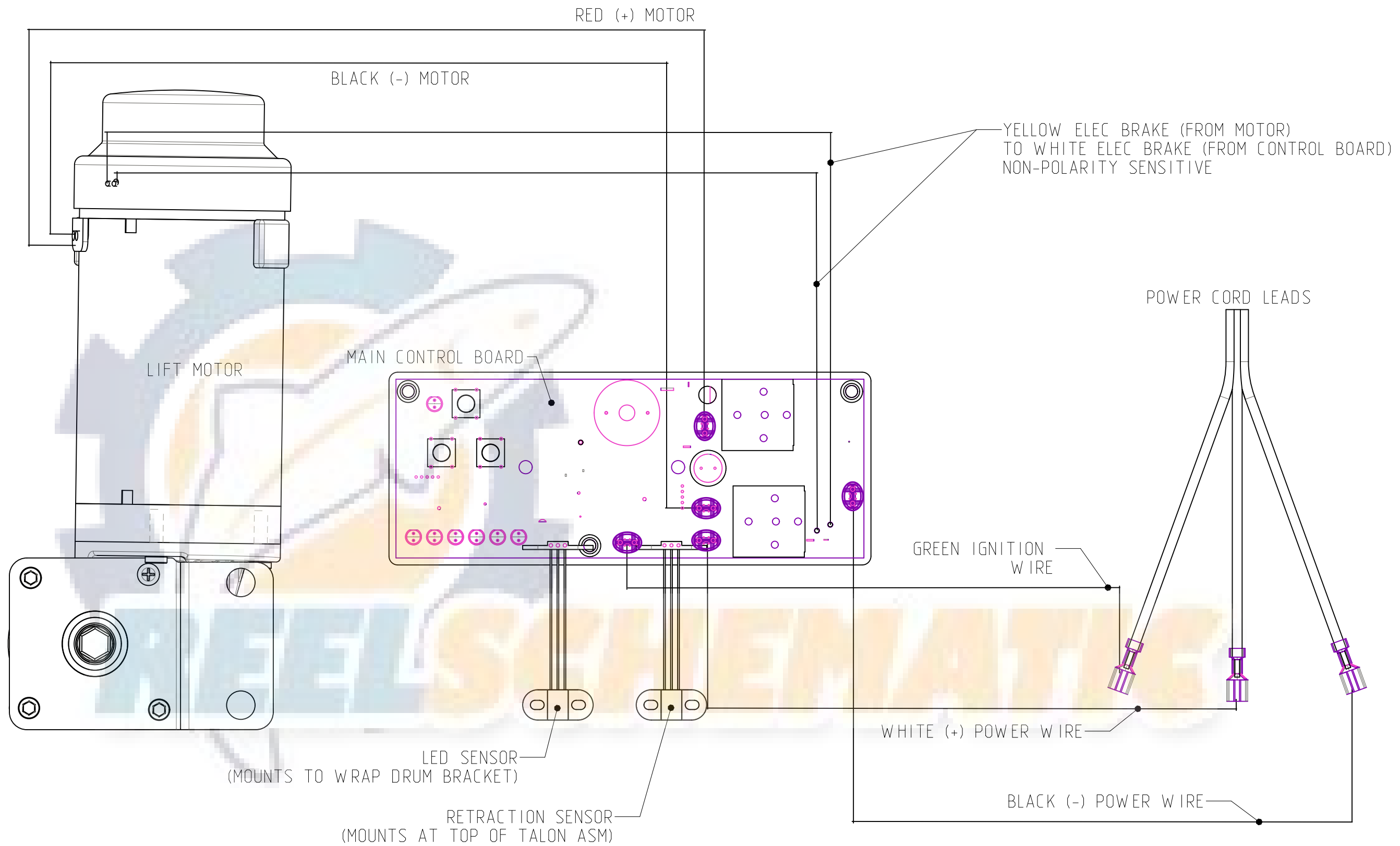
ITEM NUMBER	QUANTITY	PART NUMBER(S)	PART NAME
<b>53</b>	1	2378060	OUTER COLOR EXTRUSION - 10' CLEAR
		2378061	OUTER COLOR EXTRUSION - 10' BLACK
		2378062	OUTER COLOR EXTRUSION - 10' BLUE
		2378063	OUTER COLOR EXTRUSION - 10' RED
		2378065	OUTER COLOR EXTRUSION - 12' CLEAR
		2378066	OUTER COLOR EXTRUSION - 12' BLACK
		2378067	OUTER COLOR EXTRUSION - 12' BLUE
		2378068	OUTER COLOR EXTRUSION - 12' RED
<b>54</b>	1	2378031	TILT BRACKET, MACHINED, TALON 2
<b>55</b>	1	2378231	RESETTABLE FUSE - 30A
<b>56</b>	2	2378448	.187 X .125 MAGNET
<b>57</b>	1	2378514	POWER CORD, 14AWG, 3 CONDUCTOR
<b>58</b>	4	2378601	POP RIVET, 1/8" SS
<b>59</b>	1	2378809	WATER SHIELD, DEFLECTOR TALON 2
<b>60</b>	1	2378850	WIRE LOOM 3/8"
<b>61</b>	3	2383444	#8-32 X 1-1/4" PPH MACHINE SS
<b>62</b>	2	2383446	#8-16 X 1/2" PLASTITE SCREW SS
<b>63</b>	1	2383451	SCREW, 1/4-20 X 2.75" PPH SS
<b>64</b>	2	2383456	3/8-24 X .75" HHCS SS
<b>65</b>	4	2383457	SCREW #8-16 X 1.5 PLASTITE SS
<b>66</b>	2	2383458	SCREW #8-32 X 1.0 PPH SS
<b>67</b>	4	2373459	3/8-24 X 1.25 HHCS SS
<b>68</b>	6	2383461	SCREW, #8 X .437 SS HI-LO
<b>69</b>	2	2383468	SCREW #4-40 X 5/16 SHCS SS
<b>70</b>	4	2383474	SCREW, #8-16 X 1/2" PFH, SS
<b>71</b>	1	2990279	FUSE CAP W DECAL
<b>72</b>	3	2992366	PULLEY W BUSHING, LARGE IDLER
<b>73</b>	1	2997920	WRAP DRUM, MODULAR ASM TALON 2
<b>74</b>	4	3391706	WASHER 3/8 SS
<b>75</b>	1	3392640	PIN, DRIVESHAFT
<b>76</b>	1	9950433	TIE WRAP, 4"
<b>77</b>	1	2370285	COVER FW TALON 2, BLACK
		2370286	COVER SW TALON 2, WHITE
<b>78</b>	1	2370293	HOUSING LEFT, TALON 2 BLACK
		2370294	HOUSING LEFT, TALON 2 WHITE
<b>79</b>	1	2370297	HOUSING RIGHT, TALON 2 BLACK
		2370298	HOUSING RIGHT, TALON 2 WHITE
<b>80</b>	1	2378835	BEZEL HOUSING, TALON 2 BLACK
		2378836	BEZEL HOUSING, TALON 2 WHITE
<b>81</b>	1	2371883	REMOTE DASH HOLDER
<b>82</b>	1	2370818	LANYARD, REMOTE
<b>83</b>	2	2994044	REMOTE ASSEMBLY



Reference chart  
on page 24.

ITEM NUMBER	QUANTITY	PART NUMBER(S)	PART NAME
1	1	2333101	NUT, 10-24 NYLOK 18-8 SS
2	8	2370832	C-CLIP, 3/8 LOW CLEARANCE SS
3	2	2370850	CABLE-KEEPER
4	1	2371981	WIPER, RETAINER
5	1	2372007 2372008	SPIKE, .75 X 48.3", 10' SPIKE, .75" x 56.4", 8/12'
6	4	2372316	SHAFT, IDLER
7	1	2372643	PIN, SPRING 1/8 X 1.0 SS
8	1	2372645	PIN-DOWEL 3/16" X 1.5 SS TALON 2
9	2	2372653	PIN KNURLED 1/8"
10	1	2372654	PIN, SPRING 1/8 X 1-1/4 SS
11	1	2372659	PIN DOWEL 3/16 X 2.5 SS TALON 2
12	1	2372668	3RD STAGE SUPPORT PIN
13	1	2372669	3RD STAGE SUPPORT DOWEL
14	5	2372740	SPRING, GIB TENSION
15	2	2372742	SPRING, PISTON
16	1	2372743	SPRING, .36 X .5
17	1	2372748	SPRING-LATCH-3RD
18	1	2372820	SLIDE GIB, LOWER
19	4	2372821	SLIDE GIB, UPPER
20	5	2372827	SLIDE GIB, FLOATING .089
21	8	2373489	SCREW, #10-24 X .500 MACHINE
22	1	2373532	SHOULDER SCREW, 1/4 X 5/16 SS
23	1	2374618	WIPER, 2ND STAGE
24	1	2374632	O-RING, 3/4" ID X .125
25	1	2375416	INSULATOR, 1/4" STOP PIN
26	1	2375418	2ND STAGE INSULATOR, 1/4" STOP PIN TALON 2
27	1	2376440	SHIELD-DEBRIS, 2ND STAGE
28	1	2376441	DEBRIS-SHIELD-2ND STAGE WIPER
29	1	2377201	3RD STAGE LATCH
30	1	2377205	LATCH SECOND STAGE
31	1	2377220	CLIP-3RD STAGE
32	1	2377500 2377501	CABLE ASSY, 2 MM, EXTEND 12" CABLE ASSY, 2MM, EXTEND 10'
33	1	2377502	CABLE ASSY, 2 MM RETRACT 10/12
34	1	2378027	3RD STAGE, MACHINED 10/12
35	1	2378029	2ND STAGE, MACHINED 10/12
36	31	2378601	POP RIVET, 1/8" SS
37	1	2378825	ISOLATOR, SPIKE
38	1	2378824	DEBRIS-CHANNEL
39	2	2383461	SCREW, #8 X .437 SS HI-LO
40	1	2383464	SETSCREW M4-.07 X .70" SS
41	10	2383468	SHCS 4-40 X 5/16 SS
42	1	2991509	PISTON W/ MAGNETS ASM
43	4	2992365	SM IDLER PULLEY W BUSHING

PART NO.  
2374968



A		35513		RELEASE FOR PRODUCTION		GPB	3.25.14	JOHNSON OUTDOORS MARINE ELECTRONICS, INC.	
REV.	ECN NO.	DESCRIPTION				BY	DATE	PART NAME: WIRING DIAGRAM - TALON 2	
TOLERANCES: UNLESS OTHERWISE SPECIFIED		CONFIDENTIAL PROPERTY- This document is the confidential property of Johnson Outdoors and is loaned subject to return upon demand; title to same is never sold/transferred for any reason. This document is to be used only pursuant to written instructions of Johnson Outdoors. All rights to designs and inventions are reserved by Johnson Outdoors. Possession of this document is accepted subject to the foregoing.				DRAWN BY:		DATE:	
.XXXX	±.0010	.X	±.015	THIRD ANGLE PROJECTION		SCALE:		PART NO.: 2374968	
.XXX	±.005	FRACTIONAL	±1/64			0.3:1		B SIZE	
.XX	±.010	ANGULAR	±0°30'			MATERIAL:		REV: 1	
RoHS2 AND REACH COMPLIANCE: Supplier certifies that this part complies with 2011/65/EU (EU RoHS2) and (EC) No 1907/2006 (EU REACH). Upon request, supplier will furnish verification of compliance via: JOI form; supplier declaration or analytical testing referencing JOI part number.				QUALITY REQUIREMENTS: Circled dimensions are critical. Dimensions marked * require Proof of Quality with each shipment.		LIFECYCLE STATUS: Concept		U/M: IN.	SHEET 1 OF 1