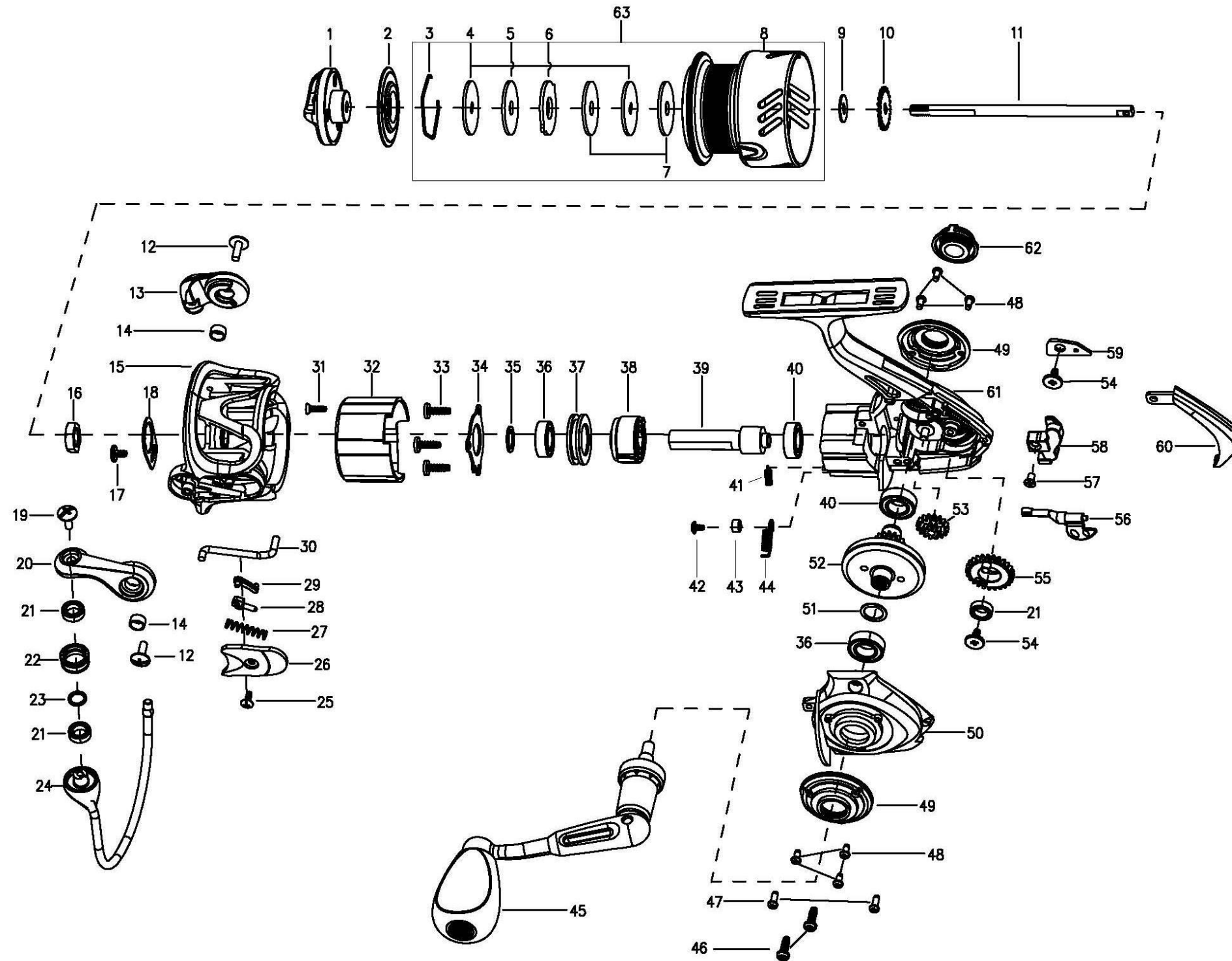


MITCHELL®

Model MAGPRO R 1000



No.	DESCRIPTION	R 1000
15	Rotor	1385419
16	Rotor Nut	1259462
17	Rotor Set Screw	1126258
18	Rotor Set Plate	1346951
19	Line Roller Screw	1126261
20	Bail Arm	1385420
21	Bearing 5*8*2.5(3req)	1112125
22	Line Roller	1252705
23	Washer	1110165
24	Bail Assembly	1385421
25	Screw	1126326
26	Bail Arm Cover	1385422
27	Trip Spring	1126348
28	Bail Slider	1126272
29	Trip Linkage	1252713
30	Trip Bar	1385423
31	Screw	1102139
32	Body Head Cover	1385439
33	Screw(3req)	1092844
34	Pinion Cover	1308703
35	Washer	1114764
36	Bearing 7*13*4(2 req)	1252717
37	Bearing Holder	1385425
38	Clutch Assy	1102144
39	Pinion	1252720
40	Bearing 7*13*4(2 req)	1127926
41	Clutch Spring	1308704
42	Screw	1131798
43	POM Bushing	1279733
44	Clutch Switch Spring	1385426
45	Handle Assembly	1385427
46	Screw(2req)	1085599
47	Screw (2req)	1126084
48	Screw(6req)	1125961
49	Body Trim(2req)	1385428
50	Body Cover	1385429
51	Washer	1114764
52	Drive Gear	1346963
53	Reduction Gear	1252732
54	Screw(2req)	1188428
55	Oscillation Gear	1346964
56	IAR Switch	1385430
57	Screw	1126454
58	Oscillation Slider	1280427
59	Slider Retainer	1385630
60	Rear Cover	1385431
61	Body	1385432
62	Dust Cap	1308709
63	Spool Assembly	1393825

No.	DESCRIPTION	R 1000
1	Drag Knob Assy	1384165
2	Waterproof Ring	1277082
3	Retainer Ring	1085295
4	Key Washer(2req)	1085296
5	Carbon Washer	1126368
6	Eared Washer	1085297
7	Felt Washer(2req)	1252752
8	Spool	1384166
9	Washer(T=0.5)	1178953
10	Click Gear	1126316
11	Main Shaft	1384167
12	Bail Arm Screw(2req)	1309754
13	Bail Holder	1384168
14	Bushing(2req)	1188261

MIT SP Magpro R 1000 01