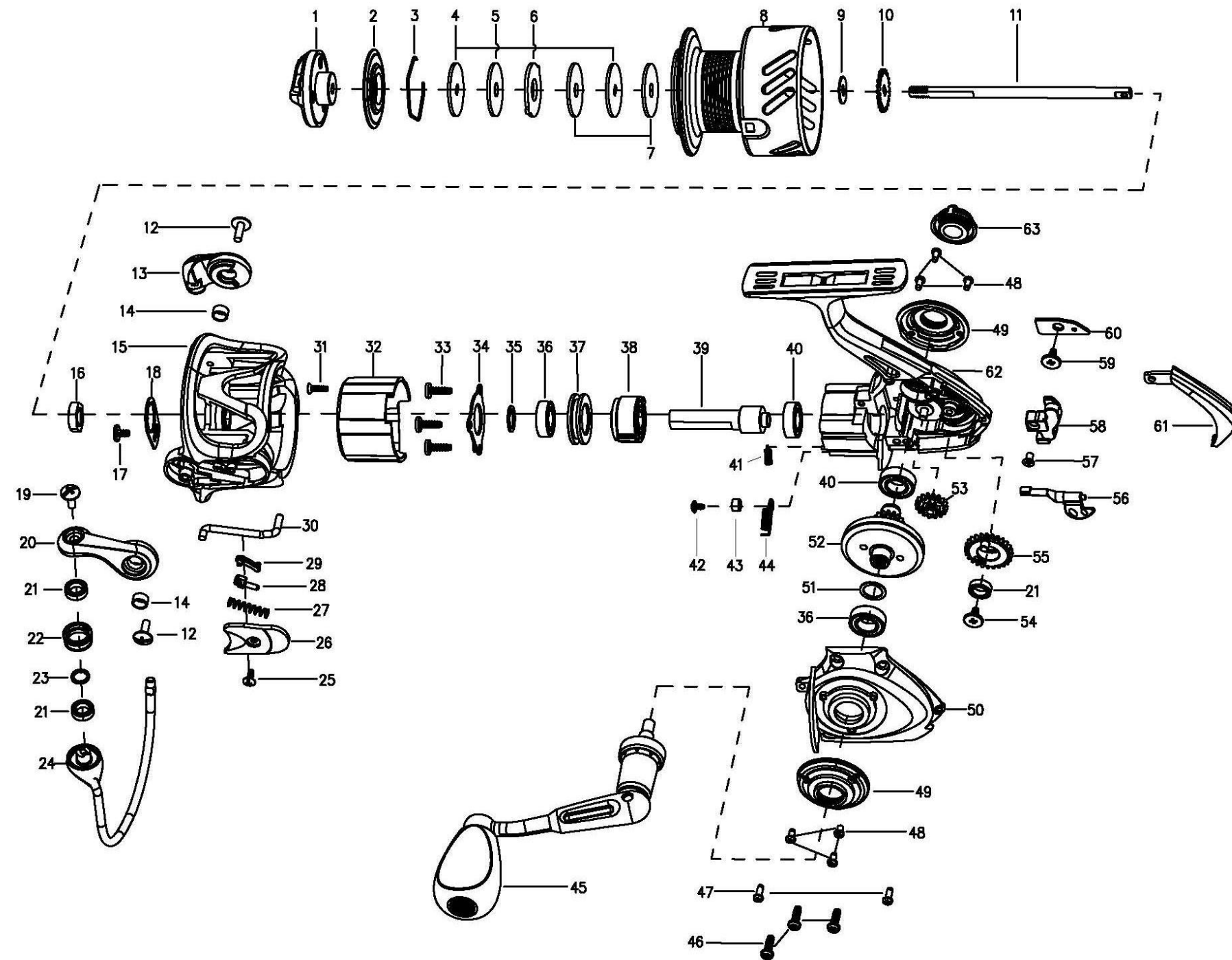


MITCHELL®

Model MAGPRO R 4000



No.	DESCRIPTION	R 4000
15	Rotor	1385449
16	Rotor Nut	1259462
17	Rotor Set Screw	1126258
18	Rotor Set Plate	1346951
19	Line Roller Screw	1126261
20	Bail Arm	1385420
21	Bearing5*8*2.5(3req)	1112125
22	Line Roller	1252705
23	Washer	1110165
24	Bail Assembly	1385450
25	Screw	1126326
26	Bail Arm Cover	1385451
27	Trip Spring	1119106
28	Bail Slider	1126272
29	Trip Linkage	1252713
30	Trip Bar	1385452
31	Screw	1102139
32	Body Head Cover	1385439
33	Screw(3req)	1092844
34	Pinion Cover	1308703
35	Washer	1114764
36	Bearing7*13*4(2 req)	1252717
37	Bearing Holder	1385425
38	Clutch Assy	1102144
39	Pinion	1252720
40	Bearing7*13*4(2 req)	1127926
41	Clutch Spring	1308704
42	Screw	1131798
43	POM Bushing	1279733
44	Clutch Switch Spring	1385426
45	Handle Assembly	1385427
46	Screw(3req)	1085599
47	Screw(2req)	1126084
48	Screw(6req)	1125961
49	Body Trim(2req)	1385428
50	Body Cover	1385454
51	Washer	1114764
52	Drive Gear	1346963
53	Reduction Gear	1252732
54	Screw	1188428
55	Oscillation Gear	1253701
56	IAR Switch	1385430
57	Screw	1126454
58	Oscillation Slider	1279756
59	Screw	1188428
60	Slider Retainer	1131712
61	Rear Cover	1385455
62	Body	1385456
63	Dust Cap	1308709

No.	DESCRIPTION	R 4000
1	Drag Knob Assy	1384165
2	Waterproof Ring	1277082
3	Retainer Ring	1085295
4	Key Washer(2req)	1085296
5	Carbon Washer	1126368
6	Eared Washer	1085297
7	Felt Washer(2req)	1252752
8	Spool	1385448
9	Washer(T=0.5)	1178953
10	Click Gear	1126316
11	Main Shaft	1308694
12	Bail Arm Screw(2req)	1309754
13	Bail Holder	1384168
14	Bushing(2req)	1188261

MIT SP Magpro R 4000 00