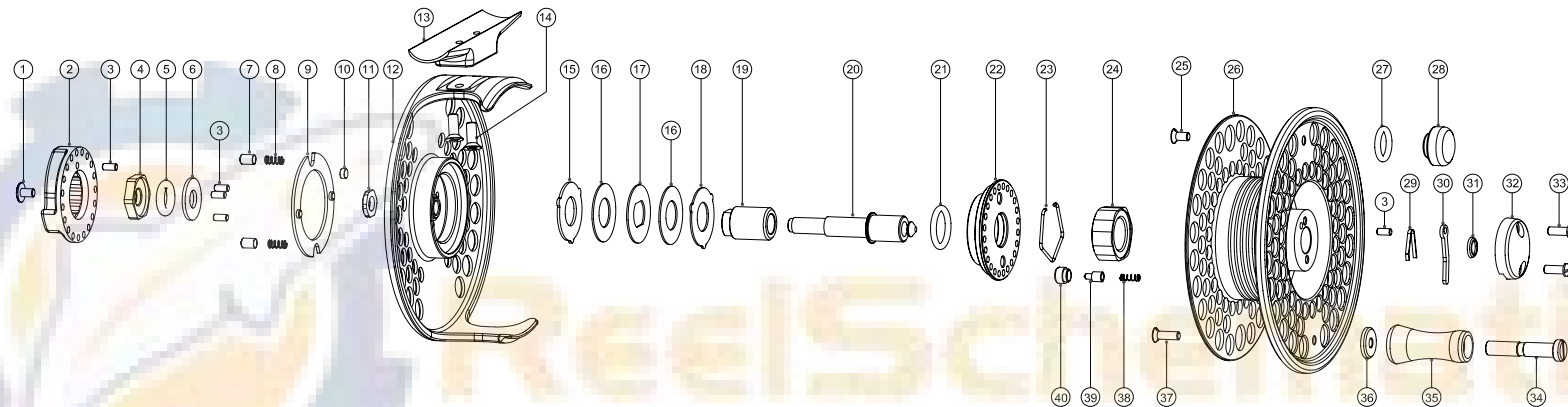




THE ORVIS COMPANY  
 MANCHESTER VERMONT 05254  
 visit orvis.com  
 MADE IN CHINA



- 1** Drag Knob Screw
- 2** Drag Knob
- 3** Pin
- 4** Drag Nut
- 5** O-Ring 3
- 6** Spacer
- 7** Drag Knob Clicker
- 8** Drag Knob Clicker Spring
- 9** Plastic Plate
- 10** Drag Knob Stopper

- 11** Spindle Nut
- 12** Frame
- 13** Foot
- 14** Foot Screw
- 15** Push Plate
- 16** Drag Washer
- 17** Drag Disc 1
- 18** Drag Disc 2
- 19** Bushing
- 20** Spindle

- 21** O-Ring 2
- 22** Frame Lid
- 23** Spring Clip
- 24** One-Way Bearing
- 25** Counter Weight Screw
- 26** Spool
- 27** Q-Ring 1
- 28** Counter Weight
- 29** Quick-Release Spring
- 30** Quick-Release Key

- 31** Quick-Release Cover Pad
- 32** Quick-Release Cover
- 33** Quick-Release Cover Screw
- 34** Handle Shaft
- 35** Handle Knob
- 36** Handle Washer
- 37** Handle Screw
- 38** Clicker Spring
- 39** Clicker
- 40** Clicker Housing

**ORVIS**

ROD AND TACKLE

ACCESS

## INTRODUCTION

With the new fully-sealed drag system of our Access Mid Arbor reel and the benefits of a mid-arbor reel, the Access reel offers maximum line pick up, optimum drag consistency, and superior fish-stopping power.

- Center line drag fully sealed with a carbon and stainless steel surface to fight big fish
- Precision-machined and anodized from 6061 aircraft-grade aluminum
- Heavily ventilated for optimum weight and balance on your fly rod
- Indexed and numbered drag knob for repeatable drag adjustment
- Easily interchangeable spool

## DRAG OPERATION

Access reels feature a dependable center line drag system. To adjust the drag, turn the knob (figure 1) clockwise to increase resistance, and counter-clockwise to decrease it. The minimum drag setting should never be less than the pressure required to prevent over-running of the line on fast runs. Additional drag may be applied by palming the spool rim with your fingers or palm. The easy drag adjustment is infinitely variable, providing wide-ranging and controllable settings.



FIGURE 1

## SPOOL REMOVAL

The spool release is located in the middle of the reel spool. To remove, depress the spool release latch while simultaneously lifting the spool out of the reel body.

## RIGHT-HAND CONVERSION

All Access Mid Arbor reels have the drag factory installed for left-hand wind (figure 2). To change your reel to right-hand wind, unclip the one-way retainer (part #23) by squeezing the retaining tags. Remove one-way bearing (part #24) and flip over. Replace clutch retainer.



FIGURE 2 (PART #23)

## ROUTINE MAINTENANCE

Your new Access Mid Arbor reel has been properly lubricated prior to shipping. However, it should be cleaned and lubricated after extensive use or after contact with dirt or sand. Your reel should receive routine cleaning and maintenance at least twice each year. Lightly lubricate all moving components—handle, center spindle, and gear shaft with Penn reel lube, which is available in tackle shops. Do not put the reel away wet, or into a wet reel case or tackle box. For extended storage, remove both line and backing and loosen the drag.

## ACCESS MID ARBOR | TROUT Capacity Chart

LINE WEIGHT	I	II	III	IV	V*
WF1	100				
WF2	75				
WF3	50	150			
WF4		125			
WF5		100	150		
WF6			125		
WF7			100	225	
WF8				200	
WF9				175	250
WF10					225
WF11					200

## Access Mid Arbor Trout Fly Reel Specifications

**I Reel** | weight: 4.2 oz. | 2¾ inches

**IV Reel** | weight: 5.2 oz. | 3½ inches

**II Reel** | weight: 4.3 oz. | 3 inches

**V Reel** | weight: 5.7 oz. | 4 inches

**III Reel** | weight: 4.5 oz. | 3¼ inches

## Capacity in Yards

All capacities are quoted using 20-lb Dacron® backing.

\* Access V reel is quoted using 30-lb Dacron® backing.

## GUARANTEE

Your Access Mid Arbor trout reel is unconditionally guaranteed against defects in materials and workmanship.

If you have any problems, simply send your reel and a \$10 check to the following address:

**By USPS Mail:** Orvis; Overhaul Services; 178 Conservation Way; Sunderland, VT 05250.

**By FedEx or UPS:** Orvis; Overhaul Services; 4182 Main St.; Manchester, VT 05254. If the reel is in any way defective in material or workmanship, your \$10 repair check will be returned to you at once.

Your reel will be completely serviced (cleaned, lubricated, and returned to you postpaid) for a fee of \$10, plus cost of parts.

Damaged reels can be repaired on an individual basis and repair work will be billed at the hourly shop rate, plus parts. We will provide a written estimate upon receipt of the reel prior to any work being done.

## QUESTIONS?

If you have any questions about the operation and maintenance of your new reel, Orvis Technical Advisors are always available. Email: [info@orvis.com](mailto:info@orvis.com). Phone: 1-800-778-4778.