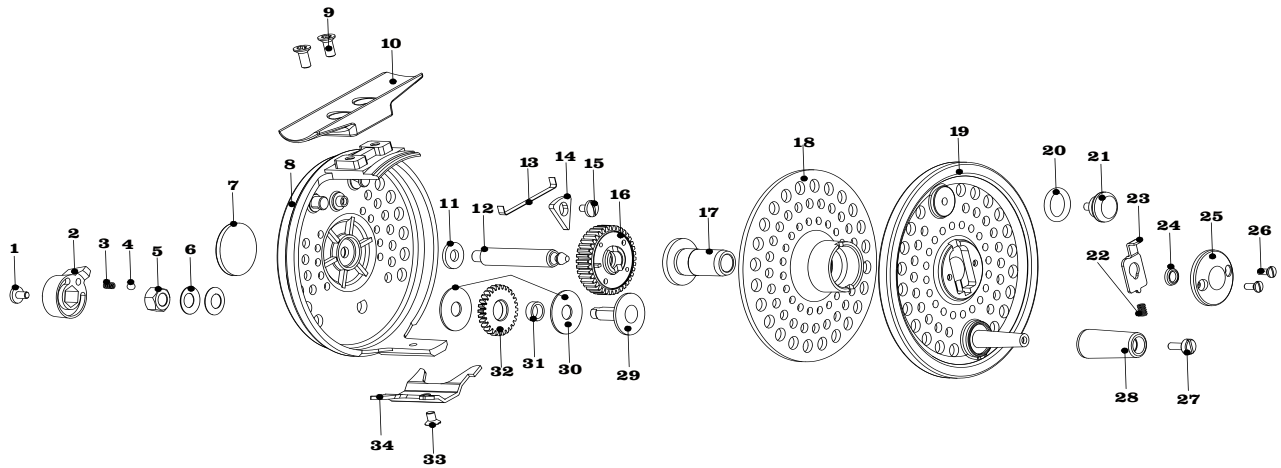


# ORVIS®

## ROD AND TACKLE

### Original Battenkill® Disc Reel



#### REEL ASSEMBLY

- |                          |                                   |                            |                             |
|--------------------------|-----------------------------------|----------------------------|-----------------------------|
| <b>1</b> Drag Knob Screw | <b>10</b> Foot                    | <b>19</b> Front Spool      | <b>28</b> Handle Knob       |
| <b>2</b> Drag Knob       | <b>11</b> Spindle Washer          | <b>20</b> O-Ring           | <b>29</b> Drag Spindle      |
| <b>3</b> Click Spring    | <b>12</b> Center Spindle          | <b>21</b> Counter Weight   | <b>30</b> Drag Washer       |
| <b>4</b> Click Ball      | <b>13</b> Clicker Pawl Spring     | <b>22</b> Q/R Spring       | <b>31</b> Drag Gear Bearing |
| <b>5</b> Nut             | <b>14</b> Clicker Pawl            | <b>23</b> Q/R Lever        | <b>32</b> Drag Gear         |
| <b>6</b> Disc Spring     | <b>15</b> Clicker Retaining Screw | <b>24</b> Cover Pad        | <b>33</b> Line Guard Screw  |
| <b>7</b> Logo Label      | <b>16</b> Drive Gear Assembly     | <b>25</b> Q/R Cover        | <b>34</b> Line Guard        |
| <b>8</b> Body            | <b>17</b> Spool Gearing           | <b>26</b> Q/R Cover Screws |                             |
| <b>9</b> Foot Screws     | <b>18</b> Rear Spool              | <b>27</b> Knob Screw       |                             |

#### ORIGINAL BATTENKILL DISC REELS Capacity Chart

LINE WEIGHT	3/4	5/6	7/8
<b>WF3</b>	<b>100</b>		
<b>WF4</b>	<b>75</b>		
<b>WF5</b>	<b>50</b>	<b>100</b>	
<b>WF6</b>		<b>75</b>	<b>125*</b>
<b>WF7</b>		<b>50</b>	<b>100*</b>
<b>WF8</b>			<b>75*</b>

#### Battenkill Fly Reel Specifications

- 3/4 Reel** | weight: 4.2 oz. | 2<sup>7</sup>/<sub>8</sub> inches
- 5/6 Reel** | weight: 4.7 oz. | 3<sup>1</sup>/<sub>8</sub> inches
- 7/8 Reel** | weight: 5.8 oz. | 3<sup>3</sup>/<sub>8</sub> inches

#### Capacity in Yards

Stated capacities are based on Orvis 20-lb Dacron® backing and a 100-foot weight-forward floating fly line. \*30-lb Dacron backing.

# ORVIS®

## ROD AND TACKLE

### Original Battenkill® Disc Reel

#### INTRODUCTION

Features of your Battenkill Disc reel include:

- The best selling reel of all time, Battenkill Disc reels are designed to be durable, smooth operating, and attractive.
- Counterweighted spools for vibration-free operation at high revolutions.
- Anodized aluminum or stainless steel for complete corrosion resistance.
- Spools have bronze bushings so there is no distortion when spinning against the hard shaft.
- All models change from right- to left-hand retrieve in seconds.
- One-sided frame permits quick and easy spool changes with no line pinching.
- The spool rim is exposed for easy palming and precise control of running fish.

#### DRAG OPERATION

The Battenkill Disc reels feature a multistage disc drag system that incorporates stainless steel, Rulon®, and brass components to ensure smooth trouble-free performance.

The drag should be adjusted to meet the fishing conditions. To adjust the drag, turn the drag adjustment knob clockwise (+) to increase the drag and counter-clockwise (-) to decrease the drag. The minimum drag setting should never be less than the pressure required to prevent overrunning of the line on fast runs.



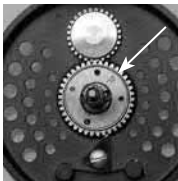
#### SPOOL REMOVAL

The spool release is located in the middle of the reel spool. To remove the spool, depress the spool release while simultaneously lifting the spool out of the body.



#### RETRIEVAL CONVERSION

The Battenkill Disc reels have the drag factory installed for left-hand wind. To change your reel to right-hand wind, simply slide the ratchet gear off the center spindle, turn it over so the "R" faces toward you, and slide the ratchet gear back over the center spindle. The reel is now set for right-hand wind.



#### ROUTINE MAINTENANCE

Your new Battenkill reel has been properly lubricated when you receive it. However, it should be cleaned and lubricated after extended use (perhaps twice a year) or after contact with dirt, sand, or salt. Lubricate the handles, pawls, and ratchet gear shaft with Penn Reel Lube, which is available in most tackle shops. If you can't find this item in your tackle shops, tubes are available from Orvis at a nominal charge.

Following each use in saltwater, the reel should be rinsed in freshwater and all parts, except the drag surfaces, lightly oiled. The main frame and spool should be wiped with a lightly oiled cloth. For extended storage, especially after saltwater use, it is recommended that the line and backing be removed and the drag loosened.

#### GUARANTEE

Your reel is unconditionally guaranteed against defects in materials and workmanship.

If you have any problems, simply send your reel and a \$10 check to the following address:

**By USPS Mail:** Orvis; Overhaul Services; 178 Conservation Way; Sunderland, VT 05250.

**By FedEx or UPS:** Orvis; Overhaul Services; 4182 Main St.; Manchester, VT 05254.

If the reel is in any way defective in materials or workmanship, your \$10 repair check will be returned to you at once.

Your reel will be completely serviced (cleaned, lubricated, and returned to you postpaid) for a fee of \$10, plus cost of parts.

Damaged reels can be repaired on an individual basis and repair work will be billed at the hourly shop rate, plus parts. We will provide a written estimate upon receipt of the reel prior to any work being done.

#### QUESTIONS?

If you have any questions about the operation and maintenance of your new reel, Orvis Technical Advisors are always available.

Email: [info@orvis.com](mailto:info@orvis.com). Phone: 1-800-778-4778.