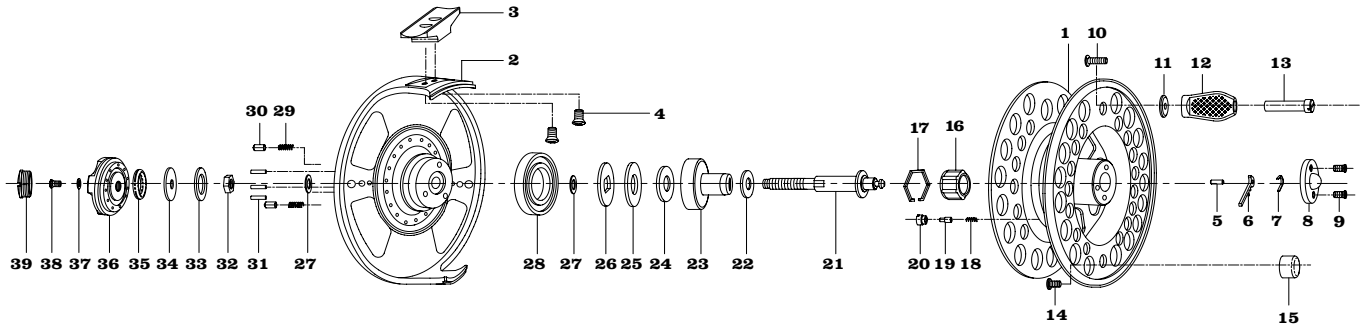


# ORVIS®

## ROD AND TACKLE

### Battenkill Large Arbor Reel



#### REEL ASSEMBLY

- |                                |                              |                             |                                |
|--------------------------------|------------------------------|-----------------------------|--------------------------------|
| <b>1</b> Spool                 | <b>11</b> Handle Collar      | <b>21</b> Main Shaft        | <b>31</b> Drag Plate Pin       |
| <b>2</b> Housing               | <b>12</b> Handle Knob        | <b>22</b> Disk Plate I      | <b>32</b> Main Shaft Nut       |
| <b>3</b> Reel Foot             | <b>13</b> Handle Rivet       | <b>23</b> Sleeve            | <b>33</b> Drag Rear Washer I   |
| <b>4</b> Reel Foot Screw       | <b>14</b> Balance Screw      | <b>24</b> Disk Plate II     | <b>34</b> Drag Rear Washer II  |
| <b>5</b> Push Head Pin         | <b>15</b> Handle Balance     | <b>25</b> Disk Plate III    | <b>35</b> Drag Rear Washer III |
| <b>6</b> Push Head             | <b>16</b> One-Way Bearing    | <b>26</b> Drag Plate        | <b>36</b> Drag Knob            |
| <b>7</b> Push Head Spring      | <b>17</b> One-Way Retainer   | <b>27</b> Guide Washer      | <b>37</b> Drag Knob Lock W/S   |
| <b>8</b> Push Head Cover       | <b>18</b> Spool Click Spring | <b>28</b> Reel Bearing      | <b>38</b> Drag Knob Screw      |
| <b>9</b> Push Head Cover Screw | <b>19</b> Spool Click Pin    | <b>29</b> Drag Click Spring | <b>39</b> Drag Knob Cap        |
| <b>10</b> Handle Screw         | <b>20</b> Spool Click Nut    | <b>30</b> Drag Click Pin    |                                |

#### BATTENKILL LARGE ARBOR REEL Capacity Chart

LINE WEIGHT	IV	V	VI
<b>WF7</b>	<b>225</b>		
<b>WF8</b>	<b>200</b>		
<b>WF9</b>	<b>175</b>	<b>250</b>	
<b>WF10</b>		<b>225</b>	
<b>WF11</b>		<b>200</b>	<b>350</b>
<b>WF12</b>			<b>325</b>
<b>WF13</b>			<b>300</b>

#### Battenkill Large Arbor Fly Reel Specifications

**IV Reel** | weight: 6.9 oz. | 4 inches

**V Reel** | weight: 8.3 oz. | 4¼ inches

**VI Reel** | weight: 9 oz. | 4½ inches

#### Capacity in Yards

Stated capacities are quoted using 30-lb Dacron® backing and Orvis Wonderline™, a standard weight-forward floating fly line.

# ORVIS®

## ROD AND TACKLE

### Battenkill Large Arbor Reel

#### INTRODUCTION

With the proven drag system of our Battenkill Mid Arbor Reel and the benefits of a large arbor reel, the BLA reel offers maximum line pick up, optimum drag consistency, and superior fish-stopping power.

- Center line drag with glass composite drag surface to fight big fish
- Precision-machined and anodized from 6061 aircraft-grade aluminum
- Heavily ventilated for optimum weight and balance on your fly rod
- Indexed and numbered drag knob for repeatable drag adjustment
- Easily interchangeable spool

#### DRAG OPERATION

Battenkill Large Arbor reels feature a dependable center line drag system.

To adjust the drag, turn the knob (figure 1) clockwise to increase resistance, and counter-clockwise to decrease it. The minimum drag setting should never be less than the pressure required to prevent over-running of the line on fast runs. Additional drag may be applied by palming the spool rim with your fingers or palm.

The easy drag adjustment is infinitely variable, providing wide-ranging and controllable settings.



FIGURE 1

#### SPOOL REMOVAL

The spool release is located in the middle of the reel spool (figure 2). To remove, depress the spool release latch while simultaneously lifting the spool out of the reel body.

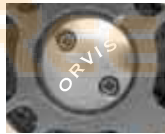


FIGURE 2

#### RETRIEVAL CONVERSION

All Battenkill Large Arbor reels have the drag factory installed for left-hand wind (figure 3). To change your reel to right-hand wind, unclip the one-way retainer (part #17) by squeezing the retaining tags. Remove one-way bearing (part #16) and flip over. Replace clutch retainer.



FIGURE 3

#### ROUTINE MAINTENANCE

Your new Battenkill Large Arbor reel has been properly lubricated prior to shipping. However, it should be cleaned and lubricated after extensive use or after contact with dirt or sand. Your reel should receive routine cleaning and maintenance at least twice each year. Lightly lubricate all moving components—handle, center spindle, and gear shaft with Penn reel lube, which is available in tackle shops. Do not put the reel away wet, or into a wet reel case or tackle box. For extended storage, remove both line and backing and loosen the drag.

#### GUARANTEE

Your reel is unconditionally guaranteed against defects in materials and workmanship.

If you have any problems, simply send your reel and a \$10 check to the following address:

**By USPS Mail:** Orvis; Overhaul Services; 178 Conservation Way; Sunderland, VT 05250.

**By FedEx or UPS:** Orvis; Overhaul Services; 4182 Main St.; Manchester, VT 05254.

If the reel is in any way defective in materials or workmanship, your \$10 repair check will be returned to you at once.

Your reel will be completely serviced (cleaned, lubricated, and returned to you postpaid) for a fee of \$10, plus cost of parts.

Damaged reels can be repaired on an individual basis and repair work will be billed at the hourly shop rate, plus parts. We will provide a written estimate upon receipt of the reel prior to any work being done.

#### QUESTIONS?

If you have any questions about the operation and maintenance of your new reel, Orvis Technical Advisors are always available.

Email: [info@orvis.com](mailto:info@orvis.com). Phone: 1-800-778-4778