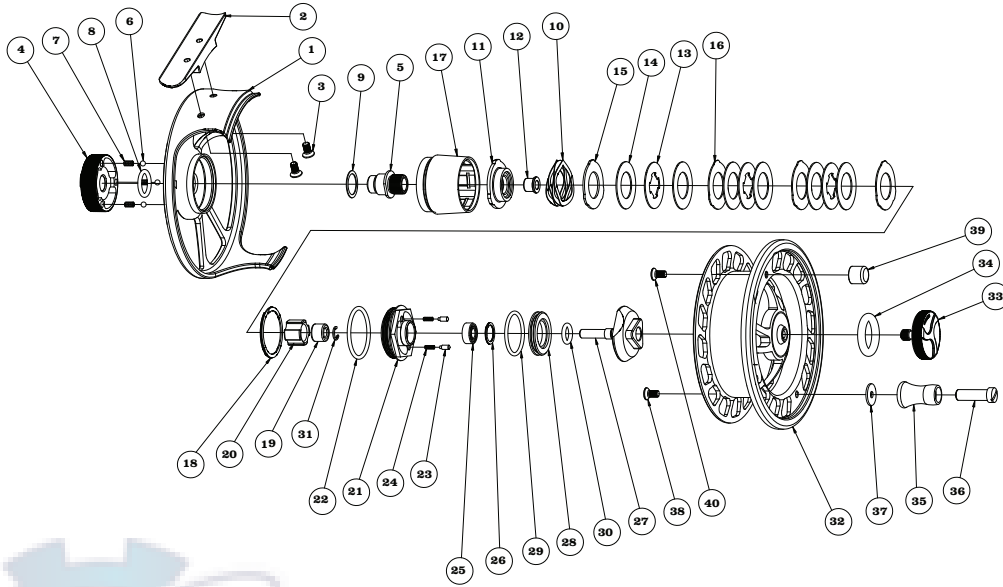


# ORVIS®

## ROD AND TACKLE

### Mirage



- |                          |                               |                         |                         |
|--------------------------|-------------------------------|-------------------------|-------------------------|
| 1 Frame                  | 11 Drag Spring Plate          | 21 Frame Cap            | 31 Shaft Retainer       |
| 2 Foot                   | 12 Bushing                    | 22 Frame Cap O-Ring     | 32 Spool                |
| 3 Foot Screw             | 13 Drag Metal Disc            | 23 Clicker              | 33 Spool Knob           |
| 4 Drag Knob              | 14 Friction Disc              | 24 Clicker Spring       | 34 Spool Knob O-Ring    |
| 5 Drag Knob Insert       | 15 Friction Disc Support 0.8t | 25 Main Bearing         | 35 Handle Knob          |
| 6 Drag Knob Click Ball   | 16 Friction Disc Support 0.5t | 26 Bearing Retainer     | 36 Handle Shaft         |
| 7 Drag Knob Click Spring | 17 Drag Case                  | 27 Shaft                | 37 Handle Knob Washer   |
| 8 Frame O-Ring           | 18 Drag Stack Retainer        | 28 Clicker Plate        | 38 Handle Screw         |
| 9 Drag Knob Washer       | 19 Clutch Bearing             | 29 Clicker Plate O-Ring | 39 Counter Weight       |
| 10 Wave Washer           | 20 Clutch Sleeve              | 30 Shaft O-Ring         | 40 Counter Weight Screw |

**Mirage Big Game Reel Capacity Chart**

LINE WEIGHT	II	III	IV	V	VI	VII SHALLOW	VII DEEP
WF3	150 yds*						
WF4	125 yds*						
WF5	100 yds*	150 yds*					
WF6		125 yds*					
WF7		100 yds*	225 yds*				
WF8			200 yds*				
WF9			175 yds*	250 yds**			
WF10				225 yds**			
WF11				200 yds**	350 yds**	350 yds**	
WF12					325 yds**	325 yds**	
WF13					300 yds**	300 yds**	
WF14							600 yds***

**Capacity in Yards**

\* 20-lb Dacron Backing | \*\*30-lb Dacron Backing | \*\*\*50-lb Gel Spun Backing

**Mirage Big Game Reel Specifications**

Reel Size	Weight	Diameter
II	4.3 oz.	3½"
III	4.8 oz.	3¾"
IV	7.2 oz.	4"
V	7.7 oz.	4¼"
VI	10 oz.	4½"
VII - Shallow	11.7 oz	5"
VII - Deep	11.5 oz.	5"

# ORVIS®

## ROD AND TACKLE

### Mirage

#### INTRODUCTION

The Mirage Reel combines superior performance and a great price to put it in a class by itself. Using the same principles employed in the brakes of fighter jets, the carbon to stainless drag gives smooth, consistent and infinitely adjustable stopping power.

- A completely sealed and maintenance free drag impervious to saltwater, dirt, grit and other corrosive elements.
- An indexed drag knob with positive clicks for accurate and repeatable drag settings.
- True large arbor performance that picks up line fast to give you the edge over fresh and saltwater species.
- Crafted from strong yet lightweight 6061 T6 aluminum to give the optimal combination of weight and strength.

#### DRAG OPERATION

The Mirage reels feature a dependable center line drag system. To adjust the drag, turn the drag knob (# 4) clockwise to increase resistance, and counterclockwise to decrease it (figure 1). The minimum drag setting should never be less than the pressure required to prevent over-running of the line on fast runs. The easy drag adjustment is infinitely variable, providing wide-ranging and controllable settings.

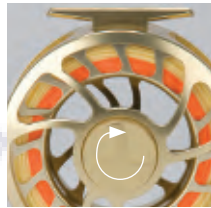


FIGURE 1

#### SPOOL REMOVAL

The spool release knob (#33) is located in the middle of the spool. To remove, grip the knurling on the knob and aggressively turn counterclockwise until the spool disengages from the frame (figure 2). **NOTE:** It's best not to back off the spool release knob completely as it can fall off—it only needs to be loosened enough to free the spool from the frame



FIGURE 2

#### RIGHT-HAND CONVERSION

All Mirage Big Game reels have the drag factory installed for left-hand wind. Since the reel is fully sealed, the frame cap must be removed to access the one way bearing. **Step 1:** Remove the spool from the frame as described above. **Step 2:** Back the drag knob completely off by turning it counter clockwise until it stops. **Step 3:** Align the tool provided on the flats machined into the frame cap (#21) (figure 3). **Step 4:** While holding the frame firmly, rotate the tool counterclockwise to break the seal and unthread the shaft assembly (#27 and #21) from the drag case (#17) (Figure 4). **Step 5:** Before removing the shaft assembly from the frame, rotate the drag knob clockwise two revolutions to tighten the drag. **Step 6:** Remove the shaft assembly. The clutch bearing (#20) will either come out with the shaft assembly, or stay nested in the drag case. If it stays nested in the drag case, just turn the frame over and tap it on a hard surface and the bearing will fall out. **Step 7:** Flip over the clutch bearing and put it back in the drag case. (Figure 4) **Step 8:** Insert the frame assembly in the drag case and re-tighten the shaft assembly to the frame with the tool. **NOTE:** If you misplace the tool, you can easily loosen the shaft assembly from the frame with an

adjustable wrench by lining up the flats machined in the shaft (#27) with the flats in the frame cap (#21). (Figure 5) Otherwise the drag conversion process is the same.



FIGURE 3

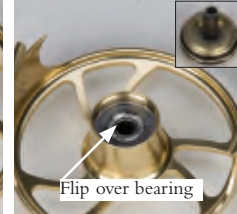


FIGURE 4



FIGURE 5

#### ROUTINE MAINTENANCE

Your new Mirage Big Game reel is has been properly lubricated prior to shipping. The drag system is completely sealed and impervious to corrosive elements. It requires no additional maintenance. After the reel has been used in saltwater, or if it experiences excessive contact with dirt or sand, the spool should be removed from the frame and both parts should be rinsed with fresh water. **NOTE:** When not in use, the drag should be loosened completely.

#### GUARANTEE

Your Mirage Saltwater reel is unconditionally guaranteed against defects in materials and workmanship.

If you have any problems, simply send your reel and a \$10 check to the following address:

**By USPS Mail:** Orvis; Overhaul Services; 178 Conservation Way; Sunderland, VT 05250.

**By FedEx or UPS:** Orvis; Overhaul Services; 4182 Main St.; Manchester, VT 05254.

Your reel will be completely serviced (cleaned, lubricated, and returned to you postpaid) for a fee of \$10, plus cost of parts. If the reel is in any way defective in material or workmanship, your \$10 repair check will be returned to you at once.

Damaged reels can be repaired on an individual basis and repair work will be billed at the hourly shop rate, plus parts. We will provide a written estimate upon receipt of the reel prior to any work being done.

#### QUESTIONS?

If you have any questions about the operation and maintenance of your new reel, Orvis Technical Advisors are always available. Email: [info@orvis.com](mailto:info@orvis.com). Phone: 1-800-778-4778.