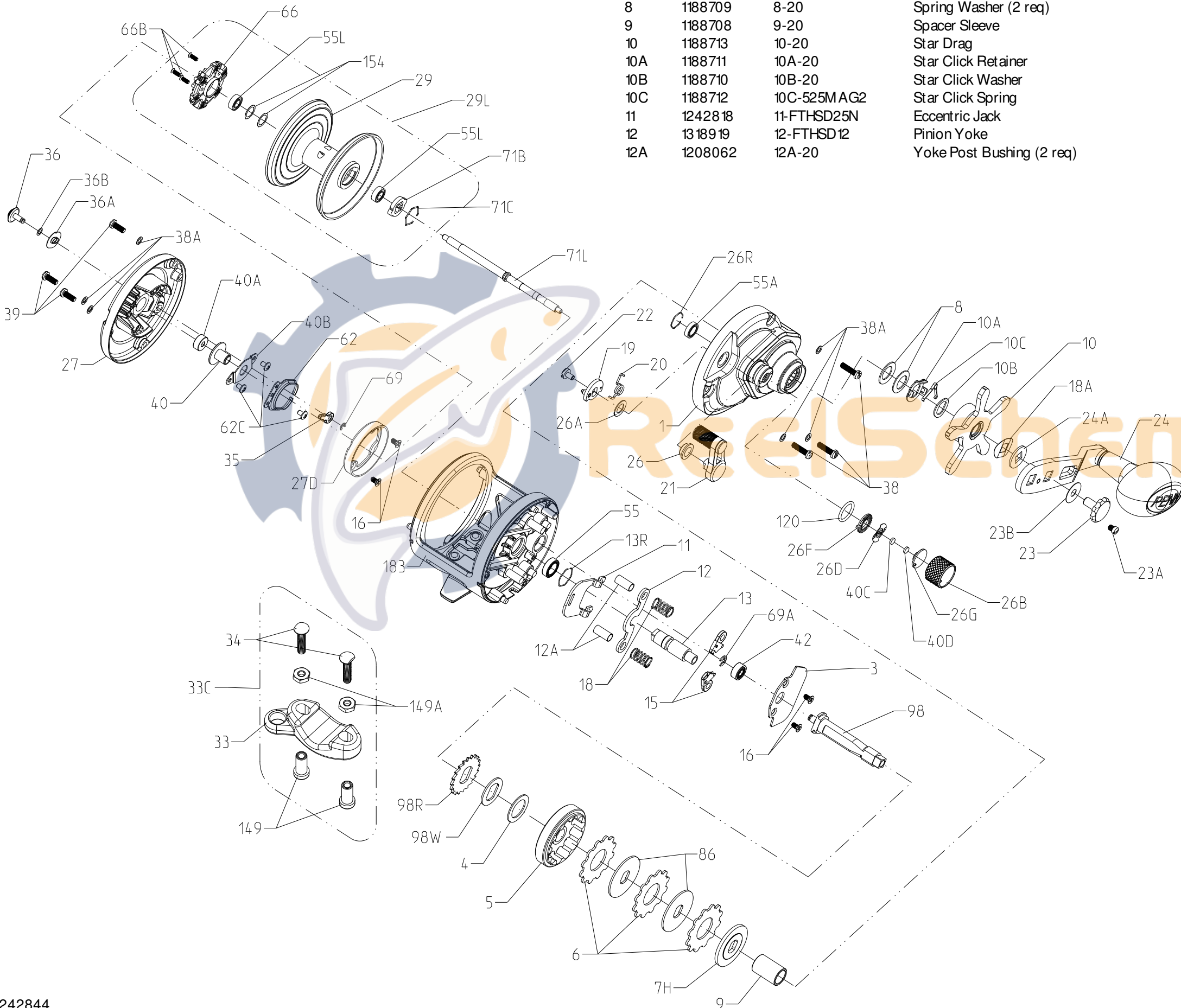




PARTS LIST FOR MODEL FATHOM SD 40
REEL PART NO. 1238446



Key No.	Part No.	PENN Style No.	Description	Key No.	Part No.	PENN Style No.	Description
1	1242825	1-FTHSD40	Right Side Plate	13	1242790	13-FTHSD12	Pinion
3	1242817	3-FTHSD25N	Bridge	13R	1229364	13R-TRQ40	Retaining Ring
4	1180775	4-349	Drag Washer	15	1188675	15-20	Anti Reverse Dog (2 req)
5	1242789	5-FTHSD12	Main Gear	16	1188686	16-20	Bridge Screw (4 req)
6	1237037	6-TRQ40	Drag Washer Tab (3 req)	18	1188688	18-20	Pinion Yoke Spring (2 req)
7H	1242788	7H-FTHSD12	Heavy Metal Drag Washer	18A	1188714	18A-20	Keyed Spring Washer
8	1188709	8-20	Spring Washer (2 req)	19	1188691	19-20	Eccentric
9	1188708	9-20	Spacer Sleeve	20	1242806	20-FTHSD12	Eccentric Spring
10	1188713	10-20	Star Drag	21	1242831	21-FTHSD25N	Eccentric Lever
10A	1188711	10A-20	Star Click Retainer	22	1188690	22-20	Eccentric Screw
10B	1188710	10B-20	Star Click Washer	23	1208117	23-FTH20LW	Handle Screw
10C	1188712	10C-525MAG2	Star Click Spring	23A	1188717	23A-20	Handle Lock Screw
11	1242818	11-FTHSD25N	Eccentric Jack	23B	1207784	23B-20	Handle Screw Washer
12	1318919	12-FTHSD12	Pinion Yoke	24	1242787	24-FTHSD12	Handle Assembly
12A	1208062	12A-20	Yoke Post Bushing (2 req)	24A	1188715	24A-20	Handle Thrust Washer
				26	1188692	26-20	Bushing
				26A	1242792	26A-FTHSD12	Washer
				26B	1208114	26B-FTH20LW	Spool Tension Control Cap
				26D	1125769	26D-525MAG2	Click Spring
				26F	1125768	26F-525MAG2	Click Plate A
				26G	1125772	26G-525MAG2	Click Plate B
				26R	1214654	26R-525MAG2	Ring Retaining
				27	1242826	27-FTHSD40	Left Side Plate
				27D	1242794	27D-FTHSD12	Centrifugal Brake Path
				29	1242827	29-FTHSD40	Spool
				29L	1242839	29L-FTHSD40	Spool Assembly
				33	1182754	33-113	Rod Clamp
				33C	1229936	33C-TRQ40	Rod Clamp Kit
				34	1182788	34-45	Screw (2 req)
				35	1188656	35-20	Click Tongue
				36	1242819	36-FTHSD25N	Click Button
				36A	1208113	36A-FTH20LW	Click Washer
				36B	1188651	36B-20	Click PVC Washer
				38	1188698	38-20	Screw (3 req)
				38A	1188649	38A-20	Flat Washer (6 req)
				39	1188638	39-20	Screw (3 req)
				40	1230004	40-TRQ40	Bushing L.S. Spool
				40A	1242804	40A-FTHSD12	Bearing
				40B	1242805	40B-FTHSD12	Protector Bearing
				40C	1208115	40C-525MAG2	Washer, Metal Thrust
				40D	1125771	40D-525MAG2	Washer, Rubber Thrust
				42	1188661	42-20	Ball Bearing
				55	1214665	55-525MAG2	Ball Bearing
				55A	1214666	55A-525MAG2	Ball Bearing 6x10x2.5
				55L	1192031	55L-965	Ball Bearing (2 req)
				62	1188664	62-20	Click Spring
				62C	1188654	62C-20	Screw (3 req)
				66	1242797	66-FTHSD12	Centrifugal Brake
				66B	1242798	66B-FTHSD12	Screw (3 req)
				69	1188657	69-20	Retainer
				69A	1188659	69A-20	Retainer
				71B	1230226	71B-TRQ40	Spool Driver
				71C	1230227	71C-TRQ40	Retaining Ring
				71L	1242828	71L-FTHSD40	Spool Shaft
				86	1184251	86-49L	Drag Washer Keyed (2 req)
				98	1188700	98-20	Main Gear Shaft
				98R	1242800	98R-FTHSD12	Anti Reverse Ratchet
				98W	1242801	98W-FTHSD12	Ratchet Thrust Washer
				120	1184522	120113H	O-ring
				149	1184702	149-45	Nut, Rod Clamp (2 req)
				149A	1184706	149-200	Nut, Hex (2 req)
				154	1242803	154-FTHSD12	Shim (As Needed)
				183	1242829	183-FTHSD40	Frame Assembly