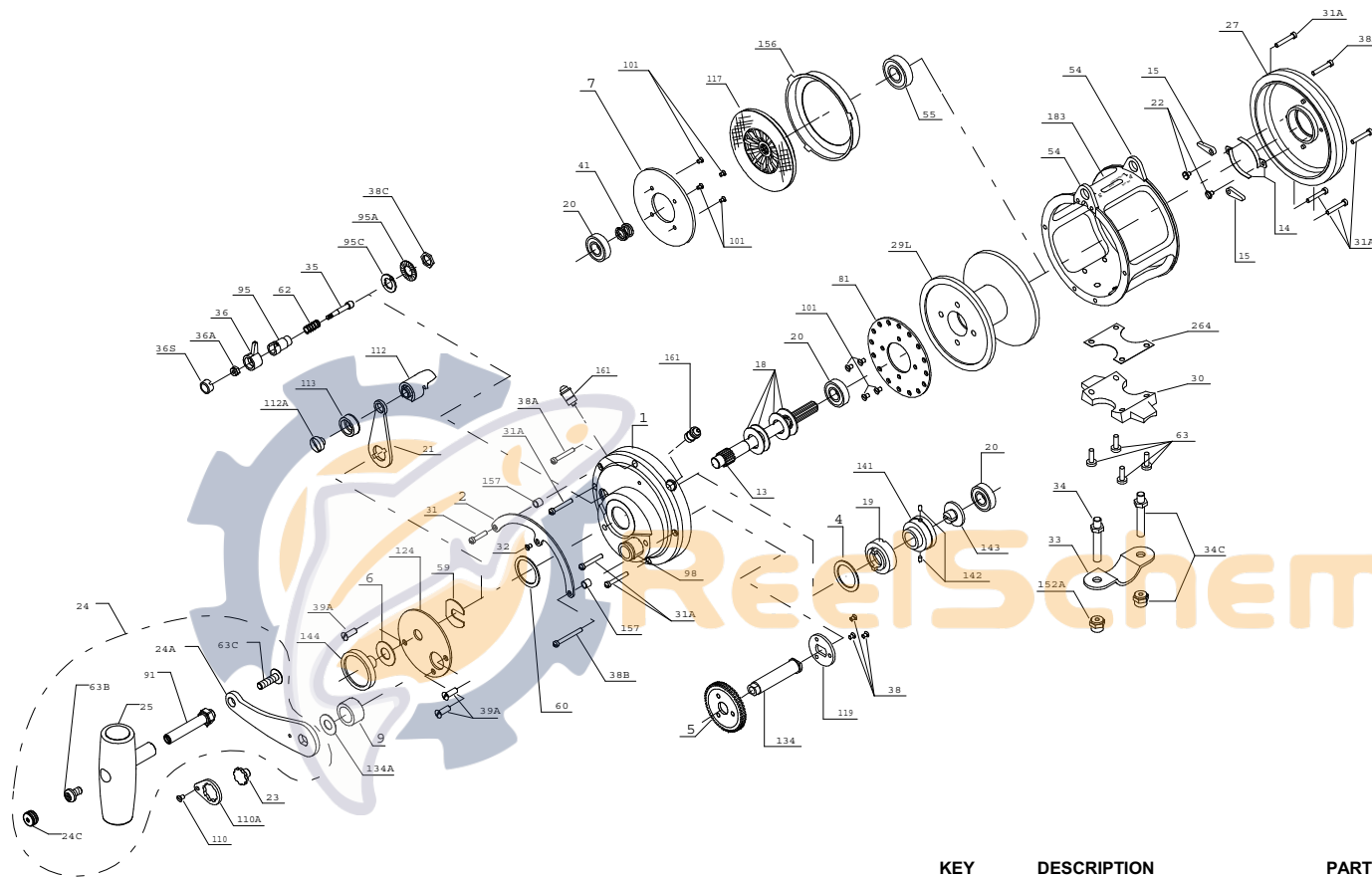




**PARTS LIST FOR MODEL 20T**



KEY NO.	DESCRIPTION	PART NO.	PART NO.
24	Handle Complete	024 030TW	024 030TW-1
24A	Handle Blank Only	024C050	
24C	Handle Knob Cap	025 050	
25	Handle Knob	027 020T	
27	L.S. Plate Assembly	029L 020	
29L	Spool	030 020T	
30	Stand	031T020	
31	Short Quadrant Screw	031T080	
31A	Frame Screw (7 req.)	032T020	
32	Center Quadrant Screw	033 049	
33	Rod Clamp	034 030T	
34	Rod Clamp Screw (2 req.)	034C030T	
34C	Rod Clamp Screw w/Nut	035 050N	
35	Click Tongue	036N050	
36	Click Button	036 700	
36A	Click Button Nut	036S080ST	
36S	Click Button Cap	038N007	
38	Coupling Plate Screw (3 req.)	038T050	
38A	Frame Screw (2 req.)	038T080	
38B	Long Quadrant Screw	038 710	
38C	Click Bushing Nut	039A 080S	
39A	Bridge Cover Screw (3 req.)	041 050	
41	L.S. Bearing Spring	046A704	
*	Cam Housing Screw (2 req.)	054 030T	
54	Harness Lug (2 req.)	055 080	
55	Left-Side Bearing	059 050	
59	Slotted Washer	060 050	
60	Backing Washer	062 050	
62	Click Spring	063 030T	
63	Stand Screw (4 req.)	063 050	
63B	Long Screw	063A050	
63C	Screw	081 050	
81	Ratchet	091N050	
91	Handle Rivet	095 050	
95	Click Tongue Bushing	095A020	
95A	Click Bushing Washer	095A050	
95C	Click Bushing Washer	098 030TN	
98	Bridge Bushing	101 030	
101	Drive Plate Screw (8 req.)	110 050	
110	Handle Lock Screw	110A050	
110A	Handle Locking Plate	112 050	
112	Eccentric Lever Knob	112A050	
112A	Eccentric Lever Screw	113 050	
113	Eccentric Lever Cap	117D030	
117	Drive Plate w/Drwg Washer	119 050	
119	Coupling Plate	124 030	
124	Bridge Cover	125 030	
124 030	Bridge Cover	134 050	
*	Cam Housing	134A050	
134	Gear Stud	141 030	
134A	Gear Stud Washer	142 050	
141	Cam Follower	143 030	
142	Follower Pin (2 req.)	144 050	
143	Adjusting Screw	152A030T	
144	Preset Knob	156 030	
152A	Rod Clamp Acorn Nut (2 req.)	157 050	
156	Drag Cover	161C070	
157	Quadrant Spacer Bushing (2 req.)	183 020T	
161	Locating Pin Assembly (2 req.)	264 030T	
183	Tube Frame		
264	Stand Gasket		

KEY NO.	DESCRIPTION	PART NO.
1	R.S. Plate Assembly	001 020TN
2	Quadrant Ring	002 030
4	Cam Thrust Washer	004 030
5	Main Gear High Speed	005 050
6	Preset Spacer Washer	006 155
7	Metal Drag Washer	007 030
9	Spacing Sleeve	009 030
13	Pinion Gear	013 020
14	Dog Spring (2 req.)	014 050
15	Dog (2 req.)	015 050
18	Disc Clutch Spring (4 req.)	018 030
19	Eccentric Cam	019 020
20	Ball Bearing (3 req.)	020 704
21	Eccentric Lever	021 030
22	Dog Spring Screw (2 req.)	022 109
23	Handle Screw	023 114