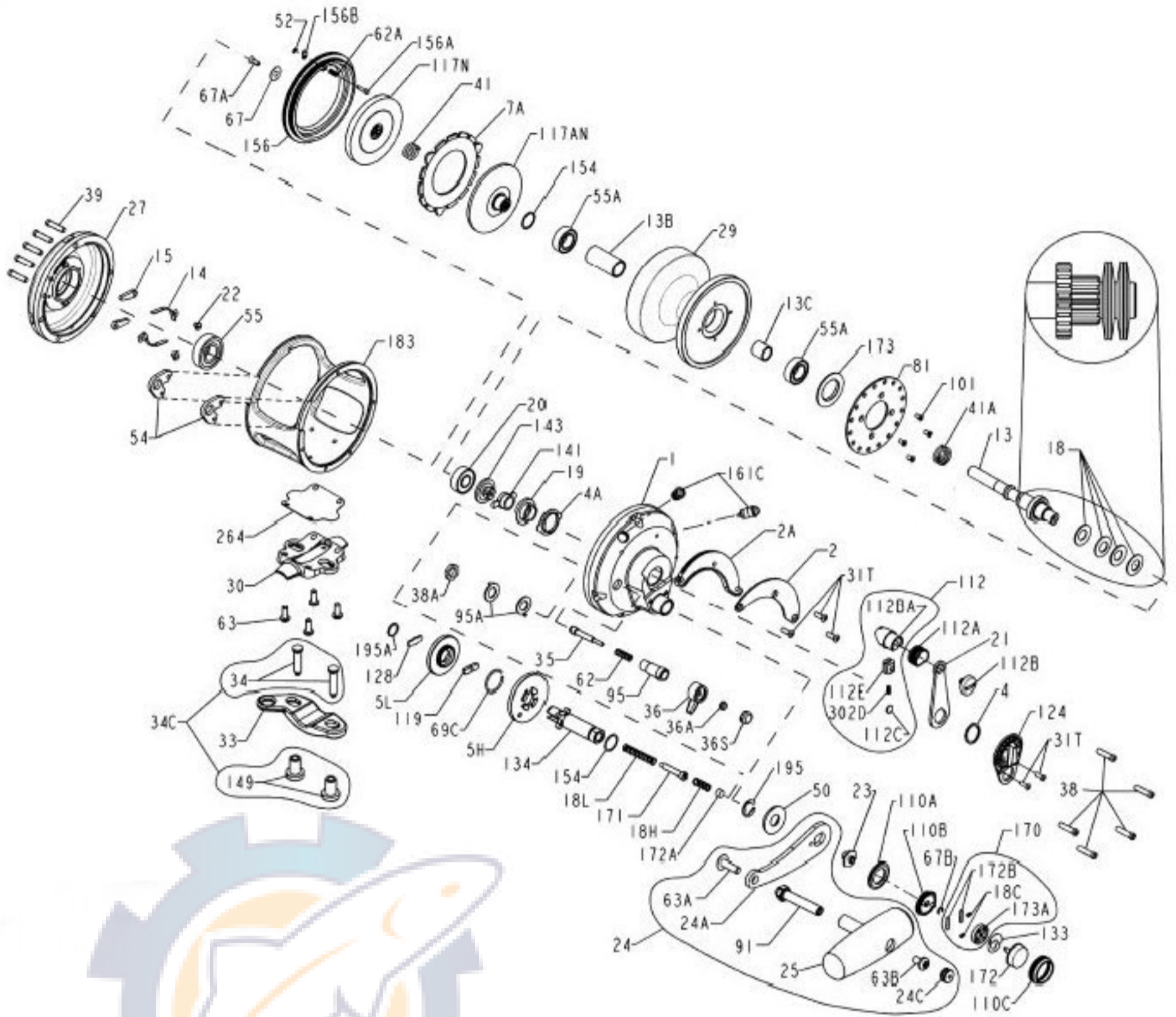




# PARTS LIST FOR MODEL 30VSX



### Penn Reel Parts list for:

KEY NO.	PART NO.	DESCRIPTION
1	1-30VSX	RIGHT SIDE PLATE ASSEMBLY
2	2-30VS	QUADRANT RING
2A	2A-30VS	QUADRANT SPACER
4	4-12LT	CAM THRUST WASHER
4A	4-30VS	CAM BUSHING
5H	5-30VSHS	MAIN GEAR HIGH-SPEED
5L	5-30VSLS	MAIN GEAR LOW-SPEED
7A	7A-30VS	METAL DRAG WASHER
13	13-30VSX	PINION GEAR
13B	13B-30VS	SPOOL SLEEVE
13C	13B-70	PINION GEAR SLEEVE
14	14-60	DOG SPRING (2 REQ.)
15	15-60	DOG (2 REQ.)
18	18-30TW	DISC CLUTCH SPRING (4 REQ.)
18C	18C-15KG	SHIFT CATCH SPRING (2 REQ.)
18H	18H-30VS	SHIFT SPRING (HEAVY)
18L	18L-30VS	SHIFT SPRING (LIGHT)
19	19-30VS	ECCENTRIC CAM
21	21-30VS	ECCENTRIC LEVER
22	22-109	DOG SPRING SCREW (2 REQ.)
23	23-30VS	HANDLE SCREW (2 REQ.)
24	24-30VS	HANDLE COMPLETE
24C	24C-60M	HANDLE KNOB CAP
25	25-60M	HANDLE KNOB
27	27-30VS	L.S. PLATE ASSEMBLY
28L	28L-30VSW	SPOOL
30	30-30VS	STAND
31	31T-70	SHORT SCREW (5 REQ.)
33	33-70	ROD CLAMP
34	34-70VS	CLAMP SCREW (2 REQ.)
34C	34C-70VS	ROD CLAMP SCREW W/NUT
35	35-70	CLICK TONGUE
36	36N-60	CLICK BUTTON
36A	36-700	CLICK BUTTON NUT
36S	36S-80ST	CLICK BUTTON CAP
38	38-16VS	RIGHT SIDE PLATE SCREW (5 REQ.)
38A	38-710	CLICK BUSHING NUT
39	39-16VS	LEFT SIDE PLATE SCREW (5 REQ.)
41	41-2.5FR	BEARING SPRING (3/8" dia.)
41A	41-70	DRAG SPRING (1/2" dia.)
50	50-60VS	SHIELD
52	52-910	RETAINING RING
54	54-30T	HARNES LUG (2 REQ.)
55	55-60	BALL BEARING
55A	55-80ST	BALL BEARING (2 REQ.)
55B	20-704	BALL BEARING
62	62-60	CLICK SPRING
62A	62-645	CLICK SPRING

### Model: 30VSX

KEY NO.	PART NO.	DESCRIPTION
63	63-30T	STAND SCREWS (4 REQ.)
63A	63A-60	SCREW
63B	63-60	SCREW
67	67-70	PINION GEAR WASHER
67A	67A-70	PINION RETAINING SCREW
67B	67-30VS	SHIFTER RETAINING RING
69C	69C-245	H/L RETAINING RING (2 REQ.)
81	81-50	RATCHET
91	91N-50	HANDLE RIVET
95	95-70	CLICK TONGUE BUSHING
95C	95A-60	CLICK BUSHING WASHER
101	101-30	RATCHET PLATE SCREW (11 REQ.)
110A	110A-30VS	HANDLE SCREW LOCKING RING
110B	110B-30VS	SHIFT BASE
110C	110C-30VS	SHIFT BUTTON RETAINING RING
112	112-30VS	ECCENTRIC LEVER KNOB ASSEMBLY
112A	112A-30VS	KNOB SLEEVE
112B	112B-70	ECCENTRIC KNOB SCREW
112B	112B-30VS	DRAG LEVER KNOB
112B	112C-30VS	DRAG CLICK PLATE
112B	112E-30VS	DRAG LEVER CLICK PLATE HOUSING
117A	117AN-60S	DRIVE PLATE W/ DRAG WASHER
117D	117N-60S	DRIVE PLATE W/ DRAG WASHER
119	119-24KG	COUPLING PLATE
124	124L-30VS	BRIDGE COVER ASSEMBLY
128A	128A-24KG	LOW GEAR PINS (6 REQ.)
133	133-30VS	RETAINING PLATE
134	134-30VS	GEAR STUD
141	141-30VS	CAM FOLLOWER
143	143-16VS	PRESET SCREW
149	149-70	ROD CLAMP NUT (2 REQ.)
154	154-60	SHIM (2 REQ.)
156	156-30VS	DRAG COVER
156A	156A-30VS	LOCK PIN
156B	156B-30VS	LOCK PLATE
161C	161C-30VSW	DRAG LOCATING PIN ASSEMBLY (2 REQ.)
170	170-30VS	CATCH ASSEMBLY
171	171-30VS	SHIFT PLUNGER
172	172-30VS	SHIFT BUTTON (LOW)
172A	172B-30VS	SPRING SPACER
172B	173-30VS	BEARING RETAINER
173	173-60VS	BEARING RETAINER
173A	173A-30VS	BEARING RETAINER
183	183-30VSX	TUBE FRAME
195	195-40	RETAINING RING (2 REQ.)
195A	195-24KG	RETAINING RING
264	264-30VS	STAND GASKET
302D	302D-525MAG	DRAG CLICK PLATE SPRING

### International VX 2-speed

KEY NO.	PART NO.	DESCRIPTION
63	63-30T	STAND SCREWS (4 REQ.)
63A	63A-60	SCREW
63B	63-60	SCREW
67	67-70	PINION GEAR WASHER
67A	67A-70	PINION RETAINING SCREW
67B	67-30VS	SHIFTER RETAINING RING
69C	69C-245	H/L RETAINING RING (2 REQ.)
81	81-50	RATCHET
91	91N-50	HANDLE RIVET
95	95-70	CLICK TONGUE BUSHING
95C	95A-60	CLICK BUSHING WASHER
101	101-30	RATCHET PLATE SCREW (11 REQ.)
110A	110A-30VS	HANDLE SCREW LOCKING RING
110B	110B-30VS	SHIFT BASE
110C	110C-30VS	SHIFT BUTTON RETAINING RING
112	112-30VS	ECCENTRIC LEVER KNOB ASSEMBLY
112A	112A-30VS	KNOB SLEEVE
112B	112B-70	ECCENTRIC KNOB SCREW
112B	112B-30VS	DRAG LEVER KNOB
112B	112C-30VS	DRAG CLICK PLATE
112B	112E-30VS	DRAG LEVER CLICK PLATE HOUSING
117A	117AN-60S	DRIVE PLATE W/ DRAG WASHER
117D	117N-60S	DRIVE PLATE W/ DRAG WASHER
119	119-24KG	COUPLING PLATE
124	124L-30VS	BRIDGE COVER ASSEMBLY
128A	128A-24KG	LOW GEAR PINS (6 REQ.)
133	133-30VS	RETAINING PLATE
134	134-30VS	GEAR STUD
141	141-30VS	CAM FOLLOWER
143	143-16VS	PRESET SCREW
149	149-70	ROD CLAMP NUT (2 REQ.)
154	154-60	SHIM (2 REQ.)
156	156-30VS	DRAG COVER
156A	156A-30VS	LOCK PIN
156B	156B-30VS	LOCK PLATE
161C	161C-30VSW	DRAG LOCATING PIN ASSEMBLY (2 REQ.)
170	170-30VS	CATCH ASSEMBLY
171	171-30VS	SHIFT PLUNGER
172	172-30VS	SHIFT BUTTON (LOW)
172A	172B-30VS	SPRING SPACER
172B	173-30VS	BEARING RETAINER
173	173-60VS	BEARING RETAINER
173A	173A-30VS	BEARING RETAINER
183	183-30VSX	TUBE FRAME
195	195-40	RETAINING RING (2 REQ.)
195A	195-24KG	RETAINING RING
264	264-30VS	STAND GASKET
302D	302D-525MAG	DRAG CLICK PLATE SPRING